

 BROADWAY

Remarkable NoHo Flagship Opportunity



A photograph of a large, empty interior space, likely a hallway or atrium. The room features a series of white, classical-style columns with decorative capitals. A large, silver-wrapped duct runs along the ceiling. The floor is polished and reflects the overhead lights. The lighting is bright, coming from recessed ceiling fixtures. The overall atmosphere is clean and spacious.

64 BROADWAY

Size

Ground Floor: 8,000 SF
Lower Level: 7,000 SF
Total: 15,000 SF

Ceiling Heights

Ground Floor: 18'
Lower Level: 11'

Possession

Immediate

Frontage

27' on Broadway

Term

Upon Request

Contact

Adam Henick
adam@wcmre.com
646.845.0351

Brandon Charnas
brandon@wcmre.com
646.845.0350

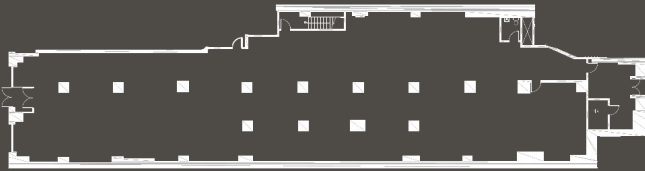
636 BROADWAY

Highlights

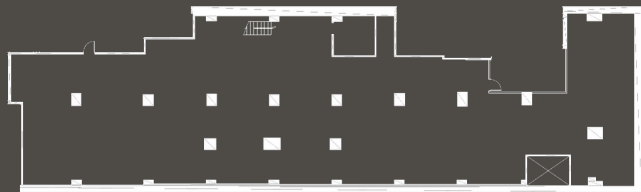
- NoHo Flagship Opportunity
- Heavily Trafficked Retail Corridors
- Strong Retail Adjacencies
- Great Visibility
- High Ceilings
- Rare Large Floorplates
- New Entrance on Crosby Street



Floorplans



Ground Floor: 8,000 SF



Lower Level: 7,000 SF

