



# EXECUTIVE OFFICE SPACE FOR LEASE

WOODFIELD GROVE BUSINESS CENTER  
830-890 E HIGGINS RD, SCHAUMBURG, IL



**2015 PROPERTY RENOVATIONS INCLUDE:**

- LANDSCAPING
- SIGNAGE
- LIGHTING
- WINDOWS
- EXTERIOR DOORS

**BUILDING FEATURES:**

- “Get me out of the house!” Office Space
- Ideal for Start-Up Businesses
- 805 SF Available Immediately
- Single-Story Direct-Access Buildings with 24-Hour Access
- Perfect space for Accountants, Therapists, Attorneys and Other Independent Professionals
- Rent Includes Taxes, CAM, Electric and HVAC!
- High-End office build outs
- Ample Parking for Client Visitation
- Easy Access from Higgins, Plum Grove Rd, and Woodfield Rd
- Next to LifeTime Fitness and Bank of America
- Just minutes away from Woodfield Mall!

**AVAILABLE SPACE:**

SUITE	SIZE (SF)	MONTHLY RENT	DESCRIPTION	WINDOW
147	805	\$1,145	4 -Ofc suite with sinks	Yes

**FOR MORE INFORMATION:**

RANDY OLCZYK  
Direct: 847.246.9611  
randy@chicagolandcommercial.com

CHRISTINA ADAMS  
Direct: 847.246.9634  
christina@chicagolandcommercial.com

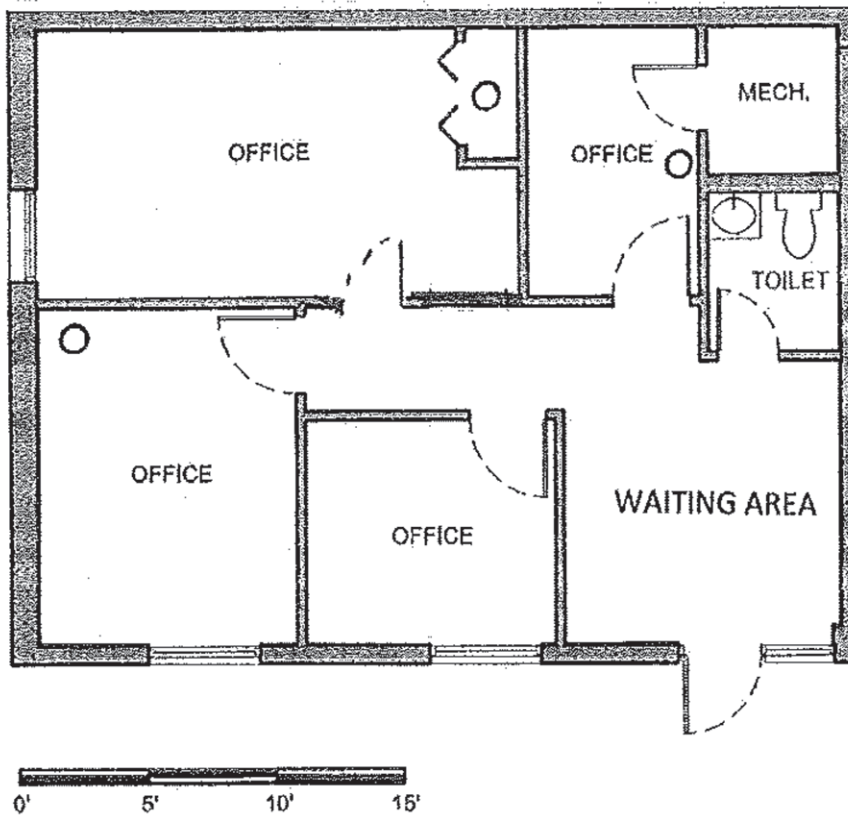


1240 W. Northwest Hwy., Palatine, IL 60067



**EXECUTIVE OFFICE SPACE FOR LEASE**  
WOODFIELD GROVE BUSINESS CENTER  
830-890 E HIGGINS RD, SCHAUMBURG, IL

FLOOR PLAN SUITE 147-805 SF



**BUILDING NO. 890 - SUITE 147**

**805 SQ. FT. - USABLE**



# EXECUTIVE OFFICE SPACE FOR LEASE

WOODFIELD GROVE BUSINESS CENTER  
830-890 E HIGGINS RD, SCHAUMBURG, IL

