

FOR LEASE

# Ground Level Retail Space in Downtown Orlando

20 N Orange Ave | Orlando, FL 32801



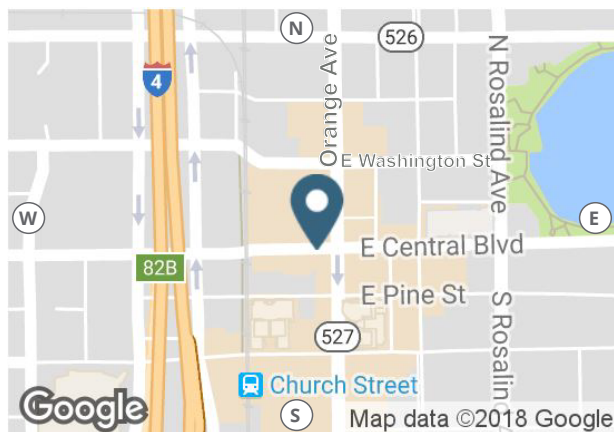
**MAJOR EXTERIOR PATIO AVAILABLE**

## Overview

<b>AVAILABLE</b>	<b>SUITE 100</b>	1,484 SF
<b>OPTION A</b>	<b>SUITE 102</b>	5,013 SF
<b>OPTION B</b>	<b>SUITE 102A</b>	1,779 SF
	<b>SUITE 102B</b>	3,154 SF
	<b>SUITE 106</b>	1,914 SF
	<b>SUITE 108</b>	1,072 SF

## LEASE RATE

Call For Rates



## Contact

**CINDY SCHOOLER, CCIM**

407.563.6127 | cindy.schooler@srsre.com

## Description

- Up to 5,013 SF
- Great ground floor restaurant spaces available with major exterior patio
- At the intersection of Orange Ave & Central Blvd in the heart of downtown Orlando
- Huge plaza renovations start June 2018
- Located within walking distance to nearby restaurants, retailers, hotels, Dr Phillips Performing Arts Center, Plaza Cinema Cafe, Lake Eola Park, Amway Center, Orange County Courthouse, City Hall, Lymmo and SunRail Stations

## Orlando CBD Drivers



**17,482**  
Total Businesses



**\$69,494**  
Average Household  
Income



**292,021**  
Residential  
Population

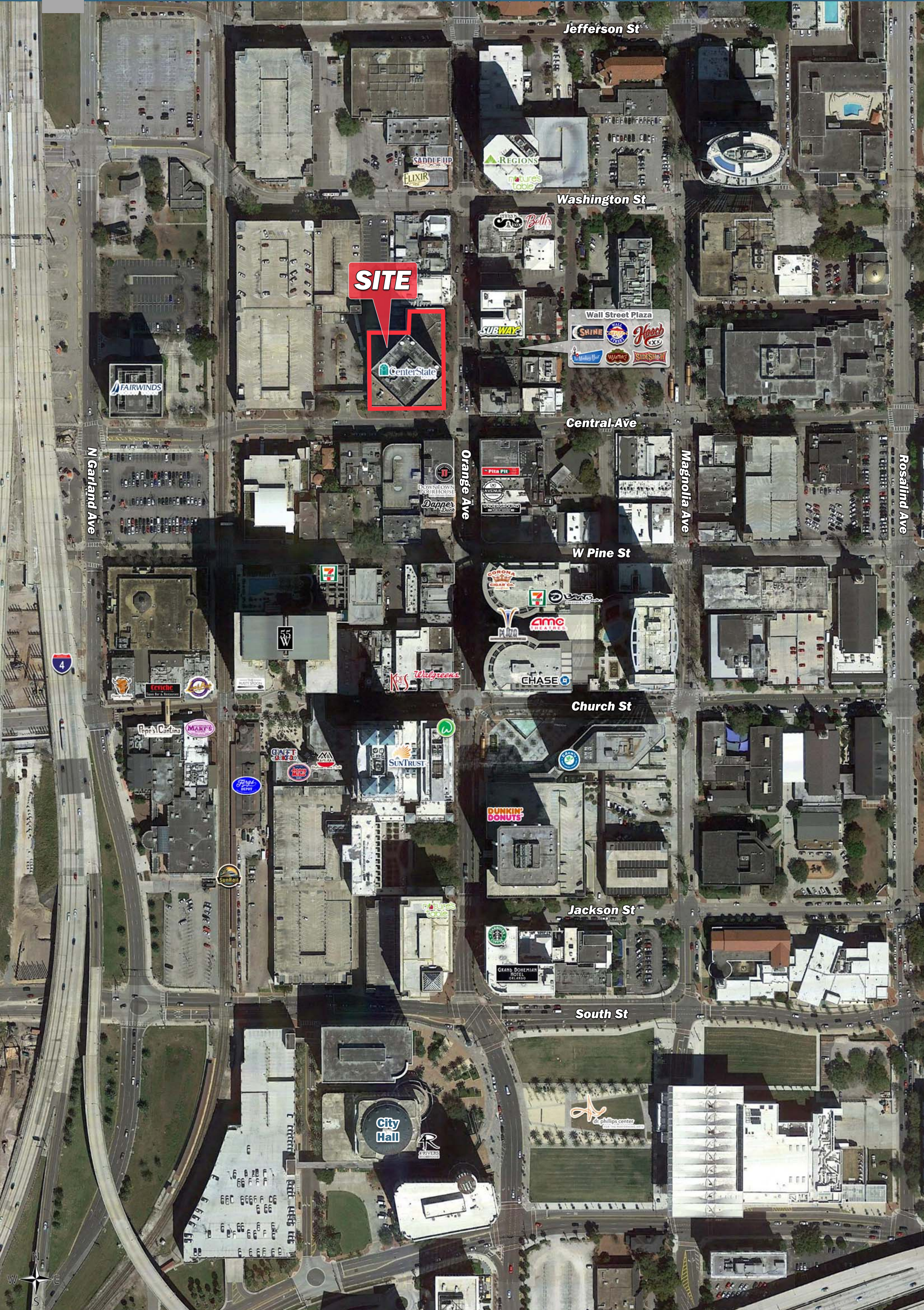


**31,621 AADT**  
Along Orange Ave  
**166,000 AADT**  
Along I-4



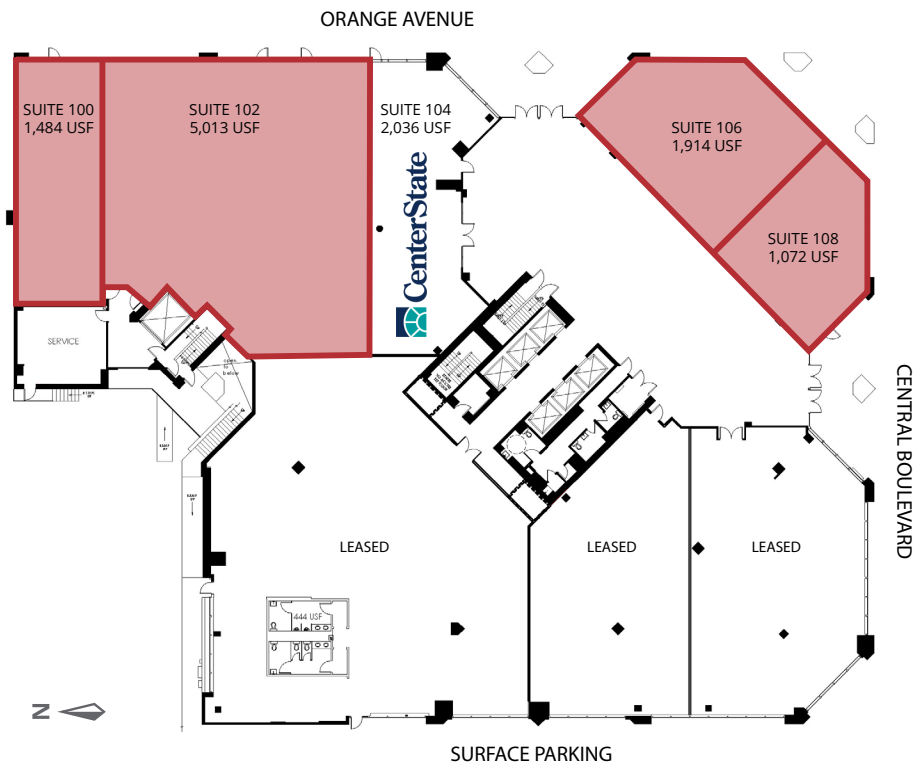
**269,508**  
Total Employees  
**299,309**  
Daytime Employees





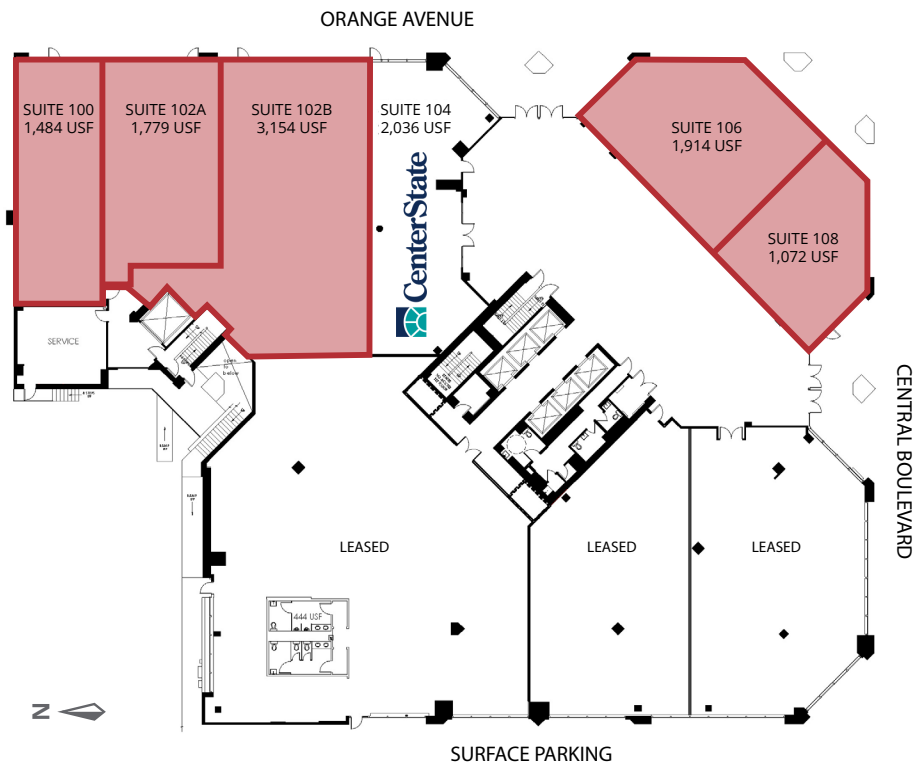
# Ground Level Retail Space in Downtown Orlando

20 N Orange Ave | Orlando, FL 32801



# Ground Level Retail Space in Downtown Orlando

20 N Orange Ave | Orlando, FL 32801

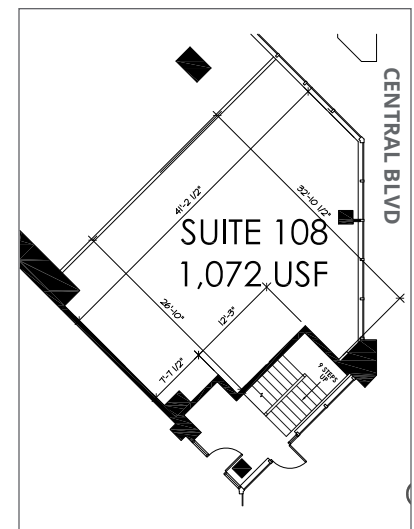
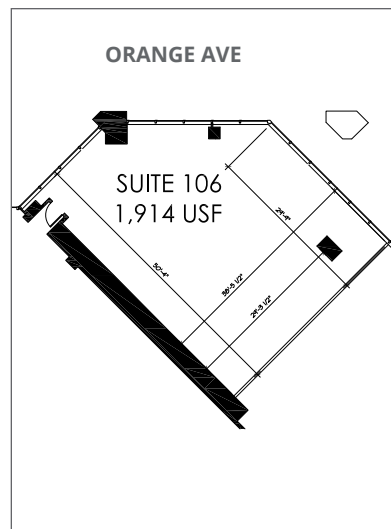
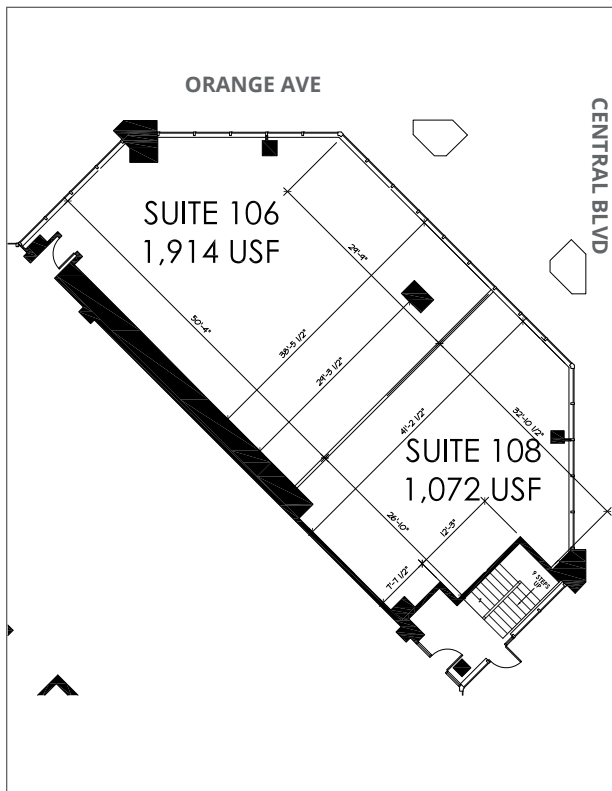
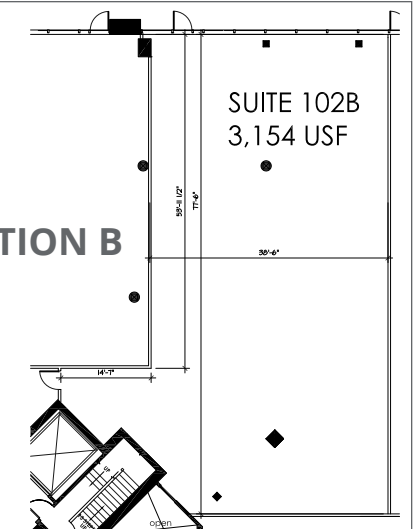
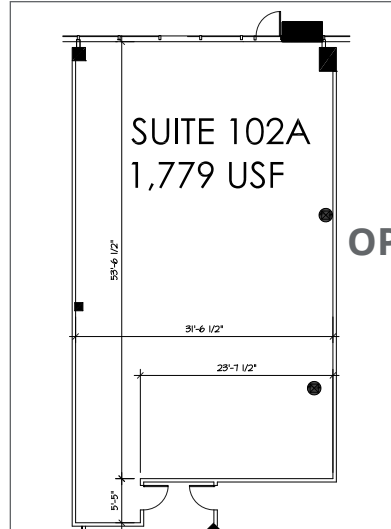
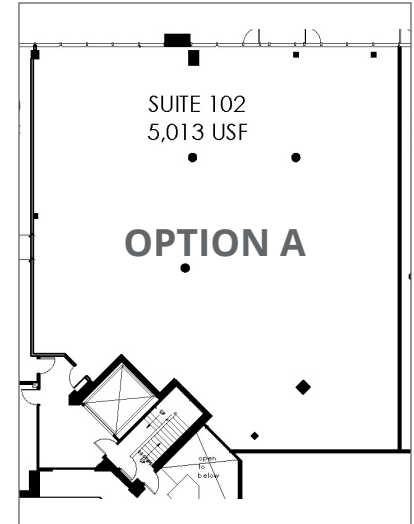
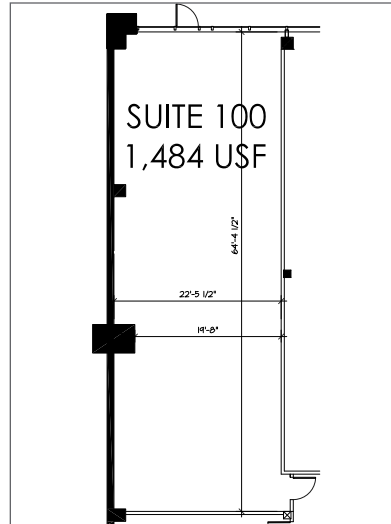


# Ground Level Retail Space in Downtown Orlando

20 N Orange Ave | Orlando, FL 32801



SUITE	SF
SUITE 100	1,484
OPTION A	
SUITE 102	5,013
OPTION B	
SUITE 102A	1,779
SUITE 102B	3,154
SUITE 106	1,914
SUITE 108	1,072



# Executive Summary

20 N Orange Ave | Orlando, FL 32801



	1 mile	2 miles	3 miles
<b>Population</b>			
2017 Population	19,137	50,121	96,205
2000 Population	13,088	42,735	88,567
2010 Population	15,939	44,129	86,381
2022 Population	21,194	54,650	104,048
2000-2010 Annual Rate	1.99%	0.32%	-0.25%
2010-2016 Annual Rate	2.55%	1.77%	1.50%
2016-2021 Annual Rate	2.06%	1.75%	1.58%
2017 Median Age	38.4	38.7	39.6
<b>Households</b>			
2000 Households	6,839	20,089	39,420
2010 Households	8,645	21,695	40,373
2017 Total Households	10,547	24,778	44,995
2022 Total Households	11,823	27,181	48,805
2000-2010 Annual Rate	2.37%	0.77%	0.24%
2010-2016 Annual Rate	2.78%	1.85%	1.51%
2016-2021 Annual Rate	2.31%	1.87%	1.64%
2017 Average Household Size	1.64	1.93	2.06
<b>Housing Units</b>			
2017 Total Housing Units	12,487	28,513	50,813
2017 Owner Occupied Housing Units	2,042	8,255	18,656
2017 Renter Occupied Housing Units	8,506	16,523	26,339
2017 Vacant Housing Units	1,940	3,735	5,818
<b>Race and Ethnicity</b>			
2017 White Alone	63.6%	66.3%	65.6%
2017 Black Alone	26.3%	23.9%	25.1%
2017 American Indian/Alaska Native Alone	0.3%	0.3%	0.4%
2017 Asian Alone	3.7%	3.2%	2.8%
2017 Pacific Islander Alone	0.0%	0.1%	0.1%
2017 Hispanic Origin (Any Race)	15.4%	14.3%	14.1%
<b>Income</b>			
2017 Median Household Income	\$46,693	\$50,732	\$50,403
2017 Average Household Income	\$74,628	\$78,472	\$75,881
Per Capita Income	\$43,923	\$40,348	\$36,581
<b>2017 Population 25+ by Educational Attainment</b>			
Total	15,414	38,661	72,316
High School Graduate	18.9%	18.2%	19.6%
GED/Alternative Credential	4.1%	3.8%	3.7%
Some College, No Degree	13.3%	15.5%	16.8%
Associate Degree	8.2%	8.9%	9.1%
Bachelor's Degree	30.7%	30.2%	27.7%
Graduate/Professional Degree	15.5%	14.9%	14.1%
<b>Data for all businesses in area</b>			
Total Businesses:	3,304	6,138	9,073
Total Employees:	68,152	126,930	176,673
Total Residential Population:	19,137	50,121	96,205
Employee/Residential Population Ratio:	3.56:1	2.53:1	1.84:1
2017 Total Daytime Population	84,306	162,179	240,248
Workers	75,605	139,679	195,194
Residents	8,701	22,500	45,054