

PRIME FIRST FLOOR OFFICE SPACE FOR LEASE

113 S. Perry Street, Lawrenceville, GA 30046



OAKHURST
REALTY
PARTNERS



PROPERTY OVERVIEW

The available first floor office space is 1,380 square feet.

The office area includes a waiting area, break room/kitchenette, multiple offices and a restroom. The building offers ample free parking and is within easy walking distance to all of downtown Lawrenceville's great retail and restaurants.

LOCATION

The building is located in the heart of downtown Lawrenceville, which is the county seat for Gwinnett County – the second most populous county in the state of Georgia. The building has great accessibility and is proximate to the Gwinnett Justice & Administration Center and Lawrenceville City Hall.

FOR MORE INFORMATION

PLEASE CONTACT:

B. Fisher Paty, CCIM

404-371-4100

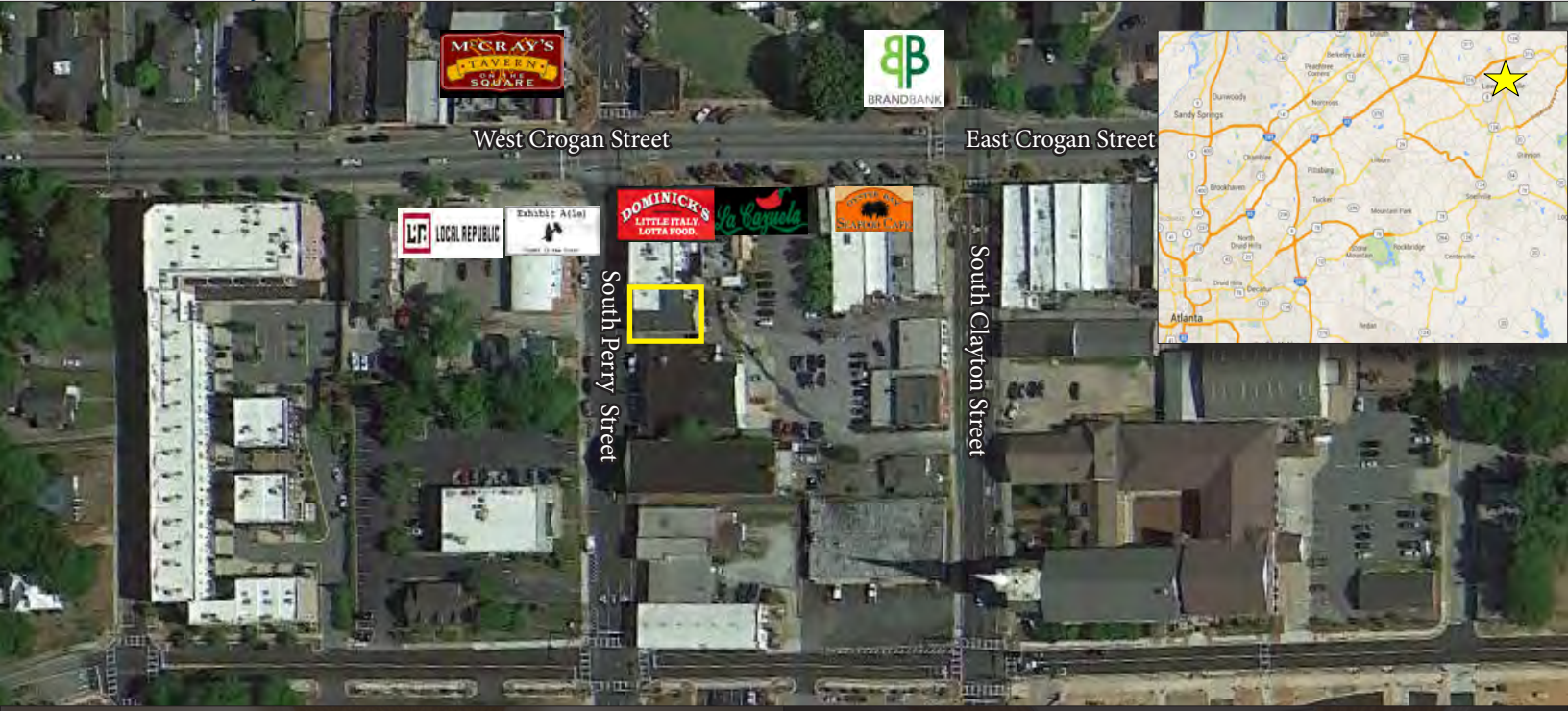
fpaty@oakrep.com

PRIME FIRST FLOOR OFFICE SPACE FOR LEASE

113 S. Perry Street, Lawrenceville, GA 30046



OAKHURST REALTY PARTNERS



113 S. Perry Street, Lawrenceville, GA 30046

1,380 RSF

\$1,925/month

- Rent includes utilities
- Kitchenette w/sink
- Private restroom

