



101 N. BROAD STREET

MULTIPLE SF RETAIL/RESTAURANT OPPORTUNITIES AT THE ALOFT HOTEL
628 SF-1,582 SF



Convention Center • Philadelphia, PA

101 N. BROAD STREET

Multiple SF Retail/Restaurant Opportunities at the Aloft Hotel

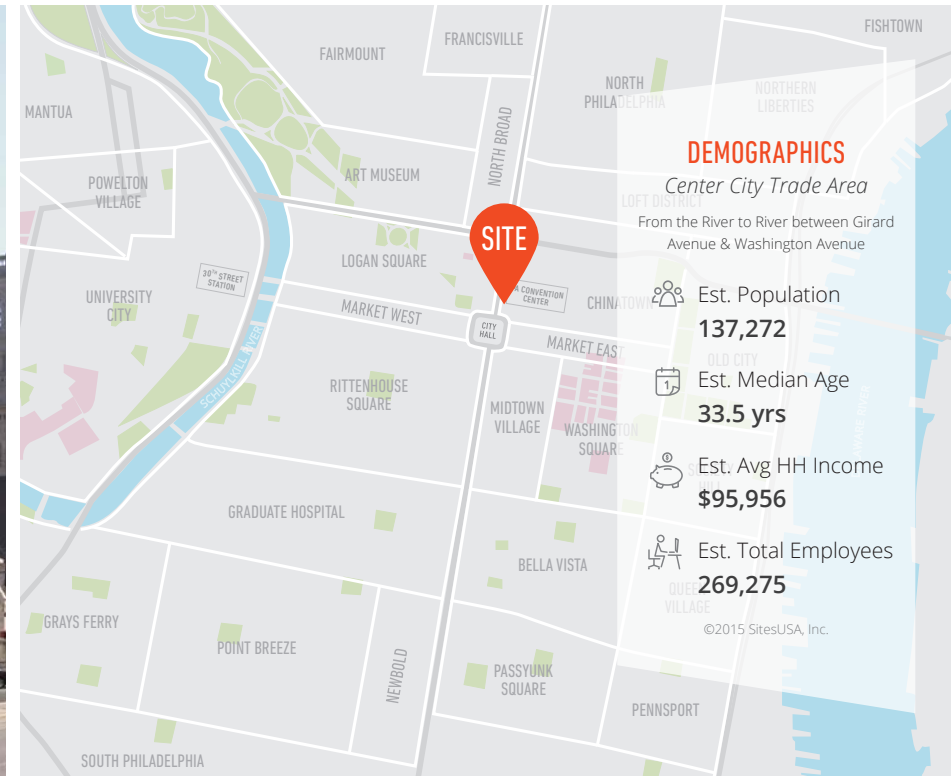
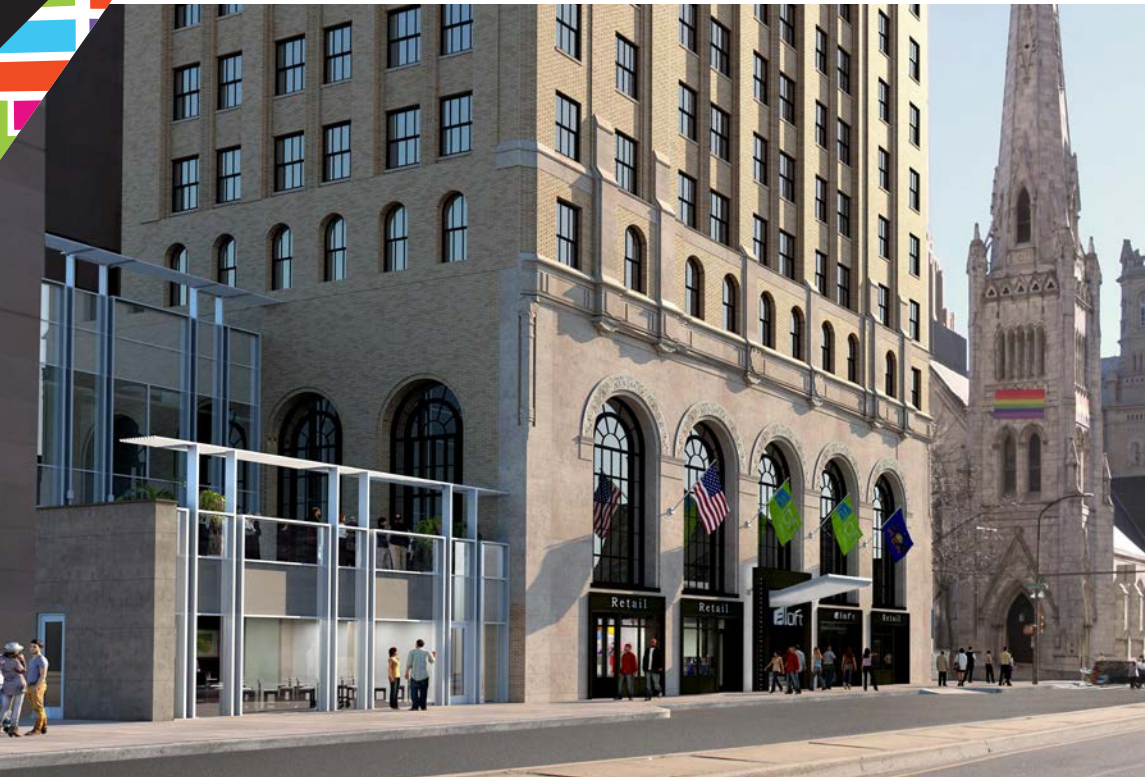
For more info, please contact:

JACOB COOPER

jcooper@MSCretail.com
215.568.2600 x714

BRITTANY GOLDBERG

bgoldberg@MSCretail.com
215.568.2600 x723



PROPERTY DETAILS

- ▶ Ground floor retail/restaurant opportunities at the new Aloft Hotel (179 keys) at the highly trafficked intersection of Broad & Arch Streets
- ▶ Adjacent to the newly expanded 2.3M SF Pennsylvania Convention Center with direct enclosed access to the main Broad Street entrance lobby
- ▶ Surrounded by dense tourist, office, and municipal traffic
- ▶ Small shop opportunities in historically renovated building (ranging from 628 SF to 1,582 SF) plus a new construction restaurant opportunity adjoining the Convention Center (1,580 SF)

- ▶ January 2017 delivery (hotel opening in Spring)

JOIN THESE AREA RETAILERS





Convention Center • Philadelphia, PA

101 N. BROAD STREET

Leasing Plan

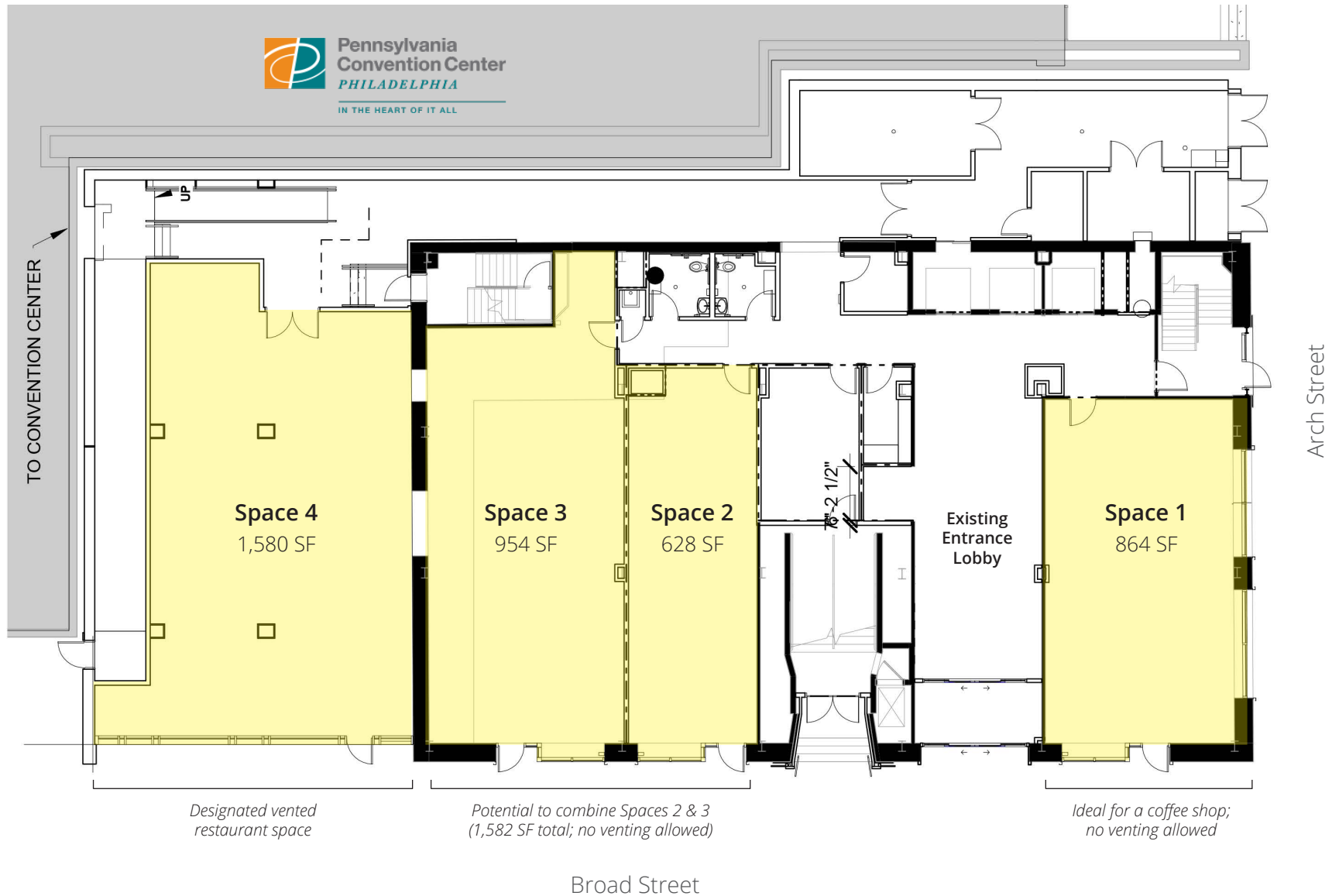
For more info, please contact:

JACOB COOPER

jcooper@MSCRetail.com
215.568.2600 x714

BRITTANY GOLDBERG

bgoldberg@MSCRetail.com
215.568.2600 x723





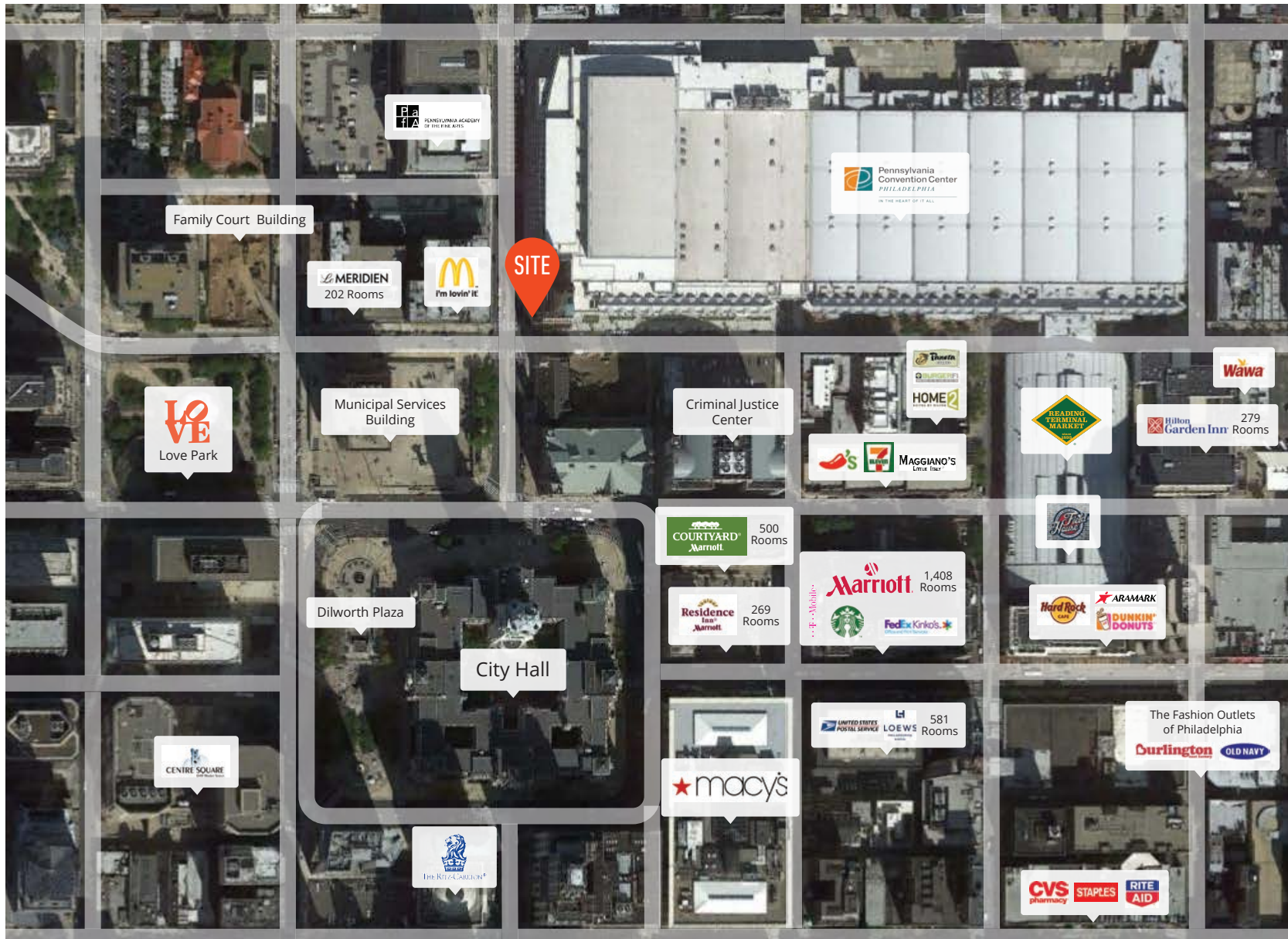
Convention Center • Philadelphia, PA

101 N. BROAD STREET

Aerial

For more info, please contact:

JACOB COOPER **BRITTANY GOLDBERG**
jcooper@MSCretail.com bgoldberg@MSCretail.com
215.568.2600 x714 215.568.2600 x723



The information contained herein has been obtained from sources deemed reliable. MSC Retail cannot verify it and makes no guarantee, warranty or representation about its accuracy. Any projections, opinions, assumptions or estimates provided by MSC Retail are for discussion purposes only and do not represent the current or future performance of a property, location or market.