

Flex/Office Space for Sale or Lease

2821 Dairy Drive, Madison, WI



Building Information

- 32,636 sq. ft. building
- 102,000 sq. ft. lot (2.34 acres)
- 5 tenants (93% occupied)
- M-1 zoning
- Drive-in doors
- Paved lot
- 83 parking stalls
- Fully sprinklered
- 8.6% Cap Rate with upside
- 2016 Taxes: \$39,449.67

Suite 1B: 2,439 sq. ft. Available

Lease Rate: \$9.00/sq. ft. (NNN)

NNN estimate: \$2.00/sq. ft.

Building Sale Price: \$3,100,000



For more information on this property please contact:

John Walsh

Direct: (608) 327-4002

Cell: (608) 575-1694

jwalsh@lee-associates.com

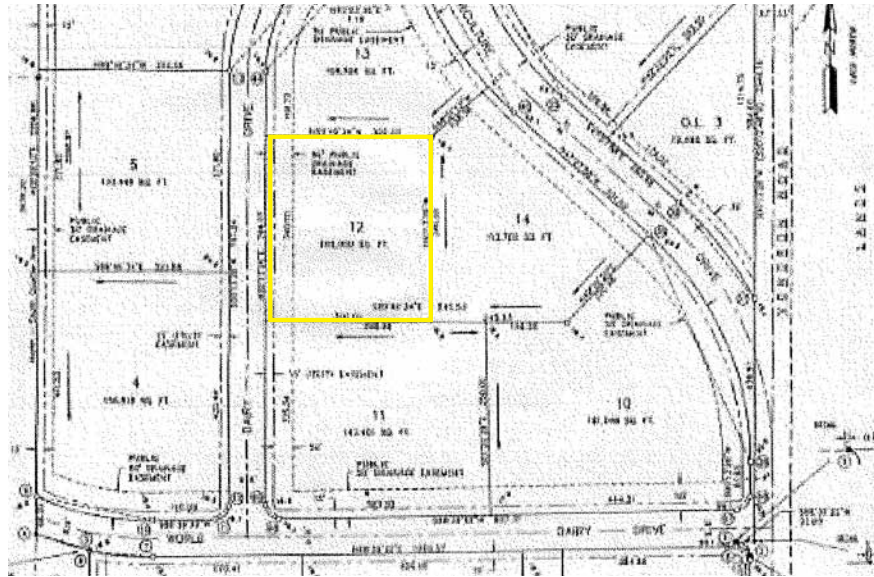
LEE & ASSOCIATES

COMMERCIAL REAL ESTATE SERVICES

Flex/Office Space for Sale or Lease

2821 Dairy Drive, Madison, WI

Plat Map



Rent Roll

Dairy Drive, LLC Rent Roll										
Suite	Tenant	S.F.	Rate	mo. rent	Annual rent	Management fee	Gross Income	expenses	escalator	lease expiration
1A	Madison Media Institute	7057	\$ 11.53	\$ 6,782	\$ 81,384	\$ 1,628	\$ 83,012	NNN	CPI-U	Dec. 31, 2020
1B	Vacant	2,439	\$ -	\$ -	\$ -					
2	Lifetouch	3,218	\$ 8.32	\$ 2,230	\$ 26,760	\$ 535	\$ 27,295	NNN	CPI-U	Aug. 31, 2020
3	Blend Communication	12,522	\$ 7.92	\$ 8,263	\$ 99,156	\$ 1,983	\$ 101,139	NNN	CPI	March. 31, 2019
4	Source One Solutions	3,700	\$ 7.49	\$ 2,310	\$ 27,720	\$ 554	\$ 28,274	NNN	3%	Oct. 31, 2020
5	Protection Tech	3,700	\$ 9.18	\$ 2,830	\$ 33,960	\$ 679	\$ 34,639	NNN	2%	July. 31, 2019
	Totals	32,636		\$ 22,415	\$ 268,980	\$ 5,380	\$ 274,360			

Tenant Roster

Suite	User	Office Sq. Ft.	Flex/Storage (Sq. Ft)	Total (Sq. Ft.)
1A	Madison Media Institute	7,057	0	7,057
1B	Vacant	1,911	528	2,439
2	Lifetouch National School Studios	1,733	1,485	3,218
3	Blend Communications	10,757	1,765	12,522
4	Source One Solutions	2,280	1,420	3,700
5	Protection Technologies Inc.	3,125	575	3,700
Totals	6 Tenants	26,863	5,773	32,636

For more information on this property please contact:

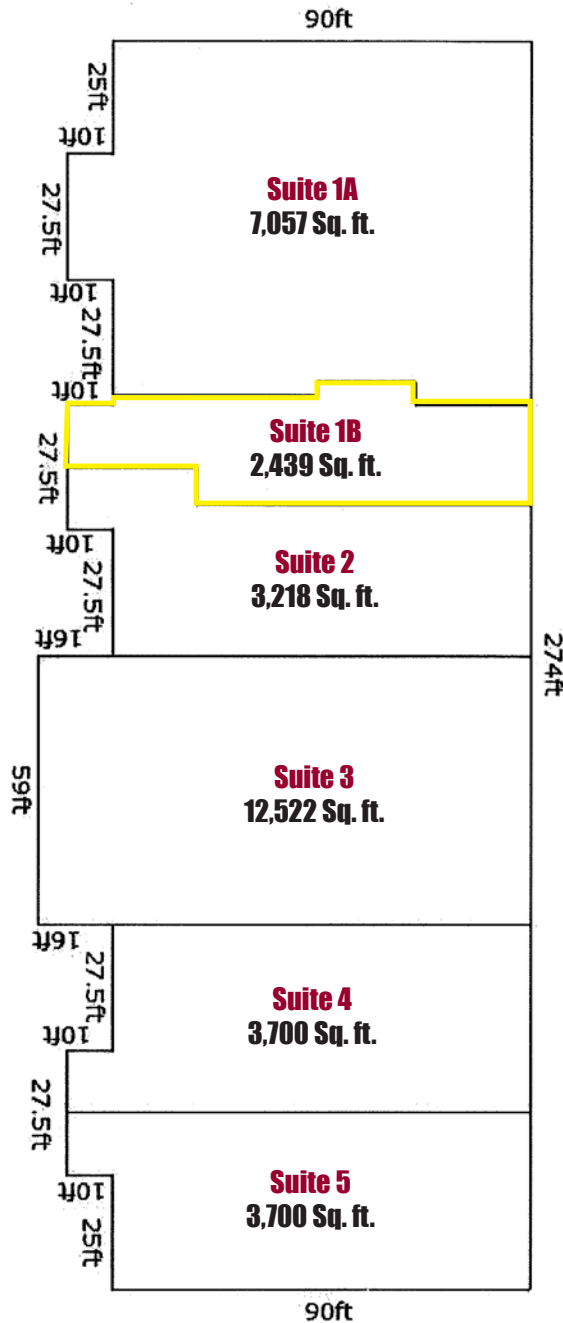
John Walsh
 Direct: (608) 327-4002
 Cell: (608) 575-1694
jwalsh@lee-associates.com

LEE & ASSOCIATES
 COMMERCIAL REAL ESTATE SERVICES

Flex/Office Space for Sale or Lease

2821 Dairy Drive, Madison, WI

Building Footprint



 = Available Space

For more information on this property please contact:

John Walsh

Direct: (608) 327-4002

Cell: (608) 575-1694

jwalsh@lee-associates.com

 **LEE &
ASSOCIATES**

COMMERCIAL REAL ESTATE SERVICES

BROKER DISCLOSURE TO NON-RESIDENTIAL CUSTOMERS

1 Prior to negotiating on your behalf the Broker must provide you the following disclosure statement:

2 **BROKER DISCLOSURE TO CUSTOMERS**

3 You are a customer of the broker. The broker is either an agent of another party in the transaction or a subagent of another broker
4 who is the agent of another party in the transaction. The broker, or a salesperson acting on behalf of the broker, may provide
5 brokerage services to you. Whenever the broker is providing brokerage services to you, the broker owes you, the customer, the
6 following duties:

- 7 ■ The duty to provide brokerage services to you fairly and honestly.
- 8 ■ The duty to exercise reasonable skill and care in providing brokerage services to you.
- 9 ■ The duty to provide you with accurate information about market conditions within a reasonable time if you request it, unless
10 disclosure of the information is prohibited by law.
- 11 ■ The duty to disclose to you in writing certain material adverse facts about a property, unless disclosure of the information is
12 prohibited by law (See Lines 47-55).
- 13 ■ The duty to protect your confidentiality. Unless the law requires it, the broker will not disclose your confidential information or the
14 confidential information of other parties (See Lines 22-39).
- 15 ■ The duty to safeguard trust funds and other property the broker holds.
- 16 ■ The duty, when negotiating, to present contract proposals in an objective and unbiased manner and disclose the advantages and
17 disadvantages of the proposals.

18 Please review this information carefully. A broker or salesperson can answer your questions about brokerage services, but if you
19 need legal advice, tax advice, or a professional home inspection, contact an attorney, tax advisor, or home inspector.

20 This disclosure is required by section 452.135 of the Wisconsin statutes and is for information only. It is a plain-language summary of
21 a broker's duties to a customer under section 452.133 (1) of the Wisconsin statutes.

22 **CONFIDENTIALITY NOTICE TO CUSTOMERS**

23 BROKER WILL KEEP CONFIDENTIAL ANY INFORMATION GIVEN TO BROKER IN CONFIDENCE, OR ANY INFORMATION
24 OBTAINED BY BROKER THAT HE OR SHE KNOWS A REASONABLE PERSON WOULD WANT TO BE KEPT CONFIDENTIAL,
25 UNLESS THE INFORMATION MUST BE DISCLOSED BY LAW OR YOU AUTHORIZE THE BROKER TO DISCLOSE PARTICULAR
26 INFORMATION. A BROKER SHALL CONTINUE TO KEEP THE INFORMATION CONFIDENTIAL AFTER BROKER IS NO LONGER
27 PROVIDING BROKERAGE SERVICES TO YOU.

28 THE FOLLOWING INFORMATION IS REQUIRED TO BE DISCLOSED BY LAW:

- 29 1. MATERIAL ADVERSE FACTS, AS DEFINED IN SECTION 452.01 (5g) OF THE WISCONSIN STATUTES (SEE LINES 47-55).
- 30 2. ANY FACTS KNOWN BY THE BROKER THAT CONTRADICT ANY INFORMATION INCLUDED IN A WRITTEN INSPECTION
31 REPORT ON THE PROPERTY OR REAL ESTATE THAT IS THE SUBJECT OF THE TRANSACTION.

32 TO ENSURE THAT THE BROKER IS AWARE OF WHAT SPECIFIC INFORMATION YOU CONSIDER CONFIDENTIAL, YOU MAY LIST
33 THAT INFORMATION BELOW (SEE LINES 35-36). AT A LATER TIME, YOU MAY ALSO PROVIDE THE BROKER WITH OTHER
34 INFORMATION YOU CONSIDER TO BE CONFIDENTIAL.

35 **CONFIDENTIAL INFORMATION:** _____

36
37 **NON-CONFIDENTIAL INFORMATION** (The following information may be disclosed by Broker): _____

38
39 *(INSERT INFORMATION YOU AUTHORIZE THE BROKER TO DISCLOSE SUCH AS FINANCIAL QUALIFICATION INFORMATION.)*

40 **CONSENT TO TELEPHONE SOLICITATION**

41 I/We agree that the Broker and any affiliated settlement service providers (for example, a mortgage company or title company) may
42 call our/my home or cell phone numbers regarding issues, goods and services related to the real estate transaction until I/we
43 withdraw this consent in writing. **List Home/Cell Numbers:** _____

44 **SEX OFFENDER REGISTRY**

45 *Notice: You may obtain information about the sex offender registry and persons registered with the registry by contacting the
46 Wisconsin Department of Corrections on the Internet at: <http://offender.doc.state.wi.us/public/> or by phone at 608-240-5830.*

47 **DEFINITION OF MATERIAL ADVERSE FACTS**

48 A "material adverse fact" is defined in Wis. Stat. § 452.01(5g) as an adverse fact that a party indicates is of such significance, or that
49 is generally recognized by a competent licensee as being of such significance to a reasonable party, that it affects or would affect
50 the party's decision to enter into a contract or agreement concerning a transaction or affects or would affect the party's decision
51 about the terms of such a contract or agreement. An "adverse fact" is defined in Wis. Stat. § 452.01(1e) as a condition or occurrence
52 that a competent licensee generally recognizes will significantly and adversely affect the value of the property, significantly reduce
53 the structural integrity of improvements to real estate, or present a significant health risk to occupants of the property; or information
54 that indicates that a party to a transaction is not able to or does not intend to meet his or her obligations under a contract or
55 agreement made concerning the transaction.

No representation is made as to the legal validity of any provision or the adequacy of any provision in any specific transaction.
Copyright 2007 by Wisconsin REALTORS® Association
Lee & Assoc of Madison 6430 Bridge Road, Suite 230 Madison, WI 53713

Drafted by Attorney Debra Peterson Conrad
Phone: 608-327-4000 Fax: 608-327-4011 Broker Disclosure