

FOR LEASE > MEDICAL SUITES NORTHRIDGE MEDICAL CENTER



18433 ROSCOE BLVD. NORTHRIDGE, CA



AVAILABLE SUITES

Suite 106 - 2,224 SF*

Suite 108 - 3,074 SF*

* *Contiguous to ±5,298 SF

FEATURES

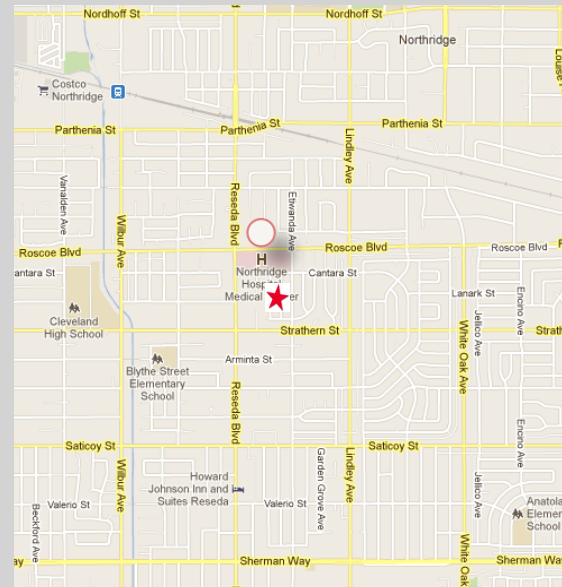
- Open atrium
- Across from Northridge Hospital Medical Center
- Common area breakroom with vending machines
- Recently renovated common areas

TERM

5 to 10 years

RENTAL RATE

\$2.85 Sq. Ft. Full Service Gross



COLLIERS INTERNATIONAL
16830 Ventura Boulevard, Suite J
Encino, CA 91436
www.colliers.com

FOR MORE DETAILS, CONTACT:

AGENT: ANGIE WEBER
LICENSE NO. 01015031
818 905 5800 | EXT. 4114
angie.weber@colliers.com

AGENT: DANA NIALIS
LICENSE NO. 01947265
818 905 5800 | EXT. 4107
dana.nialis@colliers.com

FOR LEASE > MEDICAL SUITES NORTHRIDGE MEDICAL CENTER

18433 ROSCOE BLVD. NORTHRIDGE, CA



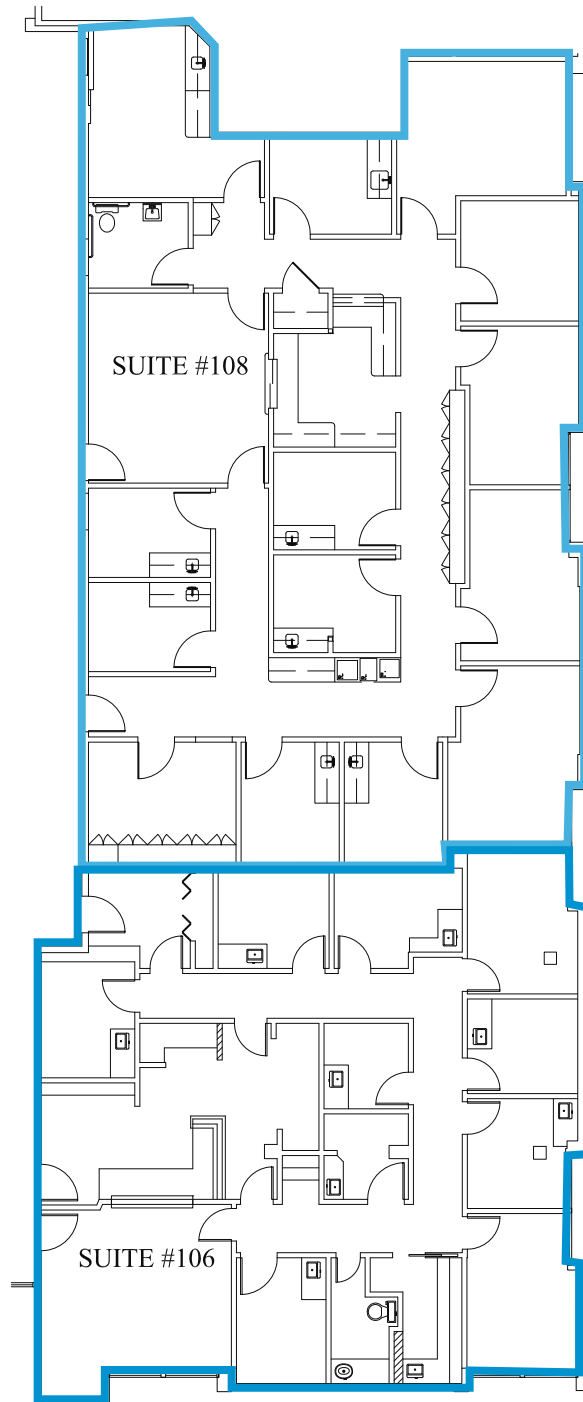
Suite 106

±2,224 SF

Suite 108

±3,074 SF

*Contiguous to ±5,298 SF



AGENT: ANGIE WEBER
LICENSE NO. 01015031
818 905 5800 | EXT. 4114
angie.weber@colliers.com

AGENT: DANA NIALIS
LICENSE NO. 01947265
818 905 5800 | EXT. 4107
dana.nialis@colliers.com