

FOR SUBLEASE > OFFICE SPACE

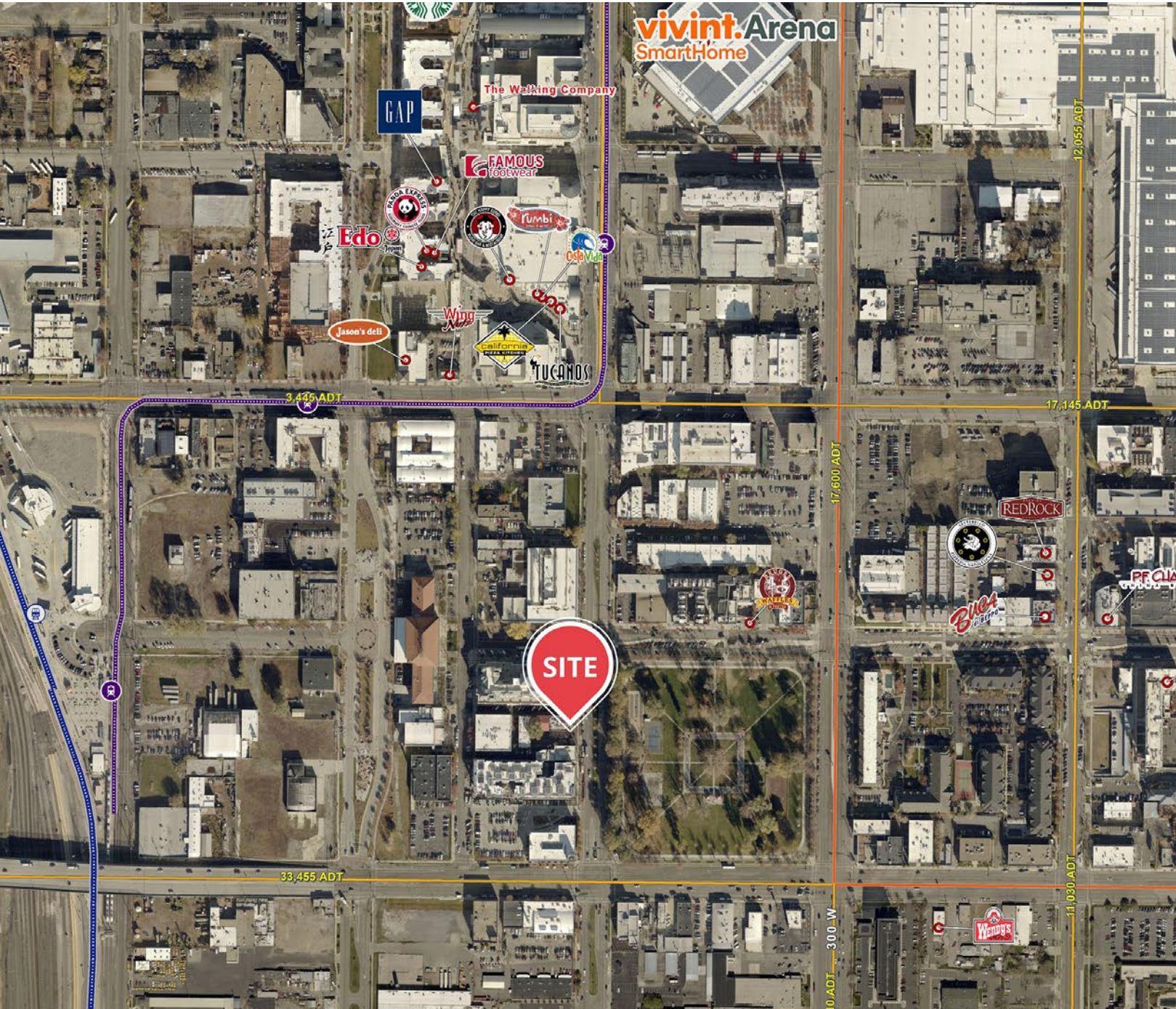
# 336 South 400 West SLC

336 SOUTH 400 WEST SALT LAKE CITY, UTAH

FOR SUBLEASE > OFFICE SPACE

# 336 South 400 West SLC

336 SOUTH 400 WEST SALT LAKE CITY, UTAH

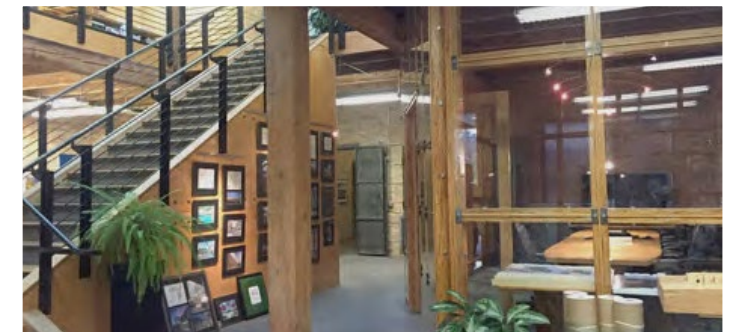


## Property Information

- > Industrial Chic Workspace in the Broadway District
- > 15,500 RSF  
10,500 SF Office  
5,000 SF Lower Level
- > \$16.75 PSF Modified Gross
- > Available Now. Lease End date May 2022
- > 12 Free onsite parking spaces
- > Free street parking available.
- > Plenty of covered and secured parking spaces available for rent next door.
- > Walking distance to TRAX
- > Easy access to I-15 & I-80
- > Furniture could be available

## Possible Uses for lower level 5,000 SF

- Secured, Climate-Controlled Storage
- > Layout or Work Preparation Space
- > Computer or Server Room
- > Warehouse / Product Fulfillment
- > Call Center
- > Desktop Assembly



This document has been prepared by Colliers International for advertising and general information only. Colliers International makes no guarantees, representations or warranties of any kind, expressed or implied, regarding the information including, but not limited to, warranties of content, accuracy and reliability. Any interested party should undertake their own inquiries as to the accuracy of the information. Colliers International excludes unequivocally all inferred or implied terms, conditions and warranties arising out of this document and excludes all liability for loss and damages arising there from. This publication is the copyrighted property of Colliers International and/or its licensor(s). ©2017. All rights reserved.



**Brandon Johnson**  
+1 23 427 0350  
brandon.johnson@colliers.com

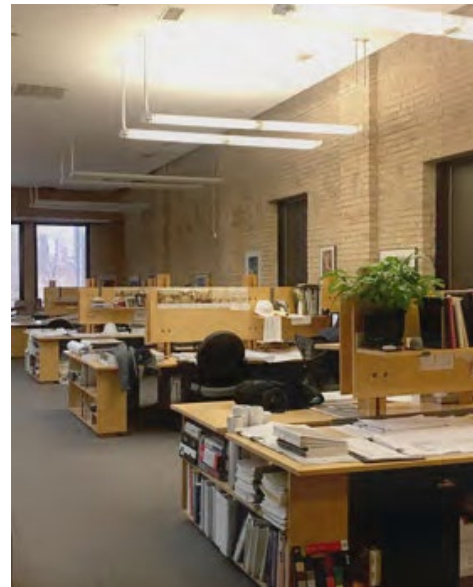
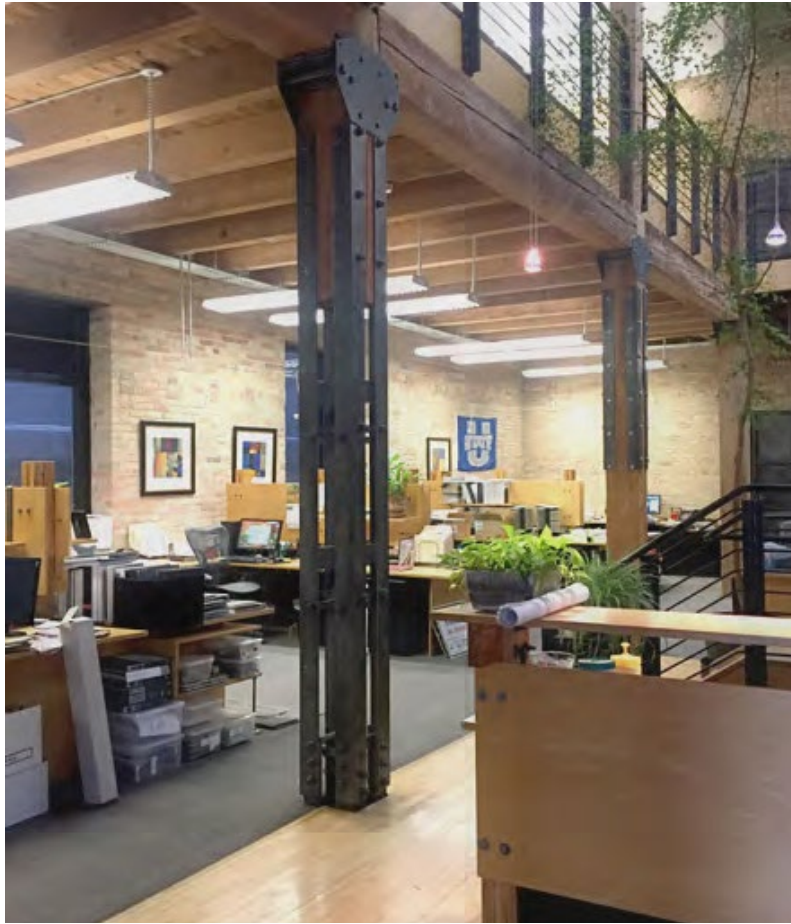
*Colliers International*  
2100 Pleasant Grove Blvd. | Suite 200  
Pleasant Grove, UT 84062  
P: +1 801 610 1300



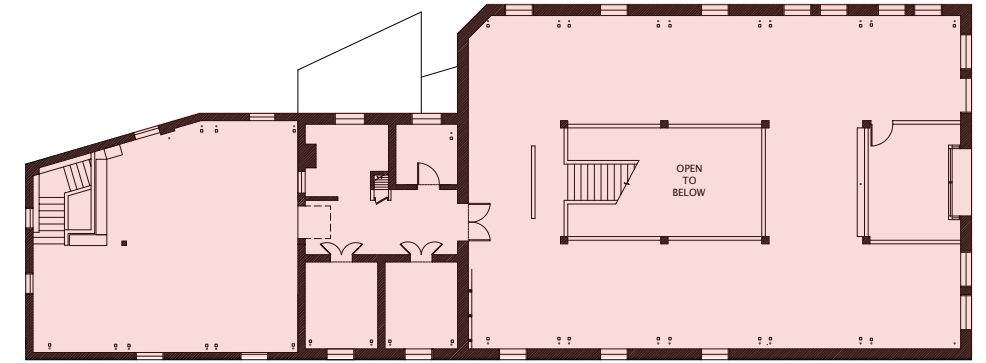
FOR SUBLEASE > OFFICE SPACE

# 336 South 400 West SLC

336 SOUTH 400 WEST SALT LAKE CITY, UTAH

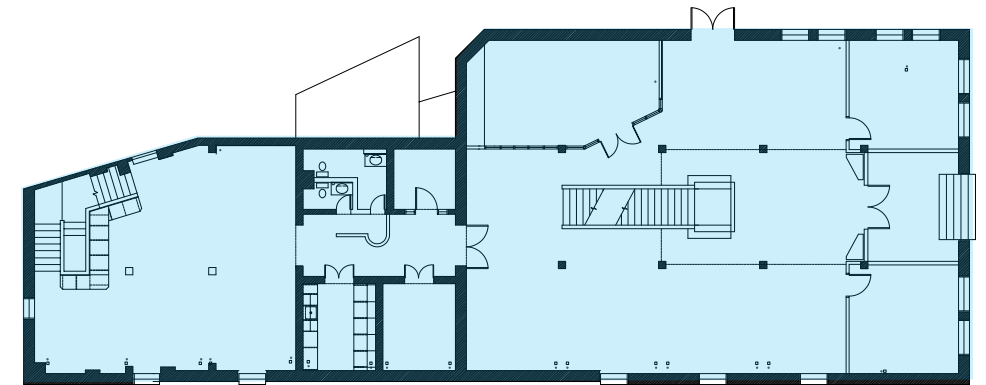


**UPPER FLOOR**  
5,000 RSF



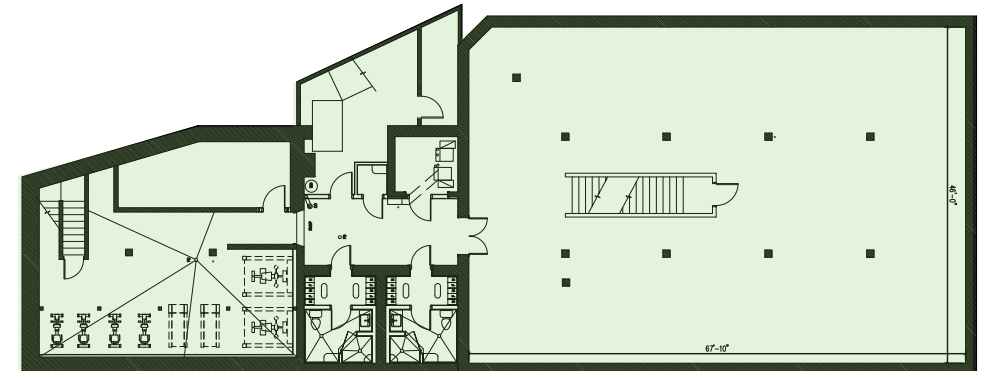
UPPER FLOOR  
Scale: 1/8" = 1'-0"

**MAIN FLOOR**  
5,500 RSF



MAIN FLOOR  
Scale: 1/8" = 1'-0"

**LOWER FLOOR**  
5,000 RSF



Colliers International  
2100 Pleasant Grove Blvd. | Suite 200  
Pleasant Grove, UT 84062  
P: +1 801 610 1300

