

# 120 BROADWAY



# SPACE DETAILS

## LOCATION

Southeast corner of Cedar Street and Broadway

## SPACE

Ground Floor	7,650 SF
Mezzanine	3,340 SF
Total	10,990 SF

## CEILING HEIGHTS

Ground Floor	17' 4"
Mezzanine	9'

## POSSESSION

November 1, 2016

## TERM

10 - 15 years

## FRONTAGE

Broadway	71'
Cedar Street	136'

## SITE STATUS

Currently HSBC

## NEIGHBORING RETAIL TENANTS

Zara, Chase, Citibank, Hermès, Tiffany & Co., Sephora, Tissot, Canali, Thomas Pink, Tumi, Anthropologie, COS, Capital Grille (120 Broadway), Nobu, Eataly, Apple, Crabtree & Evelyn, Longines, Breitling, Tom Ford, Hugo Boss, Charles Tyrwhitt, Turnbull & Asser, Urban Outfitters and GAP

## COMMENTS

Heavily trafficked corner with spectacular visibility

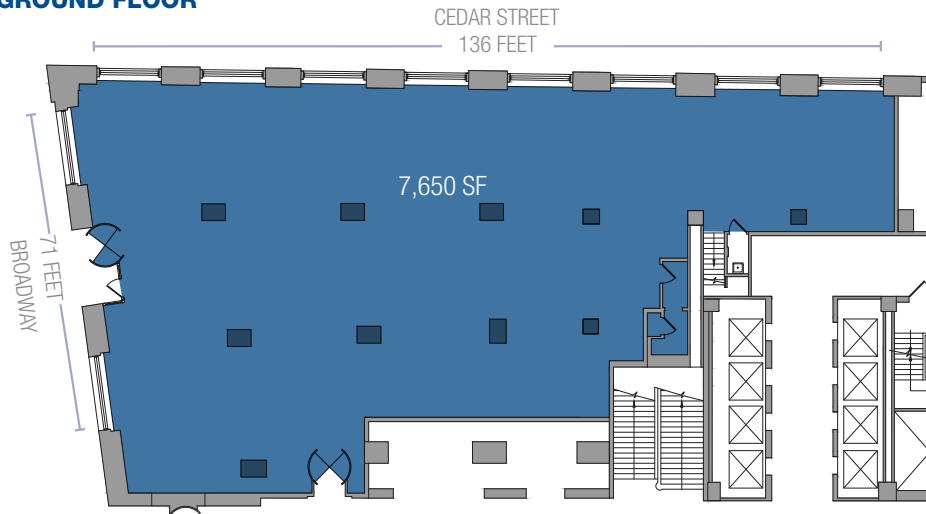
Direct building access to the **2** **3** **4** **5** **J** and **Z**

Steps from The Fulton Transit Hub, World Trade Center, Brookfield Place and the New York Stock Exchange

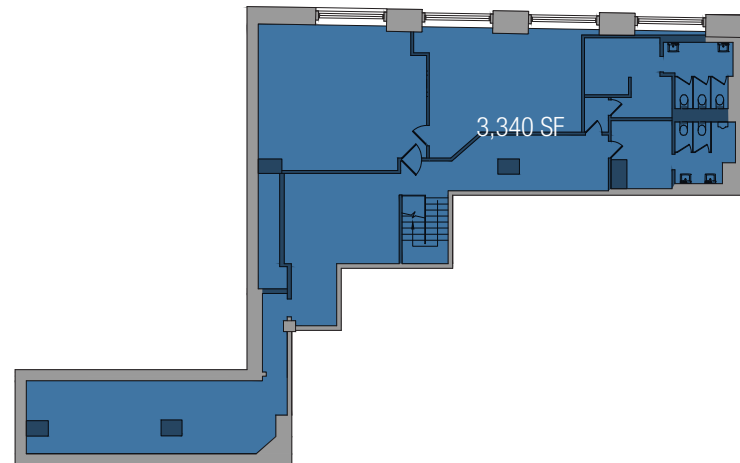
120 Broadway, the Equitable Building, is a National Historic Landmark

370,000 new jobs in Lower Manhattan expected by 2017

## GROUND FLOOR



## MEZZANINE



# AREA RETAIL



# THE NEIGHBORHOOD



120  
**BROADWAY**  
NEW YORK NY

## **CONTACT** AGENTS

**GARY ALTERMAN**  
212.916.3367  
galterman@rkf.com

**RICHARD GELBER**  
212.916.3366  
rgelber@rkf.com

**TARYN TALMADGE**  
212.916.3395  
ttalmadge@rkf.com



**521 FIFTH AVENUE**  
**FLOOR 7**  
**NEW YORK, NY 10175**  
212.599.3700  
INFO@RKF.COM  
RKF.COM

© 2016 ROBERT K. FUTTERMAN & ASSOCIATES, LLC All information is from sources believed reliable, not independently verified, and thus subject to errors, omissions, and modifications such as price, listing, square footage, rates and commissions. All information, estimates and projections subject to change, market assumptions, unknown facts and conditions, and future potentialities. RKF makes no express or implied representations or warranties, as facts and results may vary materially from all information, estimates and projections.

All renderings presented are conceptual.

**SILVERSTEIN**  
**PROPERTIES**