

FOR SUB-LEASE

Fremont Office/Retail Space



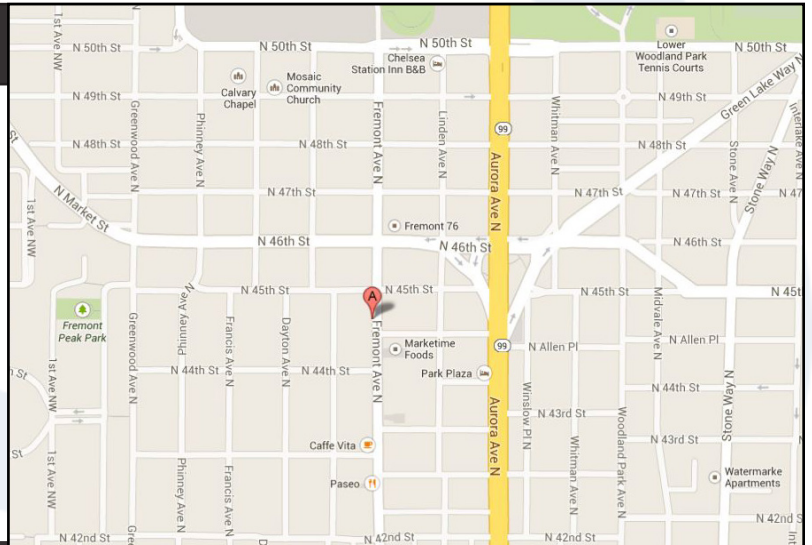
**4459 Fremont Ave N. Suite 2
Seattle, WA 98103**

Type	SF	Base Rent	NNN
Office/ Retail	653	\$1,200	\$240



PROPERTY FEATURES:

- 653 sf ground floor office or retail suite
- Join neighboring tenants – Paseo, Café Vita, Pecado Bueno, Uneeda Burger, American Music and Via Tribunali
- Includes reception area, two private rooms and a restroom
- Business available to transfer as a turnkey operation
- \$1,200/mo + NNN (\$240/mo) + electricity and janitorial
- NNN is also inclusive of water, sewage and garbage



FOR MORE INFORMATION PLEASE CONTACT:

Tai Lee

206.695.4832

tlee@ewingandclark.com

Tom Graff

206.295.1445

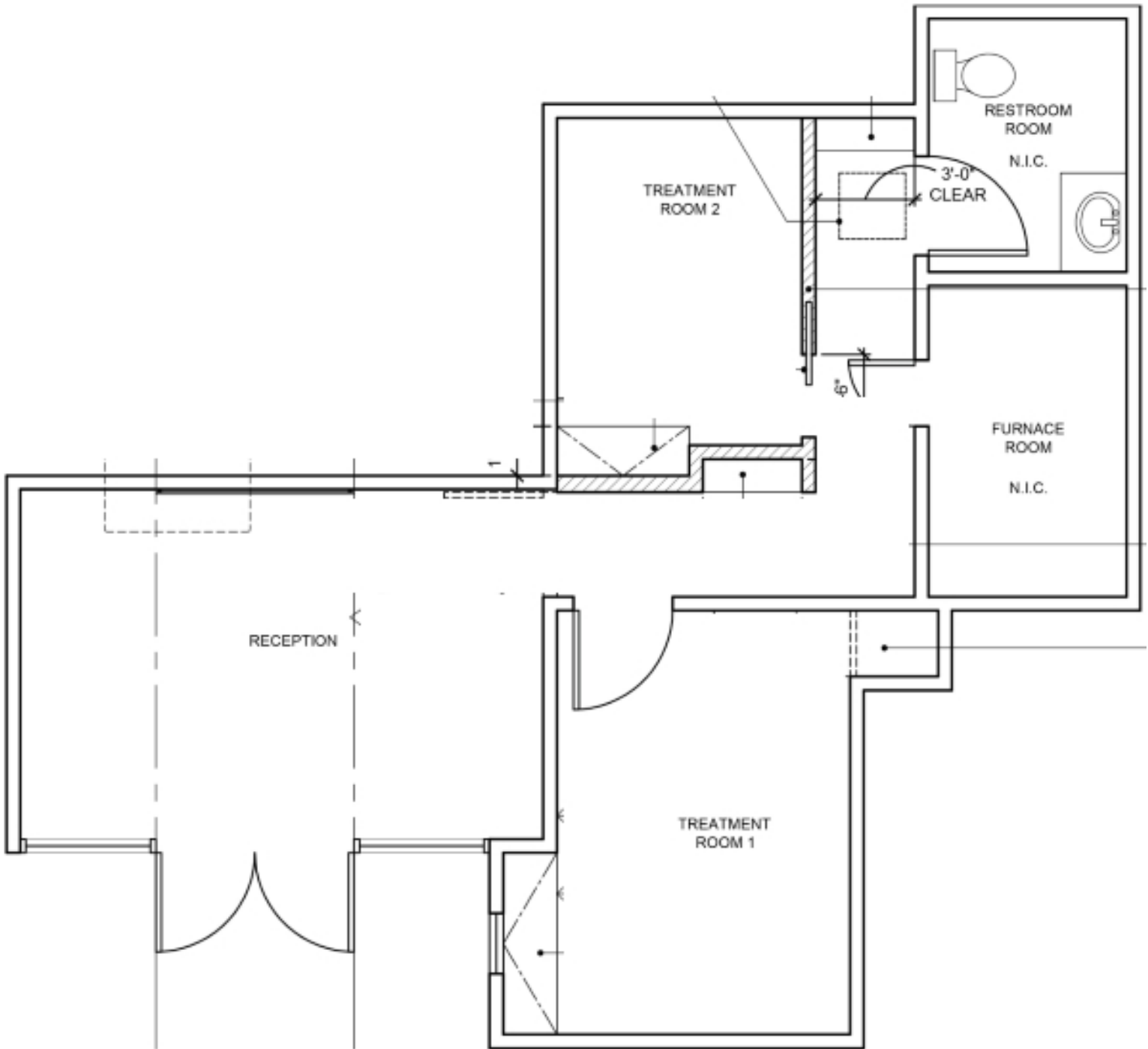
tomgraff@ewingandclark.com



This information has been obtained from sources believed reliable. While we do not doubt its accuracy, we have not verified it and make no guarantee, warranty or representation about it. It is your responsibility to independently confirm its accuracy and completeness.

2110 Western Ave., Seattle, WA 98121
www.EwingandClark.com

FLOOR PLAN



EWING & CLARK
INCORPORATED

Tai Lee
206.695.4832

Tom Graff
206.295.1445

2110 Western Ave., Seattle, WA 98121
www.EwingandClark.com

PICTURES

