

FOR LEASE

HENDRICKS REGIONAL HEALTH BROWNSBURG HOSPITAL
5492 RONALD REAGAN PARKWAY
BROWNSBURG, IN 46112



MULTI-SPECIALITY SUITE SPACE AVAILABLE EARLY 2018

LOOKING TO EXPAND YOUR PRACTICE OR ADD A MEDICAL OFFICE IN BROWNSBURG?

The all-new Hendricks Regional Health Brownsburg Hospital will feature a side-by-side Emergency Department and Immediate Care Center, along with many other services including lab and radiology, a comprehensive women's center, rehab services, physician offices, a retail pharmacy, the multi-specialty clinic and additional retail space.

BUILDING AMENITIES:

- 24-Hour security
- Walking trail
- Close parking
- Community rooms with AV and kitchenette access
- Ambassador customer service staff

THE MULTI-SPECIALTY SUITE WILL FEATURE:

- 3,300 square feet
- 9 exam rooms + 1 procedure room
- Registration/check-in + 1 check-out to the primary care area for registration
- Entrance & waiting area will be shared with adjoining primary care office
- Flexible leasing options

TARGET SERVICES:

- Urology
- Urogynecology
- Gynecology Oncology
- Behavioral Health
- Gerontology
- Dermatology
- Podiatry
- Rheumatology
- Endocrinology
- Hematology

FOR LEASING INFORMATION, PLEASE CONTACT RYAN WELLS OR MICHAEL NAPARIU AT REI REAL ESTATE SERVICES, LLC.

Ryan Wells

Director of Development

317-573-6043 (o) | 317-437-1125 (c) | 317-573-6055 (f)

rwells@reirealestate.com

Michael D. Napariu, CCIM, CPA (inactive)

Vice President, Sales & Leasing

317-573-6045 (o) | 317-691-3628 (c)

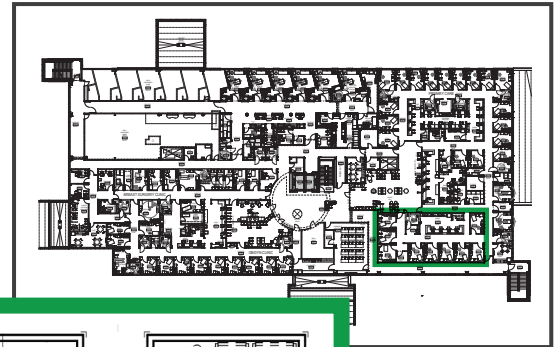
mnapariu@reirealestate.com

FOR LEASE

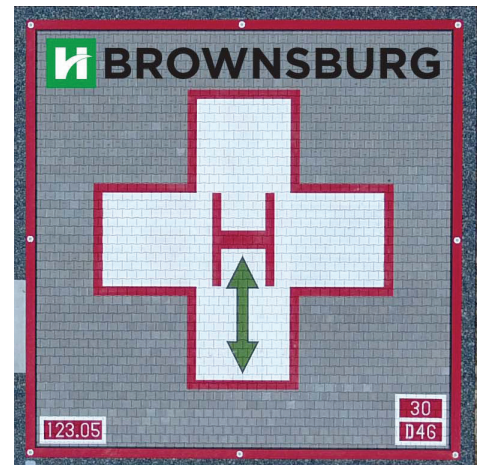
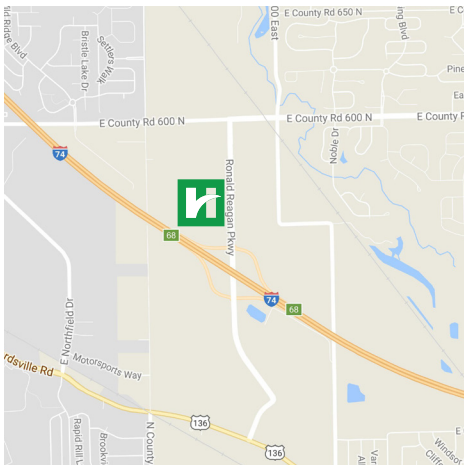
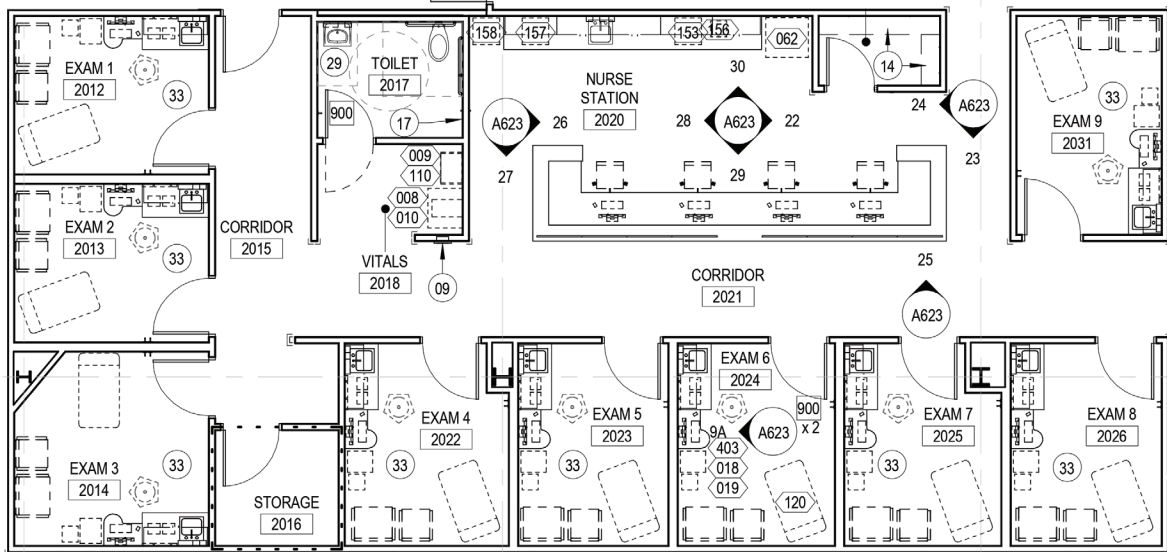
HENDRICKS REGIONAL HEALTH BROWNSBURG HOSPITAL
5492 RONALD REAGAN PARKWAY
BROWNSBURG, IN 46112



Hendricks
Regional Health



FLOORPLAN DETAILS



FOR LEASING INFORMATION, PLEASE CONTACT RYAN WELLS OR MICHAEL NAPARIU AT REI REAL ESTATE SERVICES, LLC.

Ryan Wells

Director of Development

317-573-6043 (o) | 317-437-1125 (c) | 317-573-6055 (f)

rwells@reirealestate.com

Michael D. Napariu, CCIM, CPA (inactive)

Vice President, Sales & Leasing

317-573-6045 (o) | 317-691-3628 (c)

mnapariu@reirealestate.com