



RATE REDUCTION!

±5,250 SF INDUSTRIAL SPACE AVAILABLE

FOR LEASE

1901 PICKWICK AVENUE, UNIT B | GLENVIEW, IL 60026

JOHN JOYCE, CCIM

847.588.5663

john.joyce@transwestern.com

JOHNNY JOYCE

847.588.5653

johnm.joyce@transwestern.com

MICHAEL BACIK

847.727.9100

michael@mwbacik.com

±5,250 SF INDUSTRIAL SPACE AVAILABLE

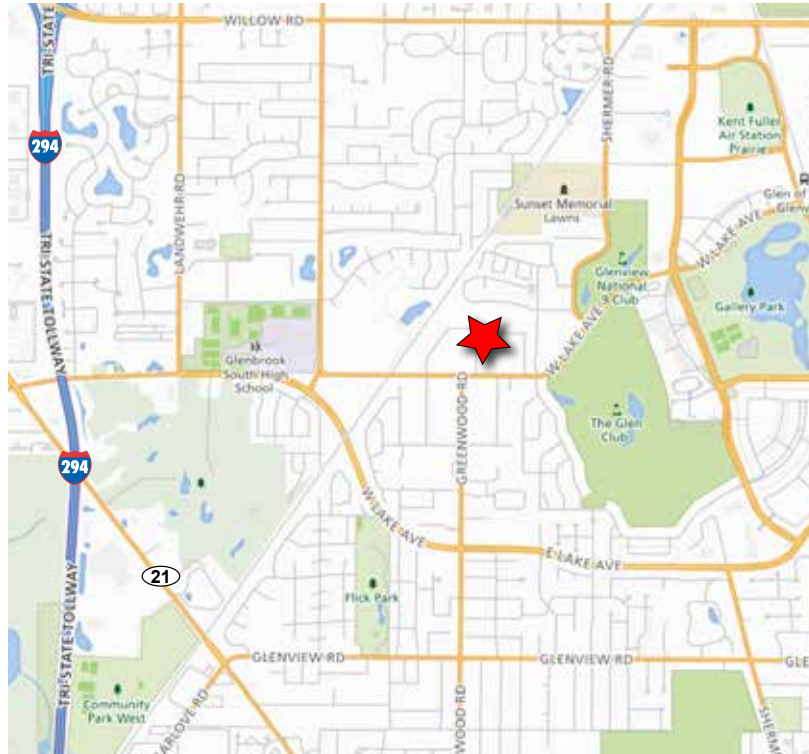
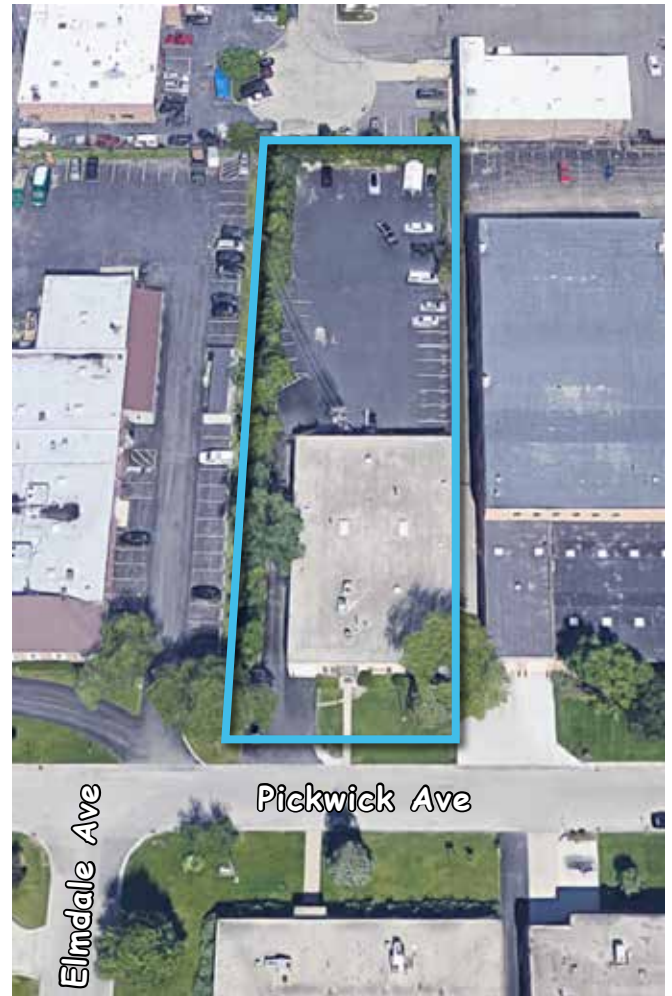
FOR LEASE

1901 PICKWICK AVENUE, UNIT B | GLENVIEW, IL 60026



SPECIFICATIONS

- Building Size: ±10,500 SF
- Available Size: ±5,250 SF
- Land Area: ±0.90 AC
- Office Area: ±1,200 SF
- Ceiling Height: 16'
- Loading: 1 Int. Dock / 1 DID (10' x 10')
- Construction: Masonry
- Year Built: 1982
- Power: 800 Amps
- Parking: ±20 Cars
- Heating: Gas
- Real Estate Taxes: \$3.10 PSF (2017)
- **Lease Rate: \$12.25 \$11.25 PSF MG**



HIGHLIGHTS

- Premier location
- Heavy parking
- Heavy power
- Rare small unit available in North Shore sub-market
- Immediate occupancy

JOHN JOYCE, CCIM
 847.588.5663
 john.joyce@transwestern.com

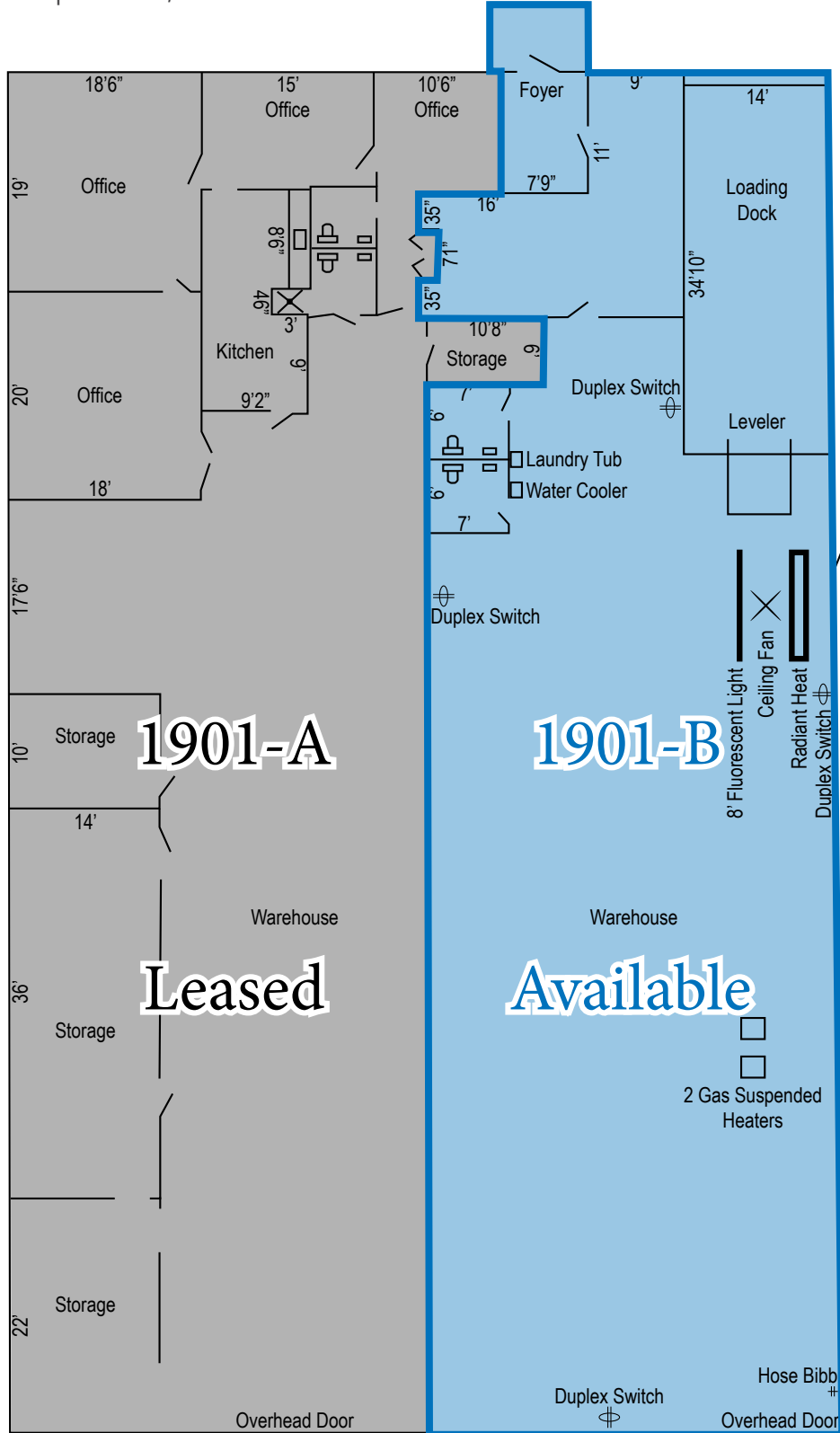
JOHNNY JOYCE
 847.588.5653
 johnm.joyce@transwestern.com

MICHAEL BACIK
 847.727.9100
 michael@mwbacik.com

±5,250 SF INDUSTRIAL SPACE AVAILABLE

FOR LEASE

1901 PICKWICK AVENUE, UNIT B | GLENVIEW, IL 60026



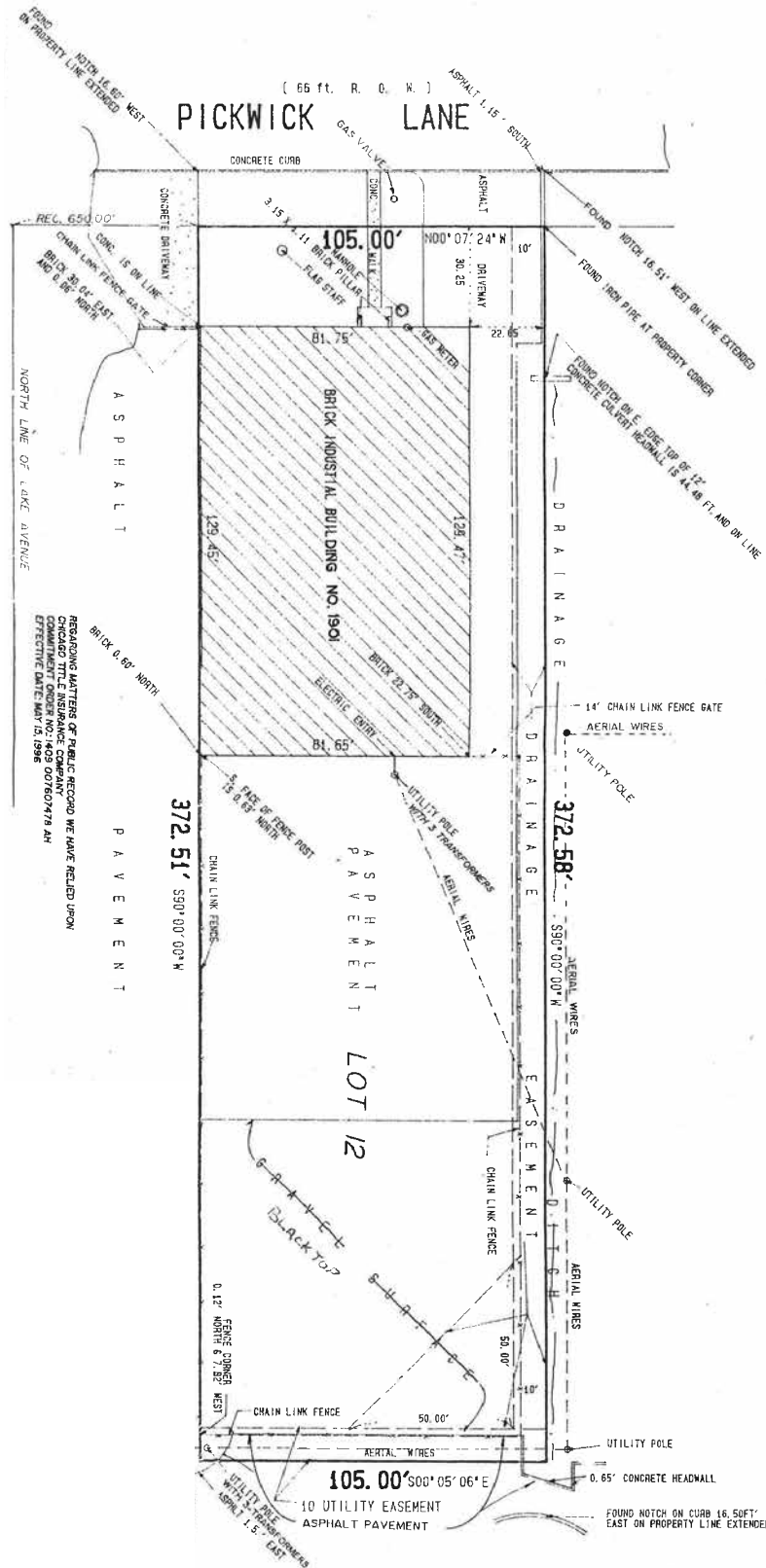
JOHN JOYCE, CCIM
 847.588.5663
 john.joyce@transwestern.com

JOHNNY JOYCE
 847.588.5653
 johnm.joyce@transwestern.com

MICHAEL BACIK
 847.727.9100
 michael@mwbacik.com

±5,250 SF INDUSTRIAL SPACE AVAILABLE
FOR LEASE

1901 PICKWICK AVENUE, UNIT B | GLENVIEW, IL 60026



JOHN JOYCE, CCIM
 847.588.5663
 john.joyce@transwestern.com

JOHNNY JOYCE
 847.588.5653
 johnm.joyce@transwestern.com

MICHAEL BACIK
 847.727.9100
 michael@mwbacik.com