



FOR LEASE

King Plow Arts Center

887 West Marietta Street, Unit S107
Atlanta, Georgia



Modern Two-Story Loft Office in Prime West Midtown

1,940 RSF Total Available Space, Unit S-107

- Starting rate is \$25.95/RSF, Modified Gross (rate excludes janitorial and utilities, which are separately metered)
- Four (4) offices, workstation area, and conference room
- Term: 5 - 7 Year Direct Lease
- Furniture available



Building Features & Location

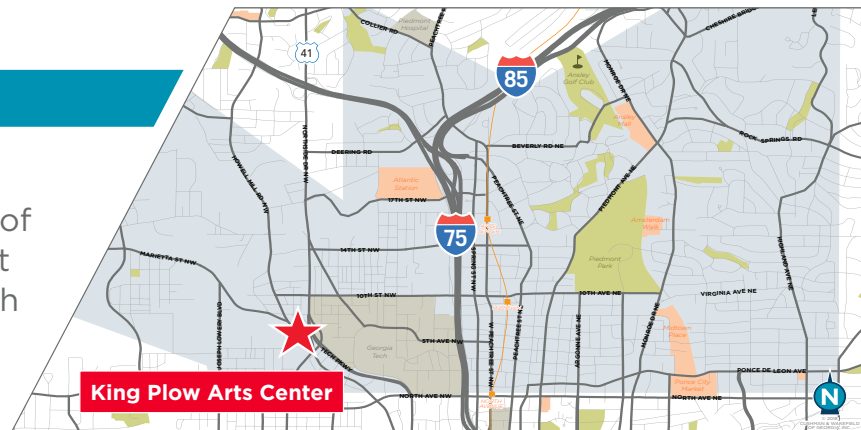
- Free parking; secured surface lot
- Part of historic mixed-use redevelopment of King Plow Arts Center and located in West Midtown, known as the Design District with numerous retail amenities nearby

Boris Garbuz
Director

P: +1 404 682 3418

C: +1 312 285 8172

boris.garbuz@cushwake.com



1180 Peachtree Street, NE, Suite 3100
Atlanta, Georgia 30309

www.cushmanwakefield.com

Cushman & Wakefield Copyright 2018. No warranty or representation, express or implied, is made to the accuracy or completeness of the information contained herein, and same is submitted subject to errors, omissions, change of price, rental or other conditions, withdrawal without notice, and to any special listing conditions imposed by the property owner(s). As applicable, we make no representation as to the condition of the property (or properties) in question.



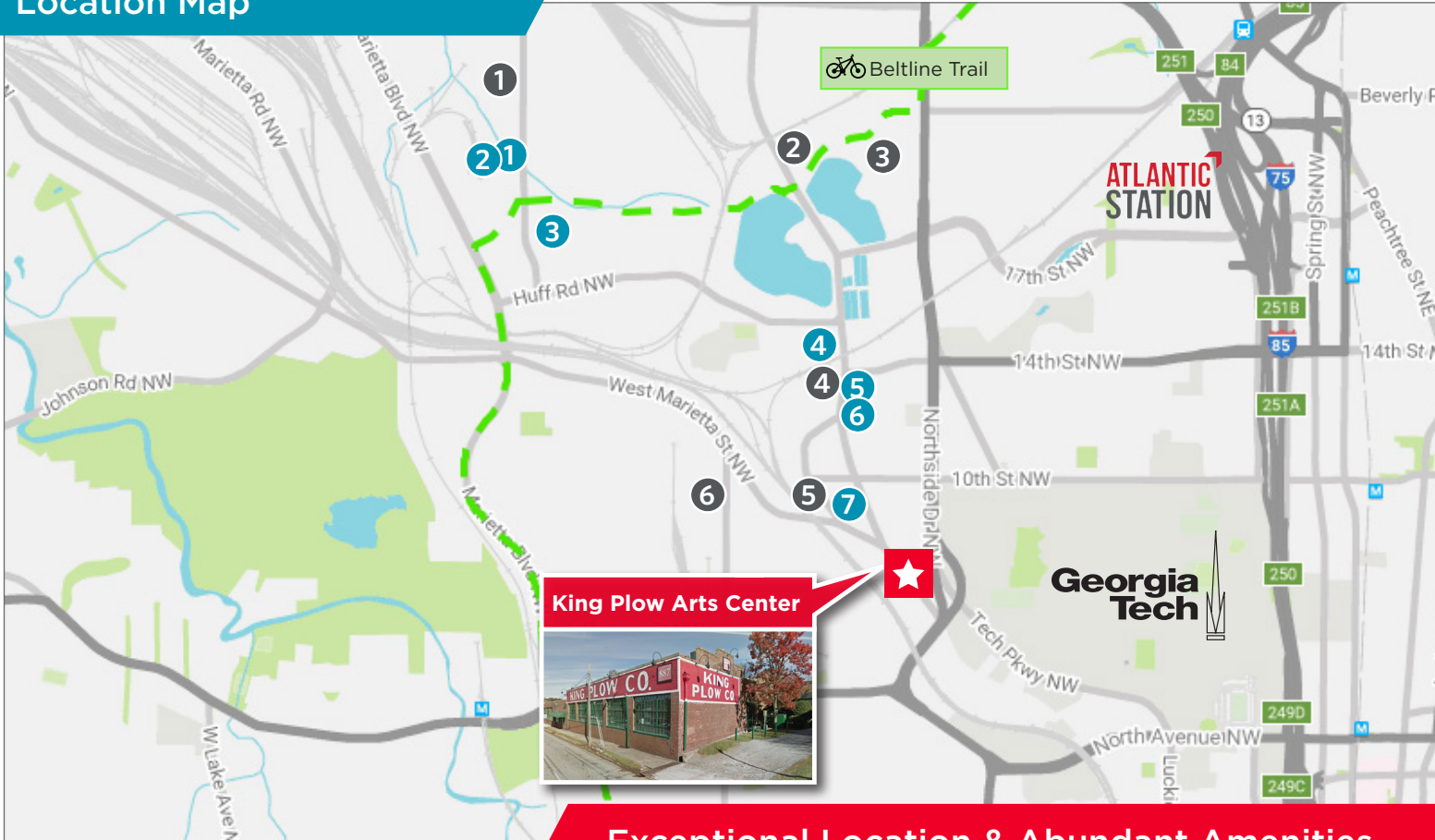
**CUSHMAN &
WAKEFIELD**

FOR LEASE

King Plow Arts Center

887 West Marietta Street, Unit S107
Atlanta, Georgia

Location Map



Exceptional Location & Abundant Amenities



WEST MIDTOWN RESTAURANTS

1	Bacchanalia	5	Barcelona Wine Bar
2	Star Provisions	6	Six Feet Under
3	Bone Garden Cantina	7	The Optimist
4	Westside/White Provisions (shown left): Yeah! Burger, Ormsby's, West Egg Cafe, Jeni's, JCT Kitchen, Marcel, Taqueria Del Sol		

WEST MIDTOWN ENTERTAINMENT

1	TopGolf	4	Northside Tavern
2	Urban Tree Cidery	6	The Painted Duck
3	Monday Night Brewing	6	Puritan Mill

Boris Garbuz
Director

P: +1 404 682 3418

C: +1 312 285 8172

boris.garbuz@cushwake.com

1180 Peachtree Street, NE, Suite 3100
Atlanta, Georgia 30309

www.cushmanwakefield.com

Cushman & Wakefield Copyright 2018. No warranty or representation, express or implied, is made to the accuracy or completeness of the information contained herein, and same is submitted subject to errors, omissions, change of price, rental or other conditions, withdrawal without notice, and to any special listing conditions imposed by the property owner(s). As applicable, we make no representation as to the condition of the property (or properties) in question.



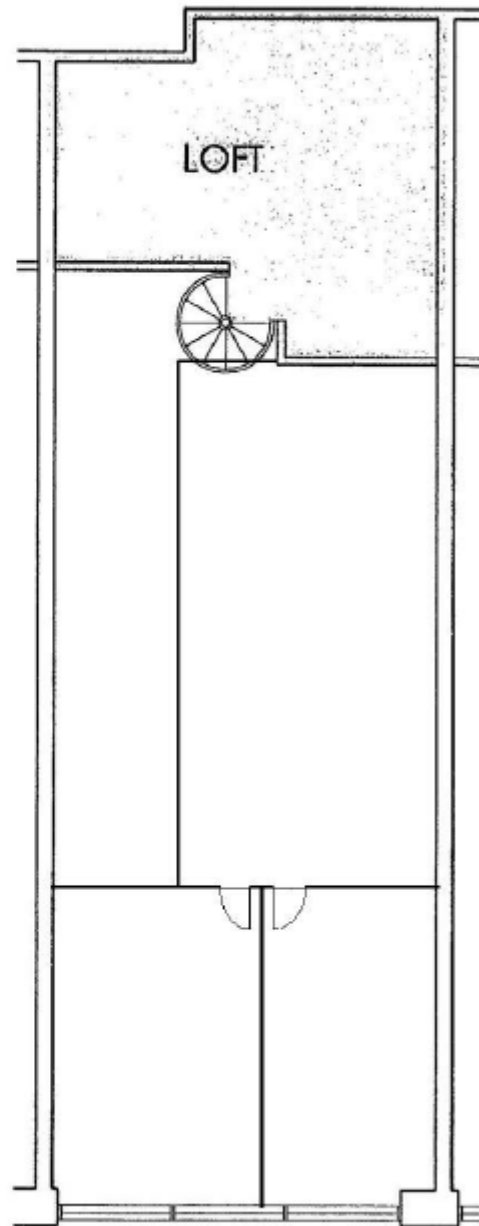
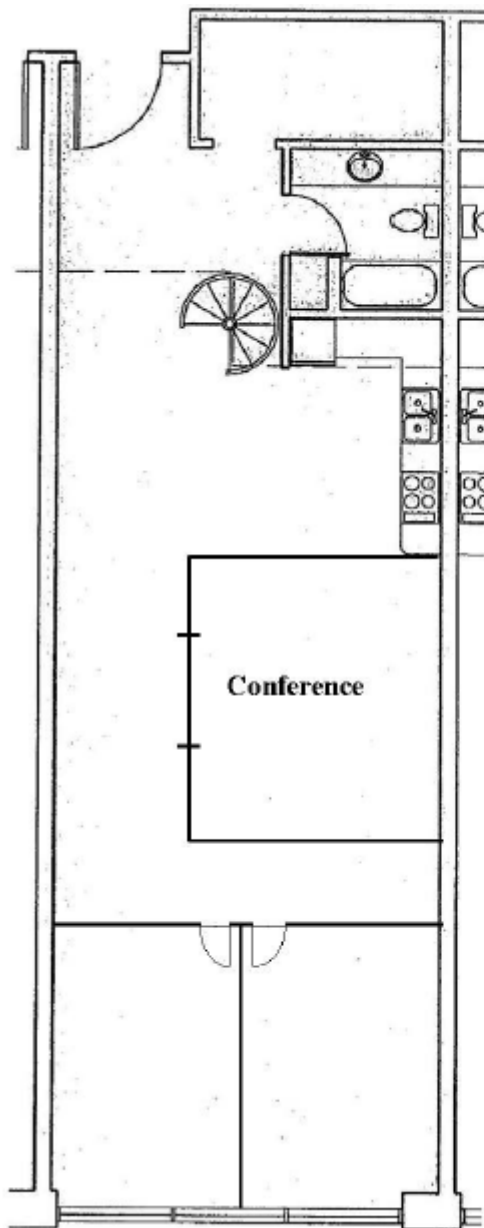
**CUSHMAN &
WAKEFIELD**

FOR LEASE

King Plow Arts Center

887 West Marietta Street, Unit S107
Atlanta, Georgia

Approximately 1,940 RSF



Boris Garbuz
Director

P: +1 404 682 3418

C: +1 312 285 8172

boris.garbuz@cushwake.com

1180 Peachtree Street, NE, Suite 3100
Atlanta, Georgia 30309

www.cushmanwakefield.com

Cushman & Wakefield Copyright 2018. No warranty or representation, express or implied, is made to the accuracy or completeness of the information contained herein, and same is submitted subject to errors, omissions, change of price, rental or other conditions, withdrawal without notice, and to any special listing conditions imposed by the property owner(s). As applicable, we make no representation as to the condition of the property (or properties) in question.

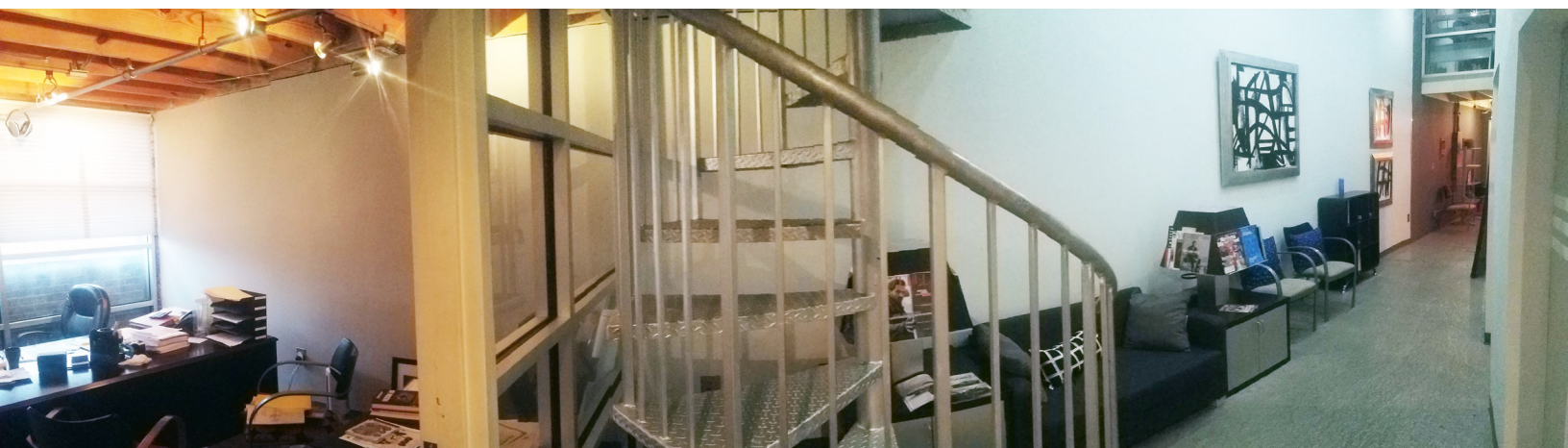


FOR LEASE

King Plow Arts Center

887 West Marietta Street, Unit S107
Atlanta, Georgia

Interior Photos



Boris Garbuz
Director

P: +1 404 682 3418

C: +1 312 285 8172

boris.garbuz@cushwake.com

1180 Peachtree Street, NE, Suite 3100
Atlanta, Georgia 30309

www.cushmanwakefield.com

Cushman & Wakefield Copyright 2018. No warranty or representation, express or implied, is made to the accuracy or completeness of the information contained herein, and same is submitted subject to errors, omissions, change of price, rental or other conditions, withdrawal without notice, and to any special listing conditions imposed by the property owner(s). As applicable, we make no representation as to the condition of the property (or properties) in question.