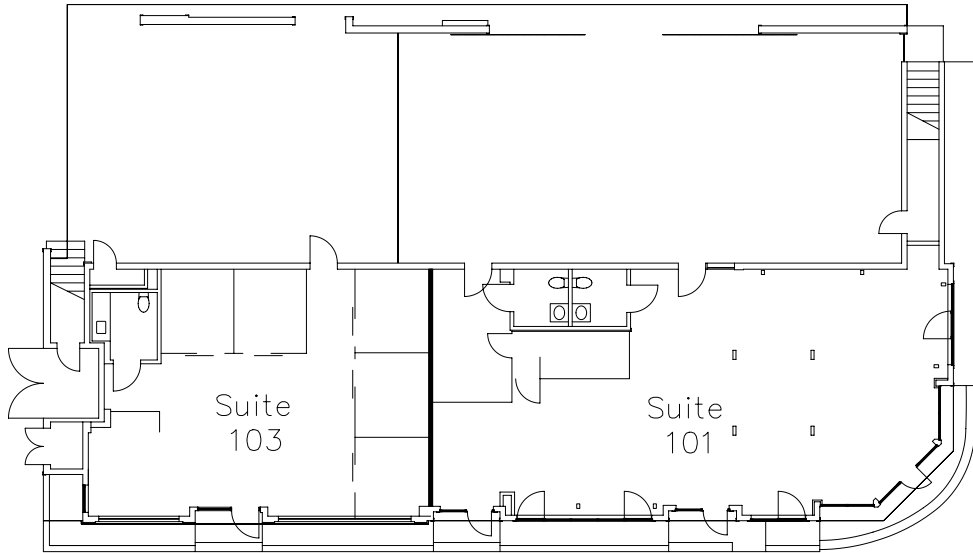


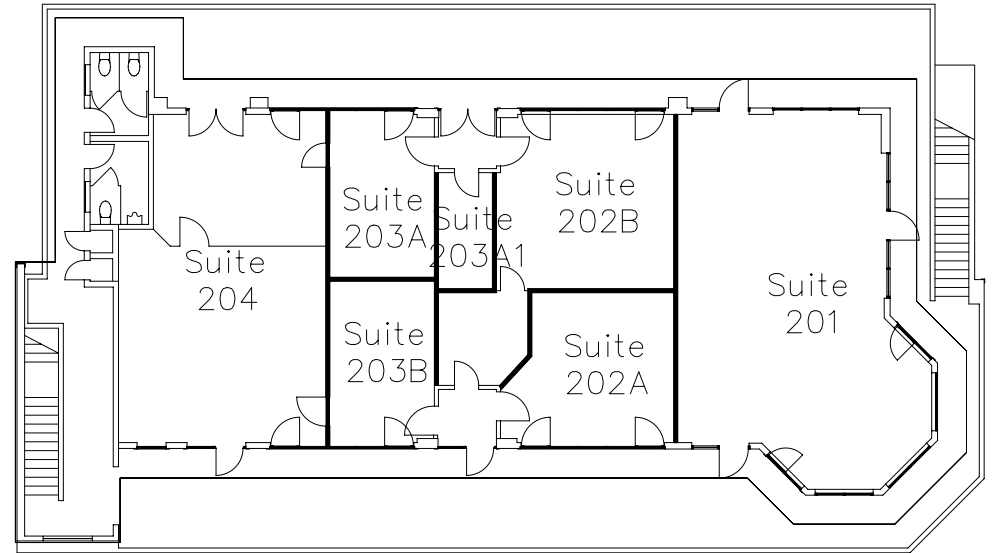


1500 W. BALBOA BOULEVARD | NEWPORT BEACH
PRIME OFFICE SPACE FOR LEASE

FLOOR PLANS
CALL FOR AVAILABILITY



FLOOR 1



FLOOR 2



A HIGH IDENTITY, VISIBLE LOCATION

Ideal, prominent corner location along Balboa Blvd on Balboa Peninsula.

PARKING

21 parking stalls available on site.

SIGNAGE

Making your presence known on a prominent highway in the highly desirable Newport Beach community.

ICONIC LOCAL AMENITIES

Give your employees and clients an excuse to spend more time at the office.

WALKING DISTANCE

To Newport Beach's iconic Marina Park, beach, bay, and public docks.

OUTDOOR PATIOS

With exceptional bay views overlooking the harbor and beautiful Newport Beach.

NEWLY RENOVATED

Institutional-quality retail/office building in highly-coveted peninsula location.





FOR LEASING INQUIRIES PLEASE CONTACT:

VILLA ASSET MANAGEMENT

949 698 1553

leasing@villarealestate.com

Lic# 01501802

VILLA