



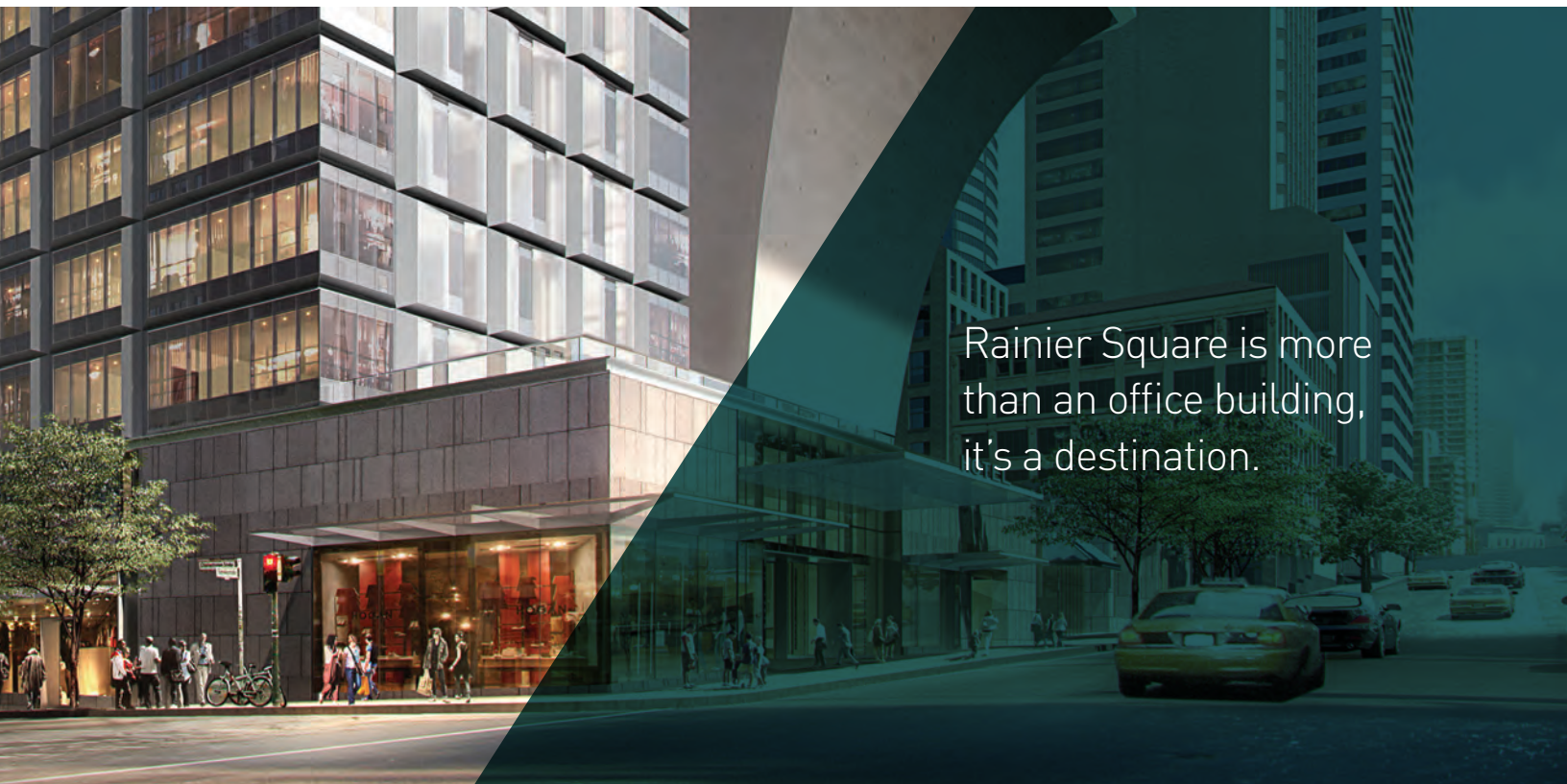
EVERYTHING MATTERS



SUBLEASE

COMING 2020

AMENITIES MATTER



Rainier Square is more than an office building, it's a destination.

MIXED USE AT ITS BEST

- ▲ 183 Luxury Residences
- ▲ World Class Equinox Gym
- ▲ Co-Working Spaces
- ▲ PCC Market
- ▲ Concierge Services
- ▲ Multiple Dining Options
- ▲ Rooftop Bar
- ▲ Bike Services



EQUINOX FITNESS CLUB



ROOF DECKS

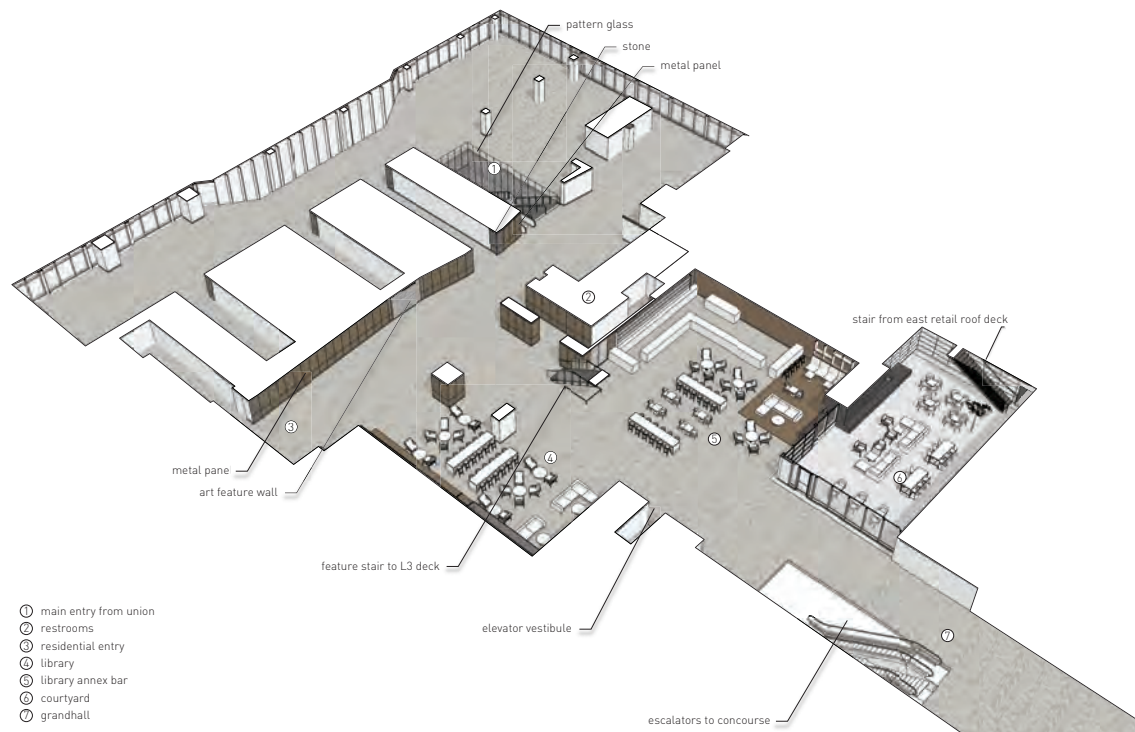


SHARED WORK SPACES

DESIGN MATTERS

World-class design that delivers form and function.

The geometry of the new tower at Rainier Square is a nuanced, reciprocal response to its neighbors, giving the entire development an iconic quality that stands tall in the center of the city.



FLOOR PLATES

Largest floor plates in the CBD for greater efficiency and collaboration and smaller floor plates for executive firms.

ARCHITECTURE

Forward looking and unique design by internationally acclaimed architect, NBBJ.

FEATURES

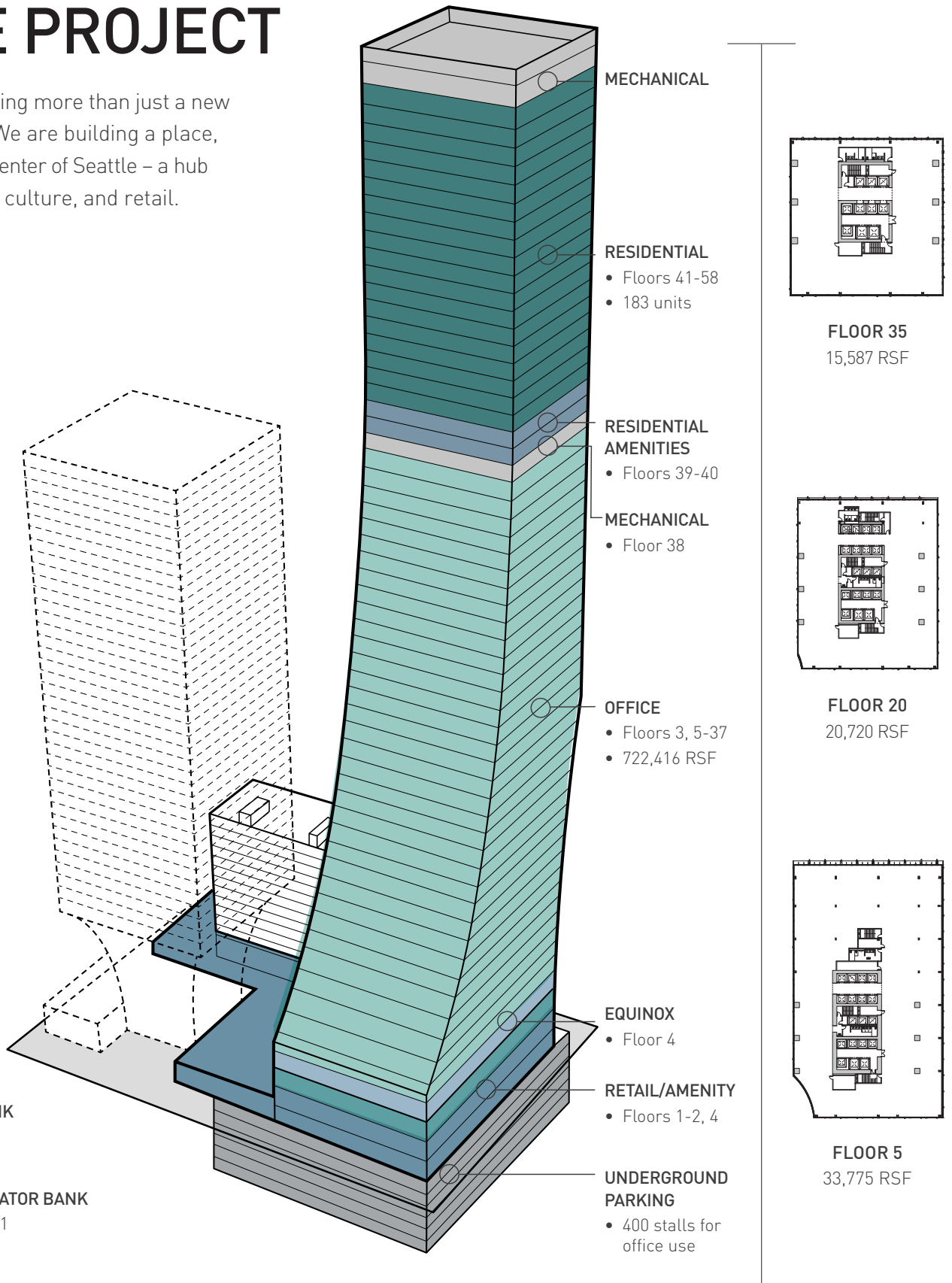
Tenant spaces have **13'9" slab-to-slab height with 10'-0" finished ceilings, expansive window lines and epic views** to create space where employees want to be.

SYSTEMS

State of the art systems for **HVAC, elevators, and security** are designed for optimal comfort and safety.

ONE BLOCK ONE PROJECT

We are offering more than just a new skyscraper. We are building a place, right in the center of Seattle – a hub of business, culture, and retail.



FOR LEASING:



601 Union Street, Suite 2800
Seattle, WA 98101
jll.com/seattle

Cleita Harvey

+1 206 607 1794

cleita.harvey@am.jll.com

Jim Allison

+1 206 607 1787

jim.allison@am.jll.com



Jones Lang LaSalle Brokerage, Inc.

©2019 Jones Lang LaSalle IP, Inc. All rights reserved. All information contained herein is from sources deemed reliable; however, no representation or warranty is made to the accuracy thereof.

