

PRIME RETAIL
OPPORTUNITY
FOR LEASE

3,697 SF (Street)
4,000 SF (Lower Level)

410 BOYLSTON STREET

BOSTON, MASSACHUSETTS



FOR MORE INFORMATION, PLEASE CONTACT

EMILY OU
EXCLUSIVE AGENT
617.204.4142



410 BOYLSTON STREET

BOSTON, MASSACHUSETTS

BACK BAY DEMOGRAPHICS

2014 Average Household Income **\$126,933**

2014 Estimated Total Households **11,337**



ARLINGTON
STATION



410
BOYLSTON STREET

COPLEY
STATION



JOHN
HANCOCK
TOWER

NEWBURY STREET

PRUDENTIAL
CENTER



PRUDENTIAL
STATION

BOYLSTON STREET

BACK BAY

Nestled in historic Back Bay's rich urban
environment with **SUPERIOR MBTA ACCESS**

Located in Boston's
PREEMINENT SHOPPING DESTINATION

±4,961 SF of highly visible retail space

11,337 residential units in the
surrounding neighborhood

13.9 million square feet of office space
within a five minute walk

AREA
TENANTS



RH
RESTORATION HARDWARE



LUX BOND & GREEN

MODELL'S
SPORTING GOODS
Gotta Go to Mo's



PAPER SOURCE

exhale
MINDBODYSPA



FOR MORE INFORMATION, PLEASE CONTACT

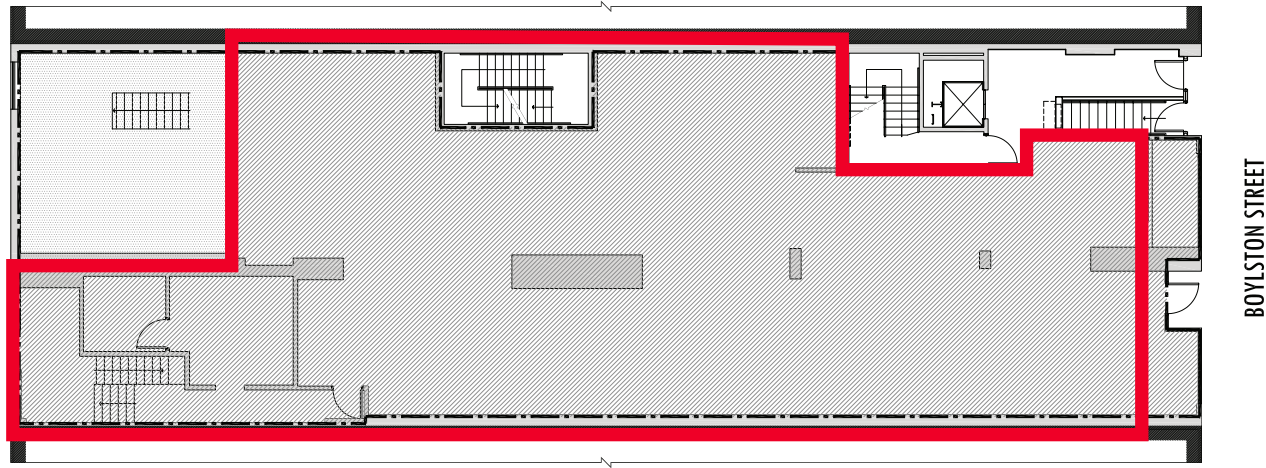
EMILY OU | EXCLUSIVE AGENT | 617.204.4142



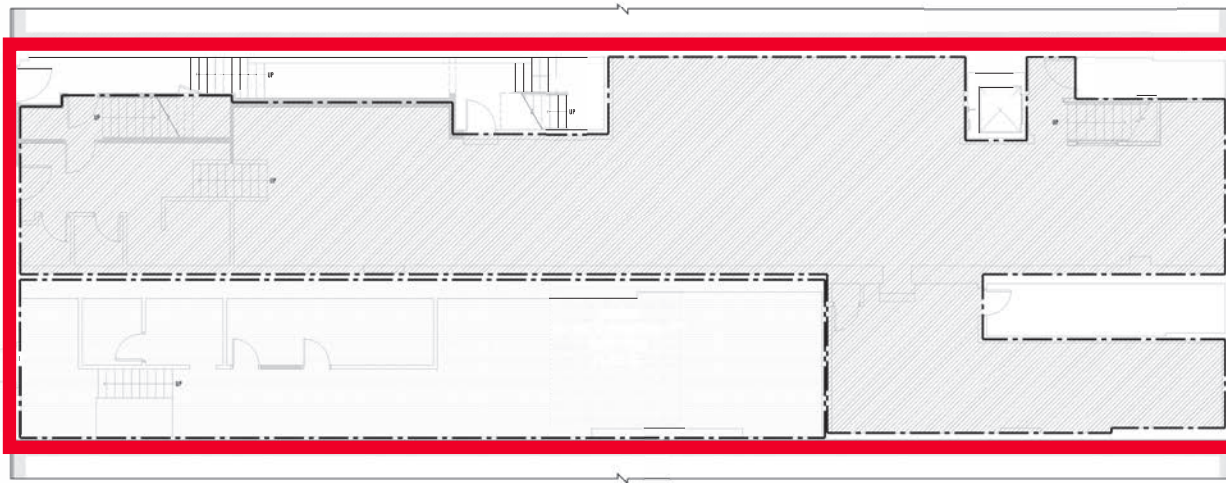
410 BOYLSTON STREET

BOSTON, MASSACHUSETTS

First Floor | ±3,697 SF



Lower Level | ±4,000 SF



FOR MORE INFORMATION, PLEASE CONTACT

EMILY OU | EXCLUSIVE AGENT | 617.204.4142

410 BOYLSTON STREET



LOCATED IN BOSTON'S

PREMIER RETAIL DISTRICT



FOR MORE INFORMATION, PLEASE CONTACT

EMILY OU
EXCLUSIVE AGENT
617.204.4142