



Riverfront Technical Park

2811 South 102nd Street
Seattle WA 98121 // Floor 1

Description

Riverfront Technical Park is a 175,000 sf office building located in the South Seattle area, with easy access to I-5, I-405, Hwy 99 and East Marginal Way. Its proximity to Boeing field has made it attractive to the aeronautics industry. In addition to great location, Riverfront Technical Park offers excellent parking and heavy electrical infrastructure making it also ideal for training office or call centers.

Highlights

- Ample contiguous square footage
- Minutes to downtown Seattle, SeaTac Airport and Boeing Field
- Abundant parking
- Secure card access
- Multiple fiber carriers
- Loading dock
- Immediately adjacent to US Post Office



Scan for more information.

To view on your mobile device,
download a QR reader app through
your device's app store.

Joe Sabey
joes@sabey.com
206.281.8700

Clete Casper
cletec@sabey.com
206.277.5229

SABEY

12201 Tukwila International Blvd. 4th Floor
Seattle, WA 98168 | Visit us at sabey.com



Riverfront Technical Park

2811 South 102nd Street
 Seattle WA 98121 // Floor 1

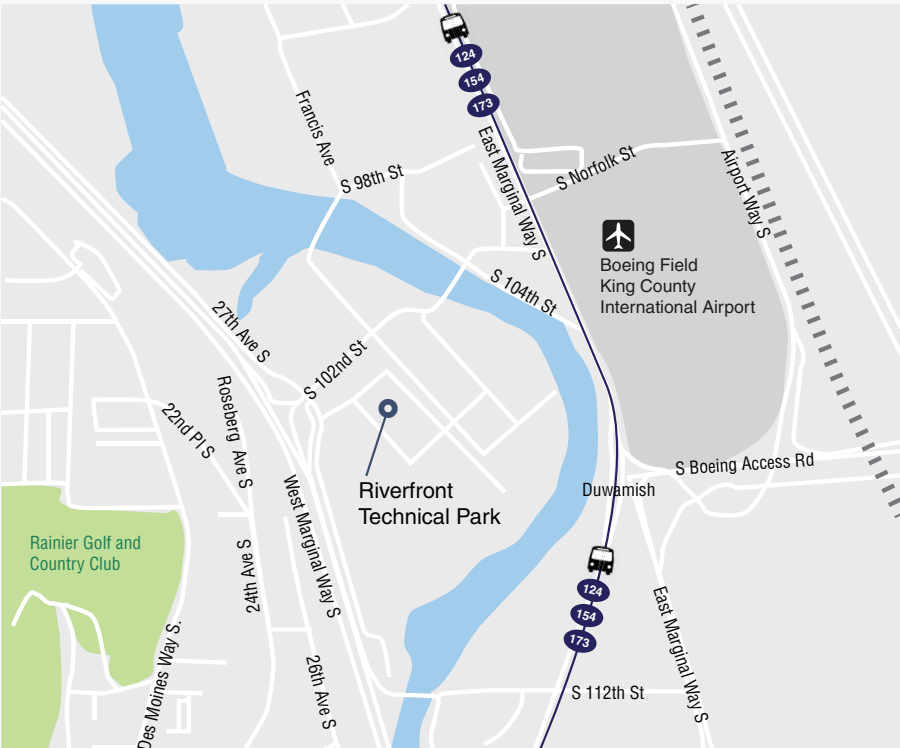
Riverfront Technical Park is close to the best of Seattle's urban environment. Drop into the spectacular Museum of Flight at close-by Boeing Field for a relaxing lunch and watch the Boeing planes arrive and depart. Relax on the patio overlooking the course at the Foster Golf Links. Or head to Seattle just twelve minutes away to relax at one of its many popular spots. Services and shopping are also just minutes away at Westfield-Southcenter Mall.

MAJOR FREEWAYS & TRANSPORTATION

Hwy 99
 I-5
 405

SHOPPING & SIGHT SEEING

Museum of Flight
 Foster Golf Links
 Rainier Golf and Country Club
 Westfield-Southcenter Shopping Center
 SeaTac International Airport



Metro Transit // Routes 124, 154, 173
 Riverfront Technical Park is served by these King County Metro transit routes.



Scan for more information.
 To view on your mobile device, download a QR reader app through your device's app store.

Joe Sabey
 joes@sabey.com
 206.281.8700

Clete Casper
 cletec@sabey.com
 206.277.5229



12201 Tukwila International Blvd. 4th Floor
 Seattle, WA 98168 | Visit us at sabey.com

Riverfront Technical Park

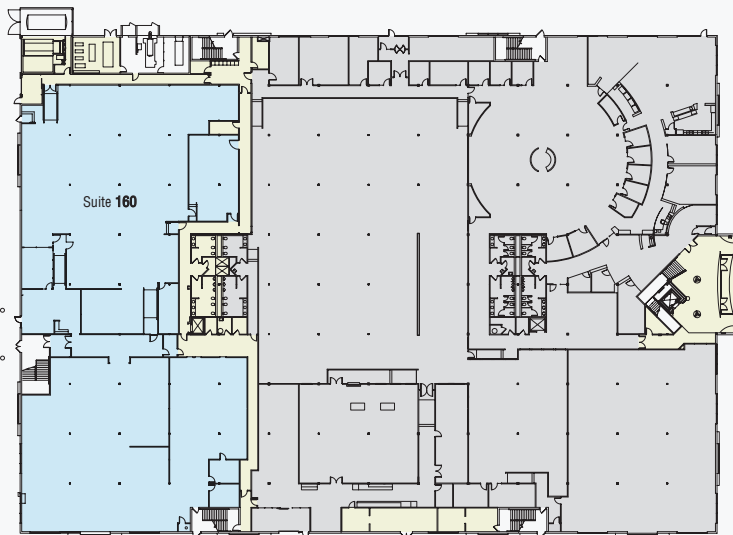
2811 South 102nd Street

Seattle WA 98168



Highlights

- Large, efficient, open floor plans
- Ample contiguous square footage
- Spacious, well-appointed lobby



First Floor

Suite 160 // Square Footage: 23,687 rsf

■ Available ■ Floor Common ■ Leased



Second Floor

Executive Office / Conference Center

Suite 230 // Square Footage: 9,801 rsf

Suite 250 // Square Footage: 29,320 rsf



Scan for more information.

To view on your mobile device, download a QR reader app through your device's app store.

Joe Sabey
joes@sabey.com
206.281.8700

Clete Casper
cletec@sabey.com
206.277.5229

SABEY

12201 Tukwila International Blvd. 4th Floor
Seattle, WA 98168 | Visit us at sabey.com