

# FOR LEASE

## 11201 Hopson Road (Ashland, VA) Located In The Hanover Industrial Air Park!



### Exclusive Agent:

Kevin E. Cox  
804.521.1468  
[kevin@porterinc.com](mailto:kevin@porterinc.com)

4801 Radford Avenue  
P.O. Box 6482  
Richmond, VA 23230  
804.353.7994  
[www.porterinc.com](http://www.porterinc.com)

### Office/Warehouse Space Available

- Suite A - 3,960 SF +/-
- Available September 2018: Suite D - 2,250 SF +/-
- 19'-22' Ceiling Height
- Zoned M-3
- Loading 10' by 10'
- FOR LEASE: \$10.00/SF
- Tenant pays for water/sewer, trash, electricity, phone/internet

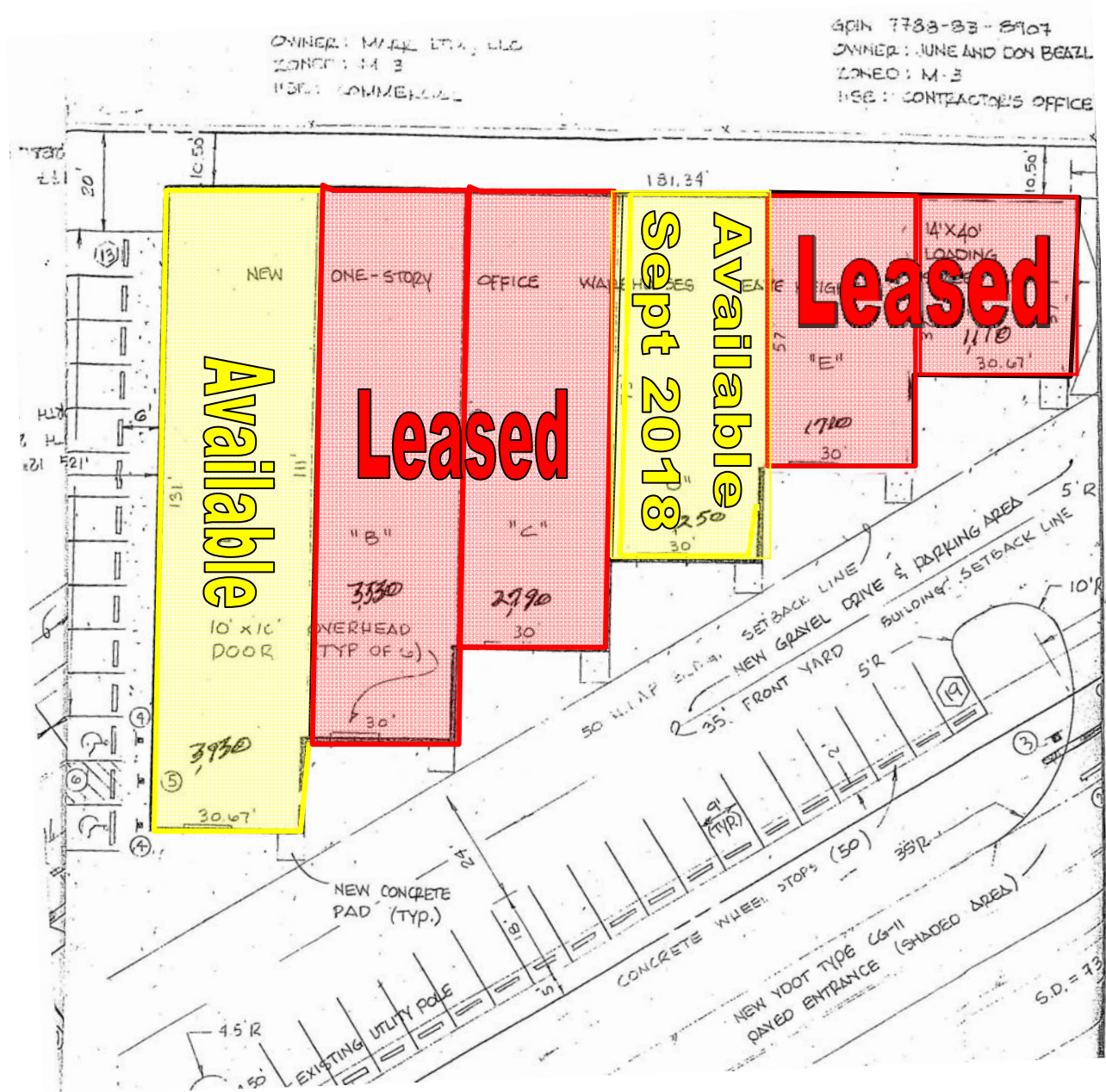


Working Hard, Working Smart... For Our Customers



No warranty or representation is made as to the accuracy of the foregoing information. Terms of sale or lease and availability are subject to change or withdrawal without notice.

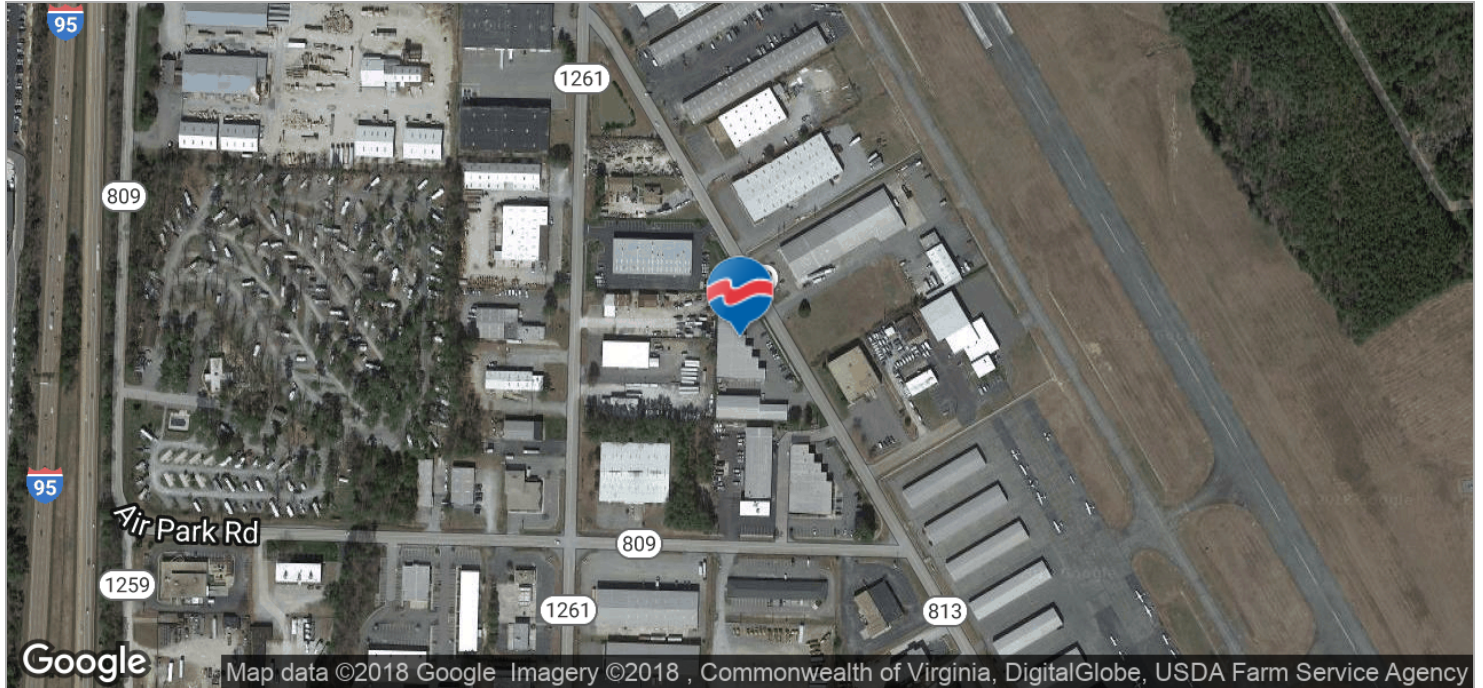
**11201 Hopson Rd, Ashland, VA 23005**  
**Hanover Industrial Air Park**





# 11201 Hopson Road, Ashland, VA 23005

## Industrial Property For Lease



Kevin E. Cox  
804.521.1468  
[kevin@porterinc.com](mailto:kevin@porterinc.com)

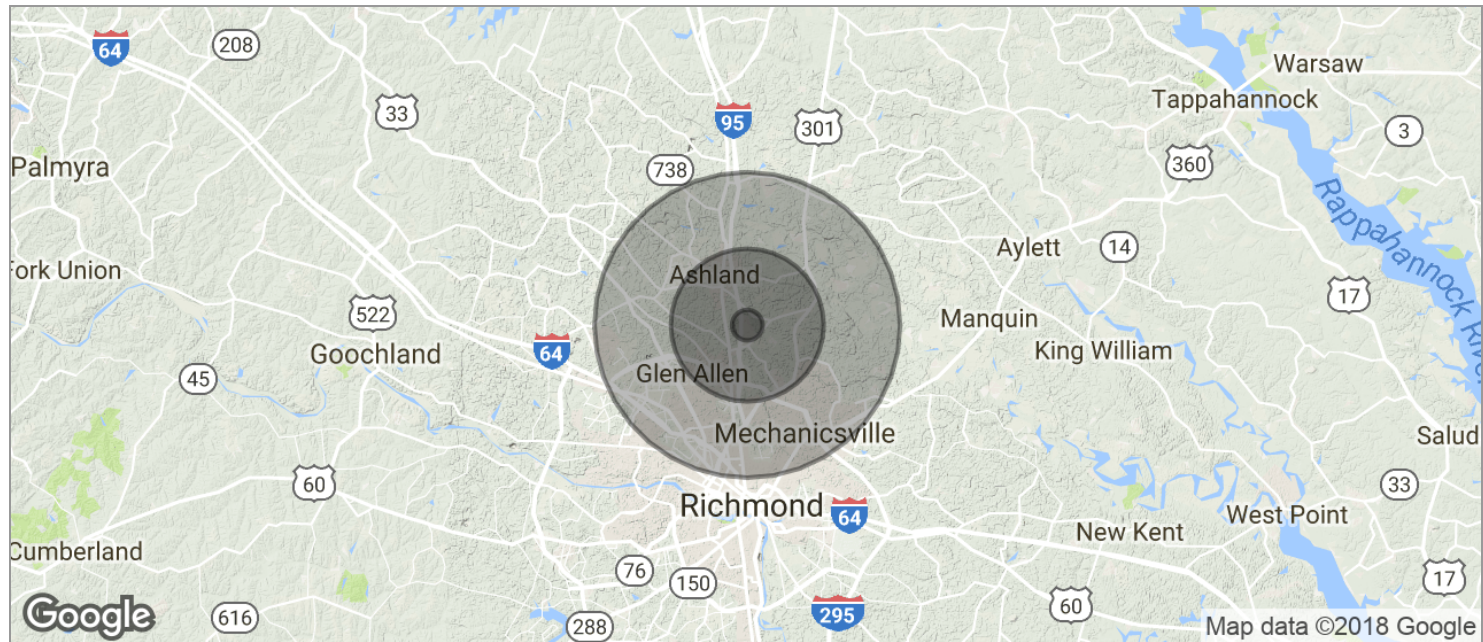


4801 Radford Avenue, P.O. Box 6482, Richmond, VA 23230 | [www.porterinc.com](http://www.porterinc.com)

No warranty or representation is made as to the accuracy of the foregoing information. Terms of sale or lease and availability are subject to change or withdrawal without notice.

# 11201 Hopson Road, Ashland, VA 23005

## Industrial Property For Lease



POPULATION	1 MILE	5 MILES	10 MILES
TOTAL POPULATION	824	51,031	262,419
MEDIAN AGE	38.7	38.3	38.6
MEDIAN AGE (MALE)	36.9	36.4	36.6
MEDIAN AGE (FEMALE)	40.6	40.1	40.4
HOUSEHOLDS & INCOME	1 MILE	5 MILES	10 MILES
TOTAL HOUSEHOLDS	276	18,556	106,884
# OF PERSONS PER HH	3.0	2.8	2.5
AVERAGE HH INCOME	\$105,040	\$90,136	\$71,507
AVERAGE HOUSE VALUE	\$313,427	\$295,014	\$267,696

\* Demographic data derived from 2010 US Census