

PARKWAY COMMONS

5068 W. PLANO PARKWAY, PLANO, TX 75093

PARKWAY-COMMONS.COM



building interior renovations: **COMPLETE**

PARKWAY-COMMONS.COM

Parkway Commons
renovations are complete!
Say hello to our brand new
contemporary lobby with
tenant lounge, renovated
common areas, restrooms
and elevator modifications.

BUILDING DETAILS

Number of Floors: 3

Net Rentable Area: 102,815 RSF

Floor Plate Size: 35,941 RSF

Year Built: 1986 / 2018 Renovation

Parking: 3.5/1,000 RSF

Covered Parking Available

Full Floor Available with Building Signage

Monument Signage Available

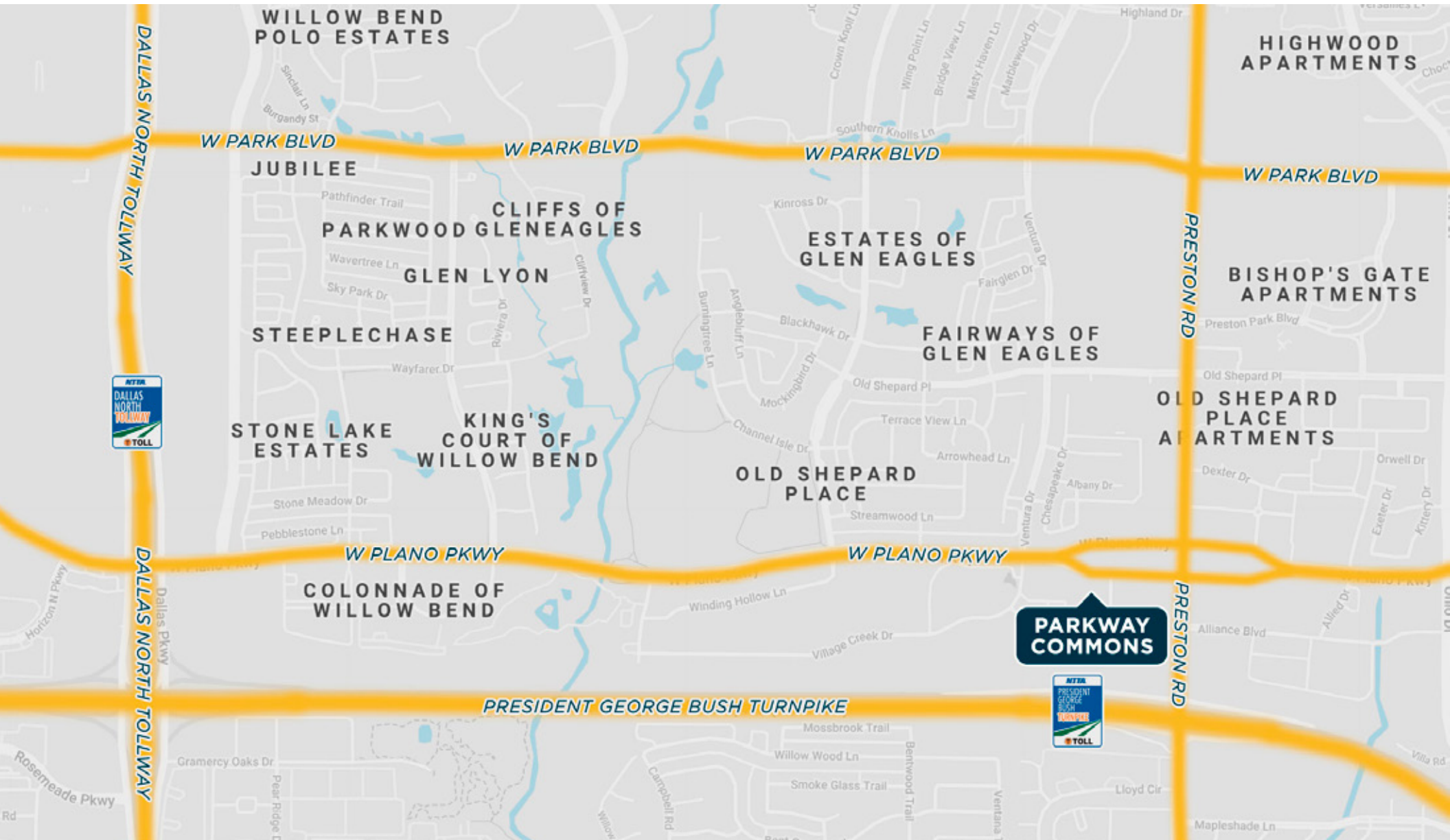
Quoting: \$23.50 + E

Electric: \$1.50

Close Proximity to Retail & Restaurants

Access: Close Proximity to President George Bush Turnpike and the Dallas North Tollway





PARKWAY COMMONS

5068 W. PLANO PARKWAY, PLANO, TX 75093

PARKWAY-COMMONS.COM

LEASING

JOEL PUSTMUELLER
 JPUSTMUELLER@PELTONCRE.COM
 214 220 0600

ANDREW SCUDDER
 ASCUDDER@PELTONCRE.COM
 214 220 0600