

FOR LEASE - Build to Suit



Mount Hood Professional Plaza II

24076 SE Stark Street

Gresham, Or 97030

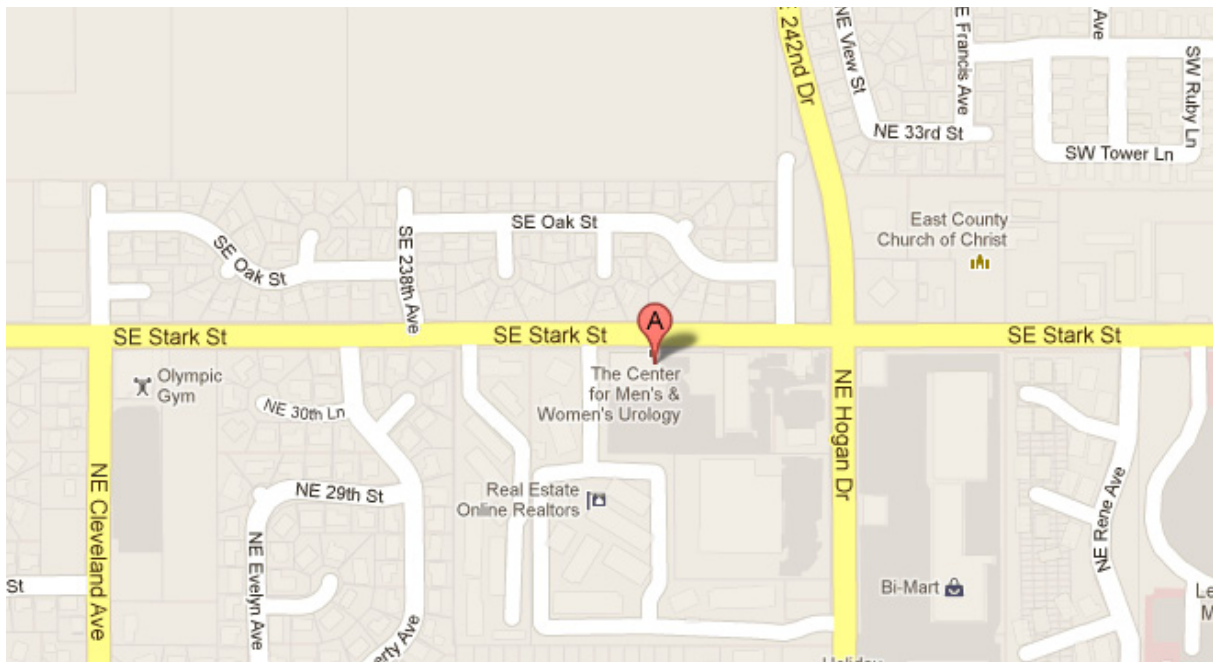
- **Build-to-suit medical available for pre-leasing** (delivery 12 months from lease execution)
- **Elevator served**
- **Rate: \$29/SF/NNN**
- **1st floor approximately 8,300 SF (divisible)**
- **2nd floor approximately 7,000 SF (divisible)**

CONTACT

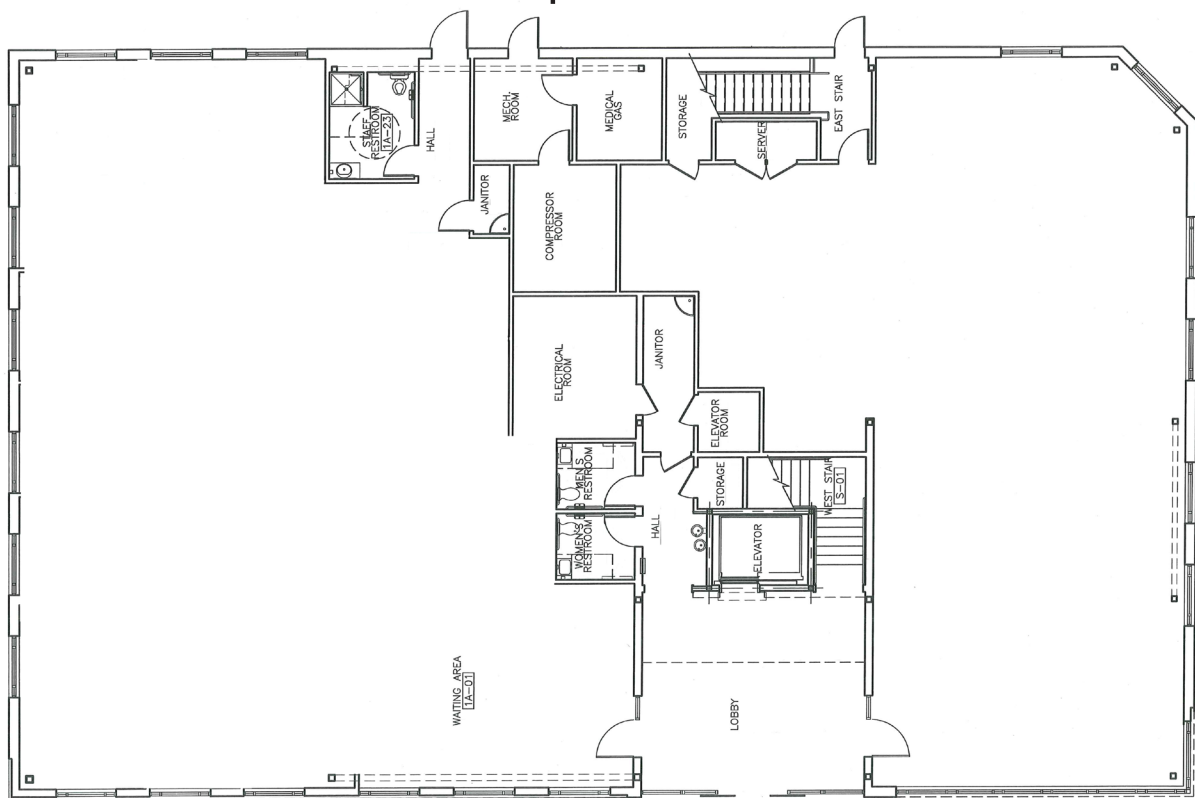
Benjamin S McInnis
503-208-8182
Ben.mcinnis@bencocre.com

Denise Razzeto
503-208-8183
Denise.razzeto@bencocre.com





Sample Plan



CONTACT

Benjamin S McInnis
503-208-8182
Ben.mcinnis@bencocre.com

Denise Razzeto
503-208-8183
Denise.razzeto@bencocre.com



www.bencocre.com

1750 SW Harbor Way, Suite 250 Portland, OR 97201

This statement with the information it contains is given with the understanding that all negotiations relating to the purchase, renting, or leasing of the property described above shall be conducted through Benco Commercial Real Estate, LLC. The above information, while not guaranteed, has been secured from sources we believe to be reliable.