

OFFICE PROPERTY FOR LEASE

End-Unit Office Space with Schoolcraft Road Frontage

37463 SCHOOLCRAFT RD
LIVONIA, MI 48150



- › 2,400 sf available for Lease
- › Flexible lease terms
- › Great freeway access
- › Signage Available



P.A. COMMERCIAL
Corporate & Investment Real Estate

**OFFERING SUMMARY**

Available SF: 2,400 SF

Lease Rate: \$13.95 SF/yr (MG)

Lot Size: 1.25 Acres

Year Built: 1978

Building Size: 12,180 SF

Zoning: M-1, Livonia

PROPERTY OVERVIEW

I-96 service drive signage available. Freeway visibility.

PROPERTY HIGHLIGHTS

- 2,400 sf available for Lease
- Flexible lease terms
- Great freeway access
- Signage Available

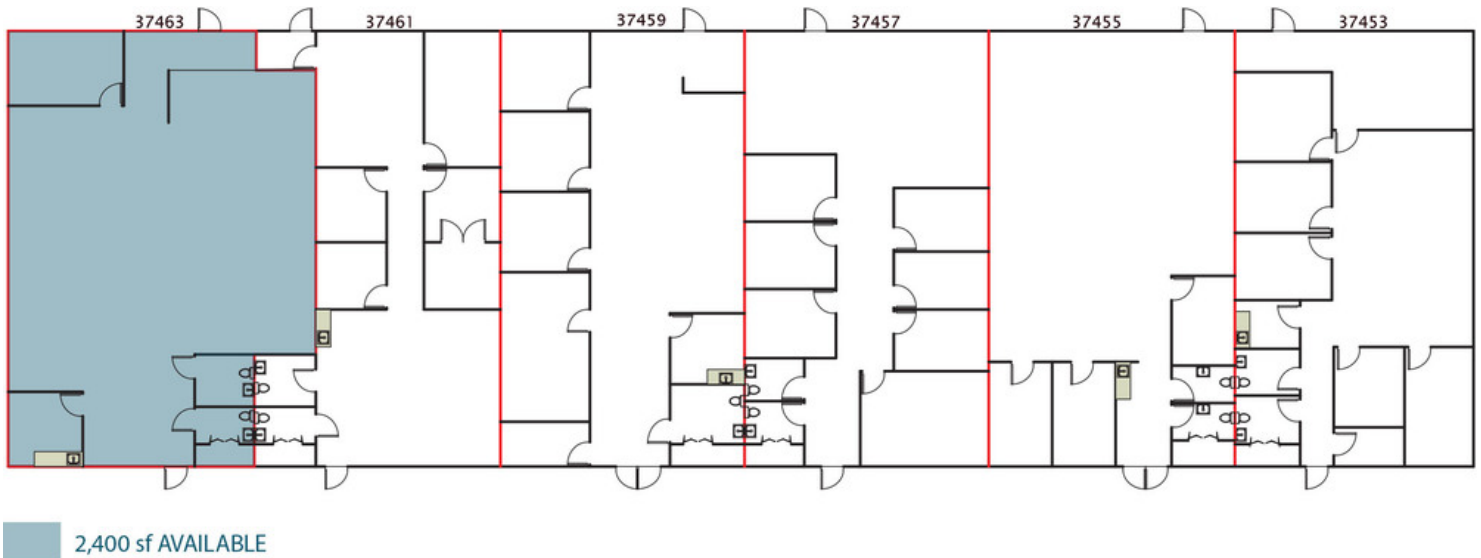
DAVID A. PLUMLEY Managing Member/CFO
dave@pacommercial.com (P) 248.358.0100 (C) 248.281.9901

MATTHEW J. SCHIFFMAN Senior Associate
matt@pacommercial.com (P) 248.281.9907 (C) 248.943.6449

 **P.A. COMMERCIAL**
Corporate & Investment Real Estate

26555 Evergreen Road, Suite 1500 • Southfield, MI 48076

We obtained the information above from sources we believe to be reliable. However, we have not verified its accuracy and make no guarantee, warranty or representation about it. It is submitted subject to the possibility of errors, omissions, change of price, rental or other conditions, prior sale, lease or financing, or withdrawal without notice. We include projections, opinions, assumptions or estimates for example only, and they may not represent current or future performance of the property. You and your tax and legal advisors should conduct your own investigation of the property and transaction.

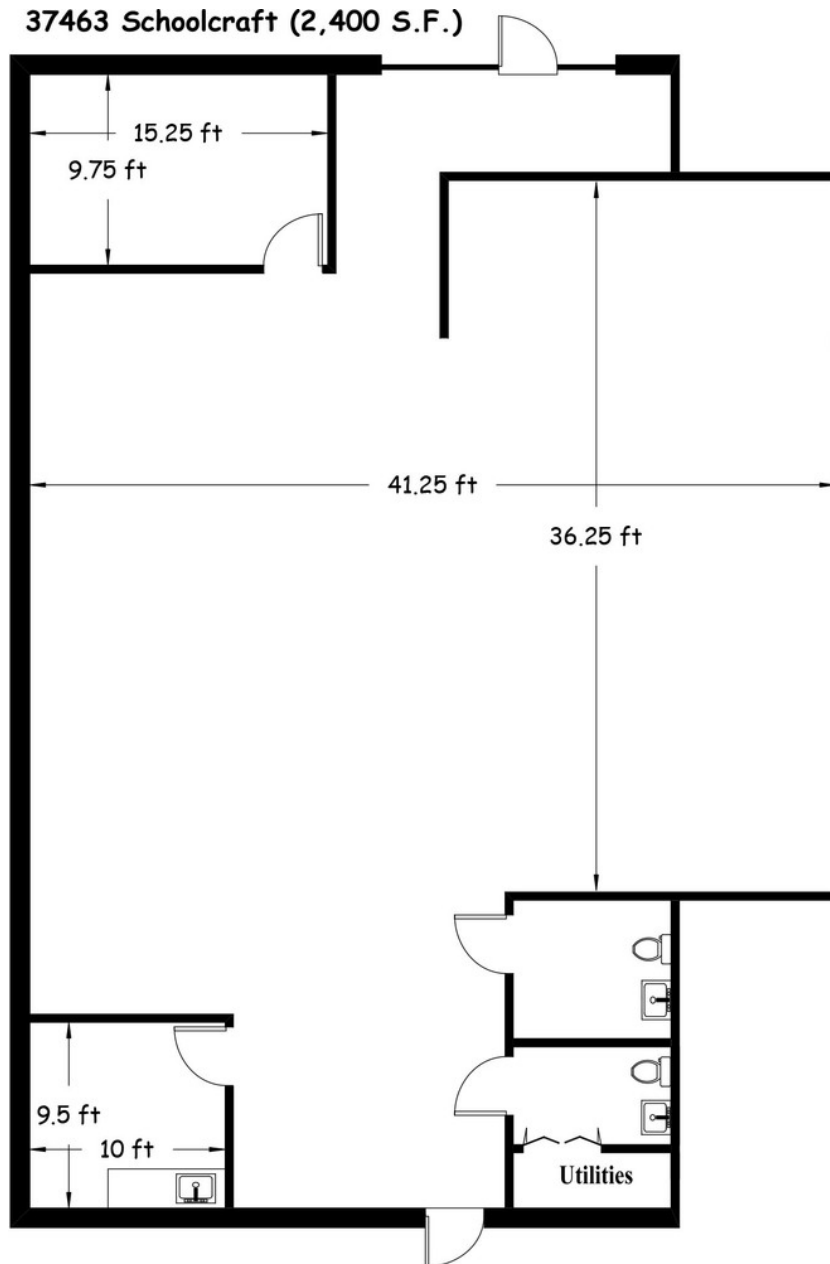


DAVID A. PLUMLEY Managing Member/CFO
dave@pacommercial.com (P) 248.358.0100 (C) 248.281.9901

MATTHEW J. SCHIFFMAN Senior Associate
matt@pacommercial.com (P) 248.281.9907 (C) 248.943.6449



26555 Evergreen Road, Suite 1500 • Southfield, MI 48076



DAVID A. PLUMLEY Managing Member/CFO
dave@pacommercial.com (P) 248.358.0100 (C) 248.281.9901

MATTHEW J. SCHIFFMAN Senior Associate
matt@pacommercial.com (P) 248.281.9907 (C) 248.943.6449



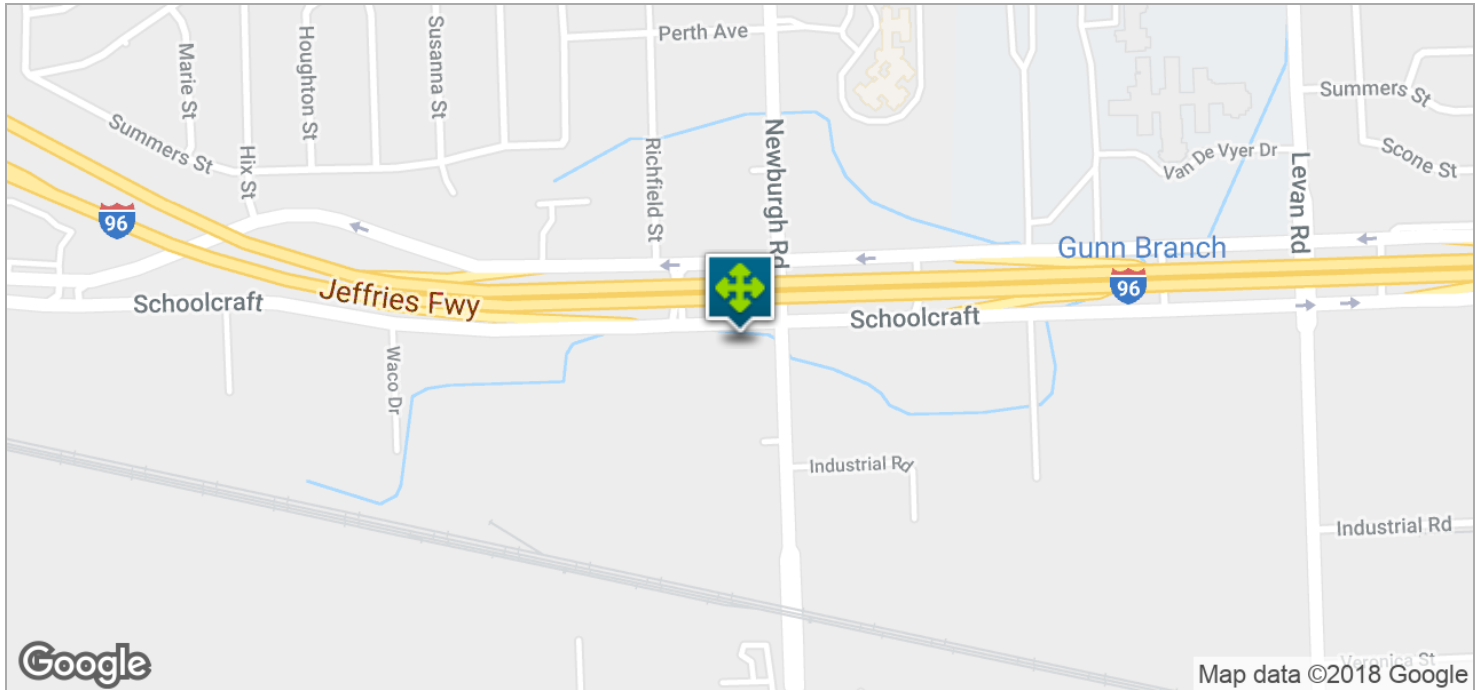
P.A. COMMERCIAL
Corporate & Investment Real Estate

26555 Evergreen Road, Suite 1500 • Southfield, MI 48076

We obtained the information above from sources we believe to be reliable. However, we have not verified its accuracy and make no guarantee, warranty or representation about it. It is submitted subject to the possibility of errors, omissions, change of price, rental or other conditions, prior sale, lease or financing, or withdrawal without notice. We include projections, opinions, assumptions or estimates for example only, and they may not represent current or future performance of the property. You and your tax and legal advisors should conduct your own investigation of the property and transaction.

37463 SCHOOLCRAFT RD, LIVONIA, MI

// LOCATION MAPS



DAVID A. PLUMLEY Managing Member/CFO
 dave@pacommercial.com (P) 248.358.0100 (C) 248.281.9901

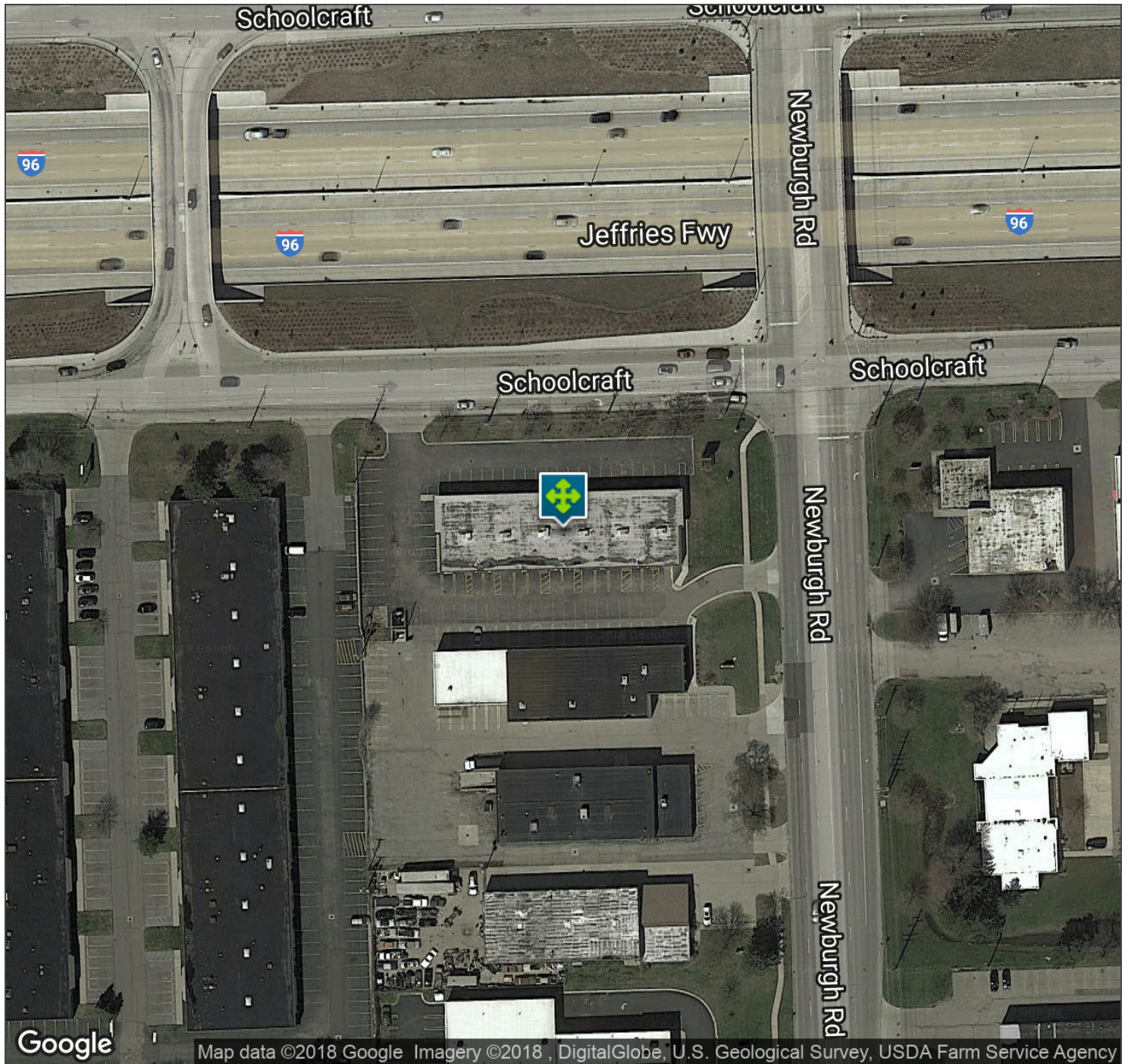
MATTHEW J. SCHIFFMAN Senior Associate
 matt@pacommercial.com (P) 248.281.9907 (C) 248.943.6449



P.A. COMMERCIAL
 Corporate & Investment Real Estate

26555 Evergreen Road, Suite 1500 • Southfield, MI 48076

We obtained the information above from sources we believe to be reliable. However, we have not verified its accuracy and make no guarantee, warranty or representation about it. It is submitted subject to the possibility of errors, omissions, change of price, rental or other conditions, prior sale, lease or financing, or withdrawal without notice. We include projections, opinions, assumptions or estimates for example only, and they may not represent current or future performance of the property. You and your tax and legal advisors should conduct your own investigation of the property and transaction.



DAVID A. PLUMLEY Managing Member/CFO
dave@pacommercial.com (P) 248.358.0100 (C) 248.281.9901

MATTHEW J. SCHIFFMAN Senior Associate
matt@pacommercial.com (P) 248.281.9907 (C) 248.943.6449



P.A. COMMERCIAL
Corporate & Investment Real Estate

26555 Evergreen Road, Suite 1500 • Southfield, MI 48076

We obtained the information above from sources we believe to be reliable. However, we have not verified its accuracy and make no guarantee, warranty or representation about it. It is submitted subject to the possibility of errors, omissions, change of price, rental or other conditions, prior sale, lease or financing, or withdrawal without notice. We include projections, opinions, assumptions or estimates for example only, and they may not represent current or future performance of the property. You and your tax and legal advisors should conduct your own investigation of the property and transaction.

**CORPORATE &
INVESTMENT
REAL ESTATE**

26555 Evergreen, Suite 1500

Southfield, MI 48076

MAIN: 248.358.0100

pacommercial.com