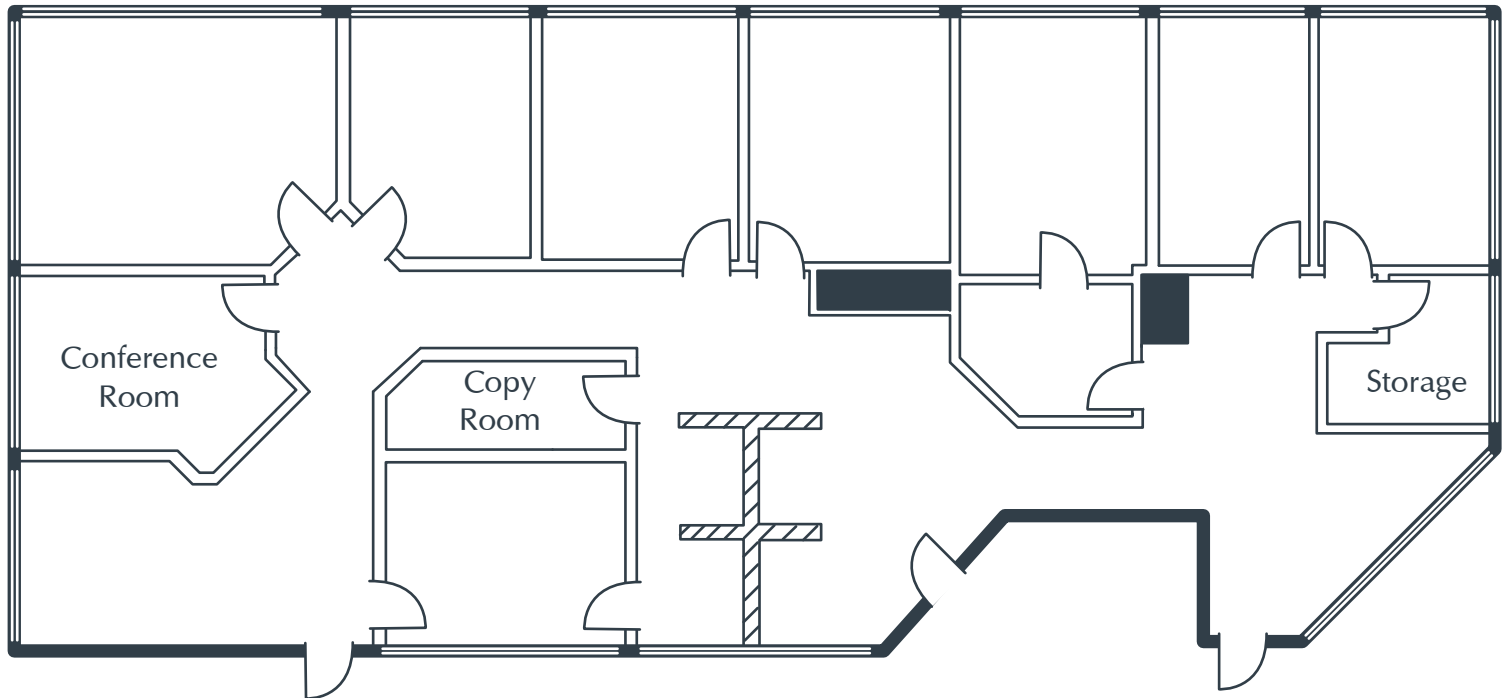


MITCHELL CORPORATE CENTER
17752 Mitchell, Suite D
Irvine, CA

3,720 Square Feet
\$1.90 RSF/MO
Full Service Gross



Notes:

- Reception
- 8 Window Offices
- Conference Room
- Copy Room
- Storage Room
- Open Work Area
- Part of a Professionally Managed Business Park

CONTACT INFORMATION:

All rates, terms, floor plans and building facts subject to change without notice.

ec 6.28.16

Laura Preston-Fayerman/Senior Leasing Director
Phone: 949.719.7205
Mobile: 949.274.3424
E-mail: lfayerman@olenproperties.com

Olen Properties Corp.
Seven Corporate Plaza
Newport Beach, CA 92660
949.644.OLEN
www.olenproperties.com

