

GREENWICH  
VILLAGE

NEW YORK  
NY

# 99 UNIVERSITY PLACE

RKF



# SPACE DETAILS

## LOCATION

Southeast corner of East 12th Street

## SPACE

Ground Floor	2,709 SF
Basement	1,338 SF
Total	4,047 SF

## POSSESSION

Immediate

## TERM

Through September 2020

## FRONTAGE

35 FT on University Place  
65 FT on East 12th Street

## SITE STATUS

Formerly Denim & Supply

## NEIGHBORS

Sweetgreen, Roast, European Wax Center, The Grey Dog Cafe, Argo Tea, Agata & Valentina and Blue Bottle Coffee

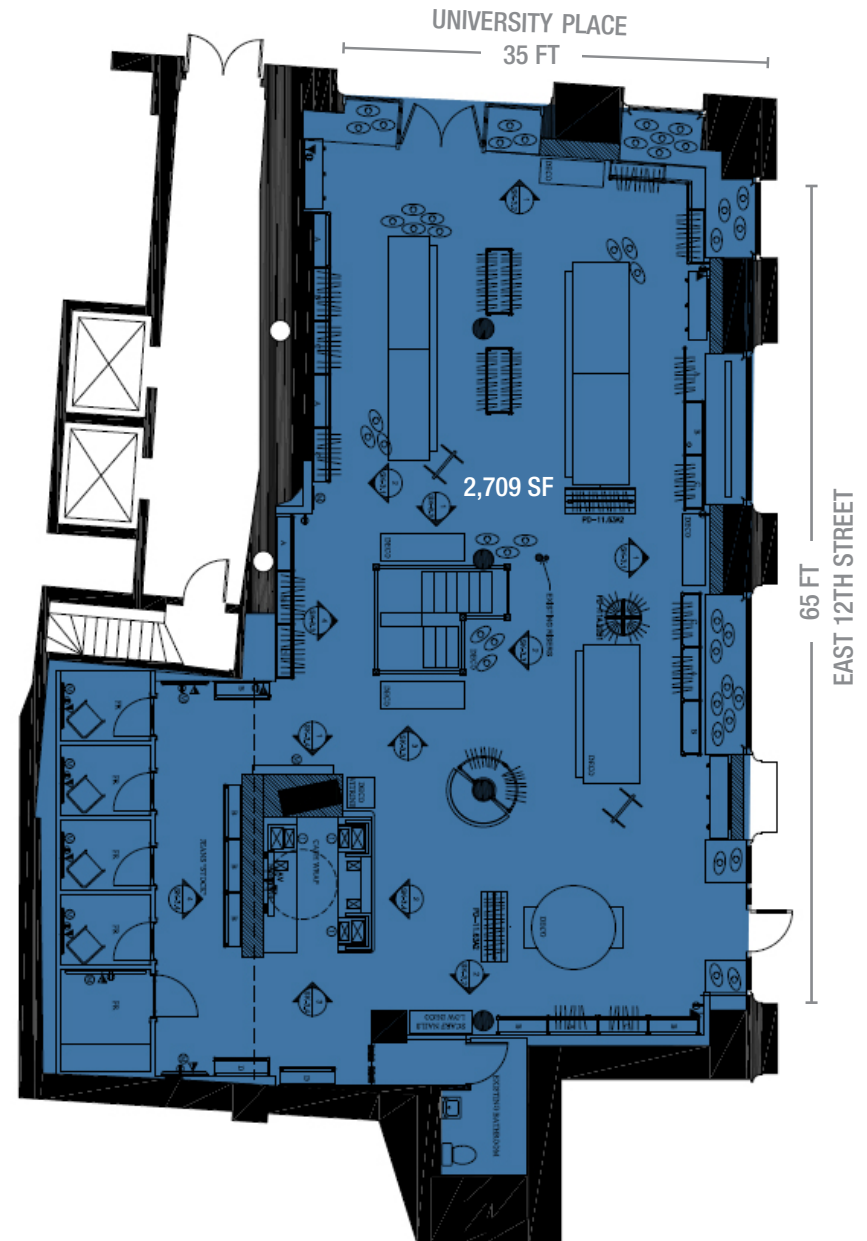
## COMMENTS

This space is being offered for sublease by Ralph Lauren Corporation

Located across the street from Billy Macklowe's 52-unit retail and residential development at 21 East 12th Street

Dry uses preferred

## GROUND FLOOR



# AREA RETAIL



99  
**UNIVERSITY**  
PLACE  
NEW YORK NY

## CONTACT EXCLUSIVE AGENTS

**ROBERT COHEN**  
212.331.0117  
rcohen@rkf.com

**PETER WHITENACK**  
212.331.0128  
pwhitenack@rkf.com



**521 FIFTH AVENUE  
FLOOR 7  
NEW YORK, NY 10175**

212.599.3700  
INFO@RKf.COM  
RKf.COM

© 2016 ROBERT K. FUTTERMAN & ASSOCIATES, LLC All information is from sources believed reliable, not independently verified, and thus subject to errors, omissions, and modifications such as price, listing, square footage, rates and commissions. All information, estimates and projections subject to change, market assumptions, unknown facts and conditions, and future potentialities. RKf makes no express or implied representations or warranties, as facts and results may vary materially from all information, estimates and projections.

All renderings presented are conceptual.

COMING SOON