



## THOMPSON CENTER WATERS

5481 West Waters Avenue | Tampa, FL

Thompson Center Waters is an *attractive* business park *conveniently located* north of Tampa International Airport, with *easy access* to the Veteran's Expressway, Pinellas County, & Pasco County.

### Property Highlights

<b>Available Space:</b>	9,616 SF
<b>Parking:</b>	3/1,000 SF
<b>Ceiling Height:</b>	9'
<b>Comments:</b>	Wiring in place

- > The area offers a variety of amenities including hotels, restaurants, shopping and banking within a few minutes drive.
- > Pleasant tree-scaped environment with good visibility to Waters Ave., Anderson Rd., and Florida Mining Blvd.
- > Day care on site
- > Property management on site
- > Egress to Anderson Rd. from TCW Office Park
- > Frontier FIOS & Spectrum Available
- > Tenants: Home Depot, BayCare, Hayward Baker, Terracon Engineers

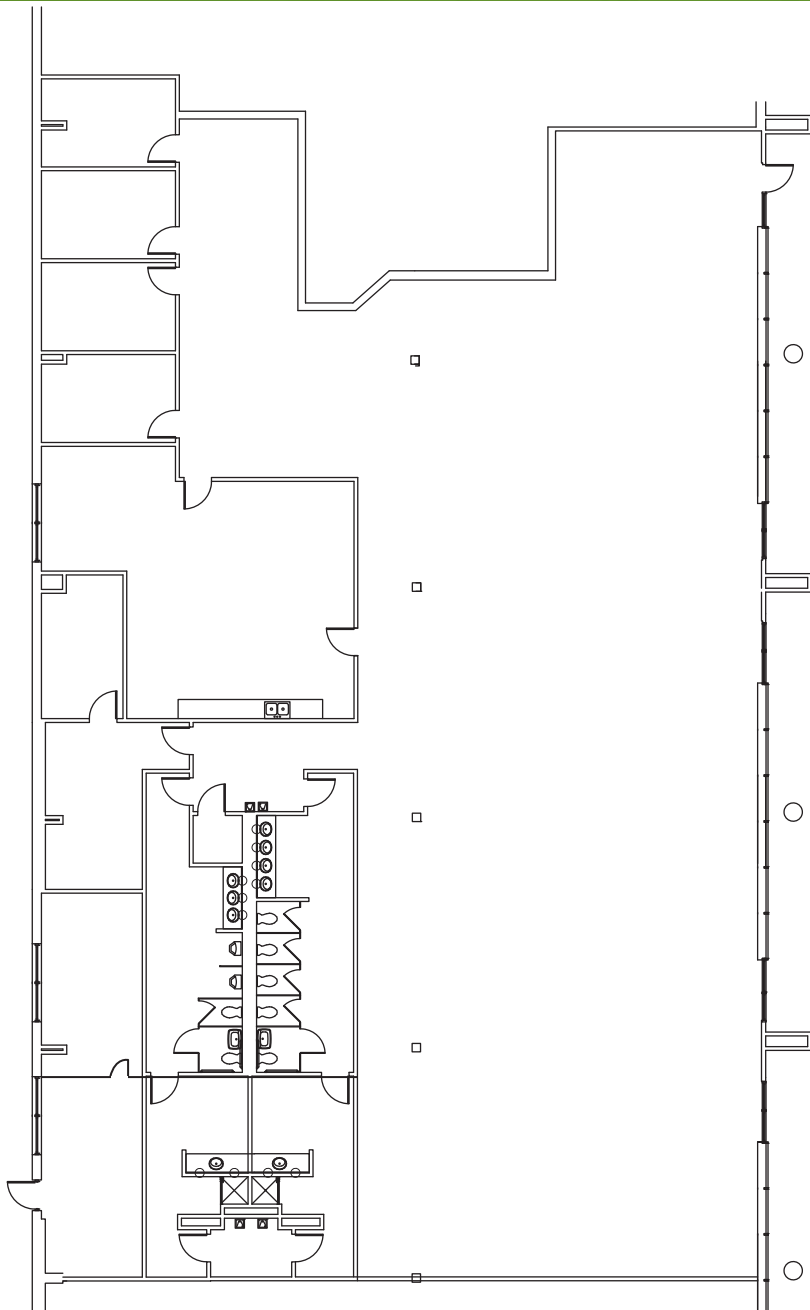




# THOMPSON CENTER WATERS

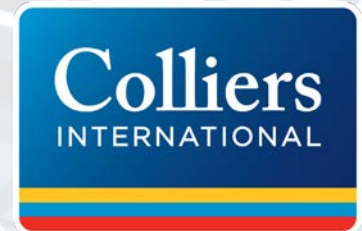
5481 West Waters Avenue | Tampa, FL

## Floor Plan



## Broker Contact:

MARY CLARE CODD, SIOR  
maryclare.codd@colliers.com  
(813) 221-2290



<http://www.colliers.com/maryclare.codd>

## Owner Contact:

FIRST INDUSTRIAL REALTY TRUST, INC.  
5455 W Waters , Suite 211  
Tampa, Florida 33634  
Direct: (813) 884-6161



[www.firstindustrial.com](http://www.firstindustrial.com)

## OWNERSHIP PLATFORM & CAPABILITIES

*First Industrial RealtyTrust, Inc.*

**20+**  
years of  
experience

**\$4.0 billion**  
total capitalization  
NYSE listed

**65 million**  
SF managed &  
under development

**590**  
number of properties in  
top industrial markets

All information furnished regarding the property for sale, rental or financing is obtained from sources deemed reliable. No representation is made to the accuracy thereof and is submitted subject to errors, omissions, change of price rental or other conditions, prior sale, lease, or financing, or withdrawal without notice. First Industrial Realty Trust, Inc. represents the Seller in this transaction and as such owes all duties and obligations thereto.