

FOR LEASE

RED MILL COMMONS

UPTON DR. & NIMMO PKWY. VIRGINIA BEACH, VIRGINIA

- The largest outdoor shopping center in Virginia Beach
- Anchored by Wal-Mart, Home Depot and Target
- 1,600-4,800 square feet available



VENTURE
REALTY GROUP

CONTACT:
Venture Realty Group
757.491.1990

1081 19th Street, Suite 203 - Virginia Beach, VA 23451 - p: 757-491-1990 - f: 757-491-7588
www.venturerealtygroup.com

FOR LEASE

RED MILL COMMONS

UPTON DR. & NIMMO PKWY. VIRGINIA BEACH, VIRGINIA



1081 19th Street, Suite 203 - Virginia Beach, VA 23451 - p: 757-491-1990 - f: 757-491-7588
www.venturerealtygroup.com

FOR LEASE

RED MILL COMMONS

UPTON DR. & NIMMO PKWY. VIRGINIA BEACH, VIRGINIA

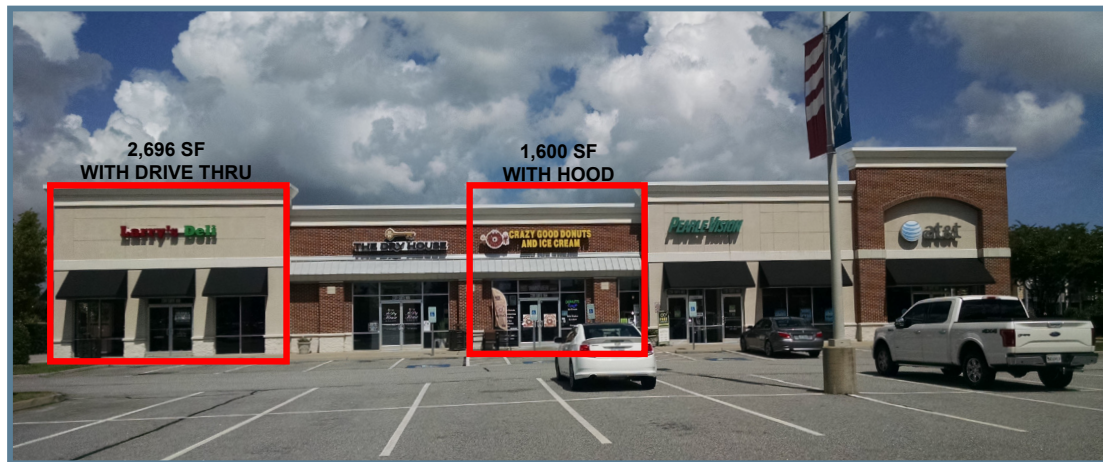


4,800 SF FORMER OLYMPIA SPORTS

FOR LEASE

RED MILL COMMONS

UPTON DR. & NIMMO PKWY. VIRGINIA BEACH, VIRGINIA



DRIVE THRU IN PLACE AT FORMER LARRY'S DELI - 2,696 SF

FOR LEASE

RED MILL COMMONS

UPTON DR. & NIMMO PKWY. VIRGINIA BEACH, VIRGINIA



PROPERTY DESCRIPTION:

Red Mill Commons & Walk is the most comprehensive shopping destination in southern Virginia Beach, serving all of southern Virginia Beach's shopping and lifestyle needs. This regional power center serves an affluent trade area of over 120,000 people.

National tenants include: Wal-Mart, Home Depot, Target, TJ Maxx, Michaels, Dollar Tree, Office Max, Homegoods, Buffalo Wild Wings, Panera Bread, Chipotle, ABC, Leslies Pool, Pearle Vision, AT&T, Walgreens, Outback Steakhouse, Wendy's, Bank of America, Chilis, Sonic, Petco, Starbucks and more.

Local tenants include: Blue Seafood, Back Bay Gourmet, Lola Boutique, Fat Frogs Bike & Fitness, Coastal Edge, Hooray, Super Cleaners, Masala Bites, La Bella Italia, Rigoletto Italian Bakery, Tapped Gastropub, Dry House, 17th Street Surf Shop, Once Upon a Child, Primo Pizza, ATA Karate and more.

Red Mill is conveniently located east of the intersection of General Booth Boulevard and Nimmo Parkway. The centers enjoy over 20 access points from Princess Anne Road, Upton Drive, Nimmo Parkway, Elson Green Avenue and Sandbridge Road.

Local landlord, property management, and leasing team with attention to detail. Well maintained property with onsite maintenance tech. Dedicated marketing team planning regular community events, managing active social media (over 13,000 followers on Instagram and Facebook), and advertising via tv, print, and radio.



AVAILABILITY:

- 1,600-4,800 square feet available

PRICING:

- \$24.00 per square foot

TRAFFIC COUNTS:

- 33,250 cars daily on General Booth Boulevard from London Bridge Road to Nimmo Parkway

RADIUS DEMOGRAPHICS:

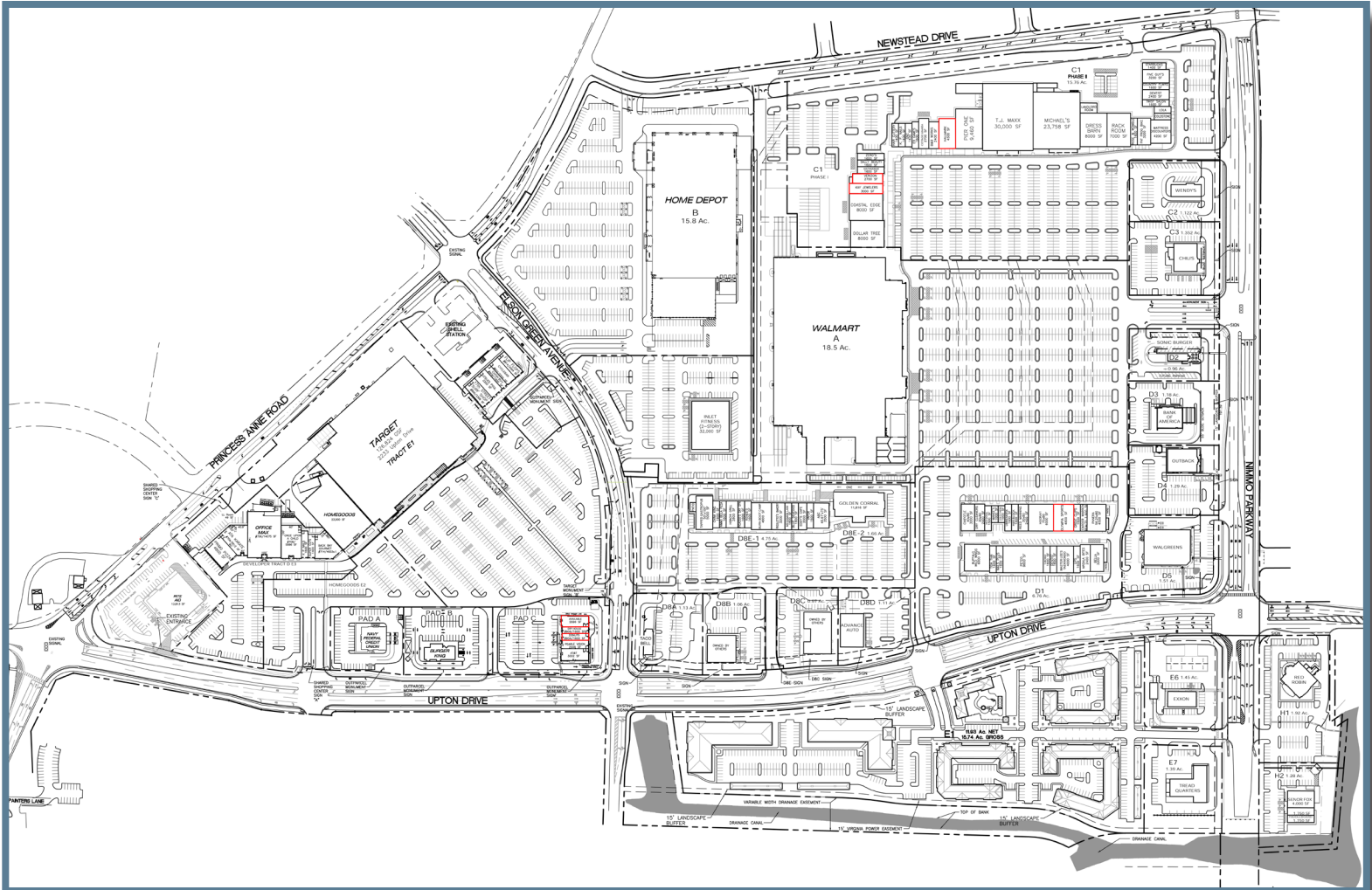
	1 mi.	3 mi.	5mi.
Pop	11,035	43,803	74,978
Avg HH \$	\$104,766	\$94,404	\$96,341

FOR LEASE

RED MILL COMMONS

UPTON DR. & NIMMO PKWY. VIRGINIA BEACH, VIRGINIA

1 MILLION SQUARE FEET OF RETAIL



VENTURE
REALTY GROUP

CONTACT:
Venture Realty Group
757.491.1990

1081 19th Street, Suite 203 - Virginia Beach, VA 23451 - p: 757-491-1990 - f: 757-491-7588
www.venturerealtygroup.com