

OFFICE SUITES FOR LEASE

NORTHRIDGE FINANCIAL PLAZA

9003 Reseda Blvd, Northridge



FEATURES

- Free Parking in Attached Lot
- Landscaped Courtyard
- Building Signage Available

AVAILABLE

Suite	Size	Rate	Type
103	1,649 SF	\$1.95 PSF	FSG - Utilities Included
201	1,426 SF	\$1.95 PSF	FSG - Utilities Included
209	964 SF	\$1.95 PSF	FSG - Utilities Included

Tenant pays for janitorial. Rent increases 3% annually.



***\$1.50 PRSF Promotional Rate applies to the first 3 mos. of a minimum 3-year term only.**

For more information please contact:



Lee & Associates® - LA NorthVentura, Inc. • Corporate ID #01191898
A Member of the Lee & Associates® Group of Companies
15250 Ventura Blvd., Suite 100 • Sherman Oaks, CA 91403
P: 818.986.9800 F: 818.933.0405 • www.lee-associates.com

No warranty or representation is made to the accuracy of the foregoing information. Terms of sale or lease and availability are subject to change or withdrawal without notice.

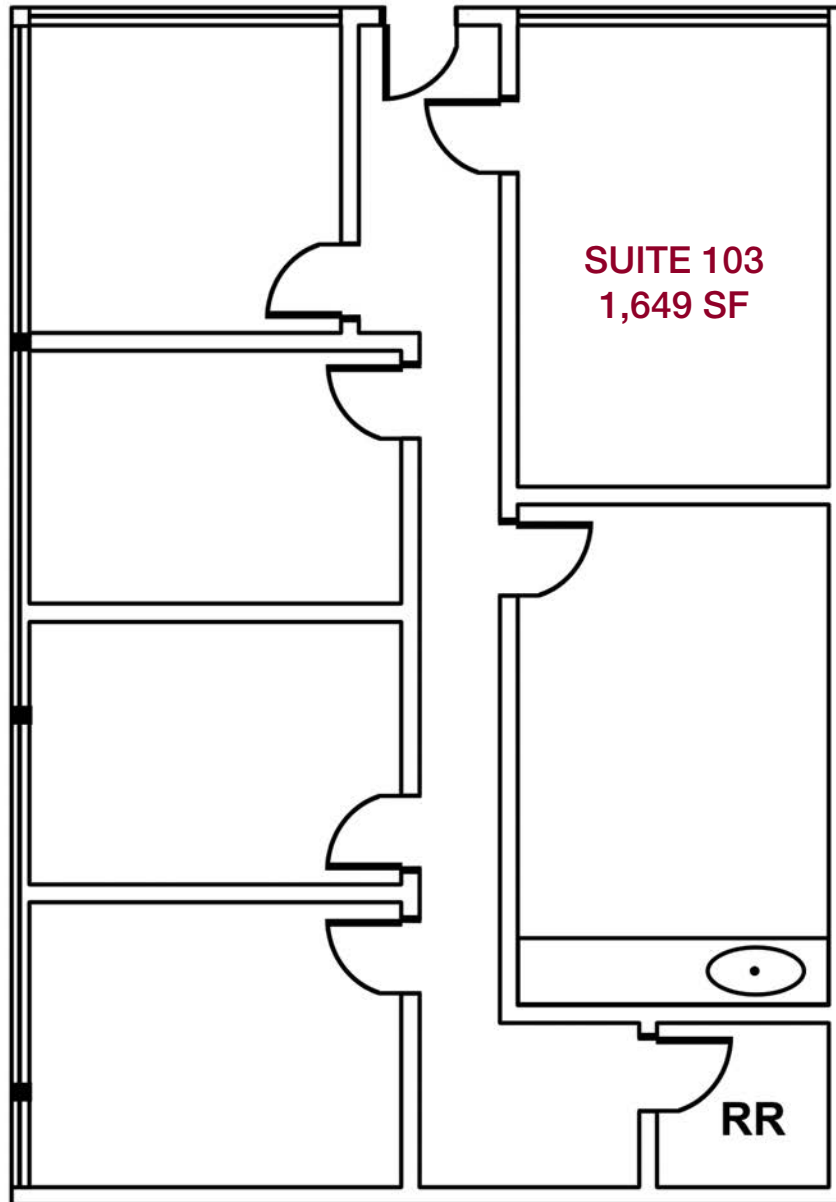
Scott Romick
Principal
818.933.0305
sromick@lee-re.com
BRE# 01323527

Scott Silverstein
Principal
818.223.4391
ssilverstein@lee-re.com
BRE# 00877034

OFFICE SUITES FOR LEASE

NORTHRIDGE FINANCIAL PLAZA

9003 Reseda Blvd, Northridge



NOT TO SCALE

For more information please contact:



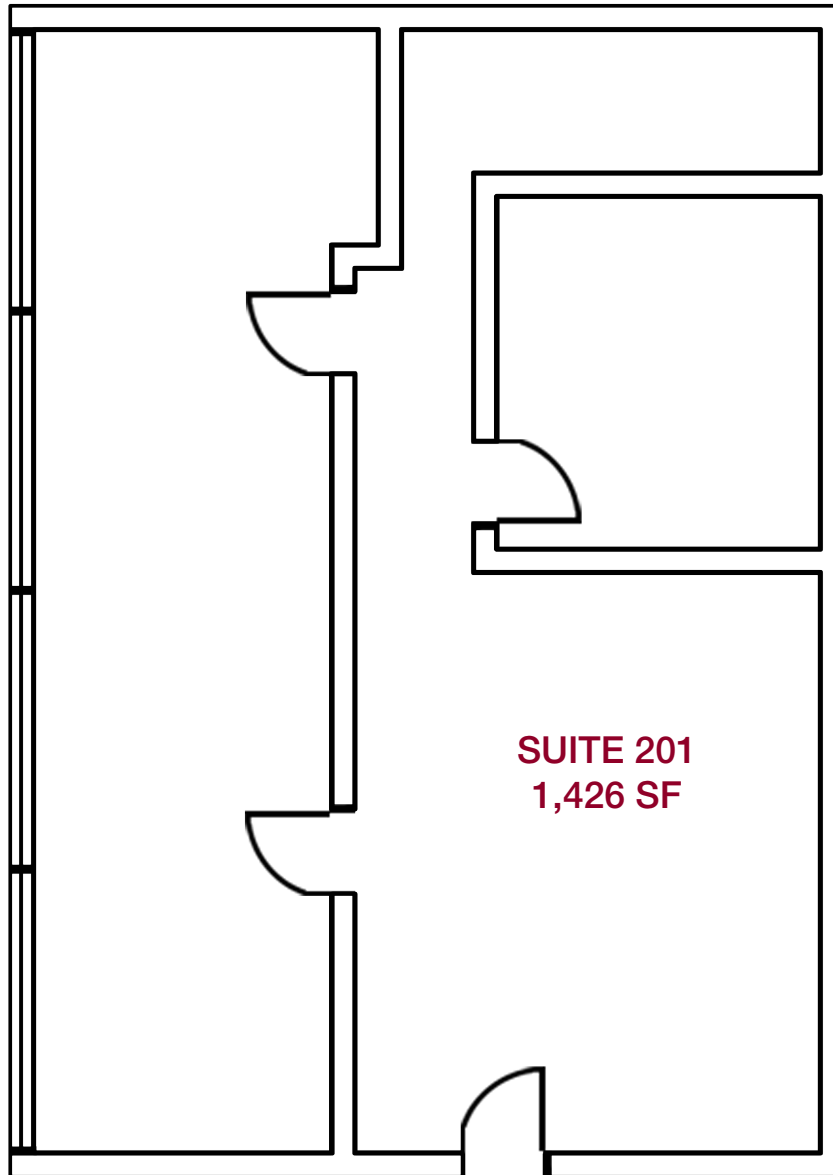
Lee & Associates® - LA NorthVentura, Inc. • Corporate ID #01191898
A Member of the Lee & Associates® Group of Companies
15250 Ventura Blvd., Suite 100 • Sherman Oaks, CA 91403
P: 818.986.9800 F: 818.933.0405 • www.lee-associates.com

No warranty or representation is made to the accuracy of the foregoing information. Terms of sale or lease and availability are subject to change or withdrawal without notice.

Scott Romick
Principal
818.933.0305
sromick@lee-re.com
BRE# 01323527

Scott Silverstein
Principal
818.223.4391
ssilverstein@lee-re.com
BRE# 00877034

OFFICE SUITES FOR LEASE
NORTHRIDGE FINANCIAL PLAZA
9003 Reseda Blvd, Northridge



NOT TO SCALE

For more information please contact:



Lee & Associates® - LA NorthVentura, Inc. • Corporate ID #01191898
A Member of the Lee & Associates® Group of Companies
15250 Ventura Blvd., Suite 100 • Sherman Oaks, CA 91403
P: 818.986.9800 F: 818.933.0405 • www.lee-associates.com

No warranty or representation is made to the accuracy of the foregoing information. Terms of sale or lease and availability are subject to change or withdrawal without notice.

Scott Romick
Principal
818.933.0305
sromick@lee-re.com
BRE# 01323527

Scott Silverstein
Principal
818.223.4391
ssilverstein@lee-re.com
BRE# 00877034

OFFICE SUITES FOR LEASE

NORTHRIDGE FINANCIAL PLAZA

9003 Reseda Blvd, Northridge



For more information please contact:



Lee & Associates® - LA NorthVentura, Inc. • Corporate ID #01191898
A Member of the Lee & Associates® Group of Companies
15250 Ventura Blvd., Suite 100 • Sherman Oaks, CA 91403
P: 818.986.9800 F: 818.933.0405 • www.lee-associates.com

No warranty or representation is made to the accuracy of the foregoing information. Terms of sale or lease and availability are subject to change or withdrawal without notice.

Scott Romick
Principal
818.933.0305
sromick@lee-re.com
BRE# 01323527

Scott Silverstein
Principal
818.223.4391
ssilverstein@lee-re.com
BRE# 00877034