



# 6332 MIDLOTHIAN TPK

**RETAIL FOR LEASE**



## PROPERTY DESCRIPTION

- 3,500 sf available
- \$12.00 psf
- Excellent parking and storage
- Retail shop space
- Great take-out restaurant location
- Located at the intersection of Warwick Road and Midlothian Turnpike near Chippenham Parkway in the City of Richmond
- 45,000 VPD

## DEMOGRAPHICS

	1 Mile	3 Miles	5 Miles
Population	10,686	73,651	196,617
Av. HH Income	\$44,523	\$55,070	\$65,019



FOR FURTHER INFORMATION, PLEASE CONTACT:

John Madures  
804-643-4700 x 118  
jmadures@divaris.com

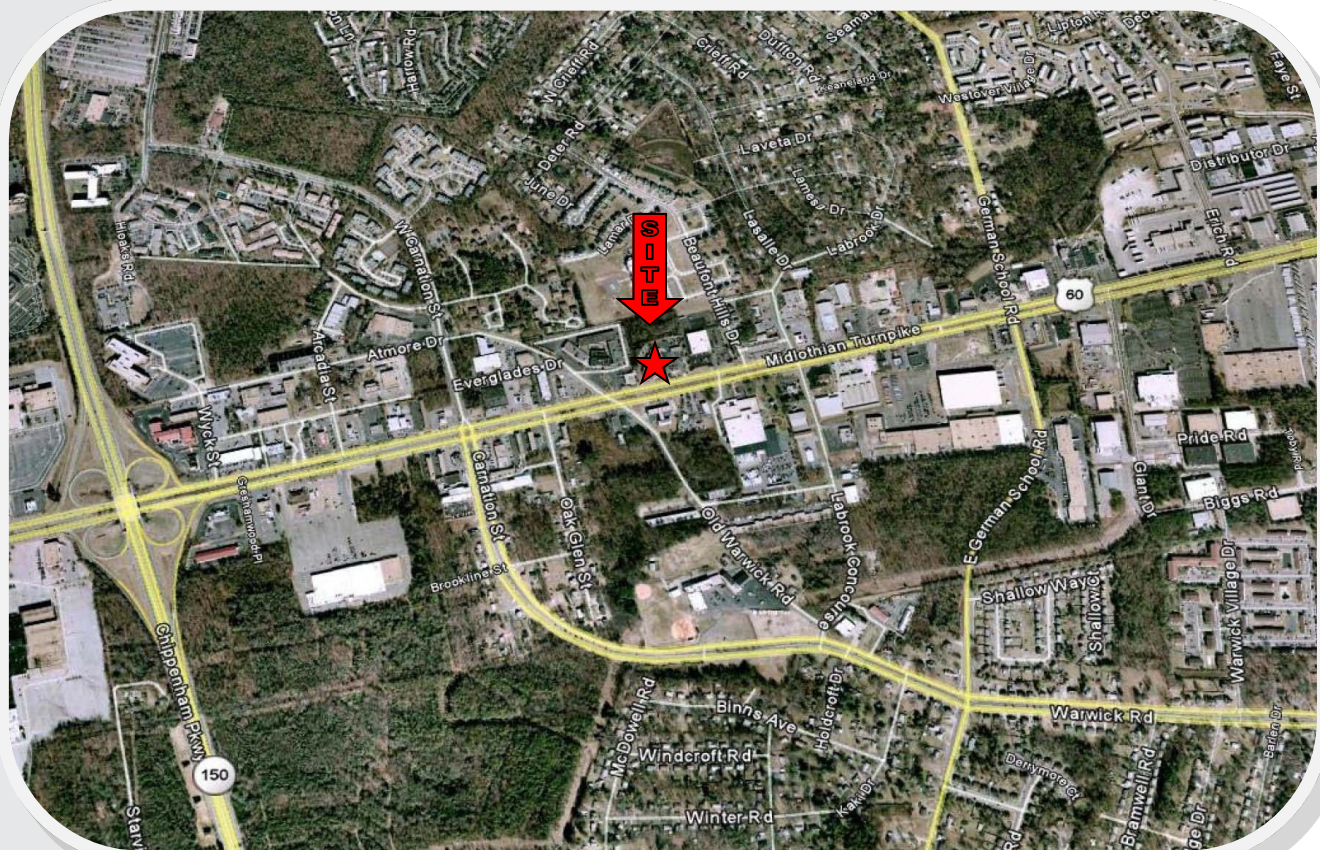
**divaris**  
REAL ESTATE, INC.





# 6332 MIDLOTHIAN TPK

**RETAIL FOR LEASE**



Although every effort has been made to ensure accuracy, no liability will be accepted for errors or omissions



200 SOUTH 10TH STREET | SUITE 1010 | RICHMOND VA 23219 | PHONE: 804.643.4700 | FAX: 804.643.4770 | [www.divaris.com](http://www.divaris.com)