

FABULOUS OFFICE SUITES EXCELLENT WESTPORT LOCATION



965 Post Road East, Westport, Connecticut

- Spacious 1,750sf second floor suite with 3 offices, reception area, conference room, kitchenette, and private restroom.
- Asking rent: \$3,700/month plus utilities.
- Space can be divided.
- Available for immediate occupancy.
- Conveniently located on the Post Road close to I-95 and Metro-North as well as banks, restaurants, and retailers.

Must see to believe the impressive quality of this suite!

Contact Exclusive Agents

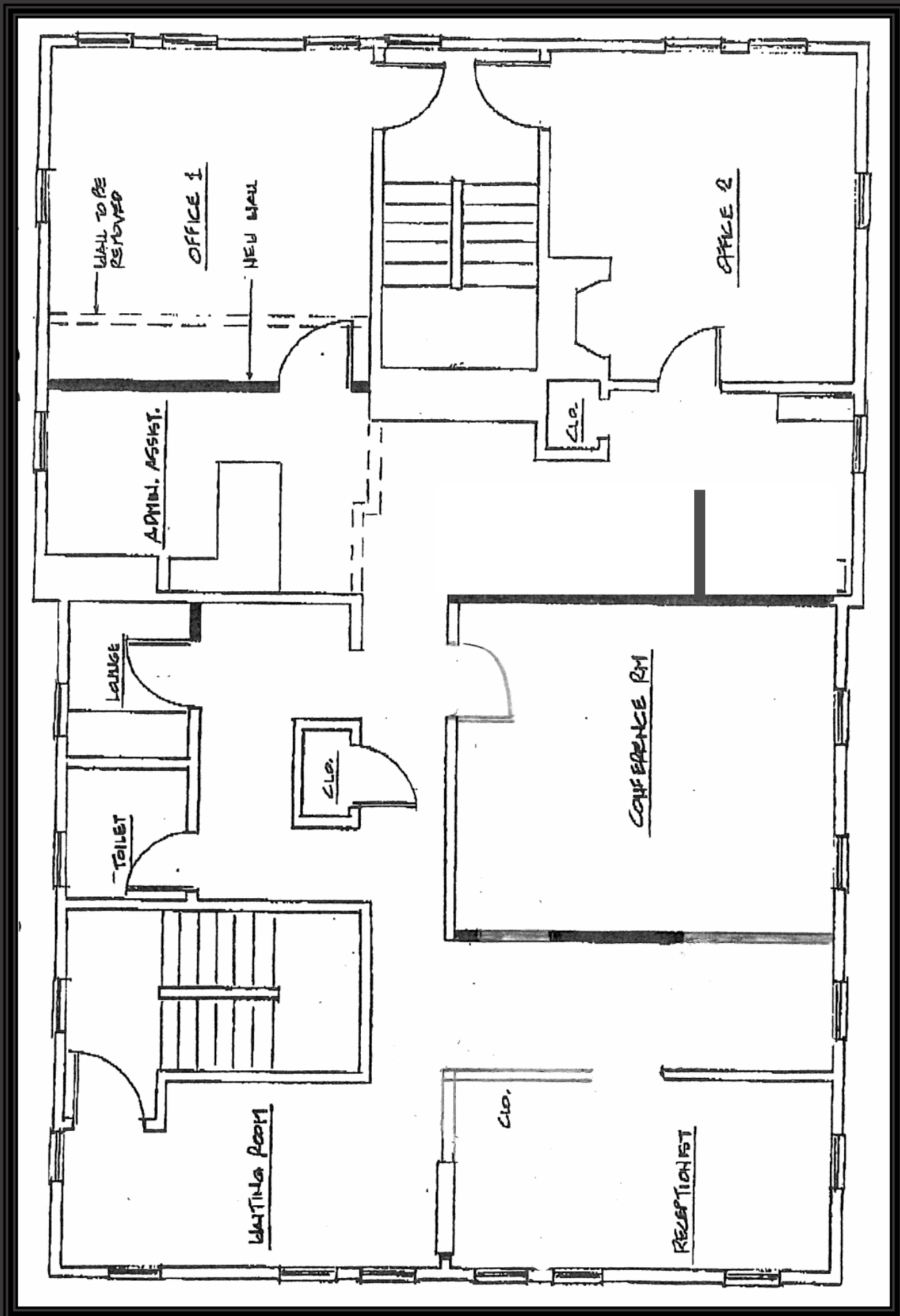
Dale Thomas
(203)913-4345

dthomas@johndhastings.com

Mark Holod
(203)856-3893

mholod@johndhastings.com

SECOND FLOOR OFFICE SUITE'S CURRENT LAYOUT



FULL SECOND FLOOR OFFICE SUITE



FIRST FLOOR SINGLE OFFICE SUITE- THIS SPACE HAS BEEN LEASED



BUILDING'S REARVIEW & PARKING AREA



AERIAL VIEWS

