

Lake Merritt Plaza

1956 Webster Street
Oakland, CA 94612



LAKE MERRITT
PLAZA

1956

UPTOWN
DOWNTOWN

AVISON
YOUNG



CLARION PARTNERS

Available Space



Suite 100 - 6,237 rsf

Open ground floor space available for professional services or retail

Suite 190 - 1,825 rsf

Ground floor shop/engineering space

Available May 1, 2018

Suite 400 - 7,244 rsf

Double door entry with 16+ private offices, one conference room, kitchen, server room

Available May 1, 2018

Property Overview

Neighboring the main 27-story office tower, the smaller Lake Merritt Plaza tech building provides for creative industrial style office space in the heart of Uptown.

The smaller 5-story building is part of the greater Lake Merritt Plaza complex, providing class A services and on-site amenities and property management.

Highlights

- Creative use
- Exposed concrete ceilings and traditional space
- Newly-renovated lobby and exterior
- Adjacent to 19th street uptown BART station
- New retail renovation underway to include lockers & showers, secure bike parking & repair station, expanded outside seating areas and new food services

Building Photos

AVAILABLE SPACE

BUILDING PHOTOS

NEIGHBORS & AMENITIES

FLOOR PLAN



Facade

Aerial



1956
Webster St.

Building Photos

AVAILABLE SPACE

BUILDING PHOTOS

NEIGHBORS & AMENITIES

FLOOR PLAN

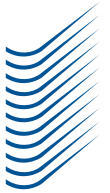
LAKE MERRITT
PLAZA

Facade

Aerial

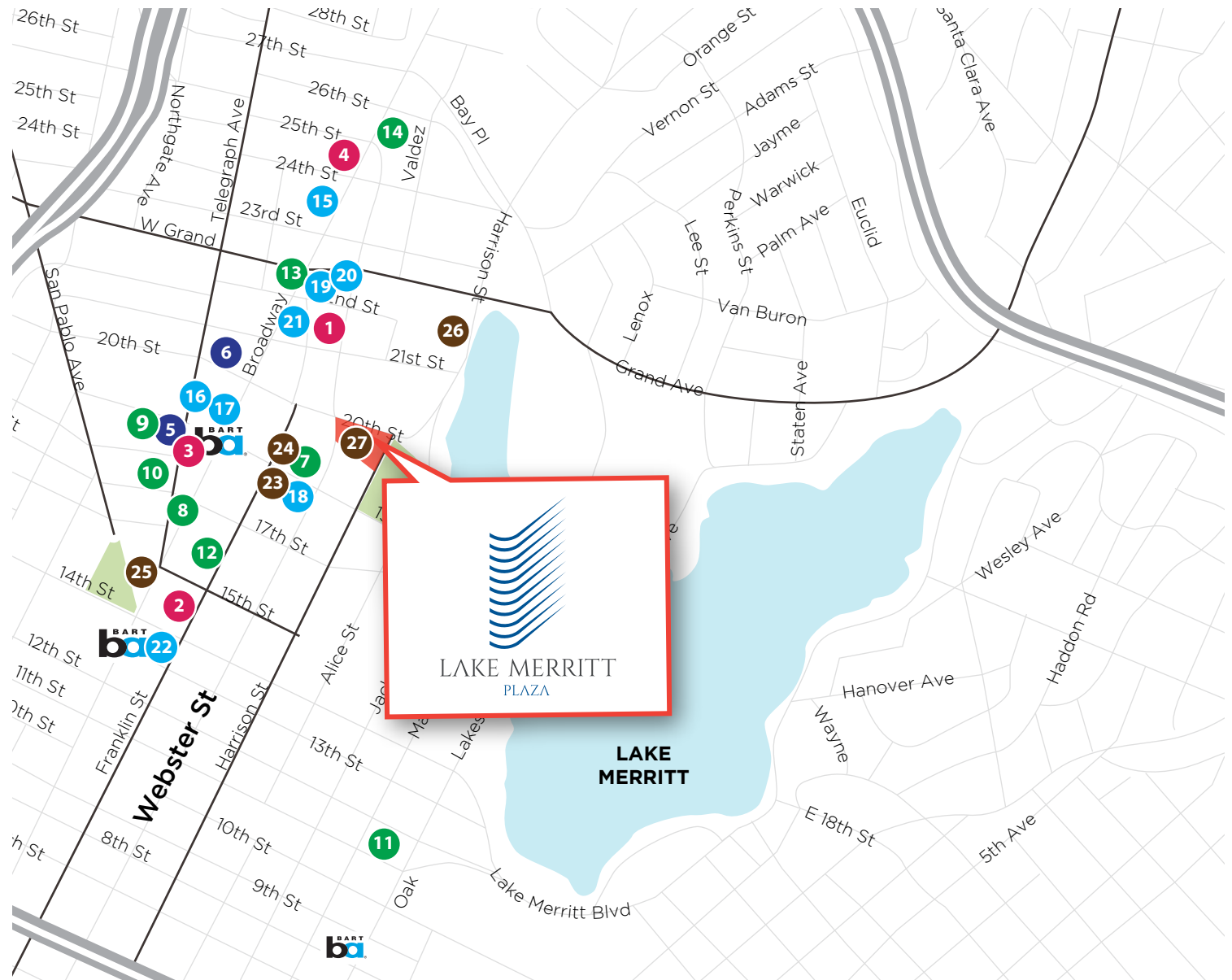


Neighbors & Amenities



LAKE MERRITT
PLAZA

- Notable Neighbors**
- 1 Pandora
- 2 Fluid
- 3 Uber
- 4 The Hive
- Uptown Icons & Entertainment**
- 5 Fox Theater
- 6 Paramount Theater
- Bars**
- 7 Drexl
- 8 Dogwood
- 9 Make Westing
- 10 Woods Bar
- 11 Mad Oak
- 12 Layover
- 13 Luka's Taproom & Lounge
- 14 Mau
- Restaurants & Lunch Bites**
- 15 Drake's Brewery
- 16 Flora
- 17 Duende
- 18 Parlour
- 19 Ike's Place
- 20 Izzy's Steaks and Chops
- 21 The Gastropig
- 22 Mockingbird
- Coffee**
- 23 Modern Coffee
- 24 Aroma Café
- 25 Awaken Café
- 26 City Lights Cafe
- 27 Starbucks



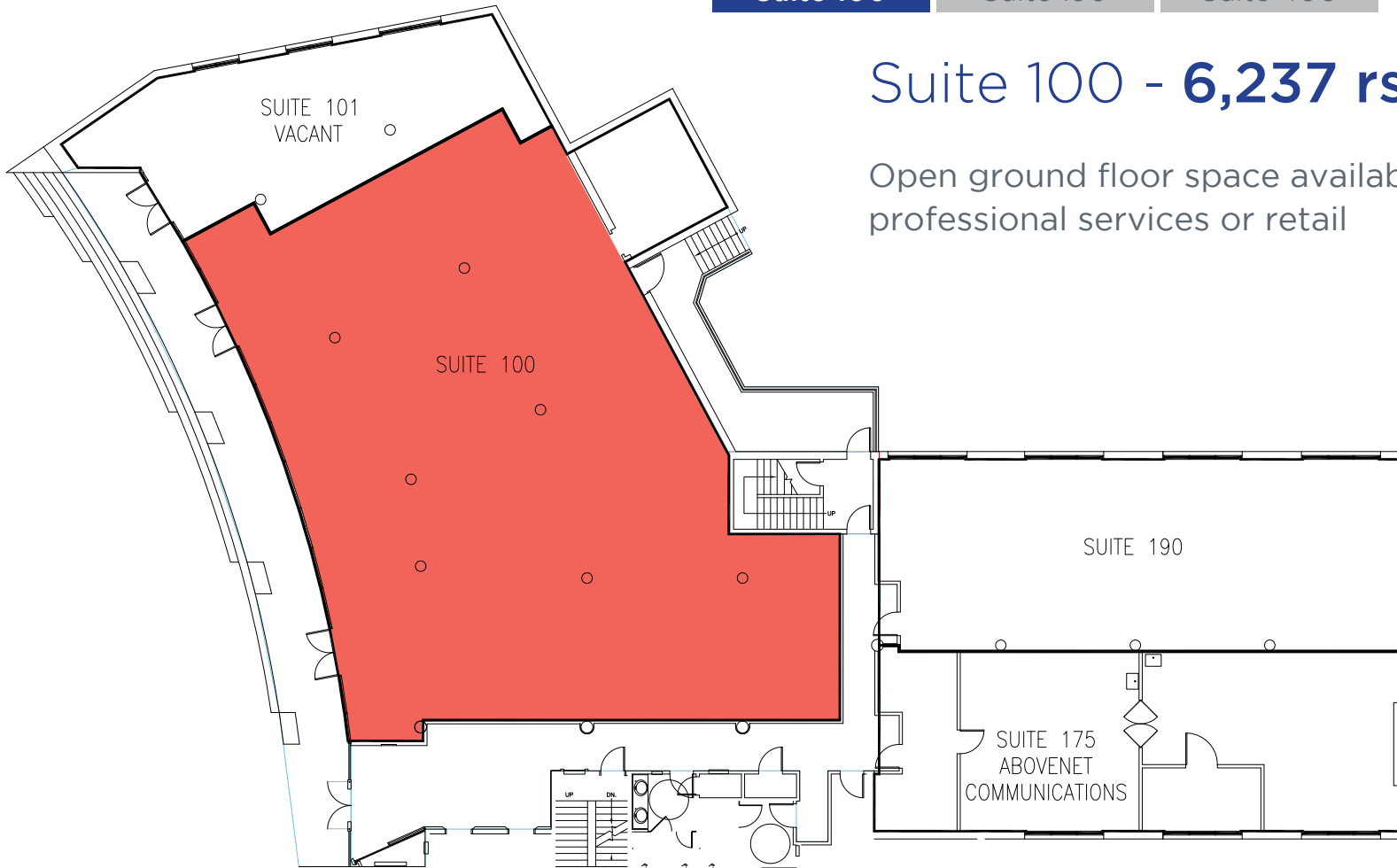
Floor Plan



Suite 100

Suite 190

Suite 400



Suite 100 - 6,237 rsf

Open ground floor space available for professional services or retail



Charles F. Allen, LEED AP
Principal, Managing Director
RE Lic #01158267
charlie.allen@avisonyoung.com
510.254.4260

Anthony Shell, LEED® AP
Principal
RE Lic #01743033
anthony.shell@avisonyoung.com
510.254.4263

Amber Merrigan
Associate
RE Lic #01905162
amber.merrigan@avisonyoung.com
510.254.4267

Floor Plan

AVAILABLE SPACE

BUILDING PHOTOS

NEIGHBORS & AMENITIES

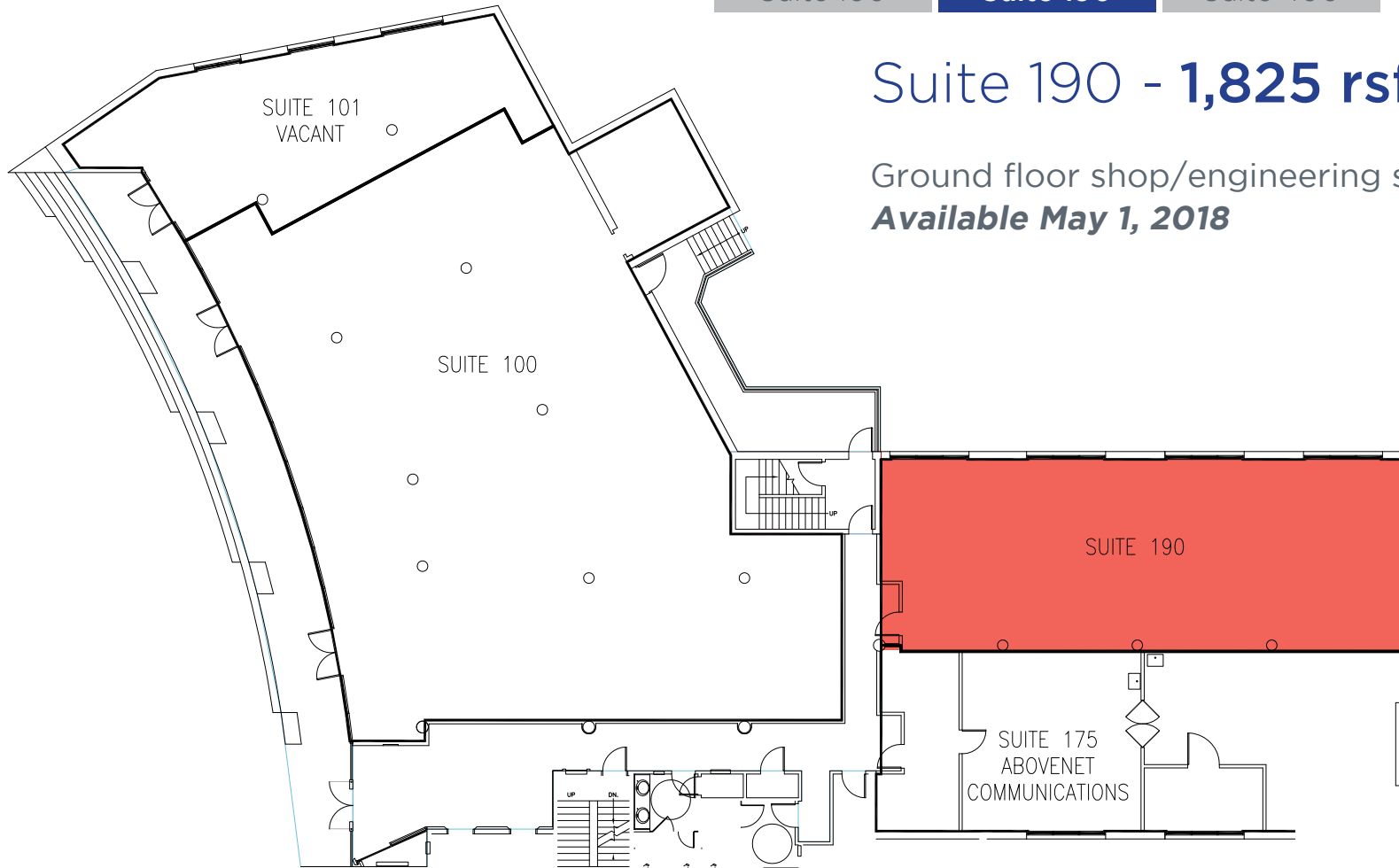
FLOOR PLAN



Suite 100

Suite 190

Suite 400



Suite 190 - 1,825 rsf

Ground floor shop/engineering space
Available May 1, 2018



Charles F. Allen, LEED AP
Principal, Managing Director
RE Lic #01158267
charlie.allen@avisonyoung.com
510.254.4260

Anthony Shell, LEED® AP
Principal
RE Lic #01743033
anthony.shell@avisonyoung.com
510.254.4263

Amber Merrigan
Associate
RE Lic #01905162
amber.merrigan@avisonyoung.com
510.254.4267

Floor Plan

AVAILABLE SPACE

BUILDING PHOTOS

NEIGHBORS & AMENITIES

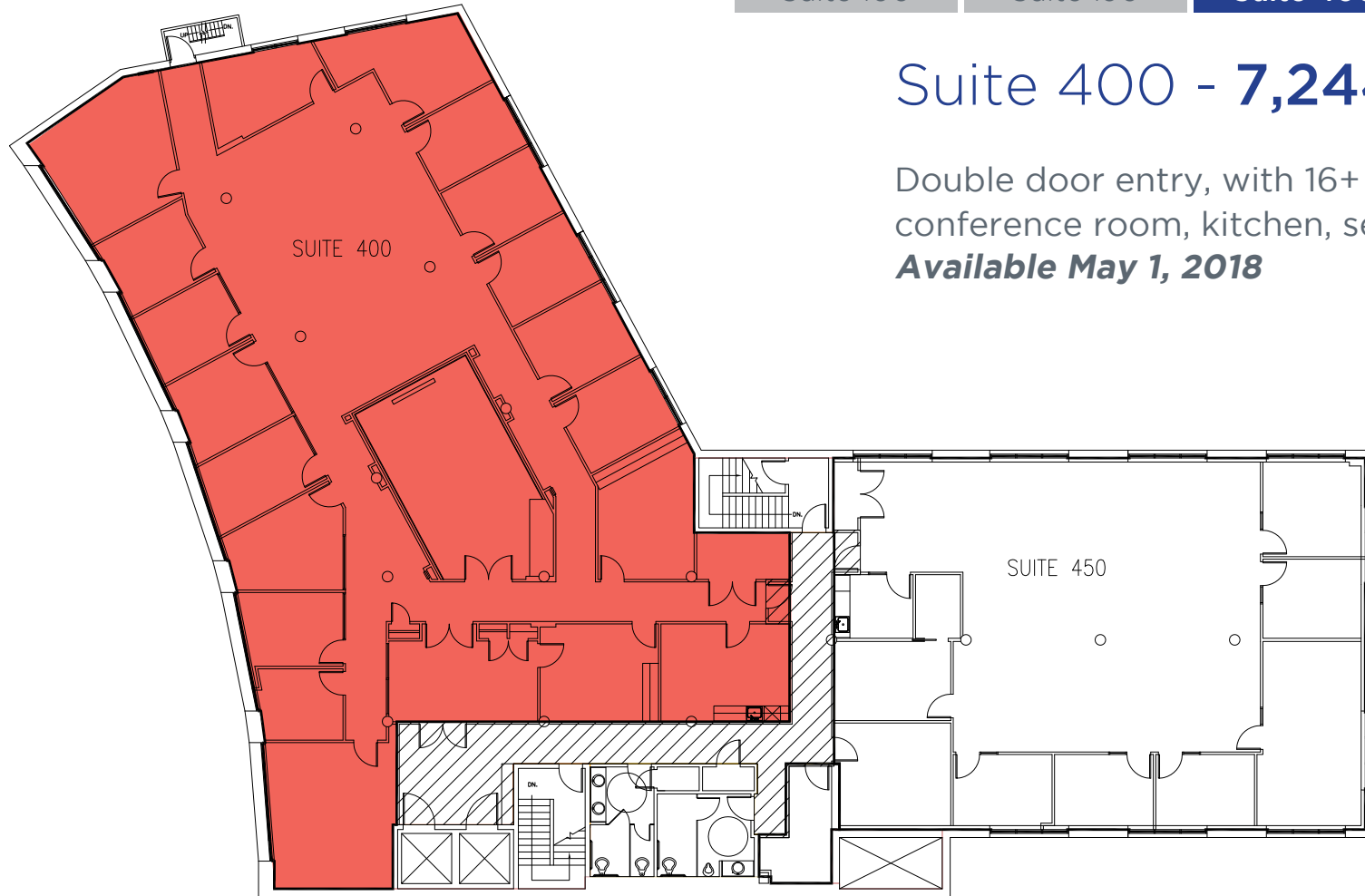
FLOOR PLAN



Suite 100

Suite 190

Suite 400



Suite 400 - 7,244 rsf

Double door entry, with 16+ private offices, one conference room, kitchen, server room

Available May 1, 2018



Charles F. Allen, LEED AP
Principal, Managing Director
RE Lic #01158267
charlie.allen@avisonyoung.com
510.254.4260

Anthony Shell, LEED® AP
Principal
RE Lic #01743033
anthony.shell@avisonyoung.com
510.254.4263

Amber Merrigan
Associate
RE Lic #01905162
amber.merrigan@avisonyoung.com
510.254.4267