

2 4 3

WORTH AVENUE PALM BEACH



LUXURY RETAIL FOR LEASE

ROBERT F. KLECINSKY

Director

(561) 227-2020

robert.klecinsky@cushwake.com

KAZUKO MORGAN

Vice Chairman

Lic. 01070005

(415) 773-3546

kazuko.morgan@cushwake.com



**CUSHMAN &
WAKEFIELD**

P R E M I S E S



2 4 3
W O R T H
A V E N U E

243 WORTH AVENUE - FOR LEASE



A true flagship building featuring **±34 feet of frontage**, 243 Worth Avenue provides a rare opportunity to establish an identity in this internationally recognized luxury retail destination.

INTERIOR



FLAGSHIP QUALITY FINISHES



FACING WORTH AVENUE

Existing interior can be reconfigured for an open concept to maximize floor space with storage in the rear.



VIEW FROM ENTRANCE



INTERIOR STORAGE

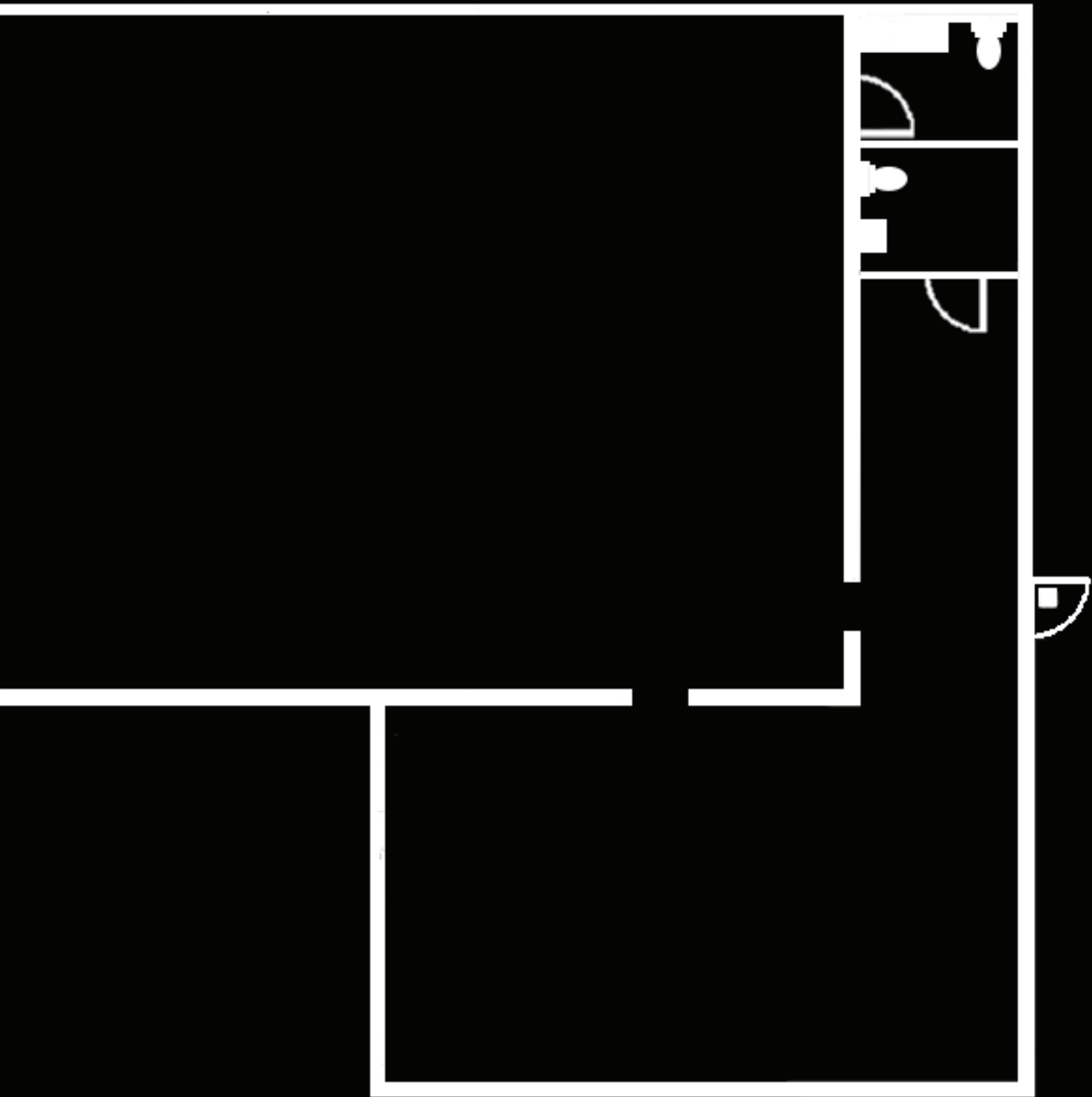


INTERIOR STORAGE

FLOOR PLAN



- Ground: \pm 4,878 SF
- Frontage: \pm 34' on Worth Avenue



P A L M B E A C H



WORTH AVENUE MID 1900s



FLAGLER MUSEUM MID 1900s



WORTH

Established in 1896 by Henry Flagler, the “founder of standard oil,” Palm Beach Island has long been a tropical destination and playground for the wealthy and elite from around the world. From its 14 miles of pristine beaches to the cultural landmarks including The Breakers Resort, Flagler Museum and Mar-a-Lago as well as the private clubs which include The Beach Club, Bath and Tennis, and the Mar-a-Lago Club, Palm Beach is a destination for anyone with an affluent lifestyle visiting South Florida.

FLORIDA



AVENUE 1925



PALM BEACH



JFK IN PALM BEACH 1948

Although the early years were marked by seasonal professionals and retailers, as Palm Beach has become a town of year-round activity, with better than 45,000 residents and guests in the winter months and more than 11,500 in the summer, its business and professional communities and luxury retailers have stepped up their services to meet the year round demand.

Palm Beach is home to 29 Billionaires including David Koch, Jack Taylor, Leonard Lauder and the owner of Mar-a-Lago, Donald Trump. Every season, Palm Beach hosts over 225 charity galas, benefiting 155 different charities, attended by those of high society from around the world.



WORTH AVENUE

243 WORTH AVENUE - FOR LEASE



With over 250 luxury retail stores and restaurants, the 3 blocks of Worth Avenue provide an intimate and exclusive shopping experience. The Town of Palm Beach and the Worth Avenue Association recently completed a \$18.5 Million street renovation, further enhancing the shopping experience for the clientele visiting Worth Avenue.

LOCATION MAP



PETER MILLAR



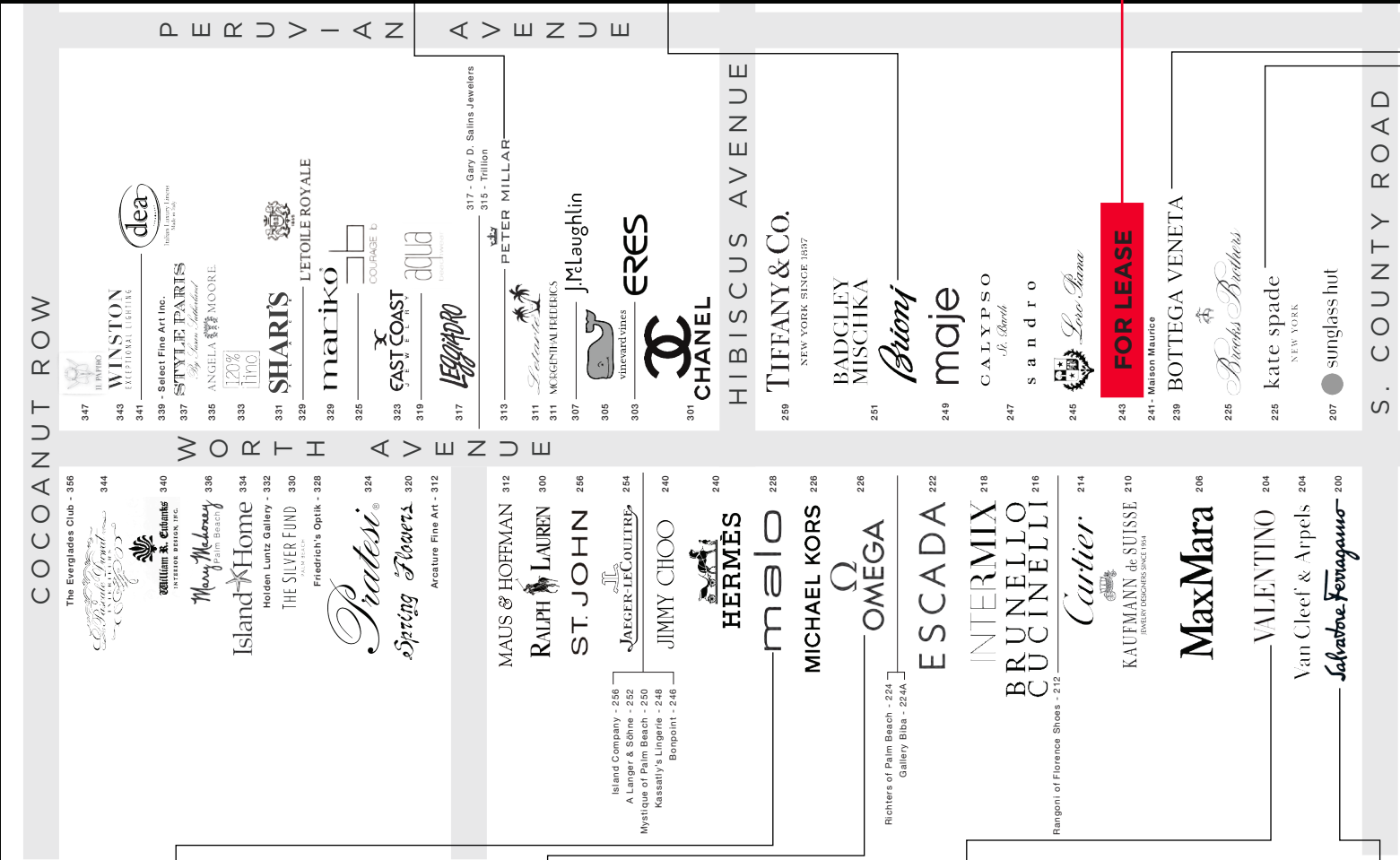
BRIONI



243 WORTH AVENUE



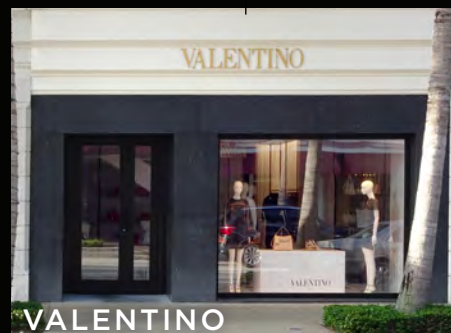
BOTTEGA VENETA



MALO



OMEGA

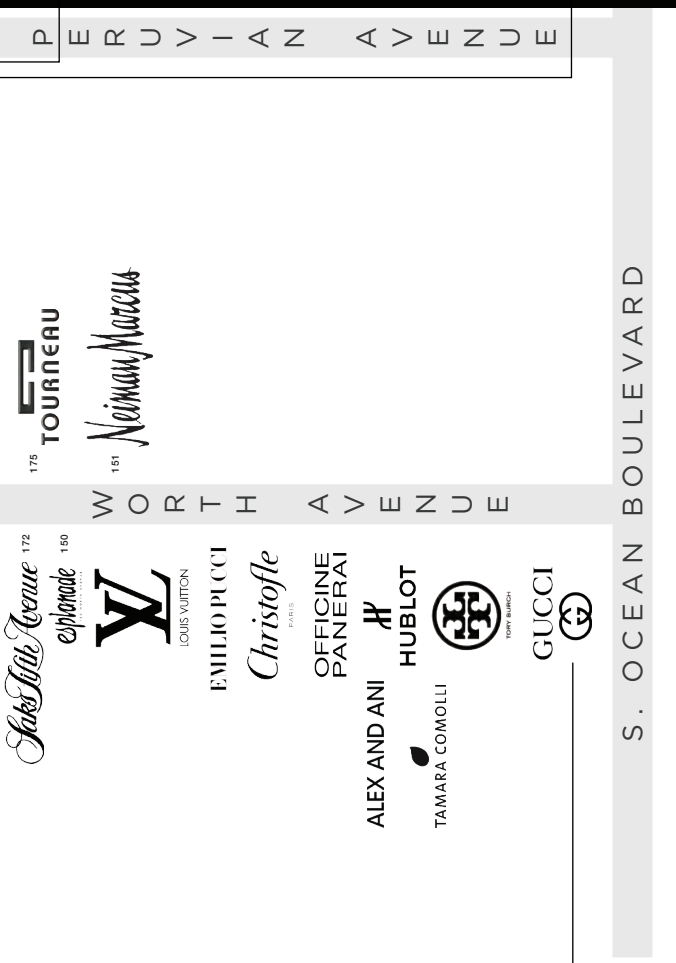


VALENTINO



SALVATORE FERRAGAMO

P



243 Worth Avenue is surrounded by prestigious brands such as Chanel, Tiffany & Co., Ralph Lauren, Hermès, Saks Fifth Avenue, Gucci, and Tourneau.



NEIGHBORING



TIFFANY & CO.



GUCCI



BROOKS BROTHERS



CARTIER, BRUNELLO CUCINELLI, INTERMIX

RETAILERS



2 4 3
W O R T H A V E N U E
P A L M B E A C H
RETAIL FOR LEASE

For more information, please contact:

ROBERT F. KLECINSKY

Director

(561) 227-2020

robert.klecinsky@cushwake.com

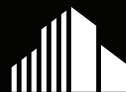
KAZUKO MORGAN

Vice Chairman

Lic. 01070005

(415) 773-3546

kazuko.morgan@cushwake.com



**CUSHMAN &
WAKEFIELD**

300 Banyan Boulevard, Suite 301

West Palm Beach, FL 33401

www.cushwake.com