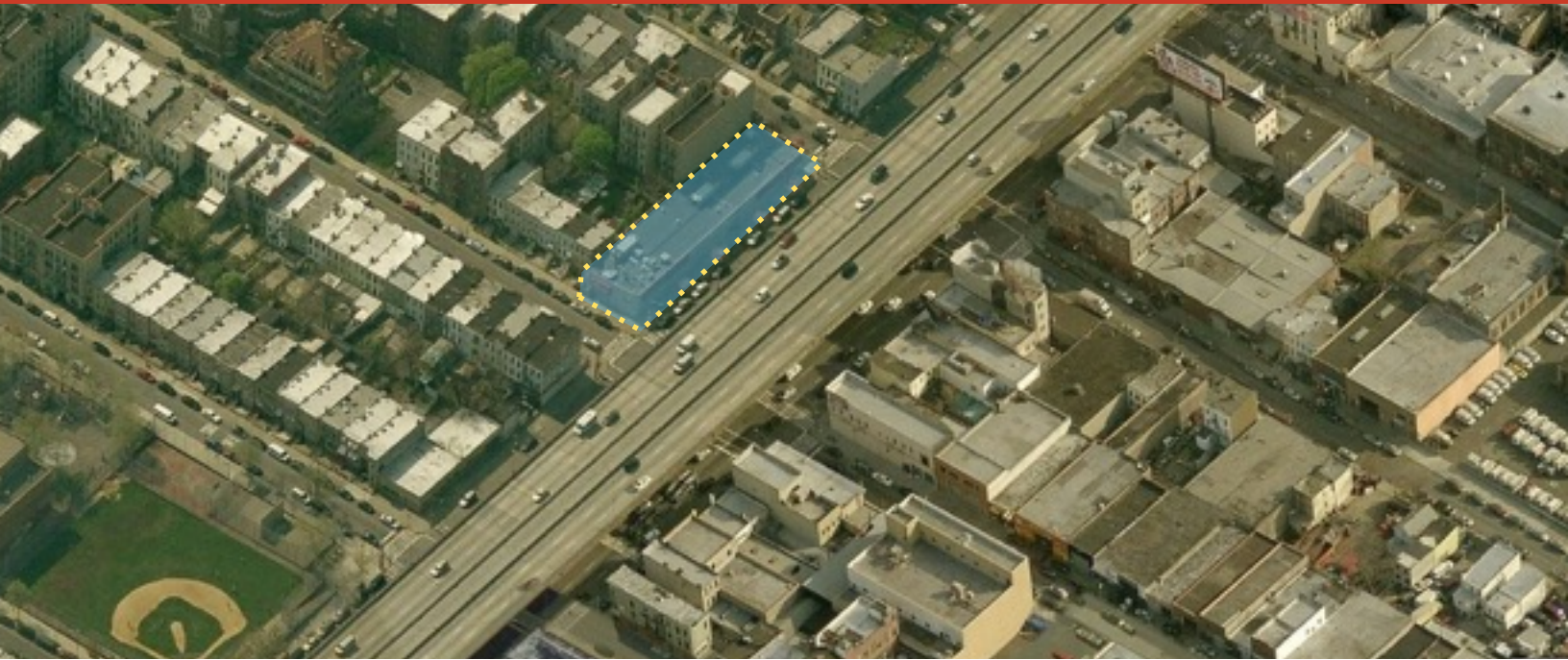


PRIME MEDICAL SPACE AVAILABLE FOR LEASE

313 43rd Street
Brooklyn, New York



BIOC Commercial Real Estate, LLC



Available Medical Space:

- 18,572 SF Building
- 11,000 SF Lower Level Suite
 - Elevator access
 - Built Out Medical Space
 - Adaptable to any Medical Specialty
- At Exit 23 of the Gowanus Expressway
- Walking Distance to the D, N, R & W Subway lines
- **Asking \$50.00 per SF Gross**



BIOC Commercial Real Estate, LLC

"In the Best Interest of Our Clients"

The information contained herein has been obtained from sources considered to be reliable, but no guarantee of its accuracy is made by BIOC Commercial Real Estate, LLC.

PRIME MEDICAL SPACE AVAILABLE FOR LEASE

313 43rd Street
Brooklyn, New York



BIOC Commercial Real Estate, LLC



BIOC Commercial Real Estate, LLC

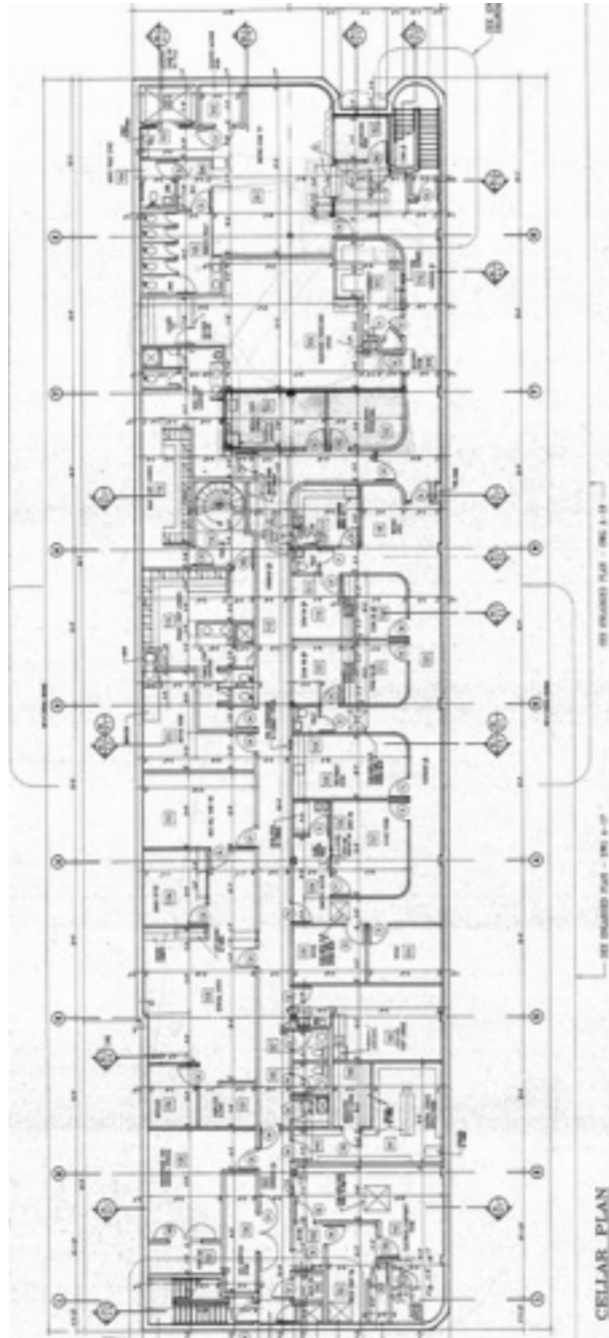
"In the Best Interest of Our Clients"

PRIME MEDICAL SPACE AVAILABLE FOR LEASE

313 43rd Street
Brooklyn, New York



BIOC Commercial Real Estate, LLC



For more information, contact exclusive agents:

Jonathan D. Stravitz
jstravitz@biocre.com
212.252.8799

John B. Aires
jaires@biocre.com
212.252.8766



BIOC Commercial Real Estate 6 East 39th Street, Suite 304, New York, New York 10016