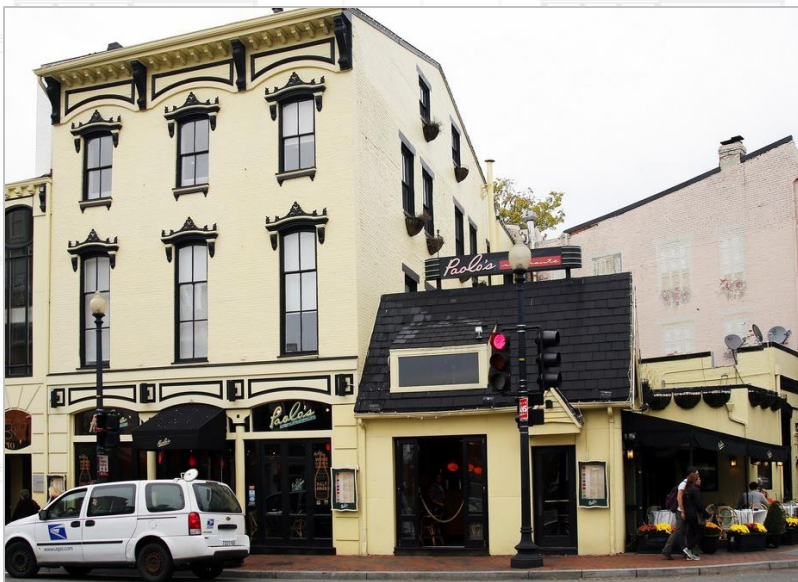


Unique Office Space 1305 Wisconsin Avenue, NW

Available Terms:

- 4,273 rentable square feet
- Flexible terms
- \$42.50 Full Service
- Rent Negotiable
- Prominent corner of Georgetown
- High-end finishes
- Available 60 days



Fletcher Gill
202.735.5382

fletcher.gill@thegenaugroup.com

Adam Collins
202.290.1582

adam.collins@thegenaugroup.com

Greg Tabb
202.450.3701

greg.tabb@thegenaugroup.com

Unique Office Space 1305 Wisconsin Avenue, NW

Highlights:

- Full Floor Opportunities
- Three sides of glass
- Hardwood Floors
- Direct Elevator Access
- Two Blocks From M St
- Loft Style Space
- Kitchen
- High end appliances
- Private Restrooms
- Full bathroom with shower
- Large enclosed deck
- Reception and storage



Fletcher Gill
202.735.5382

fletcher.gill@thegenaugroup.com

Adam Collins
202.290.1582

adam.collins@thegenaugroup.com

Greg Tabb
202.450.3701

greg.tabb@thegenaugroup.com

Photo Gallery

1305 Wisconsin Avenue, NW



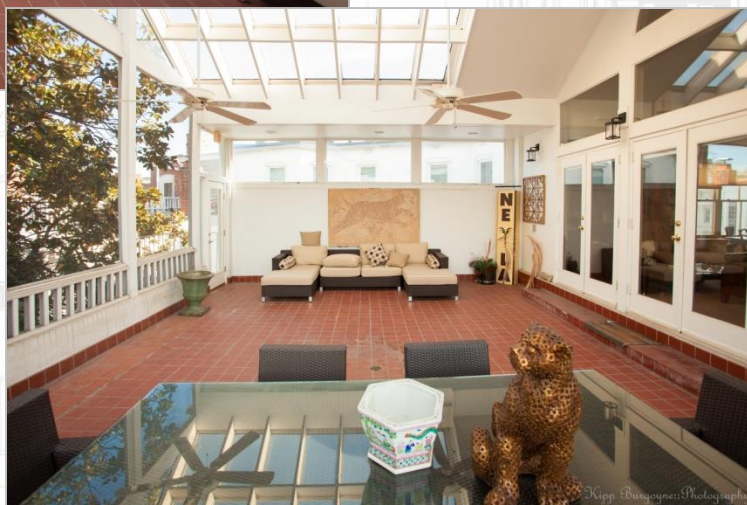
Fletcher Gill
202.735.5382
fletcher.gill@thegenaugroup.com

Adam Collins
202.290.1582
adam.collins@thegenaugroup.com

Greg Tabb
202.450.3701
greg.tabb@thegenaugroup.com

Photo Gallery

1305 Wisconsin Avenue, NW



Fletcher Gill
202.735.5382
fletcher.gill@thegenaugroup.com

Adam Collins
202.290.1582
adam.collins@thegenaugroup.com

Greg Tabb
202.450.3701
greg.tabb@thegenaugroup.com

Photo Gallery

1305 Wisconsin Avenue, NW



Fletcher Gill
202.735.5382
fletcher.gill@thegenaugroup.com

Adam Collins
202.290.1582
adam.collins@thegenaugroup.com

Greg Tabb
202.450.3701
greg.tabb@thegenaugroup.com

Photo Gallery

1305 Wisconsin Avenue, NW



Fletcher Gill
202.735.5382
fletcher.gill@thegenaugroup.com

Adam Collins
202.290.1582
adam.collins@thegenaugroup.com

Greg Tabb
202.450.3701
greg.tabb@thegenaugroup.com

Photo Gallery

1305 Wisconsin Avenue, NW



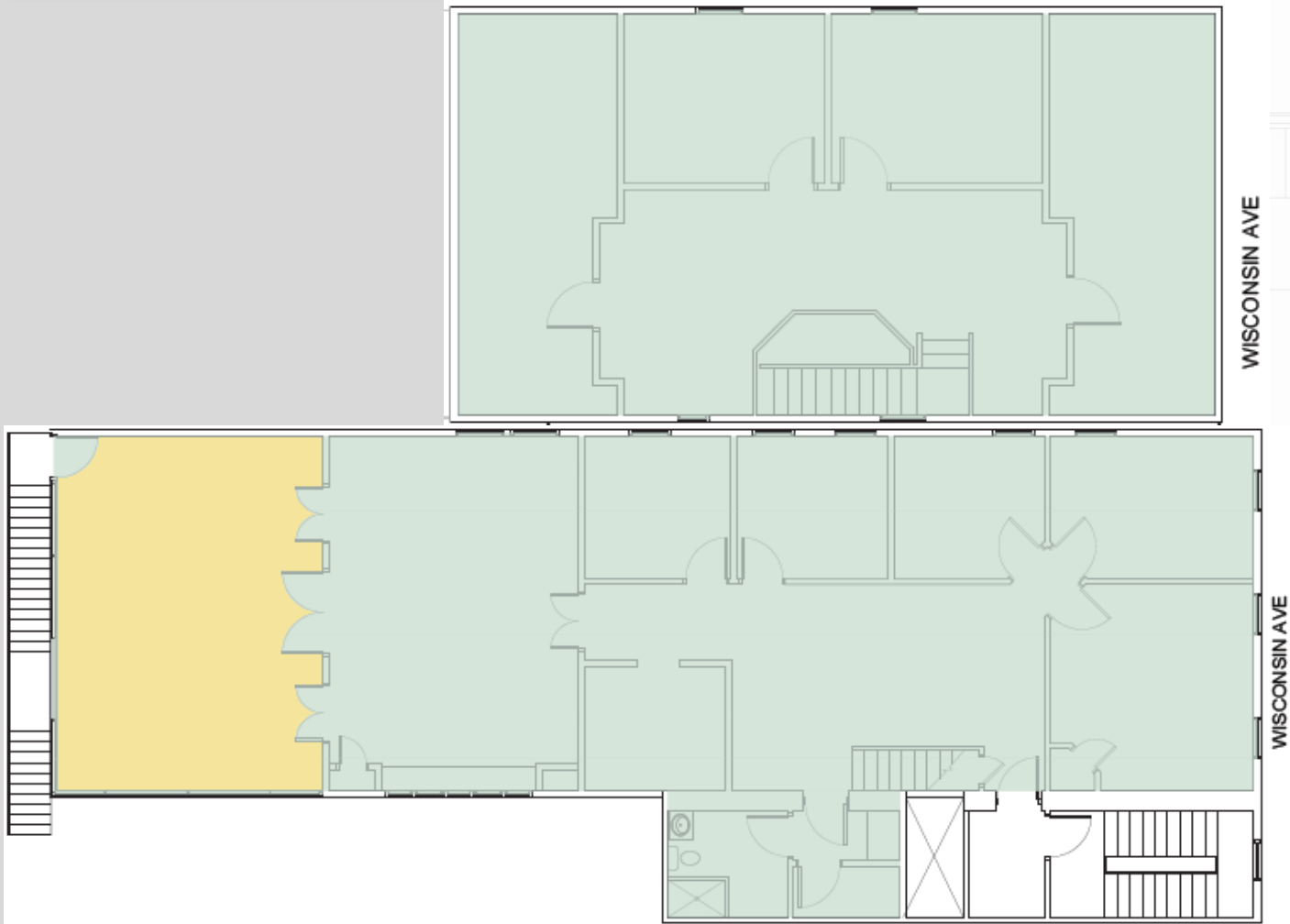
Fletcher Gill
202.735.5382
fletcher.gill@thegenaugroup.com

Adam Collins
202.290.1582
adam.collins@thegenaugroup.com

Greg Tabb
202.450.3701
greg.tabb@thegenaugroup.com

Level 3 Floor Plans

1305 Wisconsin Avenue, NW



Top: 4th Floor Loft. Bottom: 3rd Floor main office area with large semi-enclosed deck (shaded in brown). Floor plans with measurements and CAD Files available upon request

Fletcher Gill
202.735.5382

fletcher.gill@thegenaugroup.com

Adam Collins
202.290.1582

adam.collins@thegenaugroup.com

Greg Tabb
202.450.3701

greg.tabb@thegenaugroup.com