

FOR LEASE

SIERRA VALENCIA

NEC VALENCIA/HEMISPHERE LOOP

3280 E HEMISPHERE LOOP

Tucson, Arizona

TWO NEW TECH FLEX SPACES

Suite	SF	Lease Rate	Description
112	±3,216	\$.60/sf/month NNN	Office space with small warehouse.

Total Size	±82,737 SF multi-tenant industrial building
Acreage	±5.5 acres
Construction	Tilt-up concrete building with contemporary architectural features
NNN Charges	NNN charges: \$.18 PSF (below market)
Parking	199 spaces (44 covered)
Clear Height	±16'
Sprinklers	Fully sprinklered
Zoning	I-1 City of Tucson, light industrial
Fiber	Cox Cable, T-1, and Time Warner Fiber
Traffic Counts	Valencia Road: 33,998 cars per day (PAG 2014)



CONTACT US

TIM HEALY

Vice President
+1 520 323 5119
tim.healy@cbre.com

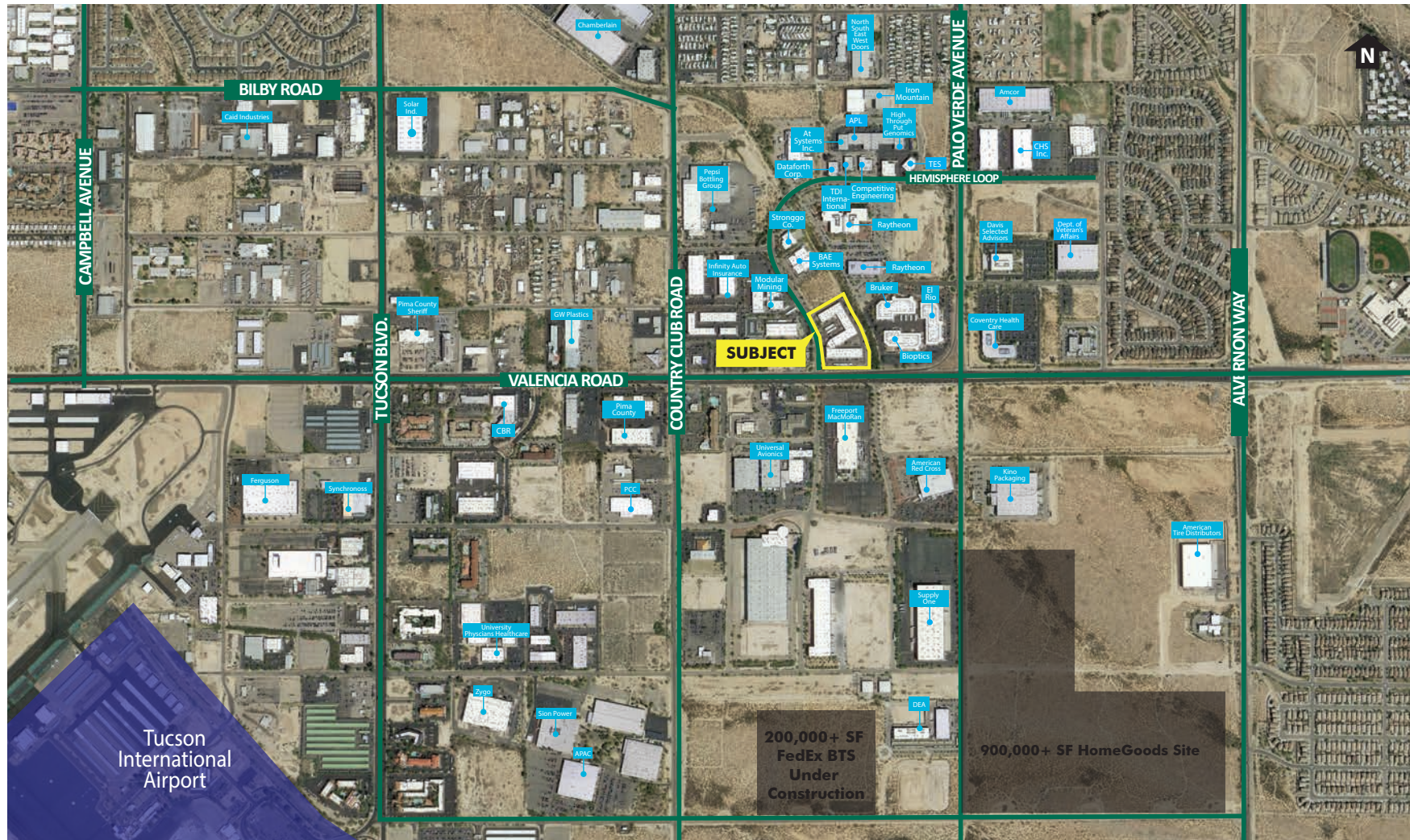
www.cbre.us/tim.healy

CBRE

FOR LEASE SIERRA VALENCIA

3280
E HEMISPHERE LOOP
Tucson, Arizona

CORPORATE NEIGHBORS AERIAL



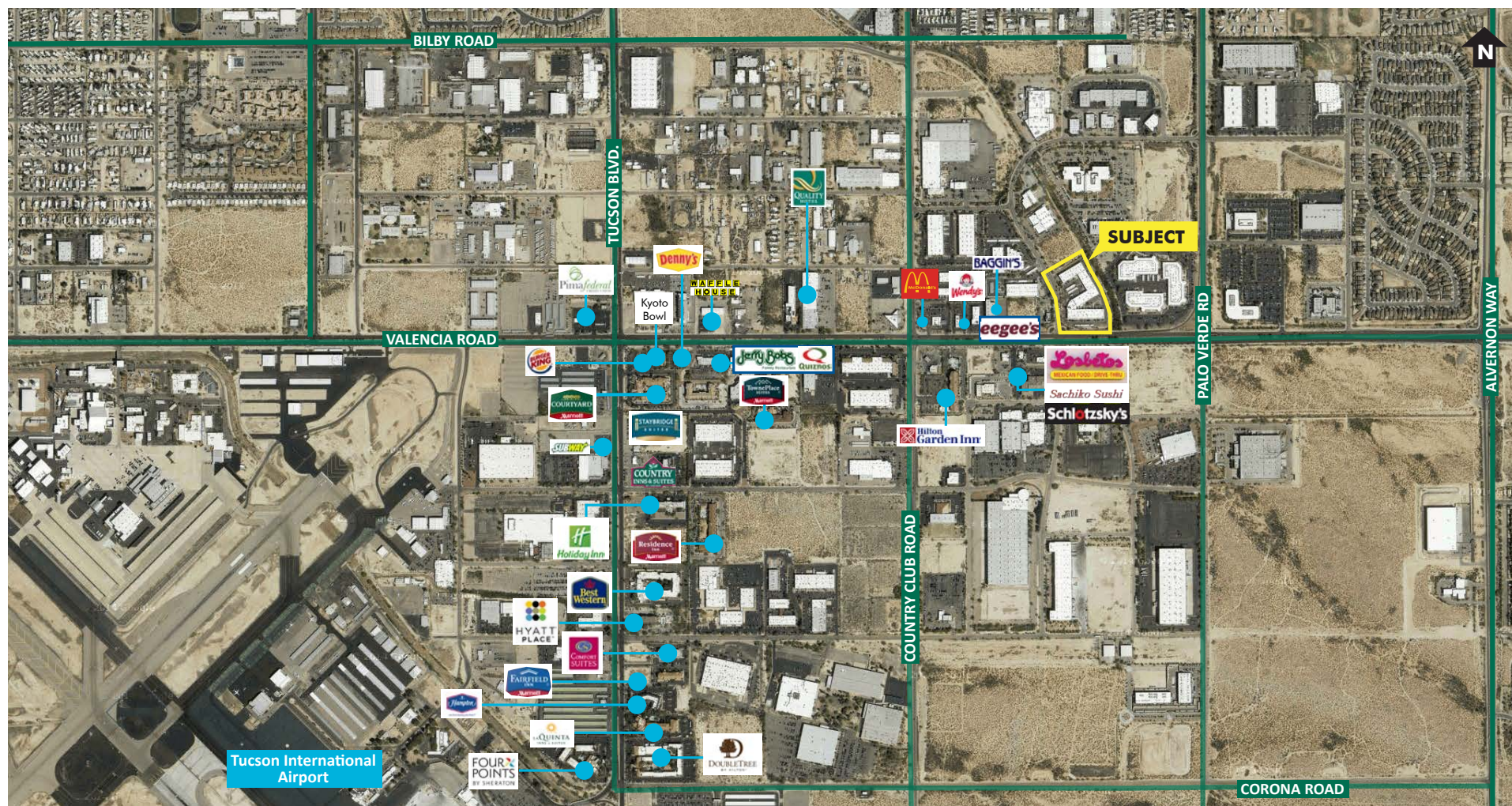
www.cbre.us/tim.healy

CBRE

FOR LEASE
SIERRA VALENCIA

3280
E HEMISPHERE LOOP
Tucson, Arizona

AMENITIES AERIAL

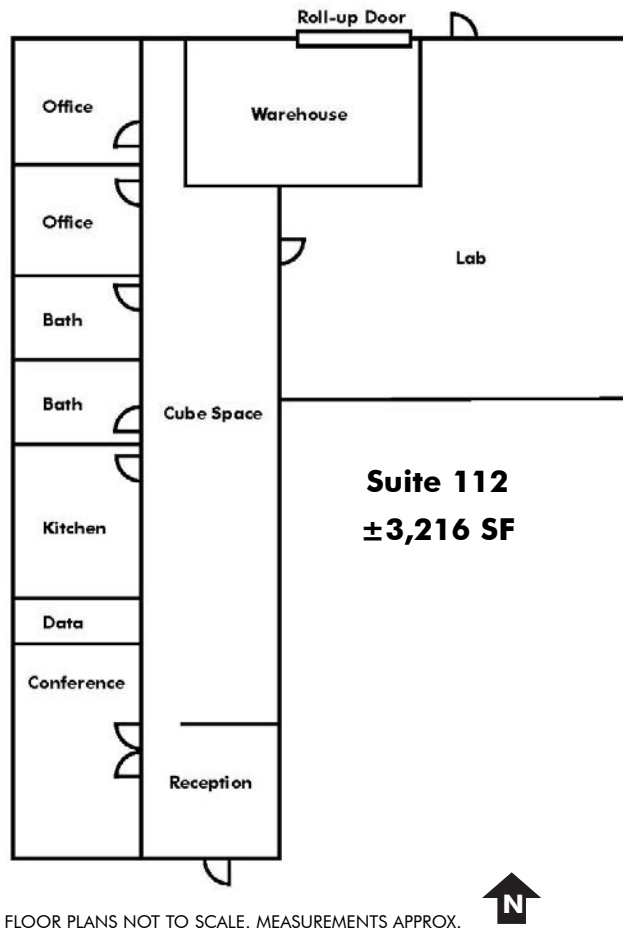


www.cbre.us/tim.healy



FOR LEASE SIERRA VALENCIA

3280
E HEMISPHERE LOOP
Tucson, Arizona



© 2018 CBRE, Inc. All rights reserved. This information has been obtained from sources believed reliable, but has not been verified for accuracy or completeness. You should conduct a careful, independent investigation of the property and verify all information. Any reliance on this information is solely at your own risk. CBRE and the CBRE logo are service marks of CBRE, Inc. and/or its affiliated or related companies in the United States and other countries. All other marks displayed on this document are the property of their respective owners. Photos herein are the property of their respective owners and use of these images without the express written consent of the owner is prohibited.

www.cbre.us/tim.healy

CBRE