

# 163 MAIN STREET

WESTPORT, CT (SECOND FLOOR)



## USAGE

OFFICE, FITNESS, RETAIL

## SIZE

2,300 RSF (DIVISIBLE)

## RENT PSF

\$35 GROSS + UTILITIES

## AVAILABLE

60 DAYS

**DESCRIPTION:** Downtown office or retail space overlooking Westport's prestigious Main Street. Prime location on the second floor above Madewell and Rye Ridge Deli. Space may be demised to 1,000 – 1,500 +/- rsf. Suitable for office, medical office, retail, or fitness use.

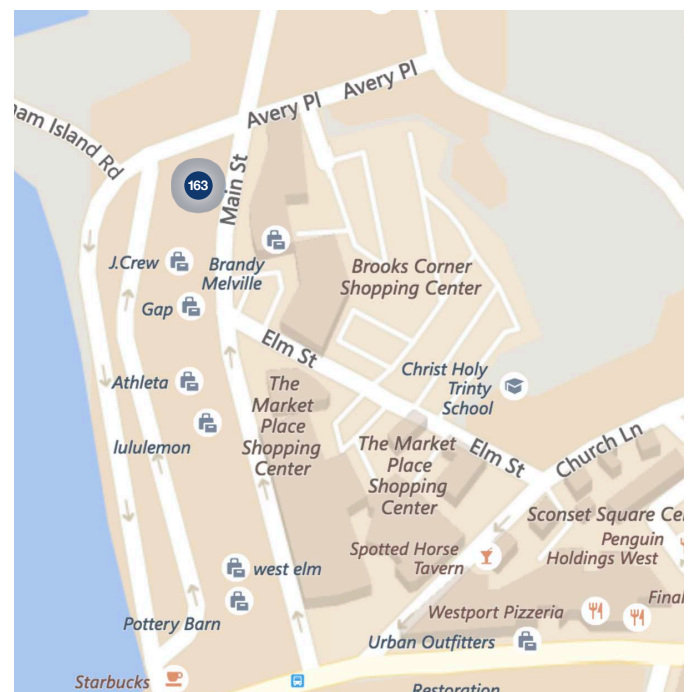
## CONTACT:

Sean Grathwohl

203.349.5005 | sean@davidadamrealty.com

Sharon Maddern

203.341.7491 | sharon@davidadamrealty.com

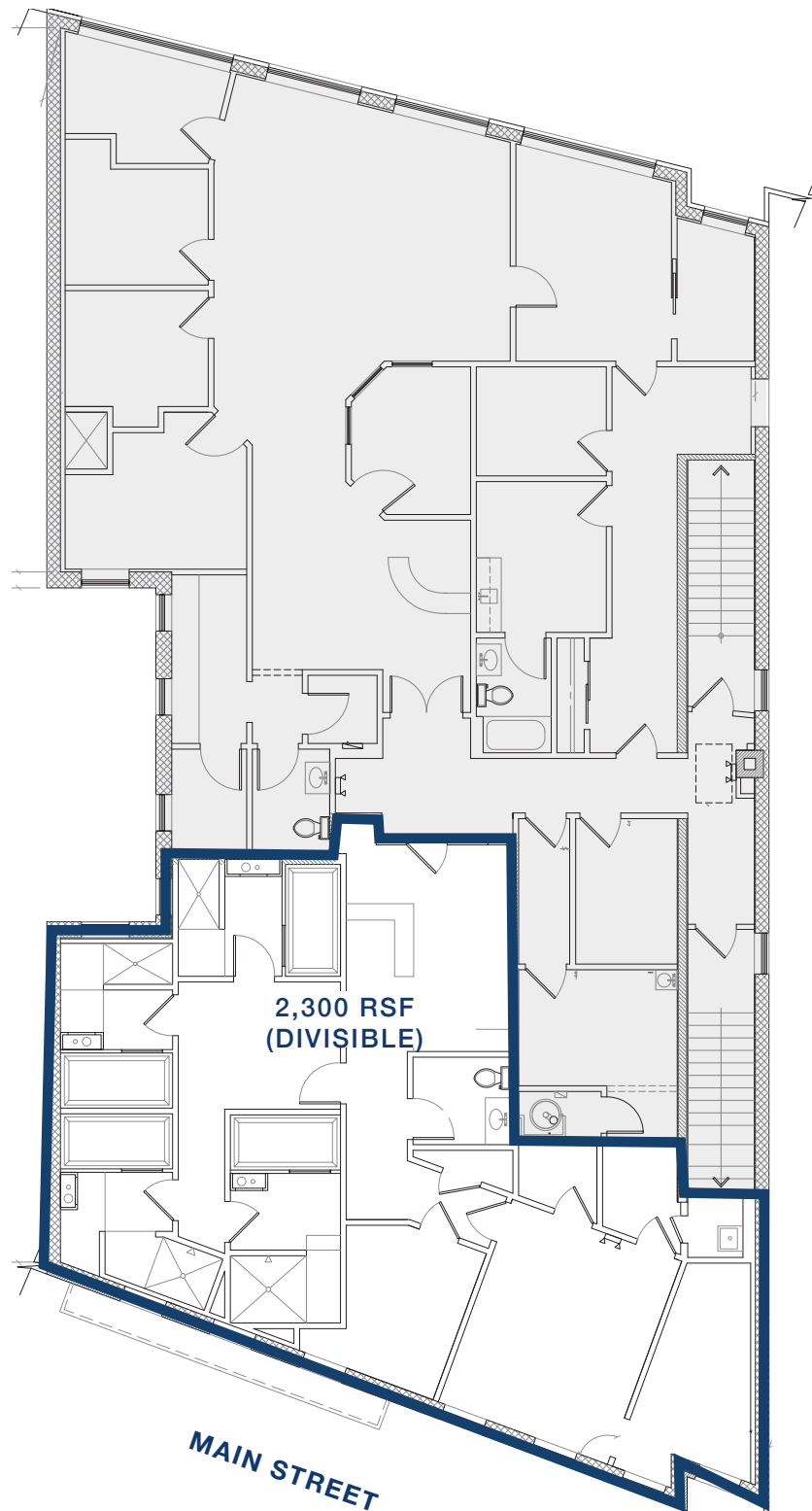


57 Wilton Road, Westport, CT 06880 | Phone 203.221.8148 | Fax 203.341.7494 | [www.davidadamrealty.com](http://www.davidadamrealty.com)

The information above has been obtained from sources believed to be reliable. While we do not doubt it's accuracy, we have not verified it and make no guarantee, warranty or representation about it. It is your responsibility to independently confirm its accuracy and completeness.

# 163 MAIN STREET

WESTPORT, CT (SECOND FLOOR)



57 Wilton Road, Westport, CT 06880 | Phone 203.221.8148 | Fax 203.341.7494 | [www.davidadamrealty.com](http://www.davidadamrealty.com)

The information above has been obtained from sources believed to be reliable. While we do not doubt it's accuracy, we have not verified it and make no guarantee, warranty or representation about it. It is your responsibility to independently confirm its accuracy and completeness.