

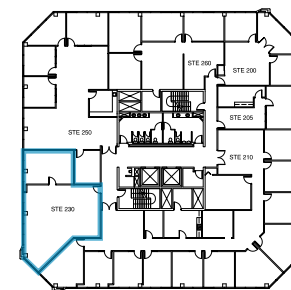
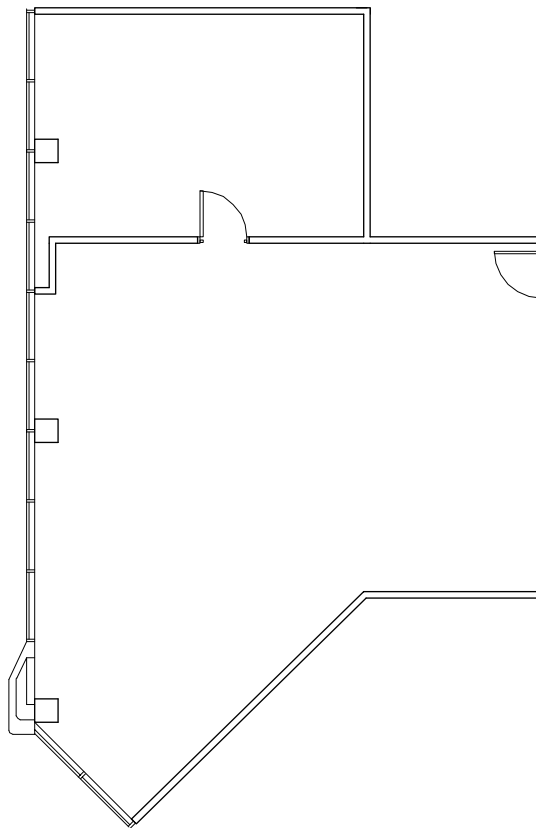
# CATALINA LANDING

AT GOLDEN SHORE



310 | 320 | 330 | 340 GOLDEN SHORE • LONG BEACH

330 GOLDEN SHORE  
SUITE 230 | 1,212 RSF  
VACANT



EXCLUSIVELY LEASED BY:



Corporate CA RE Lic. #01355491

**James Estrada**  
Senior Managing Director  
CA RE Lic. #00930168  
949.608.2031  
[james.estrada@ngkf.com](mailto:james.estrada@ngkf.com)

**George Thomson**  
Senior Managing Director  
CA RE Lic. #00947200  
949.608.2037  
[george.thomson@ngkf.com](mailto:george.thomson@ngkf.com)

PROFESSIONALLY MANAGED BY:

# RISING

The distributor of this communication is performing acts for which a real estate license is required. The information contained herein has been obtained from sources deemed reliable but has not been verified and no guarantee, warranty or representation, either express or implied, is made with respect to such information. Terms of sale or lease and availability are subject to change or withdrawal without notice.