

28105-28151 WOODWARD AVE
1130 CATALPA DRIVE
BERKLEY, MICHIGAN
OFFICE/MEDICAL FOR LEASE
1,420 Square Feet Available



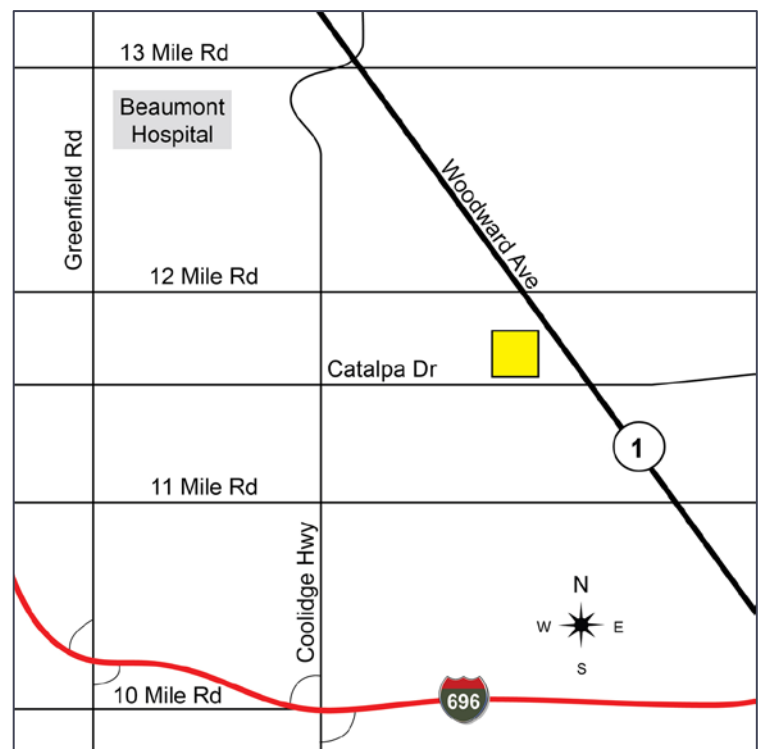
**SIGNATURE
ASSOCIATES**
KNOW SIGNATURE | KNOW RESULTS

CATALPA CROSSING



PROPERTY FEATURES

- 1,420 square feet available
- Immediate occupancy
- Office/medical space in a terrific location
- Excellent Woodward Avenue visibility and signage
- Flexible zoning, perfect for many uses
- Situated on growing Woodward Avenue corridor
- Great demographics



For more information, please contact:

CHRIS SECONTINE
(248) 799 3174
csecontine@signatureassociates.com

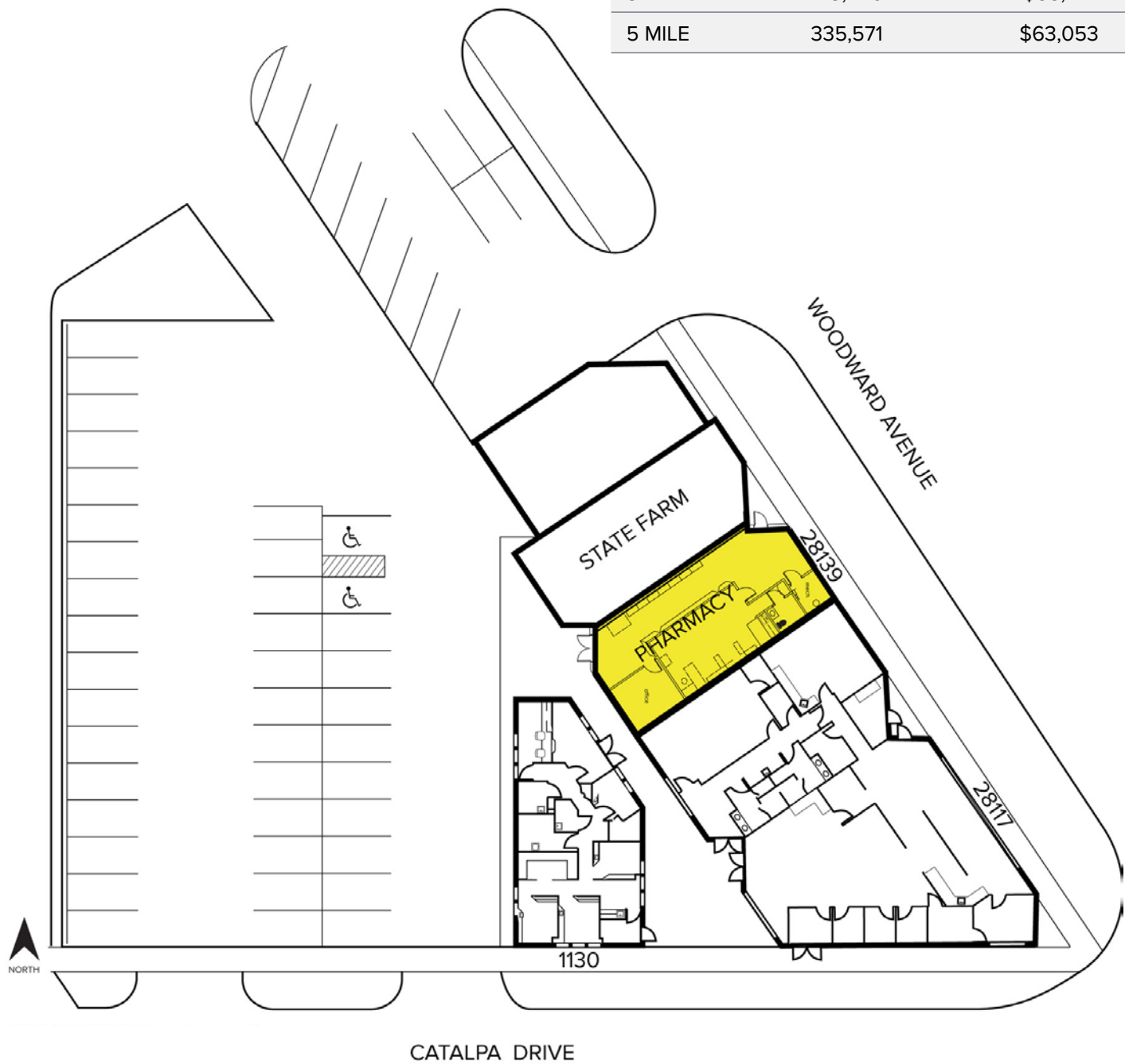
SIGNATURE ASSOCIATES
One Towne Square, Suite 1200
Southfield, MI 48076
www.signatureassociates.com

28105-28151 Woodward & 1130 Catalpa - Berkley, MI
Office/Medical For Lease

1,420
Square Feet
AVAILABLE

Site Plan

DEMOGRAPHICS		
	POPULATION	MED. HH INCOME
1 MILE	17,217	\$84,546
3 MILE	148,240	\$68,147
5 MILE	335,571	\$63,053



For more information, please contact:

CHRIS SECONTINE
(248) 799 3174
csecontine@signatureassociates.com

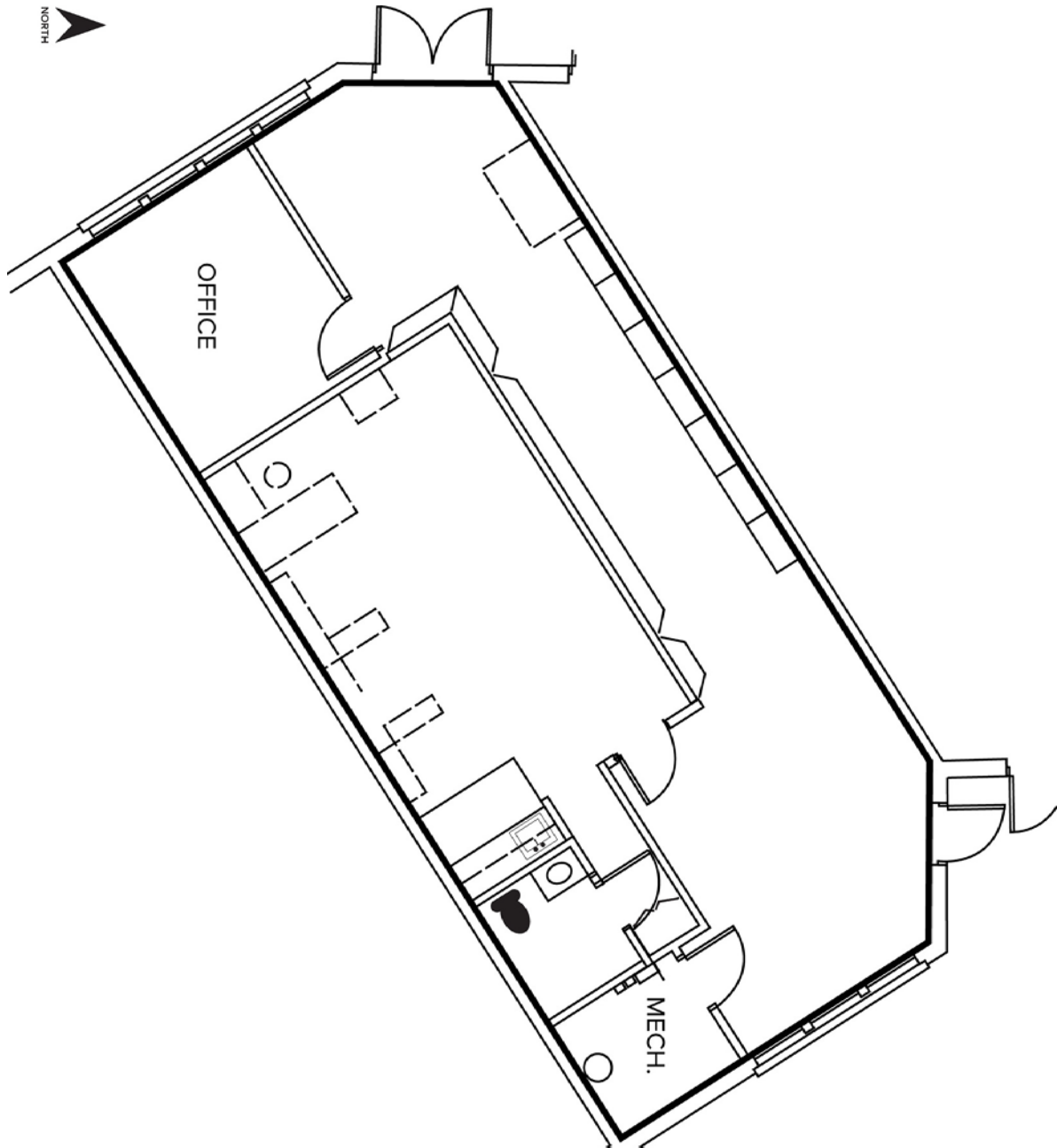
SIGNATURE ASSOCIATES
One Towne Square, Suite 1200
Southfield, MI 48076
www.signatureassociates.com

28105-28151 Woodward & 1130 Catalpa - Berkley, MI

Office/Medical For Lease

1,420
Square Feet
AVAILABLE

Suite 28139 – 1,420 sf



For more information, please contact:

CHRIS SECONTINE
(248) 799 3174
csecontine@signatureassociates.com

SIGNATURE ASSOCIATES
One Towne Square, Suite 1200
Southfield, MI 48076
www.signatureassociates.com

Information is subject to verification and no liability for errors or omissions is assumed. Price is subject to change and listing withdrawal.