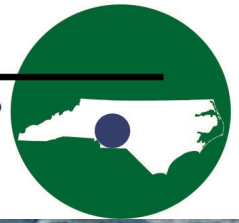


# South Central. *properties*



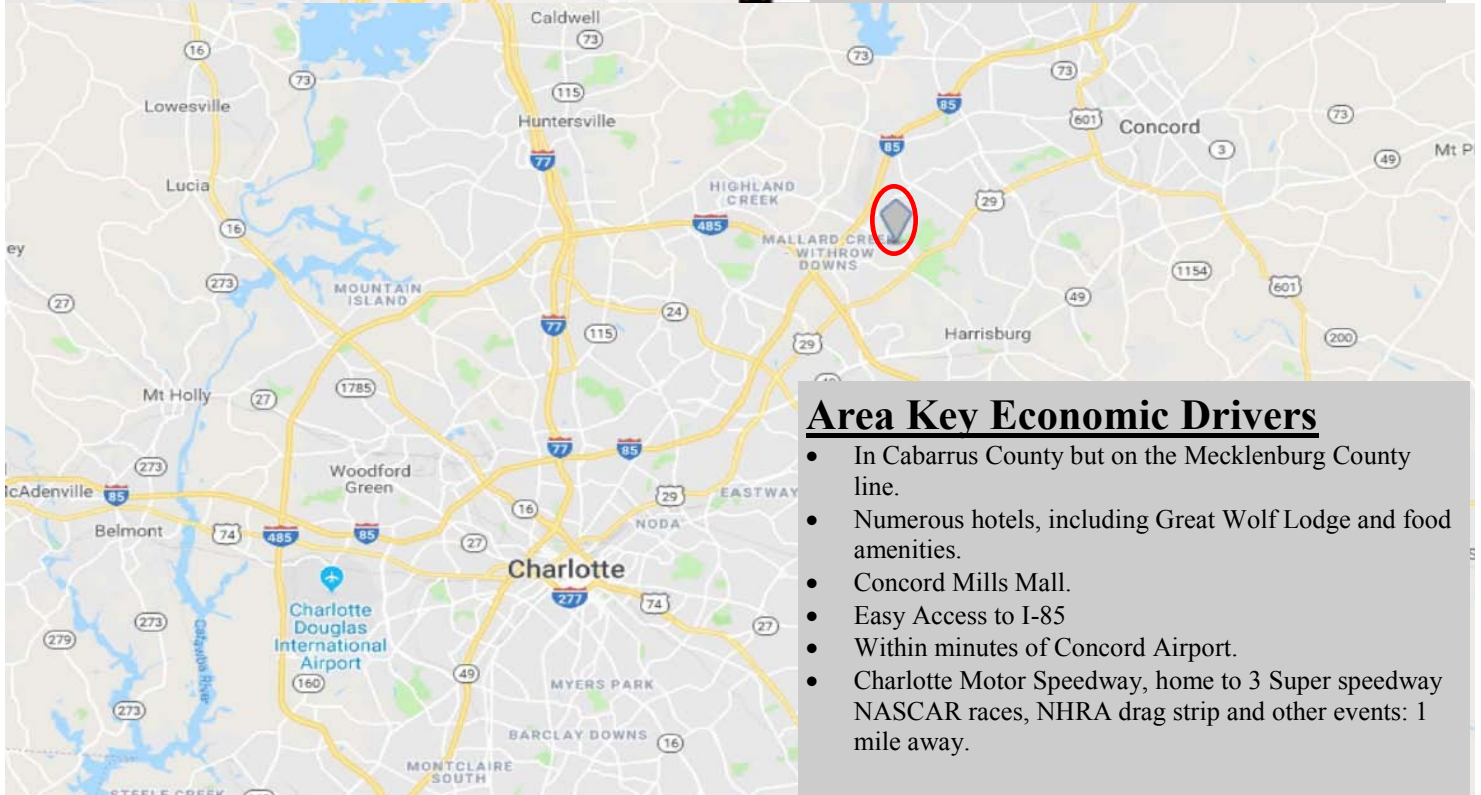
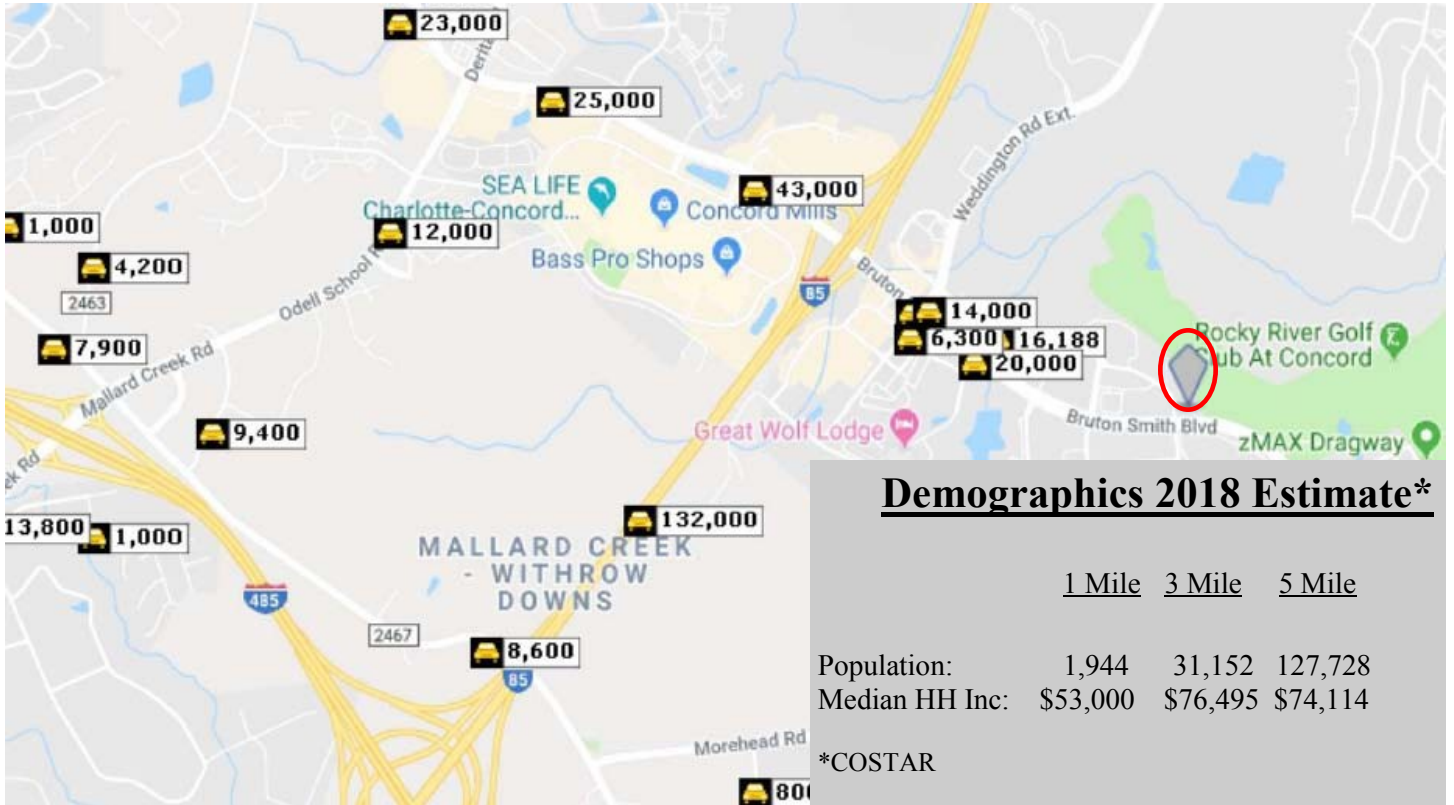
## FOR SALE

**Thomas Propst**  
**South Central Properties**  
**845 Church Street N, Suite 305-B**  
**Concord, NC 28025**  
**704-787-4850**  
**[www.southcentralproperties.com](http://www.southcentralproperties.com)**

- +/- 6.28 Acres Zoned C-2 (Per City of Concord) but with Convention Center Overlay use restrictions.
- \$3,750,000 \*\*Ownership will consider a subdivision sale.
- Located off of EXIT 49 in Concord, NC.
- Close proximity to Charlotte Motor Speedway, Concord Regional Airport and Concord Mills Mall. (\*Concord Mills attracts over 17 million visitors a year and is one of North Carolina's largest tourist attractions) \*city-data.com
- Over 400' of frontage on Bruton Smith Blvd.
- Over 800' of frontage on John Q Hammons Dr.
- ADT on Bruton Smith Blvd.: 20,000 (MPSI—Costar)
- Full movement median cut.

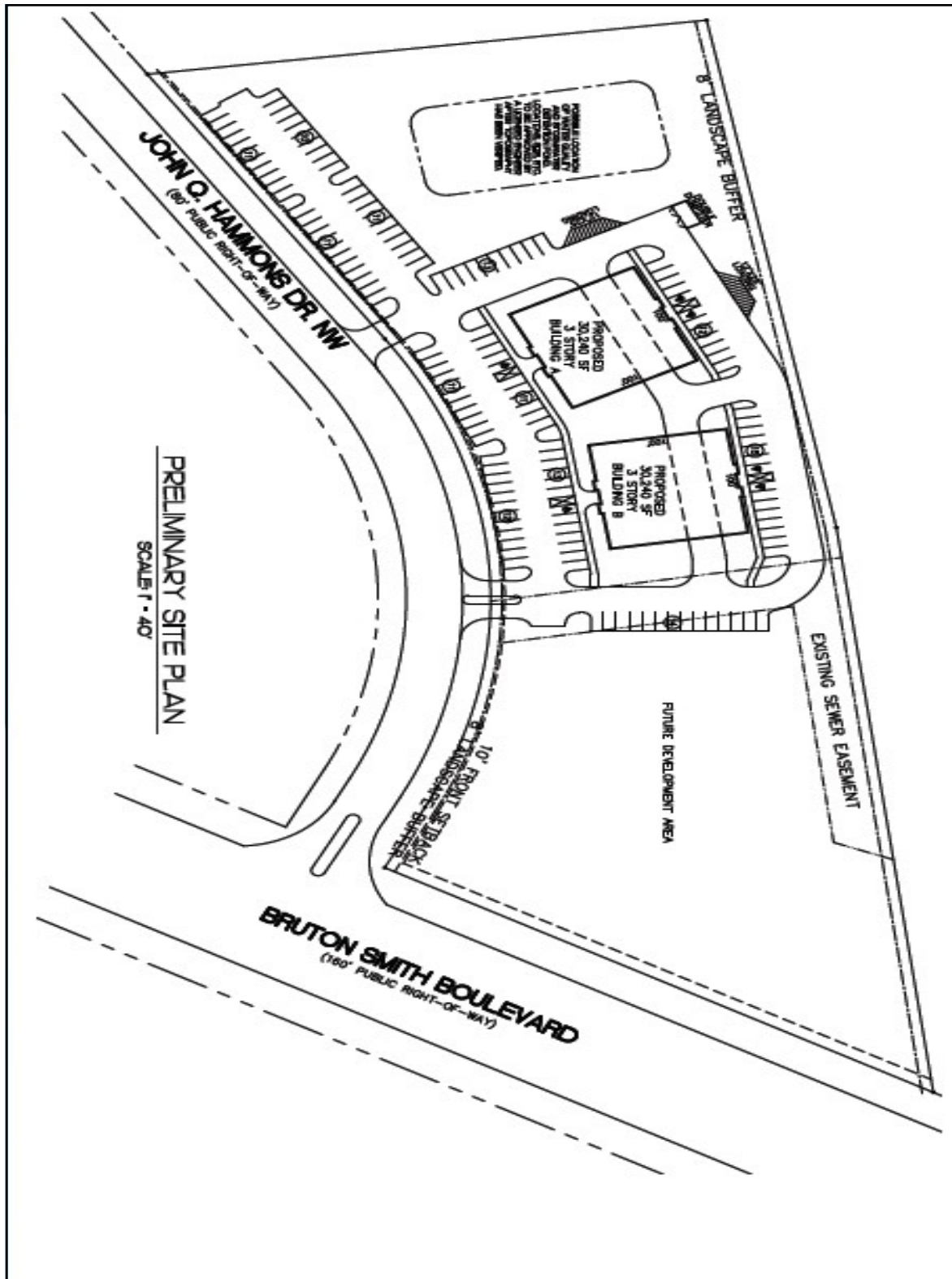
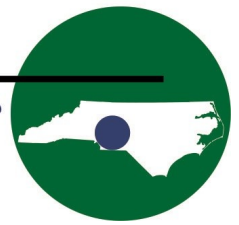
Every effort has been made to provide accurate information but no liability is assumed for errors and omission.

# South Central. *properties*



Every effort has been made to provide accurate information but no liability is assumed for errors and omission.

# South Central. *properties*



Every effort has been made to provide accurate information but no liability is assumed for errors and omission.