

Last Space Available!

SEC Daisy Mountain Dr & Anthem Way | Phoenix, AZ



Available: ±1,056 SF (Coming available - January 2019)

Zoning: C-2

Join:



Comments:

- High median incomes
- Strong daytime population
- Going home side

Population Summary:

2017 Total
2022 Total

1 Mile

8,593
9,077

3 Miles

34,322
36,923

5 Miles

56,005
60,962

Median HH Income:

2017

1 Mile

\$104,382

3 Miles

\$90,284

5 Miles

\$87,269



3131 East Camelback Road, Suite 340

Phoenix, Arizona 85016

Phone: 602-957-9800 Fax: 602-957-0889

www.phoenixcommercialadvisors.com



Nick DeDonna

602-734-7208

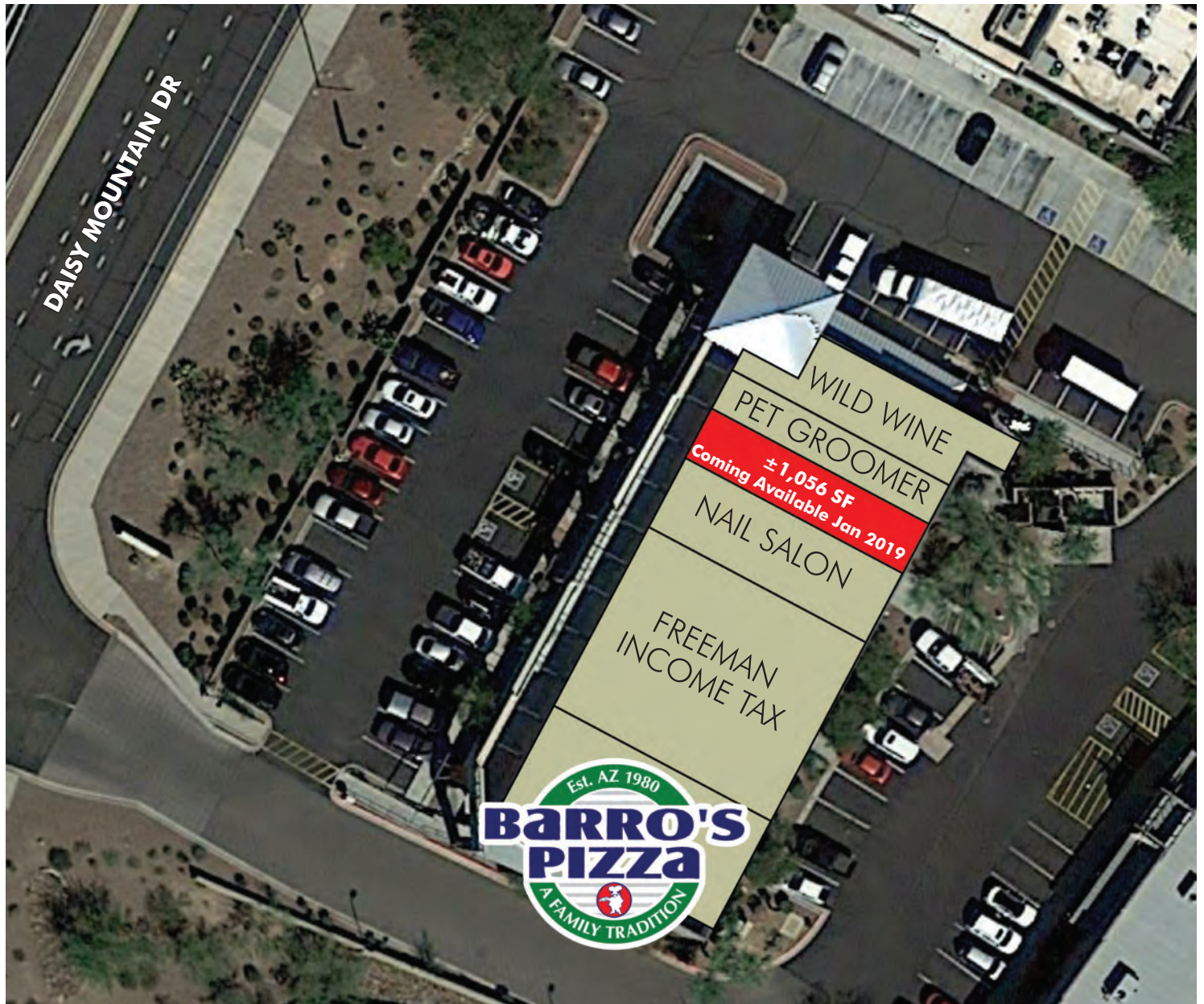
ndedona@pcaemail.com

The information contained herein has been obtained from sources believed reliable. While we do not doubt its accuracy, we have not verified it and make no guarantee, warranty or representation about it. It is your responsibility to independently confirm its accuracy and completeness. Any projections, opinions, assumptions or estimates used are for example only, and do not represent the current or future performance of the property. The value of this transaction to you depends on tax and other factors which should be evaluated by your tax, financial and legal advisors. You and your advisors should conduct a careful, independent investigation of the property to determine to your satisfaction the suitability of the property for your needs.

[75] SEPT 24, 2018

Last Space Available!

SEC Daisy Mountain Dr & Anthem Way | Phoenix, AZ



site plan not drawn to scale

For more information, please contact

Nick DeDonna

602-734-7208

ndedona@pcaemail.com



3131 E Camelback Rd, Ste 340 | Phoenix, AZ 85016

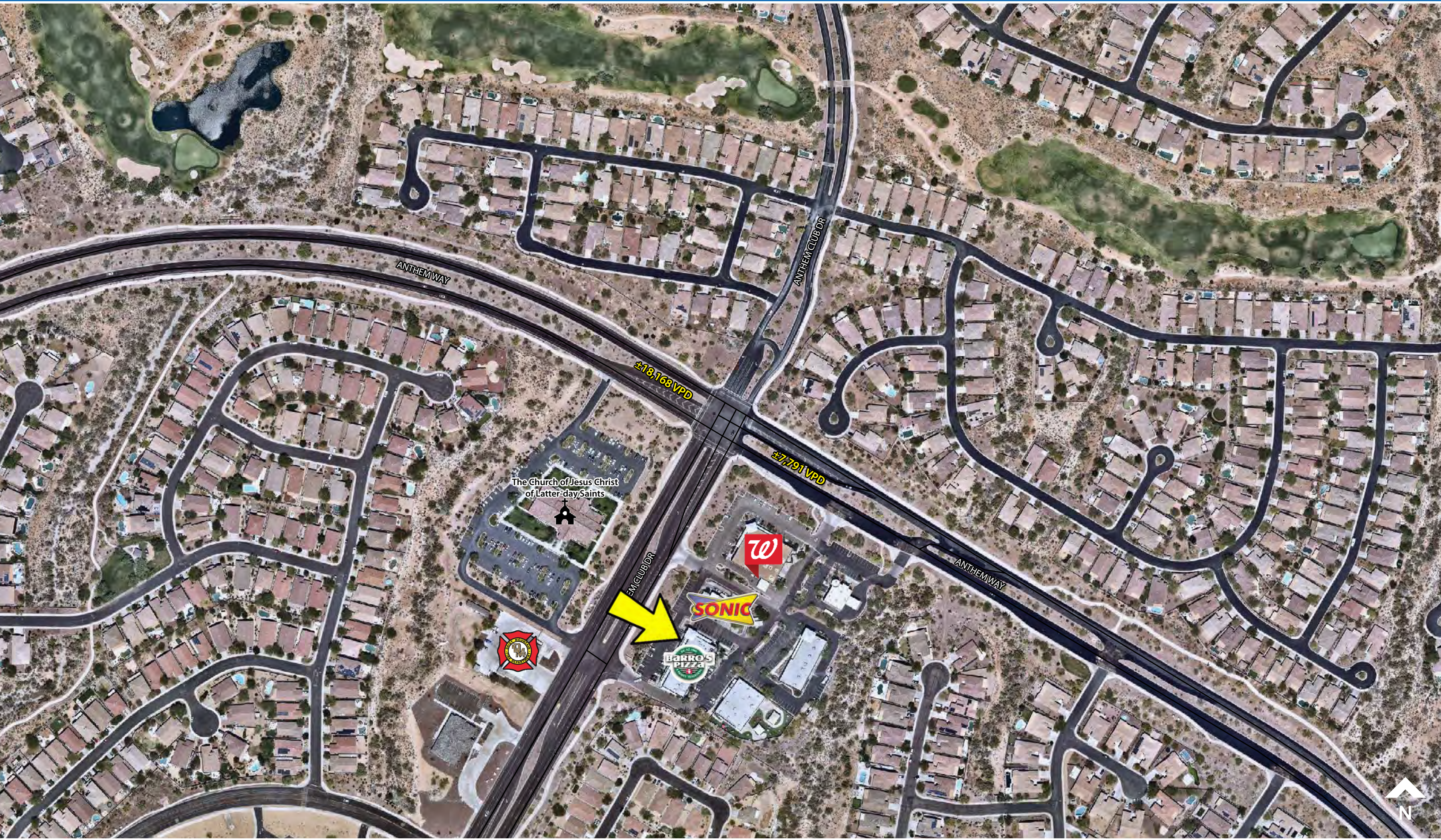
Phone: 602-957-9800 | Fax: 602-957-0889

www.phoenixcommercialadvisors.com

The information contained herein has been obtained from sources believed reliable. While we do not doubt its accuracy, we have not verified it and make no guarantee, warranty or representation about it. It is your responsibility to independently confirm its accuracy and completeness. Any projections, opinions, assumptions or estimates used are for example only, and do not represent the current or future performance of the property. The value of this transaction to you depends on tax and other factors which should be evaluated by your tax, financial and legal advisors. You and your advisors should conduct a careful, independent investigation of the property to determine to your satisfaction the suitability of the property for your needs.

[75] SEPT 24, 2018

SEC Daisy Mountain Dr & Anthem Way | Phoenix, AZ





MPC/Housing Data

- "Active"
- "Future"

State Route 74



One Page Summary

Daisy Mountain Dr & Anthem Way, Phoenix
 -112.11200141 33.8599249650001
 Rings: 1, 3, 5 mile radii

Prepared By Business Analyst Desktop
 Latitude: 33.859925
 Longitude: -112.112001

	1 mile	3 miles	5 miles
Population Summary			
2000 Total Population	376	4,144	11,212
2010 Total Population	8,013	30,803	49,425
2017 Total Population	8,593	34,322	56,005
2017 Group Quarters	0	2	1,549
2022 Total Population	9,077	36,923	60,962
2017-2022 Annual Rate	1.10%	1.47%	1.71%
2017 Total Daytime Population	6,129	24,797	41,086
Workers	1,228	6,629	12,389
Residents	4,901	18,168	28,697
Household Summary			
2000 Households	143	1,491	3,765
2000 Average Household Size	2.63	2.78	2.64
2010 Households	2,926	10,564	17,168
2010 Average Household Size	2.74	2.92	2.81
2017 Households	3,072	11,545	19,090
2017 Average Household Size	2.80	2.97	2.85
2022 Households	3,226	12,359	20,784
2022 Average Household Size	2.81	2.99	2.86
2017-2022 Annual Rate	0.98%	1.37%	1.71%
2010 Families	2,399	8,515	13,328
2010 Average Family Size	3.03	3.24	3.17
2017 Families	2,501	9,216	14,657
2017 Average Family Size	3.10	3.32	3.23
2022 Families	2,618	9,829	15,864
2022 Average Family Size	3.12	3.34	3.25
2017-2022 Annual Rate	0.92%	1.30%	1.60%
Housing Unit Summary			
2017 Housing Units	3,577	12,871	21,079
Owner Occupied Housing Units	68.4%	68.1%	68.0%
Renter Occupied Housing Units	17.5%	21.6%	22.6%
Vacant Housing Units	14.1%	10.3%	9.4%
Median Household Income			
2017	\$104,382	\$90,284	\$87,269
2022	\$110,339	\$98,956	\$95,607
Median Home Value			
2017	\$371,338	\$341,646	\$326,951
2022	\$418,462	\$393,143	\$374,953
Average Home Value			
2017	\$149,746	\$121,682	\$113,490
Per Capita Income			
2017	\$52,379	\$41,036	\$39,623
2022	\$57,250	\$45,332	\$43,964
Median Age			
2017	41.9	38.5	38.9
2022	42.7	38.9	39.2
2017 Population 25+ by Educational Attainment			
Total	5,830	22,267	37,580
Less than 9th Grade	1.2%	1.6%	1.7%
9th - 12th Grade, No Diploma	0.7%	2.2%	2.8%
High School Graduate	14.5%	17.3%	16.8%
GED/Alternative Credential	1.1%	2.4%	3.5%
Some College, No Degree	29.1%	27.1%	29.0%
Associate Degree	8.2%	9.9%	9.9%
Bachelor's Degree	31.8%	28.4%	25.9%
Graduate/Professional Degree	13.4%	11.2%	10.4%

Data Note: Household population includes persons not residing in group quarters. Average Household Size is the household population divided by total households. Persons in families include the householder and persons related to the householder by birth, marriage, or adoption. Per Capita Income represents the income received by all persons aged 15 years and over divided by the total population.

Source: U.S. Census Bureau, Census 2010 Data. Esri forecasts for 2017 and 2022

September 18, 2018

Made with Esri Business Analyst