



FOR LEASE - UP TO 79,105 SF AVAILABLE

# METROPLEX TECH CENTER I

3000 KELLWAY DRIVE | CARROLLTON, TEXAS 75006

**CONTACT**

**TIMOTHY VELER, CCIM**

972.774.2541

[timothy.veler@transwestern.com](mailto:timothy.veler@transwestern.com)

**ROBERT DEPTULA, PRINCIPAL**

214.446.4517

[robert.deptula@transwestern.com](mailto:robert.deptula@transwestern.com)

FOR LEASE - UP TO 79,105 SF AVAILABLE

# METROPLEX TECH CENTER I

3000 KELLWAY DRIVE | CARROLLTON, TEXAS 75006

**TRANSWESTERN®**

5001 Spring Valley Road  
Suite 400-W  
Dallas Texas 75244

T 972.774.2500  
transwestern.com



## SIZE

- 2,500 SF Live Data Center; plus:
- 2,500 SF Data Center expansion that is pre-wired
- Raised Floor 18"
- Tray System above and below rack locations
- Drop ceiling with anti static tiles
- Sealed space for low dirt ingress
- Separate dedicated power room and IDF

## POWER FEED

- Incoming from building with a fast start 1.2MW genset
- Split in power room to feed dual UPS's 250W each currently with newer batteries
- Redundant feed through EPO's to distribution in DC Room
- 24 Rack locations ready with dual 208v/30A L6-30 feeds
- 1500 KVA Cummins diesel with 1,000 gallon tank 800 KVA load allowed per Lease

## FIRE

- Dedicated FM200 in the live DC with a spare tank ready to use in the secondary
- FM200 in the IDF
- 2 stage dry pipe wet system in the power room space

## COOLING

- 3-20 Ton Liebert units in the datacenter
- Building cooling from (50T Trane RTU unit for the office space and IDF)
- Power room has dedicated 5 ton split system

## CONTACT

**TIMOTHY VELER**

972.774.2541

timothy.veler@transwestern.com

**ROBERT DEPTULA**

214.446.4517

robert.deptula@transwestern.com

The information provided herein was obtained from sources believed reliable; however, Transwestern makes no guarantees, warranties or representations as to the completeness or accuracy thereof. The presentation of this property is submitted subject to errors, omissions, change of price or conditions, prior sale or lease, or withdrawal without notice. Copyright © 2019 Transwestern.



FOR LEASE - UP TO 79,105 SF AVAILABLE

# METROPLEX TECH CENTER I

3000 KELLWAY DRIVE | CARROLLTON, TEXAS 75006

## CONTACT

**TIMOTHY VELER, VICE PRESIDENT**

972.774.2541

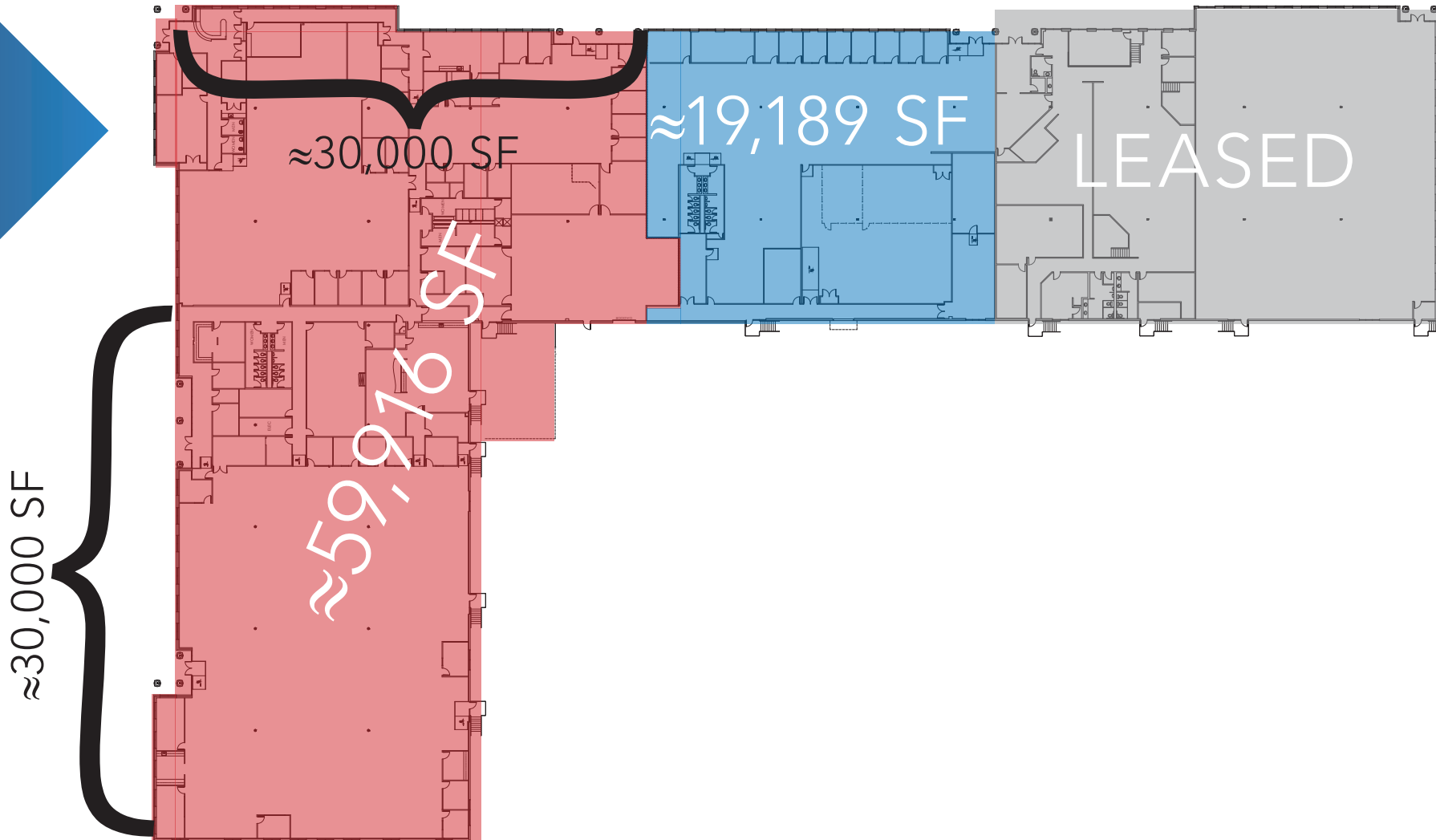
[timothy.veler@transwestern.com](mailto:timothy.veler@transwestern.com)

**ROBERT DEPTULA, PRINCIPAL**

214.446.4517

[robert.deptula@transwestern.com](mailto:robert.deptula@transwestern.com)

## FLOOR PLAN - UP TO 79,105 SF



FOR LEASE - UP TO 79,105 SF AVAILABLE

# METROPLEX TECH CENTER I

3000 KELLWAY DRIVE | CARROLLTON, TEXAS 75006

INTERIOR PHOTOS - UP TO 79,105 SF

## CONTACT

**TIMOTHY VELER, VICE PRESIDENT**

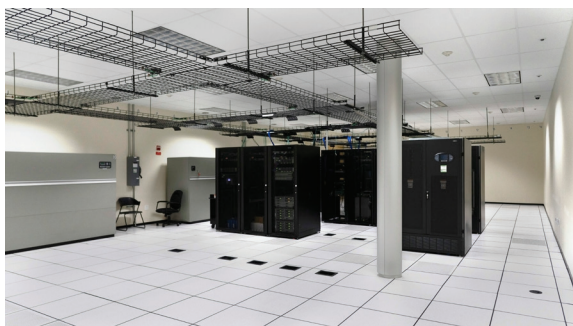
972.774.2541

[timothy.veler@transwestern.com](mailto:timothy.veler@transwestern.com)

**ROBERT DEPTULA, PRINCIPAL**

214.446.4517

[robert.deptula@transwestern.com](mailto:robert.deptula@transwestern.com)



The information provided herein was obtained from sources believed reliable; however, Transwestern makes no guarantees, warranties or representations as to the completeness or accuracy thereof. The presentation of this property is submitted subject to errors, omissions, change of price or conditions, prior sale or lease, or withdrawal without notice. Copyright © 2019 Transwestern.