

# Lake Merritt Plaza

1999 Harrison Street  
Oakland, CA 94612



LAKE MERRITT  
PLAZA

**AVISON  
YOUNG**



CLARION PARTNERS

# Available Space



LAKE MERRITT  
PLAZA

## Suite 1420 - 5,281 rsf

Double door entry, glass conference room, multiple private offices, views of Oakland and San Francisco skylines.

## Suite 1350 - 4,932 rsf

Double door entry with Oakland City and San Francisco views.

## Suite 1200 - 7,574 rsf

*Available 6/1/18*

Premier space with a double entry and Lake Merritt Views.

## Property Overview

Lake Merritt Plaza is one of the highest quality buildings in the East Bay, with a striking architectural design and located in the popular Uptown District of Downtown Oakland.

On the shores of beautiful Lake Merritt, the 27-story 1999 Harrison Street has stunning panoramic views of the lake, the Oakland and Berkeley hills, San Francisco and the Oakland city skyline.

## Highlights

- Adjacent to 19th Street Uptown BART station
- Newly renovated lobby
- Newly renovated Destination Dispatch elevator service & systems
- New retail renovation underway to include lockers & showers, secure bike parking & repair station, expanded outside seating areas and new food services
- Common area & restroom renovations underway
- On-site property management & engineering

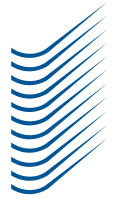
# Building Photos

AVAILABLE SPACE

BUILDING PHOTOS

NEIGHBORS & AMENITIES

FLOOR PLANS



LAKE MERRITT PLAZA

Photos

Aerial



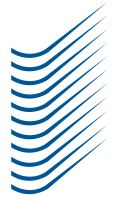
# Building Photos

AVAILABLE  
SPACE

BUILDING  
PHOTOS

NEIGHBORS &  
AMENITIES

FLOOR  
PLANS



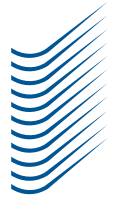
LAKE MERRITT  
PLAZA

Photos

Aerial



# Neighbors & Amenities



LAKE MERRITT  
PLAZA



- Notable Neighbors**
  - 1 Pandora
  - 2 Fluid
  - 3 Uber
  - 4 The Hive
- Uptown Icons & Entertainment**
  - 5 Fox Theater
  - 6 Paramount Theater
- Bars**
  - 7 Drexl
  - 8 Dogwood
  - 9 Make Westing
  - 10 Woods Bar
  - 11 Mad Oak
  - 12 Layover
  - 13 Luka's Taproom & Lounge
  - 14 Mau
- Restaurants & Lunch Bites**
  - 15 Drake's Brewery
  - 16 Flora
  - 17 Duende
  - 18 Parlour
  - 19 Ike's Place
  - 20 Izzy's Steaks and Chops
  - 21 The Gastropig
  - 22 Mockingbird
- Coffee**
  - 23 Modern Coffee
  - 24 Aroma Café
  - 25 Awaken Café
  - 26 City Lights Cafe
  - 27 Starbucks

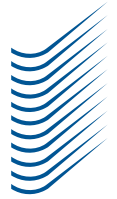
# Floor Plan

AVAILABLE SPACE

BUILDING PHOTOS

NEIGHBORS & AMENITIES

FLOOR PLANS



LAKE MERRITT  
PLAZA

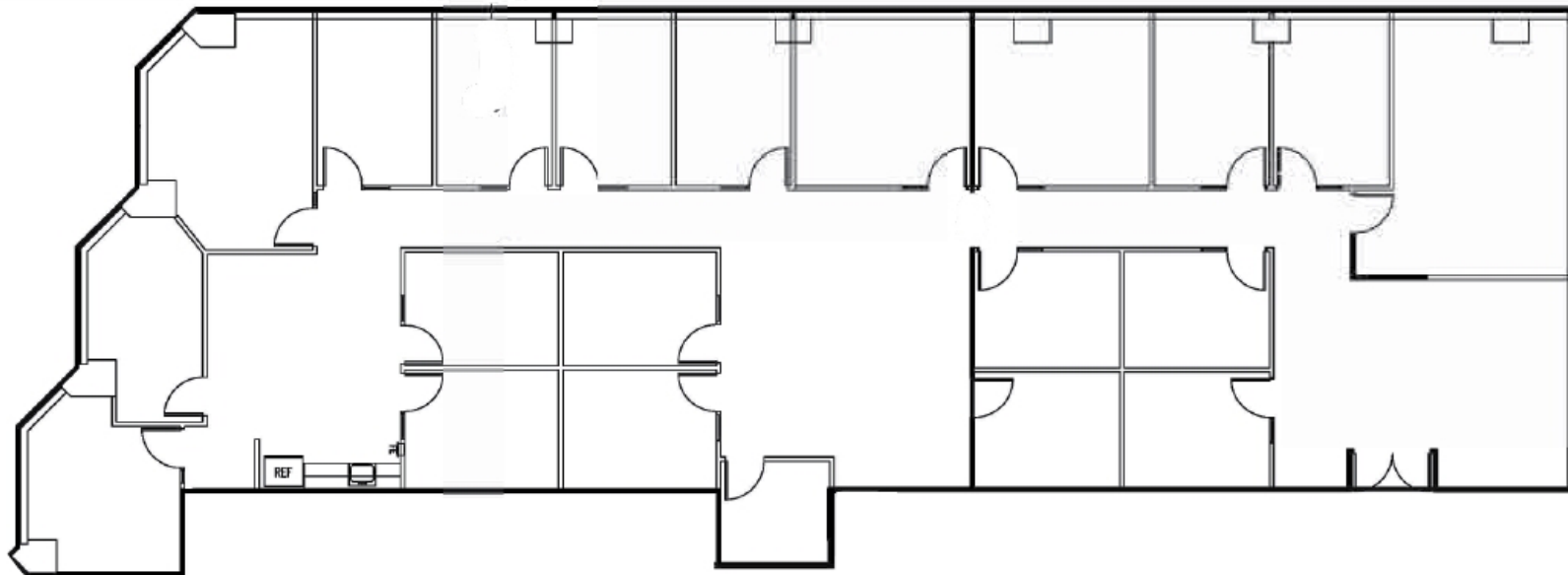
Suite 1420

Suite 1350

Suite 1200

## Suite 1420 - 5,281 rsf

Double door entry, glass conference room, multiple private offices, views of Oakland and San Francisco skylines.



Charles F. Allen, LEED AP  
Principal, Managing Director  
RE Lic #01158267  
charlie.allen@avisonyoung.com  
510.254.4260

Anthony Shell, LEED® AP  
Principal  
RE Lic #01743033  
anthony.shell@avisonyoung.com  
510.254.4263

Amber Merrigan  
Associate  
RE Lic #01905162  
amber.merrigan@avisonyoung.com  
510.254.4267

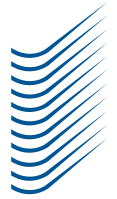
# Floor Plan

AVAILABLE SPACE

BUILDING PHOTOS

NEIGHBORS & AMENITIES

FLOOR PLANS



LAKE MERRITT  
PLAZA

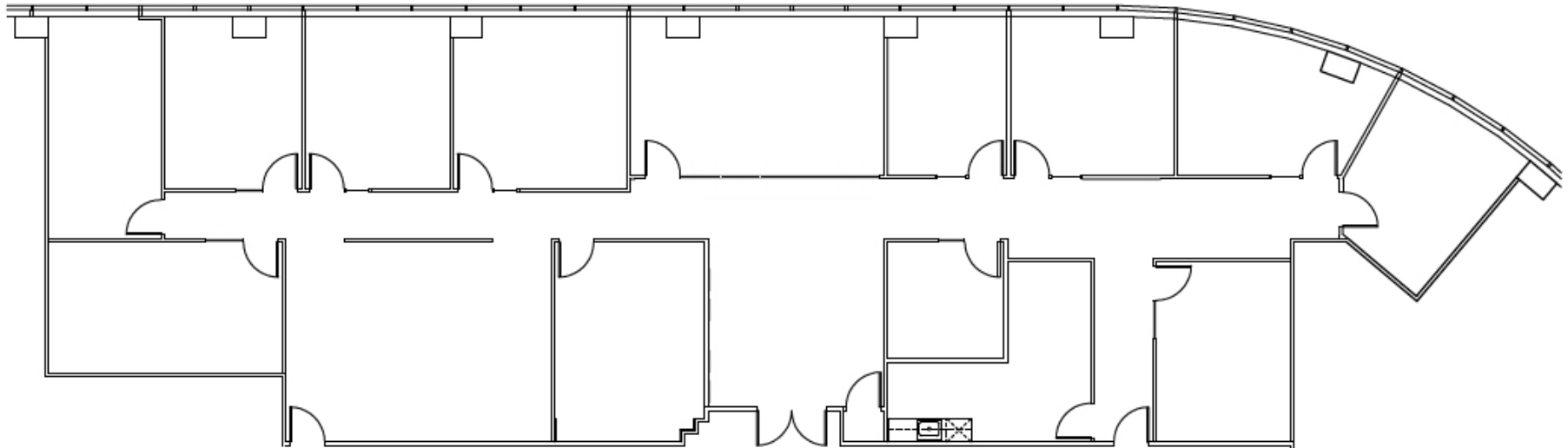
Suite 1420

**Suite 1350**

Suite 1200

## Suite 1350 - 4,932 rsf

Double door entry with Oakland City and San Francisco views.



Charles F. Allen, LEED AP  
Principal, Managing Director  
RE Lic #01158267  
charlie.allen@avisonyoung.com  
510.254.4260

Anthony Shell, LEED® AP  
Principal  
RE Lic #01743033  
anthony.shell@avisonyoung.com  
510.254.4263

Amber Merrigan  
Associate  
RE Lic #01905162  
amber.merrigan@avisonyoung.com  
510.254.4267

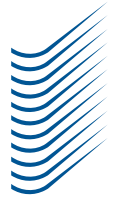
# Floor Plan

AVAILABLE SPACE

BUILDING PHOTOS

NEIGHBORS & AMENITIES

FLOOR PLANS



LAKE MERRITT  
PLAZA

Suite 1420

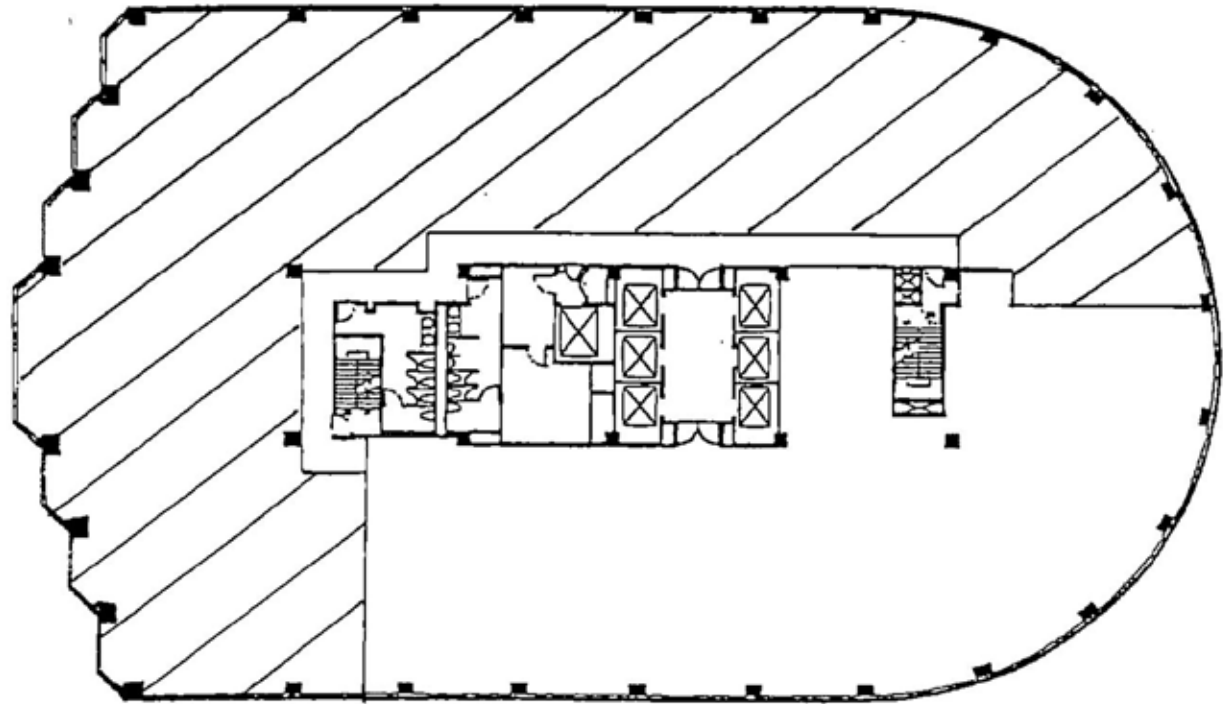
Suite 1350

**Suite 1200**

## Suite 1200 - 7,574 rsf

*Available 6/1/18*

Premier space with a double entry



Charles F. Allen, LEED AP  
Principal, Managing Director  
RE Lic #01158267  
charlie.allen@avisonyoung.com  
510.254.4260

Anthony Shell, LEED® AP  
Principal  
RE Lic #01743033  
anthony.shell@avisonyoung.com  
510.254.4263

Amber Merrigan  
Associate  
RE Lic #01905162  
amber.merrigan@avisonyoung.com  
510.254.4267