

FOR SUBLEASE

BRYAN TOWER

2001 BRYAN STREET, SUITE 2050
DALLAS, TX 75201



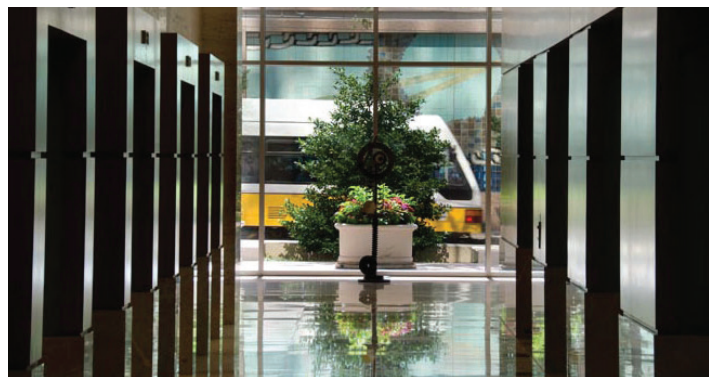
SUBLEASE FEATURES

- + 13,891 SF
- + 20th Floor / Suite 2050
- + Term thru July 31, 2018
- + **\$10.00 /SF + NNN**
- + Est. NNN = \$8.06 /SF
- + Offices on glass
- + Open work areas
- + Kitchen/break Area
- + Large conference room with views
- + Furniture negotiable



BUILDING FEATURES

- + Four Star, Class A building
- + Skybridge connects to fitness, Marriott and Sheraton Hotels, Plaza of the Americas, restaurants, shops, and services
- + On Trolley stop and DART stop
- + Conference room on 21st floor
- + Food service / On-site sundry shop
- + No charge after hours HVAC
- + Klyde Warren Park and Arts District within 2 blocks

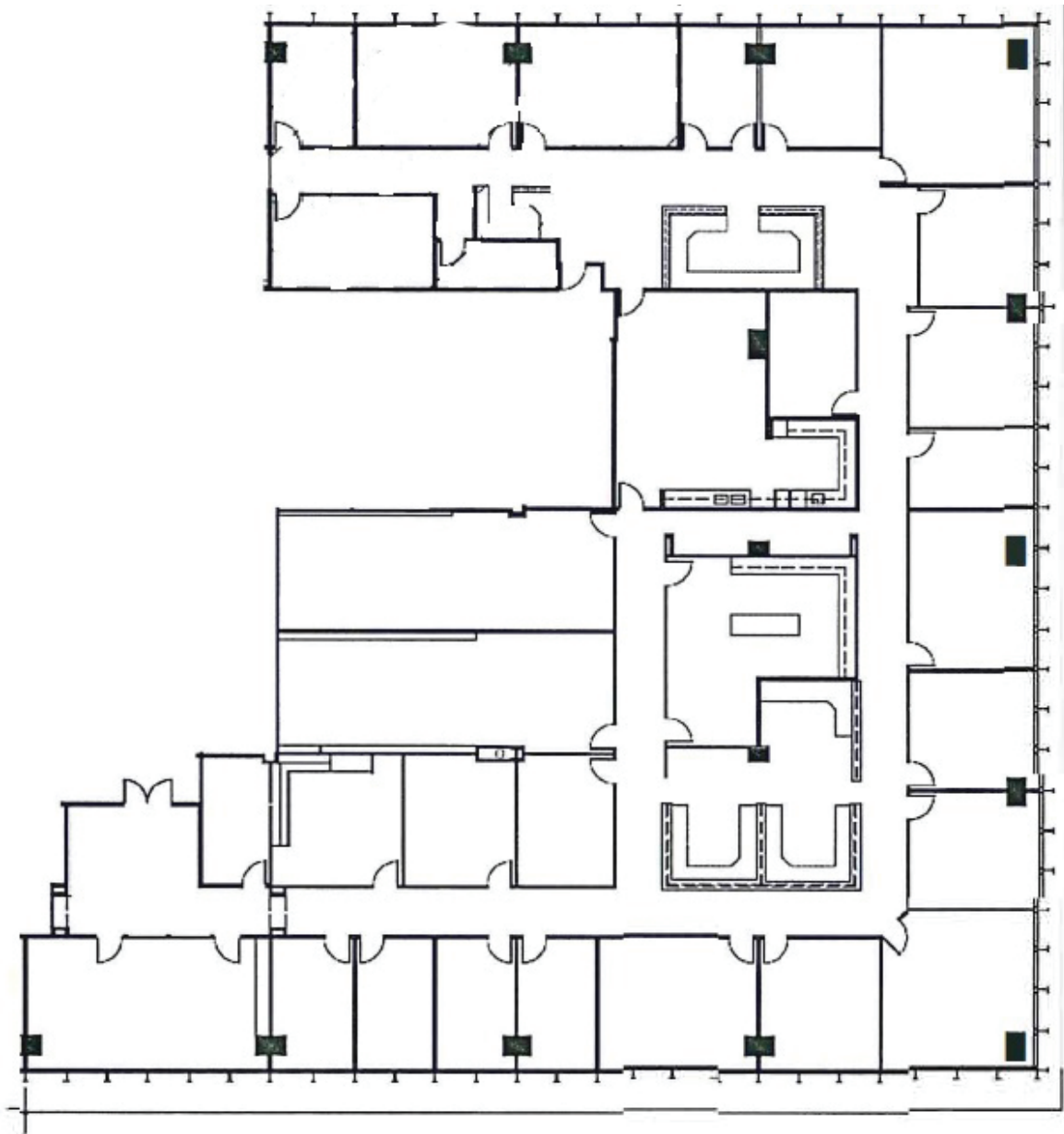


www.cbre.com/dallas

CBRE

BRYAN TOWER

2001 BRYAN STREET, SUITE 2050
DALLAS, TX 75201



BRYAN TOWER

2001 BRYAN STREET, SUITE 2050
DALLAS, TX 75201



PHOTOS



CONTACT US

REBECCA SMITH

Vice President
+1 214 979 6550
rebecca.smith@cbre.com

CHELBY SANDERS

Senior Vice President
+1 214 979 6125
chelby.sanders@cbre.com

JOSH WHITE

Executive Vice President
+1 214 979 6198
josh.white@cbre.com

© 2017 CBRE, Inc. This information has been obtained from sources believed reliable. We have not verified it and make no guarantee, warranty or representation about it. Any projections, opinions, assumptions or estimates used are for example only and do not represent the current or future performance of the property. You and your advisors should conduct a careful, independent investigation of the property to determine to your satisfaction the suitability of the property for your needs. Photos herein are the property of their respective owners and use of these images without the express written consent of the owner is prohibited.

CBRE