

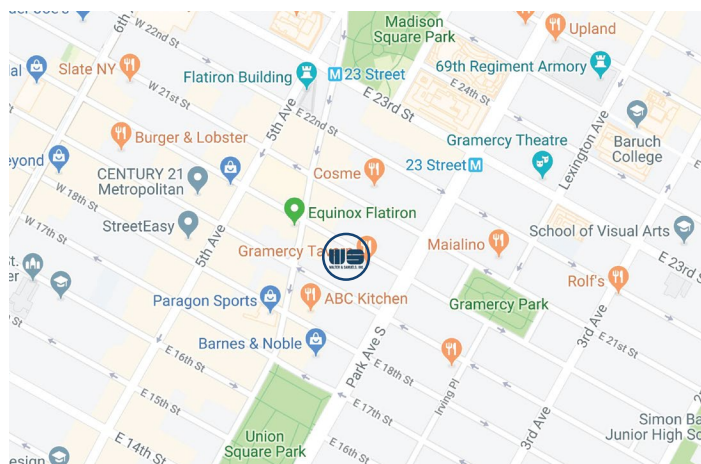
## EAST 30 TWENTIETH



## The Gabay Building

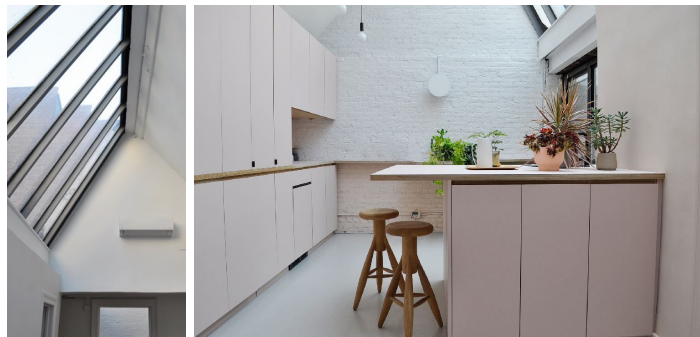
Address	30 East 20th Street
Submarket	Gramercy Park
Cross Streets	Broadway & Park Avenue
Available Space	1,750 RSF
Stories	7
Asking Price	\$65.00
Conditions	White Box
Term	5 to 10 Years

## Map



## Property Highlights

- Exposed Brick Walls
- Beautiful Lighting
- New Wood Floor
- Exposed Ceilings
- 24 hour Access
- Premier Locations
- Ample Storage Space
- 3 Large Skylights
- Full Wet Pantry
- Private Bathroom



For More Information Contact Exclusive Agents:



Member  
**REBNY**  
REAL ESTATE BOARD OF NEW YORK

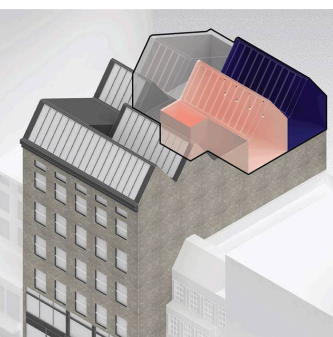
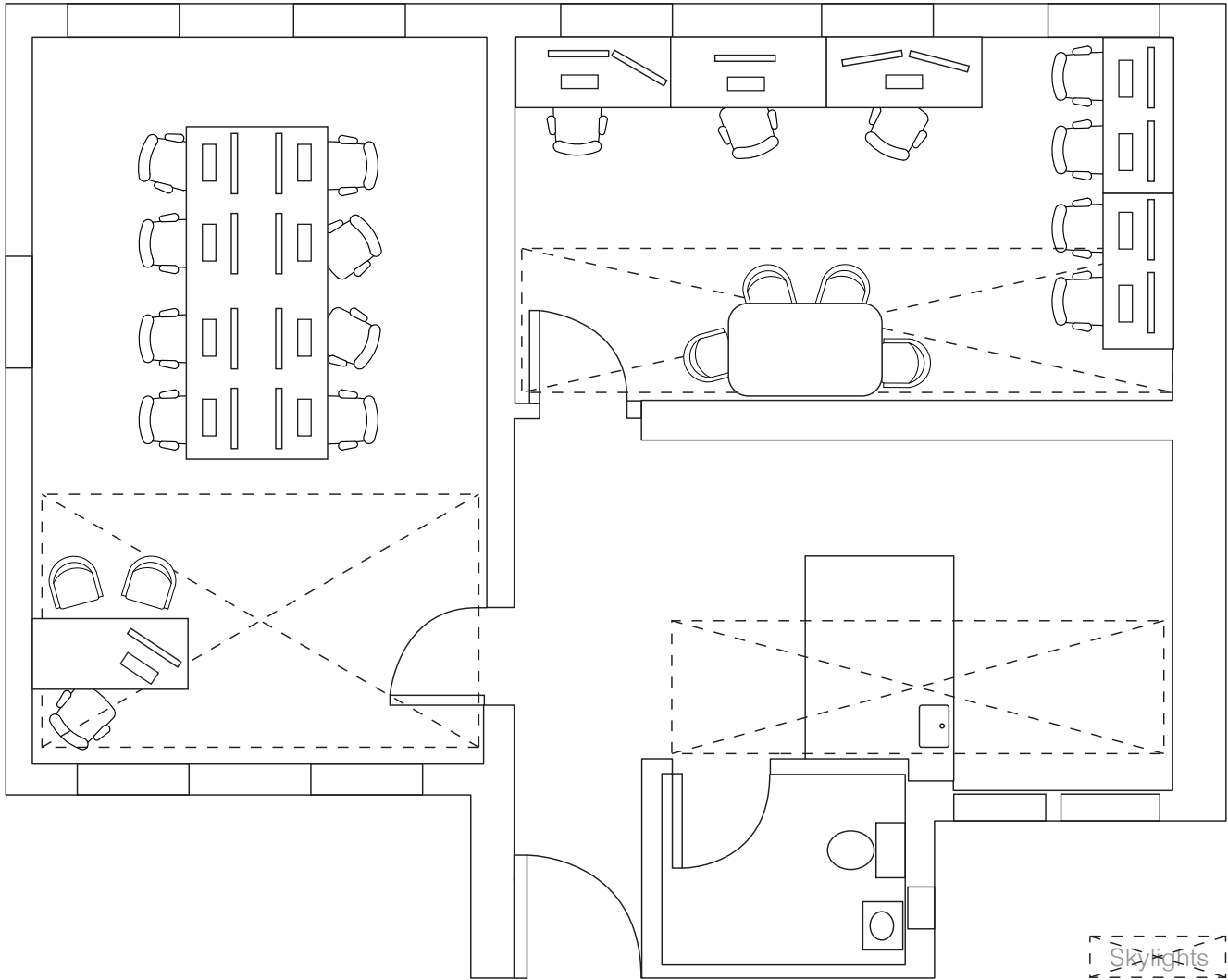
**TONY BUILDER**  
Managing Director - Leasing  
O. 212.696.7123  
abuilder@walter-samuels.com

**MARK DAVIS**  
Director  
O. 212.696.7125  
mdavis@walter-samuels.com



# EAST 30<sup>TH</sup> TWENTIETH

Floor Plan 1,750 RSF



For More Information Contact Exclusive Agents:



Member  
**REBNY**  
REAL ESTATE BOARD OF NEW YORK

**TONY BUILDER**

Managing Director - Leasing  
O. 212.696.7123  
abuilder@walter-samuels.com

**MARK DAVIS**

Director  
O. 212.696.7125  
mdavis@walter-samuels.com

