

# Commons Professional Building

1200 112th Ave NE, Bellevue, WA



**FOR LEASE**

New Market Ready Medical Space

**LISTING AGENT**

**Keith Honsberger**  
425.450.1107  
keithh@kiddermathews.com

**km** Kidder  
Mathews



# Commons Professional Building

1200 112th Ave NE, Bellevue, WA

## Property Information

Excellent visibility / access to I-405

---

Approx. one block from Overlake Hospital  
Medical Center

---

Suite C-255 (1,464 RS) new market ready medical space

---

Surface and covered parking 4.5 stalls / 1,000 SF

---

Fully sprinklered buildings

---

\$7-8 million renovation to convert to medical use,  
including new HVAC, building exterior, signage,  
common area finishes

---



### LISTING AGENT

**Keith Honsberger**  
425.450.1107  
keithh@kiddermathews.com

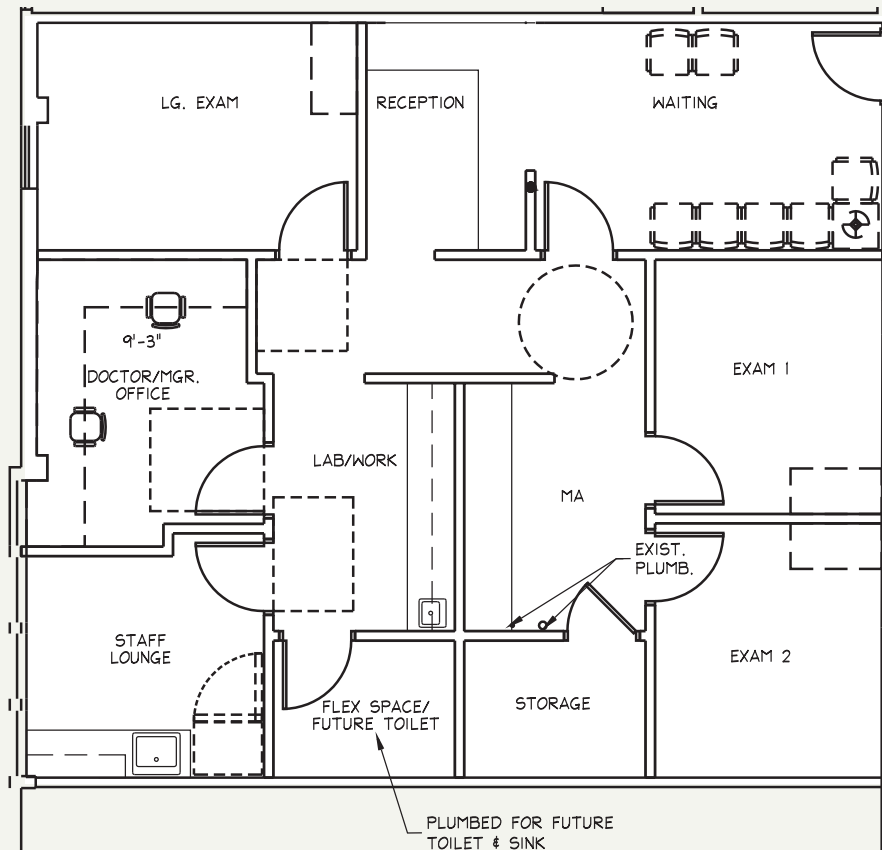


# Commons Professional Building

1200 112th Ave NE, Bellevue, WA

## Available Space:

BUILDING C-255 | 1,464 RSF



BUILDING C-255 | 1,464 RSF



LISTING AGENT

**Keith Honsberger**  
425.450.1107  
keith@kiddermathews.com

