

Aggressively Priced- Available Now

Suites 2 And 3 Available At The Historic Metcalf

**100 S. Orange Ave
Orlando, FL 32801**

Description

The Historic Metcalf Building Is A Beautiful Chicago Brick Style Building In the Heart of Downtown Orlando. It Was One Of Orlando's First Trio Of "High Rise" Buildings Constructed In 1923 And Offers 9 Floors Of Premium Office Space, First Floor Retail And Sub-Street Level Restaurant/Entertainment Space.

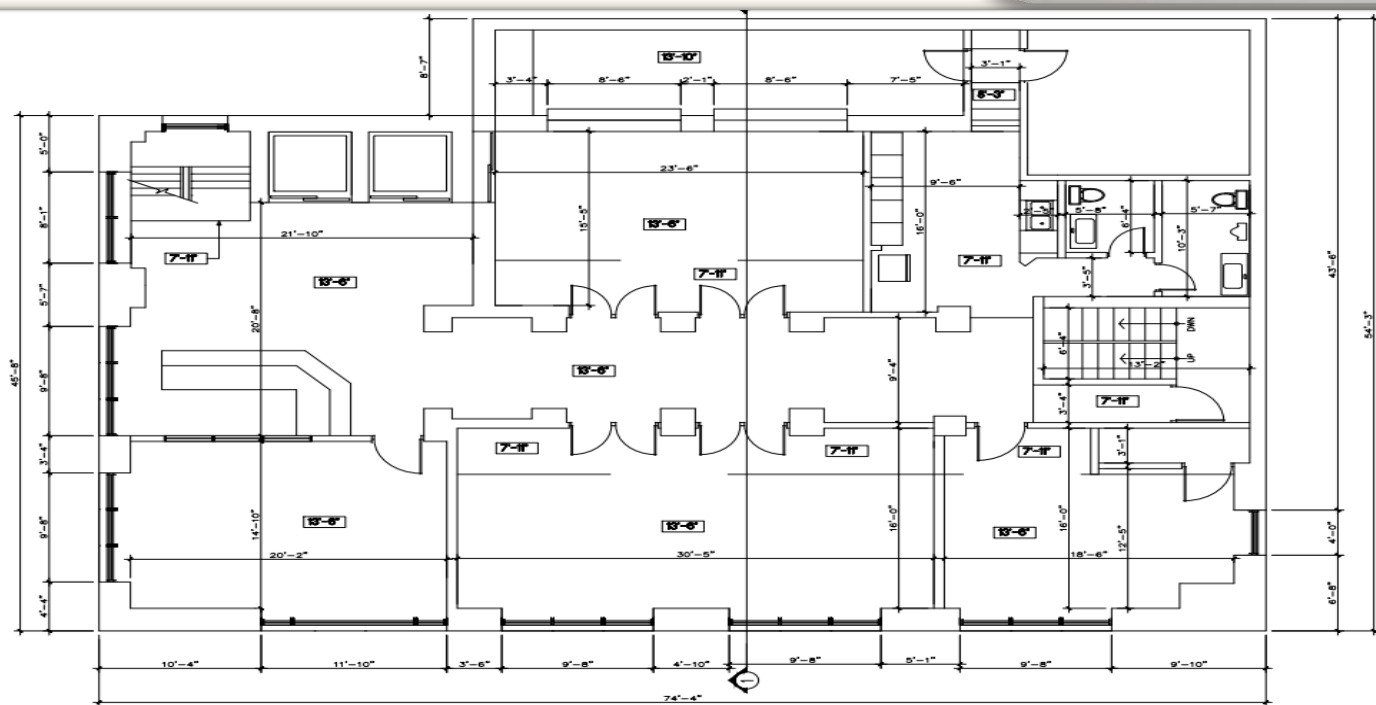
This Unique B+ Asset Is On The Corner of Pine St. and Orange Ave, arguably the Very Heart Of Downtown Orlando.

One Of This Buildings Most Unique Characteristics Are Its 3,483 sqft FULL FLOOR Suites Which Provide Small To Mid-Sized Firms A Rare Opportunity To Obtain Private FULL FLOOR Suites In The Heart Of The City As Opposed To Sharing Floors And Restrooms With Other Firms.

Elevators Open Directly Into Suite Where Each Suite Has Its Own Lobby, Reception, And Restroom Facilities On Each Floor.

The Historic Metcalf Building Is One Of Downtown Orlando's Only Truly Boutique Office Buildings And In A City Of Many Stately Buildings It Continues To Stand Among The Most Sought After Destinations For Those Seeking "High Character Space" In The Very Heart Of A World Class City.

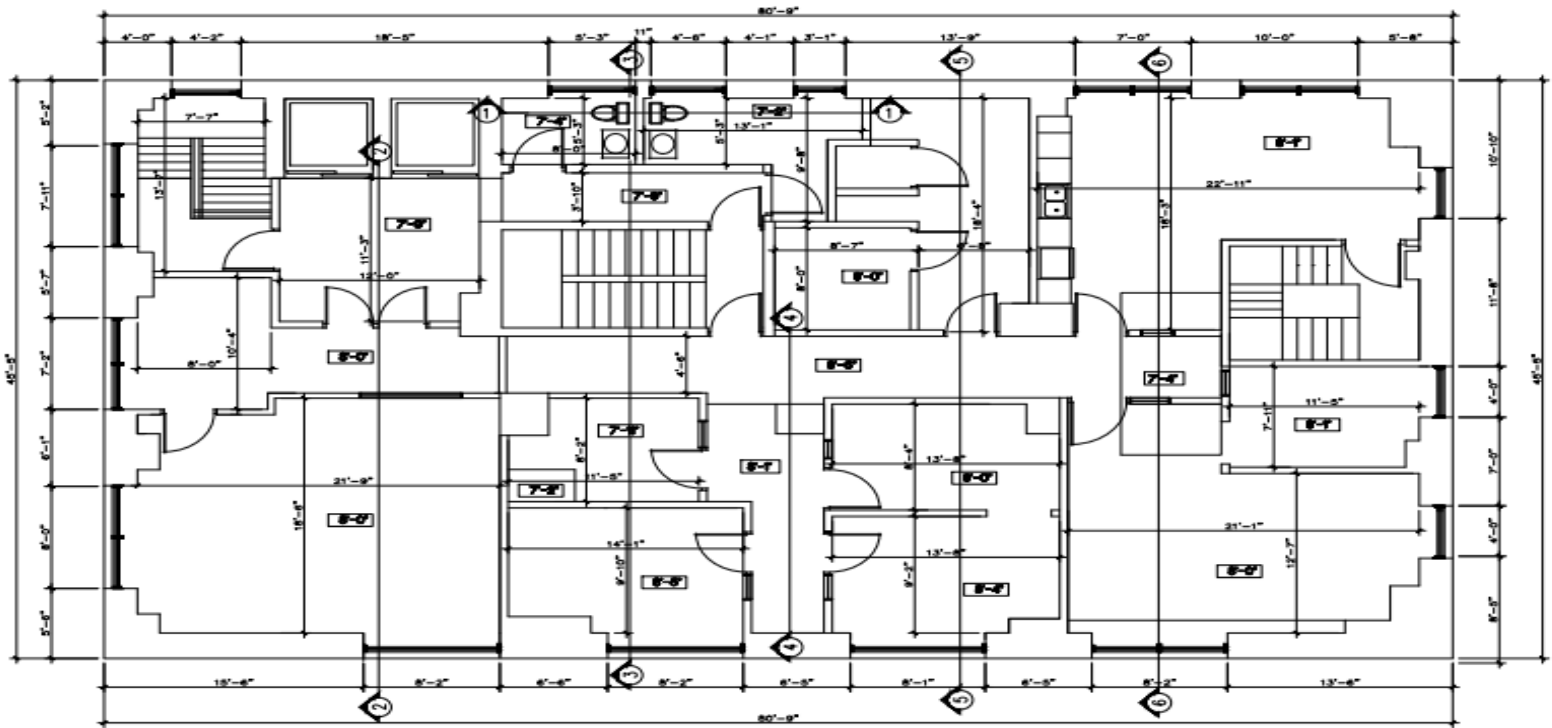




SECOND FLOOR PLANS



Offices, Kitchen, And Conference Rooms



THIRD FLOOR PLANS

