

“Turn Key” Restaurant For Sale

4724 George Washington Memorial Highway
York County, Virginia



FOR ADDITIONAL INFORMATION, PLEASE CONTACT:

Campana Waltz Commercial Real Estate, LLC
Tom Waltz

11832 Fishing Point Drive, Suite 400
Newport News, Virginia 23606
757.327.0333

Tom@CampanaWaltz.com
www.CampanaWaltz.com

Campana Waltz
Commercial Real Estate, LLC

*This information was obtained from sources deemed to be reliable, but is not warranted.
This offer subject to errors and omissions, or withdrawal, without notice.*

For Sale

4724 George Washington Memorial Highway York County, Virginia



*This information was obtained from sources deemed to be reliable, but is not warranted.
This offer subject to errors and omissions, or withdrawal, without notice.*

Campana Waltz
Commercial Real Estate, LLC

FOR SALE
4724 George Washington Memorial Highway
York County, Virginia

- Location:** 4724 George Washington Memorial Highway, York County
- Description:** The real Property is an attractive 1-story full service restaurant building containing approximately 6,244 square feet and accommodates 198 seats for patrons.
New roof and HVAC systems.
- Land Area:** 1.88 acres
- Sales Price:** \$1,975,000.00 – the Sales Price includes furniture, fixtures and equipment (approximately \$400,000.00 in value – detailed list to be provided during due diligence).
- Lease:** The Ownership will entertain a lease also.
- Parking:** 103 parking spaces
- Traffic Count:** 35,000
- Zoning:** GB – General Business. Multiple allowable uses by right.
- General Information:**
- Rare opportunity to own a turnkey restaurant in a great location
 - Road frontage on recently widened Route 17
 - Well established area
 - Surrounded by numerous retailers and solid residential neighborhoods
- Also included:**
- Aerial Maps
 - Location Map
 - Site Plan
 - List of uses which are allowed by right

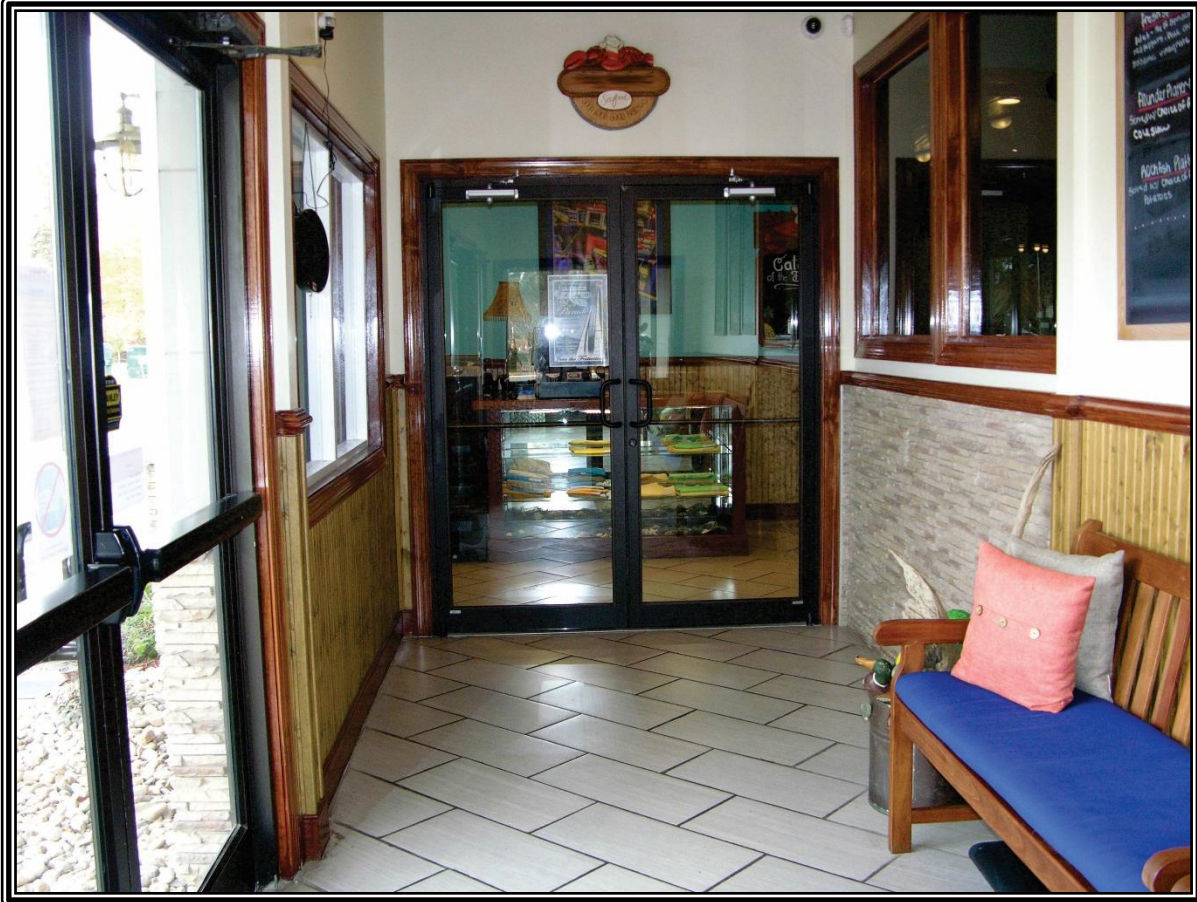
For Additional Information, Please Contact:

Tom Waltz
Campana Waltz Commercial Real Estate, LLC
11832 Fishing Point Drive, Suite 400
Newport News, Virginia, 23606
757.327.0333

Tom@CampanaWaltz.com
www.CampanaWaltz.com



*This information was obtained from sources deemed to be reliable, but is not warranted.
This offer subject to errors and omissions or withdrawal without notice.*



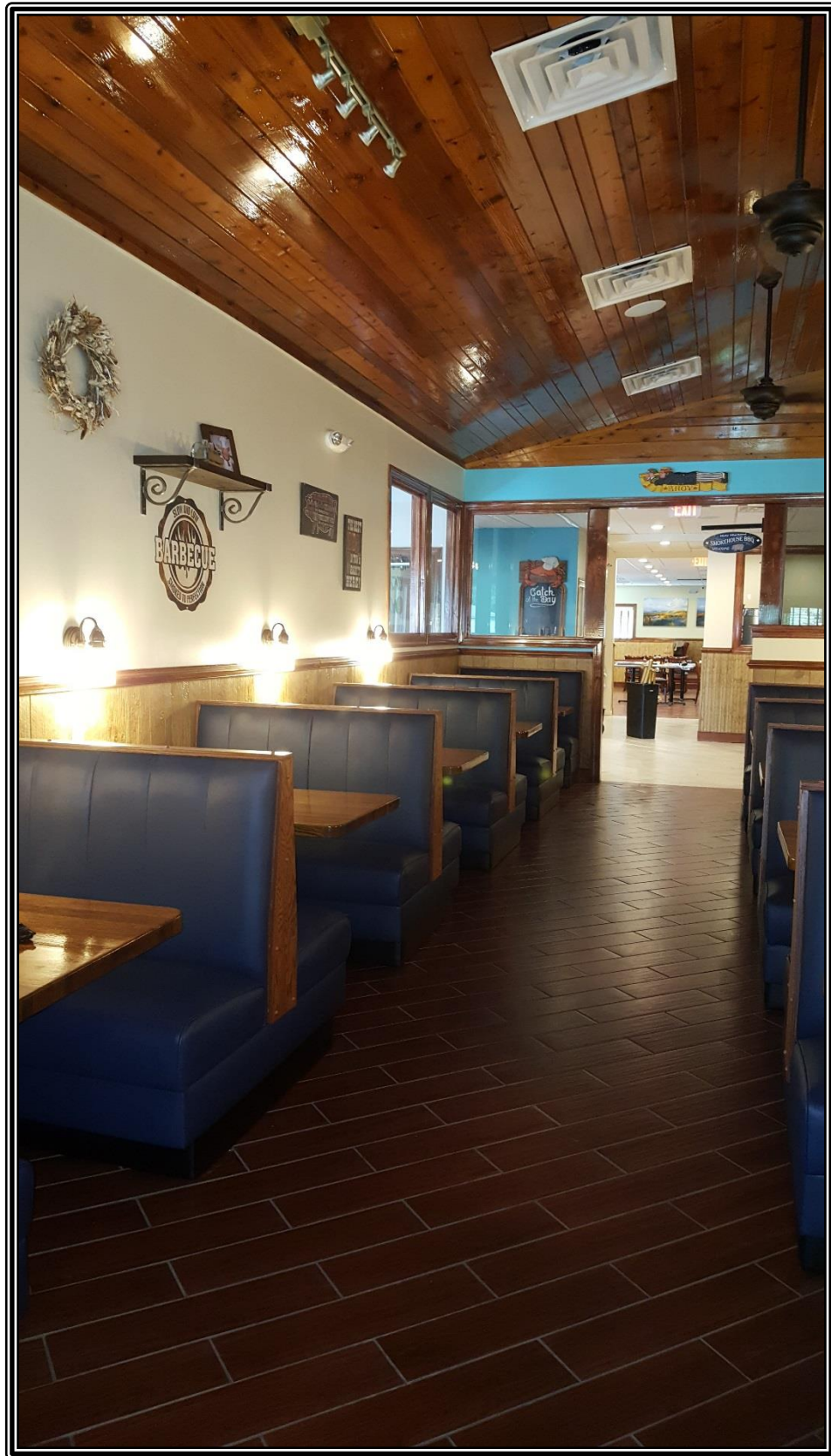
Foyer



Dining Room

*This information was obtained from sources deemed to be reliable, but is not warranted.
This offer subject to errors and omissions, or withdrawal, without notice.*

Campana Waltz
Commercial Real Estate, LLC



Interior
Dining
Room

*This information was obtained from sources deemed to be reliable, but is not warranted.
This offer subject to errors and omissions, or withdrawal, without notice.*

Campana Waltz
Commercial Real Estate, LLC

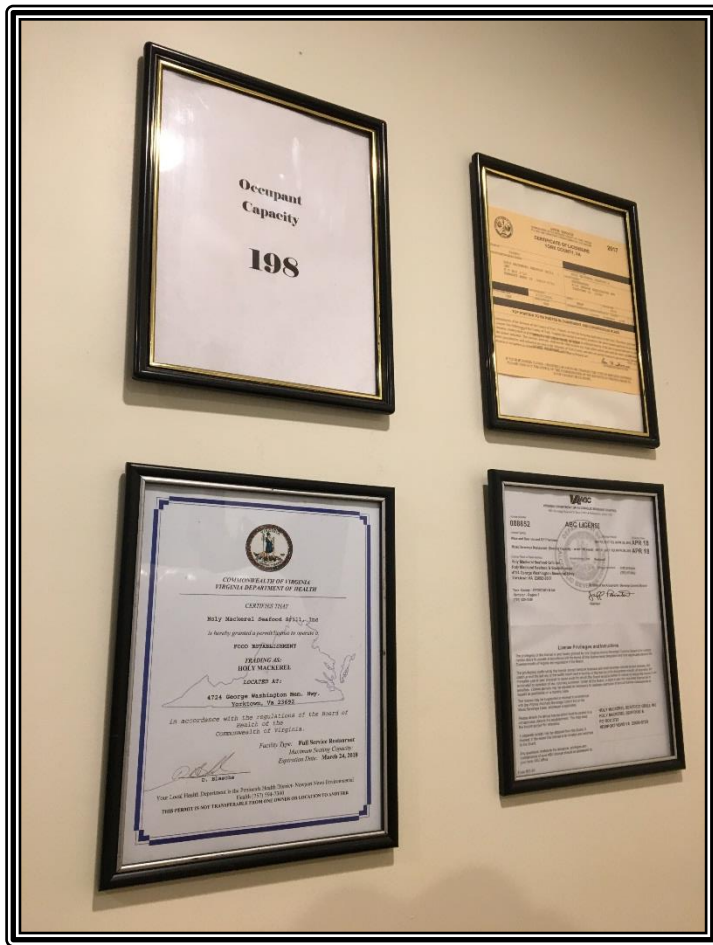
Dining Room



Dining Room

*This information was obtained from sources deemed to be reliable, but is not warranted.
This offer subject to errors and omissions, or withdrawal, without notice.*

Campana Waltz
Commercial Real Estate, LLC



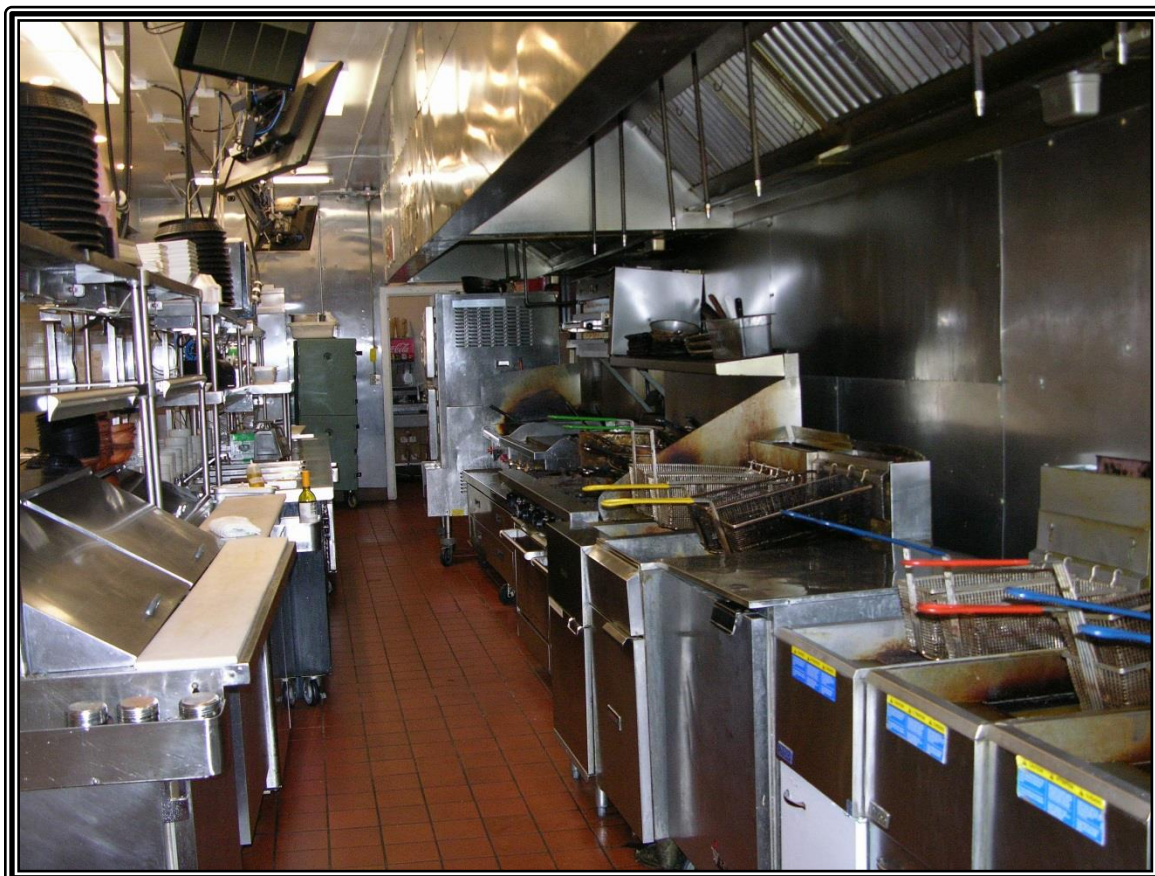
Bar

*This information was obtained from sources deemed to be reliable, but is not warranted.
This offer subject to errors and omissions, or withdrawal, without notice.*

Campana Waltz
Commercial Real Estate, LLC



Kitchen



Kitchen

*This information was obtained from sources deemed to be reliable, but is not warranted.
This offer subject to errors and omissions, or withdrawal, without notice.*

Campana Waltz
Commercial Real Estate, LLC

Pantry



Walk-in
Refrigerator



*This information was obtained from sources deemed to be reliable, but is not warranted.
This offer subject to errors and omissions, or withdrawal, without notice.*

Campana Waltz
Commercial Real Estate, LLC

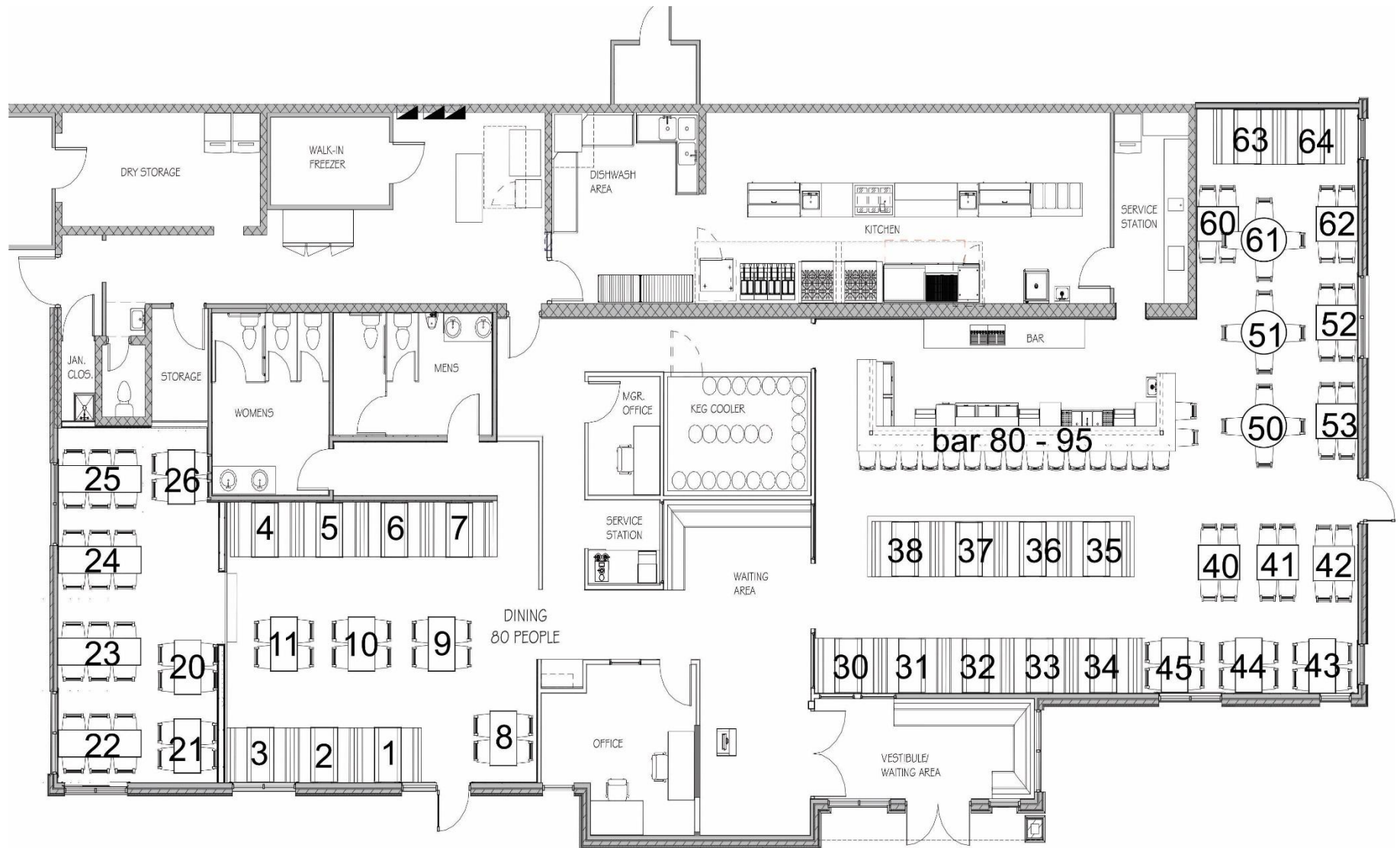


Freezer

*This information was obtained from sources deemed to be reliable, but is not warranted.
This offer subject to errors and omissions, or withdrawal, without notice.*

Campana Waltz
Commercial Real Estate, LLC

4724 George Washing Memorial Highway, Yorktown, Virginia



Floor Plan

*This information was obtained from sources deemed to be reliable, but is not warranted.
This offer subject to errors and omissions, or withdrawal, without notice.*

For Sale
4724 George Washington Memorial Highway
York County, Virginia



Parking Lot



*This information was obtained from sources deemed to be reliable, but is not warranted.
This offer subject to errors and omissions, or withdrawal, without notice.*

Campana Waltz
Commercial Real Estate, LLC

Smoker



Parking Lot

*This information was obtained from sources deemed to be reliable, but is not warranted.
This offer subject to errors and omissions, or withdrawal, without notice.*

Campana Waltz
Commercial Real Estate, LLC

Property Identification
4724 George Washington Memorial Highway
York County, Virginia

The subject property consists of a 1.88 acre site that is located at 4724 George Washington Memorial Highway, York County, Virginia. The site is improved with a one-story restaurant building and associated site improvements. The Real Estate Assessor for York County identifies the subject property with G-Pin number S06d-2599-0034. The legal description for 4724 George Washington Memorial Highway is:

All that certain piece or parcel of land situate, lying and being in York County, containing between 1.8942 acres and more particularly described as follows: Beginning at a point marked by an iron pipe in the easterly right of way U.S. Route 17 where the property herein joins the property of Knox and from that point of the beginning thence running North 68° 48' 13" E a distance of 446.01 feet; thence North 17° 20' 34" West a distance of 170.83 feet; thence South 72° 33' 12" West a distance of 445.01 feet in the easterly line of U.S. Route 17; these South 17° 20' 34" East a distance of 200.00 feet to the point of beginning.

Neighborhood Summary

The subject property is located in the Grafton section of York County on the east side of U.S. Route 17 (George Washington Memorial Highway), ¼ -mile north of the intersection of Lakeside Drive. The county is generally bound by Newport News to the west and south, the York River and U.S. Naval Weapons Station to the north, and the Chesapeake Bay to the east.

The population of York County was 56,297 based on the 2000 census. On average, the population grew at an annual rate of about 4% per annum between 1960 and 2000 (21,583 to 56,297 persons).

York County's economic base is closely tied to tourism and the military. It is the site of the Yorktown Naval Weapons Station, as well as tourist attractions such as the Yorktown Battlefield and Water Country USA. Major industry includes the Amoco Oil refinery and a Philip Morris plant.

Commercial uses fronting this section of George Washington Memorial Highway include a variety of uses including strip centers, free standing retail buildings, office buildings, convenience stores/gasoline stations and churches. Residential development is primarily located to the east of the subject property. Many of these neighborhoods benefit from water views and frontage along the Poquoson River.

George Washington Memorial Highway (U.S. Route 17) is a median divided, four-lane highway that extends from the James River Bridge (Hampton, VA) to Gloucester, Virginia and adjoining counties to the north. Additional access to the neighborhood is provided by Denbigh Boulevard which, intersection George Washington Memorial Highway, one mile north of the subject, and extends to the Warwick River in Newport News.

The most proximate commercial development in the county is south of the subject in the Grafton area. Washington Square and the Grafton Shopping Center are both located at the intersection of Dare Road and Route 17. Washington Square is a 156,000+ SF community center anchored by Roses, Food Lion and Rite Aid. Grafton Shopping Center is a 60,000+ neighborhood center. Other development at the intersection includes banks, gas stations, and fast food restaurants.

The focus of residential and commercial development in York County has been at Kiln Creek, which is located in the southern end of the county at Victory Boulevard, southwest of the subject. The development encompasses areas of both York County and Newport News. Kiln Creek contains 1,200 acres and will ultimately include 2,500 to 4,000 residential units. Commercial development includes a Super K store, Real Cinema complex, a Farm Fresh supermarket, and a variety of in-line and free-standing retail and service businesses.

In summary, the subject is well located on U. S. Route 17, a heavily traveled thoroughfare through York County. The proximity to employment centers and the easy access should continue to make the subject a viable property based on its current use.

- (d) In the event of conflict between the Tables of Lot and Building Dimensional Requirements and the text of this chapter, the text shall control.

Sec. 24.1-305. Additional requirements.

- (a) Additional provisions which may be directly applicable to the types of development permitted in the zoning districts are contained in other sections of this chapter and may qualify or supplement the regulations presented within each district. Furthermore, other provisions of the code, including without limitation, the erosion and sediment control ordinance, stormwater management ordinance and subdivision ordinance may affect the use and development of land.
- (b) Performance standards for most uses are contained in article IV of this chapter. These are minimum standards which must be achieved for the establishment of the use to which they pertain whether the use is permitted as a matter of right or only by a special or administrative permit. Additional performance standards may be imposed during the issuance of special use permits in accordance with the applicable provisions of this chapter.

Sec. 24.1-306. Table of land uses.

P=PERMITTED USE S=PERMITTED BY SPECIAL USE PERMIT	RESIDENTIAL DISTRICTS							COMMERCIAL AND INDUSTRIAL DISTRICTS						
	RC	RR	R33	R20	R13	R7	RMF	NB	LB	GB	WCI	EO	IL	IG
	CATEGORY 1 - RESIDENTIAL USES													
USES														
1. Residential - Conventional														
a) Single-Family, Detached	P	P	P	P	P		S							
b) Single-Family, Attached														
• Duplex					S		P							
• Townhouse							P							
• Multiplex							P							
c) Multi-Family							P							
d) Manufactured Home (Permanent)						P								
2. Residential (Cluster Techniques Open Space Development)														
a) Single-Family, Detached	P	P	P	P	P									
b) Single-Family, Attached														
• Duplex	S	S	S	S	S									
3. Apartment Accessory to Single-Family Detached	(1)	(1)	(1)	(1)	(1)									
4. Manufactured Home Park						S								
5. Boarding House		S					S							
6. Tourist Home, Bed and Breakfast	S	S	S	S	S		S		P	P				
7. Group Home (for more than 8 occupants)		S	S	S	S		S							
8. Transitional Home		S	S	S	S		S							
9. Senior Housing – Independent Living Facility														
(a) detached or attached units w/individual outside entrances							S							
(b) multi-unit structures w/internal entrances							S		S	S		S		
(c) multi-unit structure w/internal or external entrances to individual units when established in an adapted structure formerly used as hotel or motel.									S	S		S		

(1) Refer to Section 24.1-407 for accessory apartment location and performance standards

(Ord. No. 03-2, 1/21/03; Ord. No. 03-8(R), 3/4/03; Ord. No. 03-25, 6/17/03; Ord. No. 08-17(R), 3/17/09; Ord. No. 11-15(R), 11/16/11; Ord. No. 13-16, 11/19/13; Ord. No. 14-12, 6/17/14)

P=PERMITTED USE S=PERMITTED BY SPECIAL USE PERMIT	RESIDENTIAL DISTRICTS							COMMERCIAL AND INDUSTRIAL DISTRICTS						
	RC	RR	R33	R20	R13	R7	RMF	NB	LB	GB	WCI	EO	IL	IG
USES	CATEGORY 2 - AGRICULTURE, ANIMAL KEEPING, AND RELATED USES													
1. Aquaculture	P										P		P	P
2. Agriculture	P	P											P	P
3. Horsekeeping in Conjunction with Residential Use	P	P	S	S	S		S	S	S	S			S	S
4. Plant Nursery or Greenhouse														
a) Wholesale Only	P	P								P		P	P	
b) Retail Sales with or without wholesale sales	S									P		P	P	
		S							P					
c) Retail or Wholesale with accessory landscape contracting storage & equipment	S	S								S		P	P	P
5. Private Kennel accessory to a residence	P	P	S	S	S						S		S	
6. Backyard chicken-keeping accessory to a single-family detached dwelling	P	P	P	P	P						P			
7. Animal Hospital, Vet Clinic, Commercial Kennel														
a) Without Outside Runs	S	S					S		S	P		P	P	P
b) With Outside Runs	S	S								S		S	P	P
8. Commercial Stables		S											S	S
9. Commercial Orchard or Vineyard	P	P		S	S					S		P	P	P
10. Forestry	P	P		S	S	S	S	S	S	S	S	S	S	S
11. Farmer's Market	S							P		P		P	P	P

(Ord. No. 11-15(R), 11/16/11; Ord. No. 14-12, 6/17/14)

P=PERMITTED USE S=PERMITTED BY SPECIAL USE PERMIT	RESIDENTIAL DISTRICTS							COMMERCIAL AND INDUSTRIAL DISTRICTS						
	RC	RR	R33	R20	R13	R7	RMF	NB	LB	GB	WCI	EO	IL	IG
USES	CATEGORY 3 - HOME OCCUPATIONS													
1. Activities with No On-Premises Retail Sales, Personal Services or Customer Contact	P	P	P	P	P	P	P				P			
2. Activities with Limited On-Premises Retail Sales, Personal Services or Customer Contact	S	S	S	S	S	S	S				P			
3. Small Contracting Business	S	S									S			

(Ord. No. 14-12, 6/17/14)

P=PERMITTED USE S=PERMITTED BY SPECIAL USE PERMIT	RESIDENTIAL DISTRICTS							COMMERCIAL AND INDUSTRIAL DISTRICTS						
	RC	RR	R33	R20	R13	R7	RMF	NB	LB	GB	WCI	EO	IL	IG
USES	CATEGORY 4 - COMMUNITY USES													
1. Meeting Halls, Recreational, Social Uses, or Private Clubs Operated by Social, Fraternal, Civic, Public, or Similar Organizations		S	S	S	S	S	S	S	S	P	S			P
2. Any Recreational or Social Uses Approved as a Part of a Subdivision or Site Plan and Operated Primarily for Use of Residents or Occupants of Such Development	P	P	P	P	P	P	P				P			

(Ord. No. 14-12, 6/17/14)

PERMITTED USE S=PERMITTED BY SPECIAL USE PERMIT	RESIDENTIAL DISTRICTS							COMMERCIAL AND INDUSTRIAL DISTRICTS						
	RC	RR	R33	R20	R13	R7	RMF	NB	LB	GB	WCI	EO	IL	IG
	CATEGORY 5 - EDUCATIONAL USES													
1. Pre-school, Child Care, Nursery School		S	S	S	S	S	S	P	P	P	S	P		
2. Elementary, Intermediate, High School and/or Vo-Tech and Related Support Facilities														
a) York County Public Schools	P	P	P	P	P	P	P	P	P	P	P	S	S	S
b) Other		S	S	S	S	S	S	S	S	P	S	S	S	S
3. Technical, Vocational, Business School									S	P		P	P	
4. College/University		S							S	P		P		

(Ord. No. 14-12, 6/17/14)

P=PERMITTED USE S=PERMITTED BY SPECIAL USE PERMIT	RESIDENTIAL DISTRICTS							COMMERCIAL AND INDUSTRIAL DISTRICTS						
	RC	RR	R33	R20	R13	R7	RMF	NB	LB	GB	WCI	EO	IL	IG
	CATEGORY 6 - INSTITUTIONAL USES													
1. Place of Worship including Accessory Parsonage, Parochial School, Accessory Day Care, Accessory Cemetery		P	P	P	P	P	P	P	P	P				
1a. Convent/Monastery		S					S		S			S		
2. Senior Housing – Congregate Care							S		S	S		S		
3. Senior Housing – Assisted Living							S		S	S		S		
4. Senior Housing – Continuing Care Retirement Community							S		S	S		S		
5. Nursing Home		S	S	S	S		S		S	S		S		
6. Medical Care Facility, including General Care Hospital, Trauma Center									S	P		P		
7. Emergency Care/First-Aid Centers or Clinic									P	P		P		
8. Secured Medical Facility										S				

(Ord. No. 11-15(R), 11/16/11; Ord. No. 14-12, 6/17/14)

P=PERMITTED USE S=PERMITTED BY SPECIAL USE PERMIT	RESIDENTIAL DISTRICTS							COMMERCIAL AND INDUSTRIAL DISTRICTS						
	RC	RR	R33	R20	R13	R7	RMF	NB	LB	GB	WCI	EO	IL	IG
	CATEGORY 7 - PUBLIC AND SEMI-PUBLIC USES													
1. Conference Center									P	P		P		
2. Post Office								P	P	P		P		
3. Animal Shelter		S											S	S
4. Museum									P	P	S	P		
5. Government Offices	P	P	P	P	P	P	P	P	P	P	P	P	P	P
6. Libraries		P	P	P	P	P	P	P	P	P	P	P	P	P
7. Public Safety Facilities (Fire, Rescue, Sheriff)	P	P	P	P	P	P	P	P	P	P	P	P	P	P
8. Park or Recreation Facilities (Civic or Semi-Public), excluding golf courses	S	S	S	S	S	S	S	S		P	S	P	S	S
9. Governmental Park & Recreation Facilities (Athletic and Non-Athletic)	P	P	P	P	P	P	P	P	P	P	P	P	P	P
10. Cemetery	S	S	S	S	S	S	S		P	P				
11. Military Installation	P	P												

CHAPTER 24.1

(Ord. No. 14-12, 6/17/14)

(Ord. No. 14-12, 6/17/14)

(Ord. No. 14-12, 6/17/14)

USES <small>P=PERMITTED USE S=PERMITTED BY SPECIAL USE PERMIT</small>	RESIDENTIAL DISTRICTS							COMMERCIAL AND INDUSTRIAL DISTRICTS						
	RC	RR	R33	R20	R13	R7	RMF	NB	LB	GB	WCI	EO	IL	IG
	CATEGORY 10 - COMMERCIAL / RETAIL ¹													
1. Antiques/Reproductions, Art Gallery								P	P	P	P	P		
2. Wearing Apparel Store								P	P	P		P		
3. Appliance Sales										P		P		
4. Auction House									P	P		S		
5. Convenience Store								S	S	S		S		
6. Grocery Store								P		P		P		
7. Book, Magazine, Card Shop								P	P	P		P		
8. Camera Shop, One-Hour Photo Service								P	P	P		P		P
9. Florist								P	P	P		P		P
10. Gifts, Souvenirs Shop									P	P		P		
11. Hardware, Paint Store									P	P		P	P	P
12. Hobby, Craft Shop									P	P		P		
13. Household Furnishings, Furniture										P		P		
14. Jewelry Store									P	P		P		
15. Lumberyard, Building Materials										S			P	P
16. Music, Records, Video Tapes									P	P		P		
17. Drug Store								S	S	P		P		
18. Radio and TV Sales									S	P		P		
19. Sporting Goods Store									P	P		P		
20. Firearms Sales and Service									S	S		S		
21. Tobacco Store									P	P		P		
22. Toy Store									S	P		P		
23. Gourmet Items/Health Foods/Candy/ Specialty Foods/Bakery Shops								P	P	P		P		
24. ABC Store									P	P		P		
25. Bait, Tackle/Marine Supplies Including Incidental Grocery Sales										P	P	P	S	S
26. Office Equipment & Supplies									P	P		P	P	P
27. Pet Store								S	P	P		P		
28. Bike Store, Including Rental/Repair								P	P	P		P		P
29. Piece Goods, Sewing Supplies								P	P	P		P		
30. Optical Goods, Health Aids or Appliances									P	P		P		P
31. Fish, Seafood Store										P	P	P		
32. Department, Variety, Discount Store										P		P		
33. Auto Parts, Accessories (new parts)									P	P		P		
34. Second Hand, Used Merchandise Retailers (household items, etc.)														
a) without outside display/storage									P	P				
b) with outside display/storage									S	S				
35. Storage shed and utility building sales/display										S			P	P
36. Home Improvement Center										P		P		

(Ord. No. 14-12, 6/17/14)

¹See Section 24.1-466(g) for special provisions applicable to developments with 80,000 or more square feet of gross floor area.

USES	RESIDENTIAL DISTRICTS							COMMERCIAL AND INDUSTRIAL DISTRICTS						
	RC	RR	R33	R20	R13	R7	RMF	NB	LB	GB	WCI	EO	IL	IG
	CATEGORY 11 – BUSINESS / PROFESSIONAL SERVICE													
1. Broadcasting Studio									P	P		P	P	P
2. Barber/Beauty Shop								P	P	P		P		P
3. Apparel Services (Dry Cleaning/Laundry retail) Laundromat, Tailor, Shoe Repair, etc.)								P	P	P		P	P	P
4. Funeral Home (may include cremation services)									S	P		P		
4a. Cremation Services (human or pets)										S			S	S
5. a) Photographic Studio								S	P	P		P	P	P
b) Film Processing Lab									S	P		P	P	P
6. Household Items Repair										P		P	P	P
7. Fortune Teller										S				
7.1 Tattoo Parlor										S			S	
7.2 Pawn Shop										S				
8. a) Banks, Financial Institutions								P	P	P		P		
b) Freestanding Automatic Teller Machines								P	P	P	S	P		
8.1 Payday Loan Establishments										S				
9. Offices							S	P	P	P		P	P	P
10. Hotel & Motel									S	P	S	P		
11. Timeshare Resort							S			S	S	S		
12. Restaurant/Sit Down									P	P		P		
13. Restaurant/Brew-Pub										P		P		
14. Restaurant/Fast Food									S	P		S		
15. Restaurant/Drive In									S	P		S		
16. Restaurant - Carryout/Delivery only								S	P	P		S		
17. Catering Kitchen/Services								S	P	P		S		
18. Nightclub									S	S		S		
19. Commercial Reception Hall or Conference Center								S	S	P	S	P		
20. Small-Engine Repair (lawn and garden equipment, outboard motors, etc.)										P	P		P	P
21. Tool, Household Equipment, Lawn & Garden Equipment, Rental Establishment										P		P	P	P
22. Establishments Providing Printing, Photocopying, Blueprinting, Mailing, Facsimile Reception & Transmission or similar business services to the general public, and business and professional users									P	P		P	P	P
23. Professional Pharmacy								P	P	P		P		

(Ord. No. 05-34(R), 12/20/05; Ord. No. 06-21, 9/19/06; Ord. No. 14-12, 6/17/14)

USES	RESIDENTIAL DISTRICTS							COMMERCIAL AND INDUSTRIAL DISTRICTS						
	RC	RR	R33	R20	R13	R7	RMF	NB	LB	GB	WCI	EO	IL	IG
	CATEGORY 12 – MOTOR VEHICLE / TRANSPORTATION													
1. Car Wash									S	S		S		
2. Automobile Fuel Dispensing Establishment/ Service Station (May include accessory convenience store and/or car wash)										S		S	S	
3. Auto Repair Garage										S			P	P
4. Auto Body Work & Painting										S		S	P	P
5. Auto or Light Truck Sales, Rental, Service (New or used vehicles sales) (Including Motorcycles or R.V.'s)										S		S	P	P
a) Without Auto Body Work & Painting										S		S	P	P
b) With Body Work & Painting										S		S	P	P
6. Heavy Truck and Equipment Sales, Rental, Service										S			P	P
7. Farm Equipment Sales, Rental, Service										S			P	P
8. Manufactured Home Sales, Rental, Service										S			S	S
9. Boat Sales, Service, Rental, and Fuel Dispensing										P	P		S	
10. Marine Railway, Boat Building and Repair											P		P	P
11. Truck Stop													S	S
12. Truck Terminal													P	P
13. Heliport										S		S	S	S
14. Helipad										S		S	S	S
15. Airport												S	S	S
16. Bus or Rail Terminal										P		S	P	P
17. Taxi or Limousine Service										P			P	
18. Towing Service / Auto Storage or Impound Yard													S	S
18a. Recreational Vehicle Storage Facility										S			P	P
19. Automobile Graveyard, Junkyard														S
20. Bus Service/Repair Facility													P	P

(Ord. No. 09-22(R), 10/20/09; Ord. No. 10-24, 12/21/10; Ord. No. 14-12, 6/17/14)

USES	RESIDENTIAL DISTRICTS							COMMERCIAL AND INDUSTRIAL DISTRICTS						
	RC	RR	R33	R20	R13	R7	RMF	NB	LB	GB	WCI	EO	IL	IG
	CATEGORY 13 - SHOPPING CENTERS / BUSINESS PARKS ¹													
1. Neighborhood Shopping Center								P	P	P		P		
2. Community or Regional Shopping Center										P		P		
3. Specialty Shopping Center									S	P		P		
4. Office Park									P	P		P	P	P
5. Industrial Park												P	P	P

(Ord. No. 14-12, 6/17/14)

¹See Section 24.1-481(a)(3) for special provisions applicable to shopping centers with 80,000 or more square feet of gross floor area.

USES	RESIDENTIAL DISTRICTS							COMMERCIAL AND INDUSTRIAL DISTRICTS						
	RC	RR	R33	R20	R13	R7	RMF	NB	LB	GB	WCI	EO	IL	IG
	CATEGORY 14 - WHOLESALING / WAREHOUSING													
1. Wholesale Auction Establishment a) without outdoor storage/activity b) with outdoor storage										P			P	P
										S			P	P
2. Warehousing, Including Moving and Storage Establishment										S		S	P	P
3. Wholesale Trade Establishment (May include accessory retail sales) a) without outdoor storage b) with outdoor storage										P		P	P	P
										S		S	P	P
4. Seafood Receiving, Packing, Storage											P		S	P
5. Petroleum Products Bulk Storage/Retail Distribution													S	P
6. Mini-Storage Warehouses a. Single-story b. Multi-story										S			P	P
										S			P	P

(Ord. No. 11-15(R), 11/16/11; Ord. No. 14-12, 6/17/14)

USES	RESIDENTIAL DISTRICTS							COMMERCIAL AND INDUSTRIAL DISTRICTS						
	RC	RR	R33	R20	R13	R7	RMF	NB	LB	GB	WCI	EO	IL	IG
	CATEGORY 15 - LIMITED INDUSTRIAL ACTIVITIES													
1. Laboratories, Research/Development Testing Facilities										S		P	P	P
2. Publishing, Printing, Other than general public and business/professional services										P		P	P	P
3. Computer and Technology Development and Assembly										P		P	P	P
4. Contractors' Shops (e.g., Plumbing, Electrical, Mechanical, HVAC, Home Improvement or Construction, Swimming Pool, Landscaping, Cabinetmaking, General Building, Excavating, etc.) a) With Enclosed Storage of Equipment or Materials b) With Outdoor/Exposed Storage										P			P	P
										S			P	P
5. Laundry, Dry Cleaning Plant (institutional)													P	P
6. Stone Monument Sales, Processing													S	P
7. Manufacture or Assembly of Electronic Instruments, Components, Devices										S	S	P	P	P
8. Machine Shops & Fabricators										S	S		P	P
9. Manufacture or Assembly of Medical, Drafting, Metering, Marine, Photographic, Mechanical Instruments												P	P	P
10. Ice Manufacturing and Storage													P	P
11. Sales, Distribution, and Installation of Glass, Including Windows, Mirrors, and/or Automobile Glass									S	P			P	P
12. Recycling Center									S	S			P	P
13. Recycling Plant													S	P

(Ord. No. 14-12, 6/17/14)

USES <i>P=PERMITTED USE S=PERMITTED BY SPECIAL USE PERMIT</i>	RESIDENTIAL DISTRICTS							COMMERCIAL AND INDUSTRIAL DISTRICTS						
	RC	RR	R33	R20	R13	R7	RMF	NB	LB	GB	WCI	EO	IL	IG
	CATEGORY 16 - GENERAL INDUSTRIAL													
1. Manufacture & Assembly of Tools, Firearms, Hardware, HVAC Equipment												S	P	P
2. Manufacture & Assembly of Musical Instruments, Toys, Novelties												S	P	P
3. Manufacture, Compounding, Processing, Packaging of Cosmetics, Toiletries, Pharmaceuticals												S	P	P
4. Manufacture, Compounding, Assembly of Products Made From Previously Prepared Paper, Plastic, Metal, Textiles, Tobacco, Wood, Paint, Fiber, Glass, Rubber, Leather, Cellophane, Canvas, Fur, Felt, Horn, Wax, Hair, Yarn												S	P	P
5. Manufacture of Pottery and Ceramic Products												S	P	P
6. Manufacture, Compounding, Processing & Packaging of Food and Food Products												S	P	P
7. Concrete or Asphalt Mixing, Batching Plant														S
8. Distillation of Varnish, Turpentine														S
9. Fertilizer Manufacturing														S
10. Fireworks, Explosives Manufacturing, Storage														S
11. Fish Canning, Curing, Grinding, Smoking											S			S
12. Glue, Size Manufacturing														S
13. Iron, Steel, Copper, Metal Works & Foundries														S
14. Lime, Cement, Gypsum, Plaster Manufacturing														S
15. Petroleum Products, Alcohol Refining, Manufacturing, Mixing, Storage														S
16. Soap Manufacturing														S
17. Tanning/Curing Hides														S
18. Slaughterhouse, Rendering Plant														S
19. Chemical Manufacturing													S	S
20. Paint, Shellac Manufacturing													S	S
21. Extractive Industries, Surface Mines, Borrow Pits														S
21.1. Soil Stockpiling	S	A	S	S	S	S	S	A	A	A	A	A	A	A
22. Sawmill/Firewood splitting/sales lot													S	S
23. Construction Trailer Storage Yards													S	S
24. Reclamation of Non-Conforming Borrow Pits	P	P	P	P	P	P	P	P	P	P	P	P	P	P
25. Meat & Poultry Packing, Curing, Canning, Smoking														S

(Ord. No. 14-12, 6/17/14)

USES	RESIDENTIAL DISTRICTS							COMMERCIAL AND INDUSTRIAL DISTRICTS						
	RC	RR	R33	R20	R13	R7	RMF	NB	LB	GB	WCI	EO	IL	IG
	CATEGORY 17 - UTILITIES													
1. Electric Substations, Distribution Center, Transformer Stations, Telephone Exchanges	S	S	S	S	S	S	S	A	A	A	S	S	A	P
2. Electric Generating Plants														S
3. Sewage Pump/Lift Stations	P	P	P	P	P	P	P	P	P	P	P	P	P	P
4. Sewage Treatment/Disposal Facilities	S	S											S	S
5. Water Purification Facilities	S	S											S	P
6. Water Storage Towers	S	S	S	S	S	S	S	S	S	S	S	S	S	P
7. Radio, Television, Microwave Facilities	S	S								S	S	S	P	P
8. Utility Transmission Facilities other than Normal Distribution Facilities (Essential Services): Including Telephone Exchanges, Pipelines, High Voltage Power Lines	S	S	S	S	S	S	S	S	S	S	S	S	S	S
9. Solid Waste Disposal and Treatment Facilities including Incinerators, Landfills, Transfer Stations														S
10. Storage, Handling, Transport of Coal or Other Solid Fossil Fuels used in the County; Storage, Handling, Transport, Disposal of Fly Ash, Bottom Ash														S

(Ord. No. 098-18, 10/7/98; Ord. No. 099-17, 12/1/99; Ord. No. 00-12, 7/18/00; Ord. No. 00-15, 8/15/00; Ord. No. 00-22, 12/19/00; Ord. No. 03-25, 6/17/03; Ord. No. 04-2(R), 3/2/04; Ord. No. 05-13(R), 5/17/05; Ord. No. 06-19(R), 7/18/06; Ord. No. 08-17(R), 3/17/09; Ord. No. 10-18(R-1), 1/18/11; Ord. No. 14-12, 6/17/14)

Sec. 24.1-307. Prohibited uses.

The following uses shall be prohibited in the county:

- (a) Smelting;
- (b) Nuclear materials manufacturing;
- (c) Nuclear waste processing or disposal;
- (d) Biohazard waste processing or disposal; and
- (e) Manufacture, transformation, or distribution of biologically accumulative poisons or other poisons that are or ever were registered in accordance with the provisions of the Federal Insecticide, Fungicide, and Rodenticide Act (7 USC 135, et sec.).
- (f) ATV (All Terrain Vehicle) tracks, cross-country circuits or other facilities de-signed or used for operation of such vehicles by other than the property owner/occupant as an activity accessory to their residential use of a property.
- (g) Placement of trailers or containerized cargo units on any property for storage or other uses, except as specifically authorized by the terms of this chapter.

(Ord. No. 05-13(R), 5/17/05; Ord. No. 08-17(R), 3/17/09)

Secs. 24.1-308—24.1-319. Reserved

DIVISION 2. RESIDENTIAL DISTRICTS

AGENCY DISCLOSURE

In a real estate transaction, when the Agent represents the:

Seller/Landlord:

then an Agent under a listing agreement with a seller acts as the agent for the seller. The listing company and all of its broker/agents, and the selling company and all of its agents as subagents of the seller, would owe their fiduciary duties to the seller. The broker and broker's agents may still provide buyer/tenants, as customers, with information about properties and available financing, may show them properties, and may assist them in preparing an offer to purchase, option or lease a particular property.

Buyer/Tenant:

then an Agent under a contract with a buyer acts as the agent for that buyer only, as a "Buyer/Broker/Agent," and the Agent is not the seller's agent, even if the Purchase Contract provides that the Seller or the Listing Broker will pay the Agent for the services rendered to the buyer/tenant. An Agent acting as the buyer's/tenant's agent must disclaim sub agency if offered and must disclose the Buyer/Tenant Broker/Agent relationship when dealing with the seller's/landlord's Agent or the Seller/Landlord. The Buyer/Tenant Broker/Agent owes its fiduciary duties to the buyer/tenant.

Buyer and Seller (Acting as a Dual Agent):

then an Agent, either acting directly or through one or more of the brokerage firm's other Agents, may be the Agent of both the buyer and the seller, but only if the scope of the agency is limited by a written agreement and only with the express knowledge and written consent of both the buyer and the seller. An Agent representing both the buyer and the seller must disclose all information regarding the agency relationship, including the limitation on the Agent's ability to represent either party fully and exclusively. The Agent must not disclose to either party, without the prior consent of the party adversely affected by the disclosure, any information obtained within the confidentiality and trust of the fiduciary relationship. As an example, the Agent must not tell the buyer that the seller will accept a price lower than the listing price, nor tell the seller that the buyer will pay a price offered, without the prior consent of the party adversely affected by the disclosure.

Campana Waltz Commercial Real Estate, LLC is the _____ Listing Broker, _____ Buyer Broker, _____ Dual Agent for the property submitted in this information package.

Acknowledged by:

Campana Waltz Commercial Real Estate, LLC