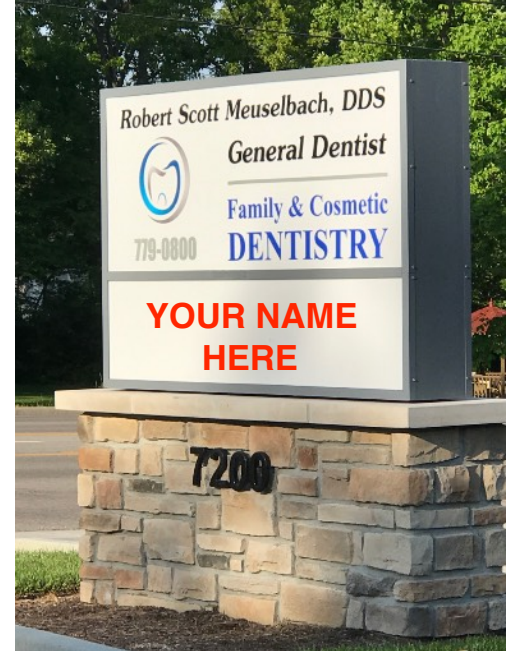


FOR LEASE

**7200 Tylersville Road #B**

West Chester, OH 45069



*Click for Photos*

## Property Highlights

- 2,592 SF
- Professional office building (co-tenant Mueselbach Family Dental)
- End cap space
- 1st generation space - new construction
- Build-to-Suit (TIA for qualified tenants)
- Ample & convenient parking with private entrance
- 1/2 mile to I-75 in well developed retail/office area
- High visibility on busy road

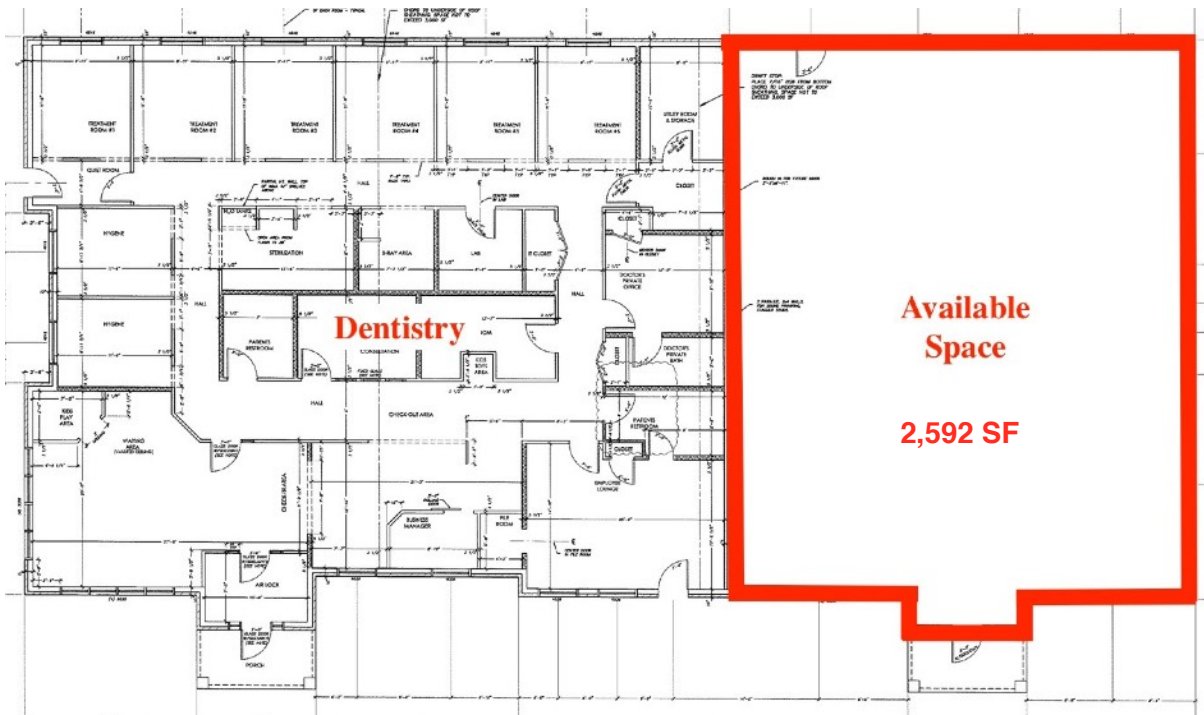


North Ridge Realty Group  
5430 West Chester Road | West Chester, OH 45069

[www.nrrg.com](http://www.nrrg.com)

**Susan & John Stretch | c: 513.315.8522 | o: 513.860.5050 | [susan@nrrg.com](mailto:susan@nrrg.com)**

Disclaimer: The Realtor involved in selling the premises is relying on all information provided herein or supplied by owner or owner's sources in connection with the Real Estate. We cannot guarantee this information.



## Site Plan

### Property Details

Location	West Chester, OH (Butler County)
Building Type	Professional office, multi-tenant
Year Built	2016
Available SF	2,592 SF
Amenities	1st floor private entry, ample parking
Tenant Finish	1st generation/Build-to-Suit (allowance for qualified tenants)
Signage	Marquis and placard by door
Utilities	Separately metered
Rate	\$16.25 PSF NNN
NNN	\$4.25 PSF

*The assurance of expertise.  
The reputation for results.*

[www.nrrg.com](http://www.nrrg.com)



Disclaimer: The Realtor involved in selling the premises is relying on all information provided herein or supplied by owner or owner's sources in connection with the Real Estate. We cannot guarantee this information.