

*Flagship Retail Available For Lease*

# 380 Columbus Avenue

AKA 101 West 78th Street  
Upper West Side Corner Landmark Retail



**Brad Cohen**

Senior Director  
bcohen@easternconsolidated.com  
646-374-8575

**Jon Kamali**

Associate Director  
jkamali@easternconsolidated.com  
646-658-7395

**Alex Geisinger**

Associate Director  
ageisinger@easternconsolidated.com  
646-658-7398



# 380 Columbus Avenue



AKA 101 West 78th Street | Upper West Side Corner Landmark Retail

**Approximate Size** (Reasonable Divisions Considered)

**Ground Floor** 5,790 SF

**Lower Level** 5,283 SF

Space A (Formerly Ocean Grill)

Ground: 2,600-3,900 SF + 2,400 SF Basement

Space B (Formerly Gazala)

Ground: 1,888 - 3,123 SF

Space C (Formerly 78 Below)

Selling Lower Level: 1,800-2,700 SF

**Asking Rent** Upon Request

**Term** Negotiable

**Possession** Q2 2017

**Transportation**



**Ceiling Heights**

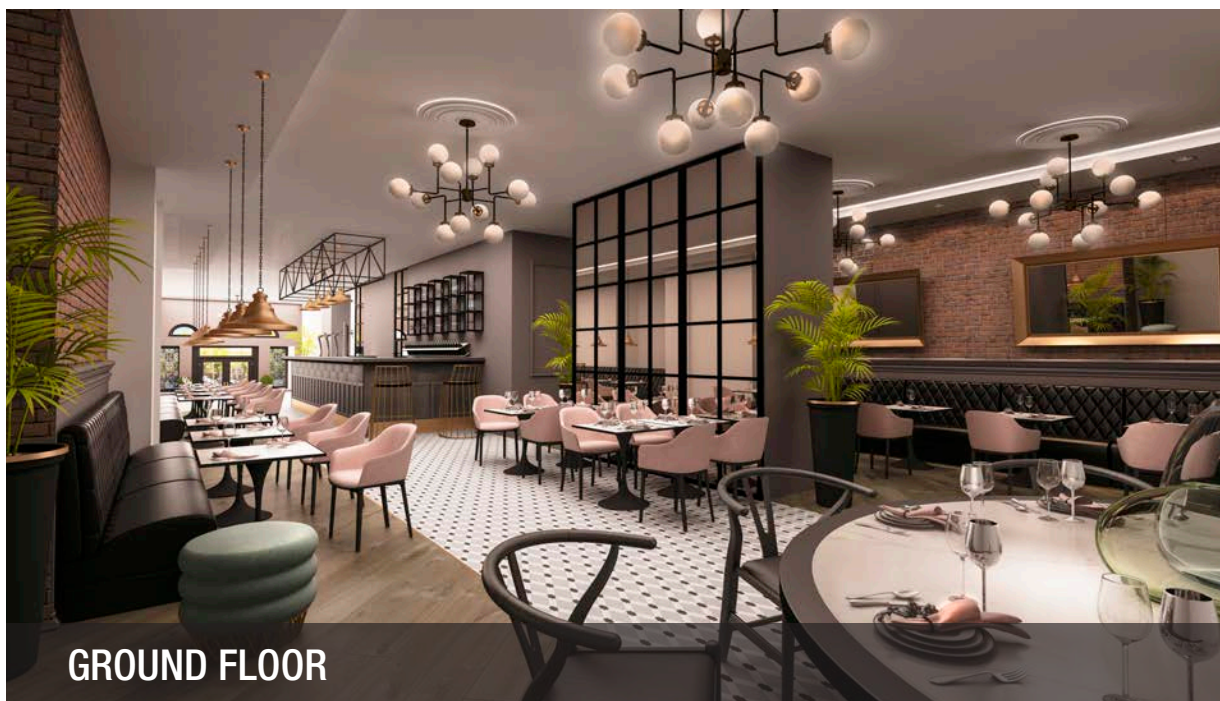
**Ground floors:** 11' 5 ft

**Lower Level:** 9'6 ft

**Comments**

- 2-Story retail consisting of approximately 11,000 square feet between the ground floor and the lower level
- Flagship corner overlooking Museum of Natural History
- Over 100' of wraparound frontage
- Steps from the entrance to B and C subway lines
- Formally Ocean Grill, Gazala, 78 Below





### Approximate Size

2,667-3,902 SF  
+2,400 SF BASEMENT

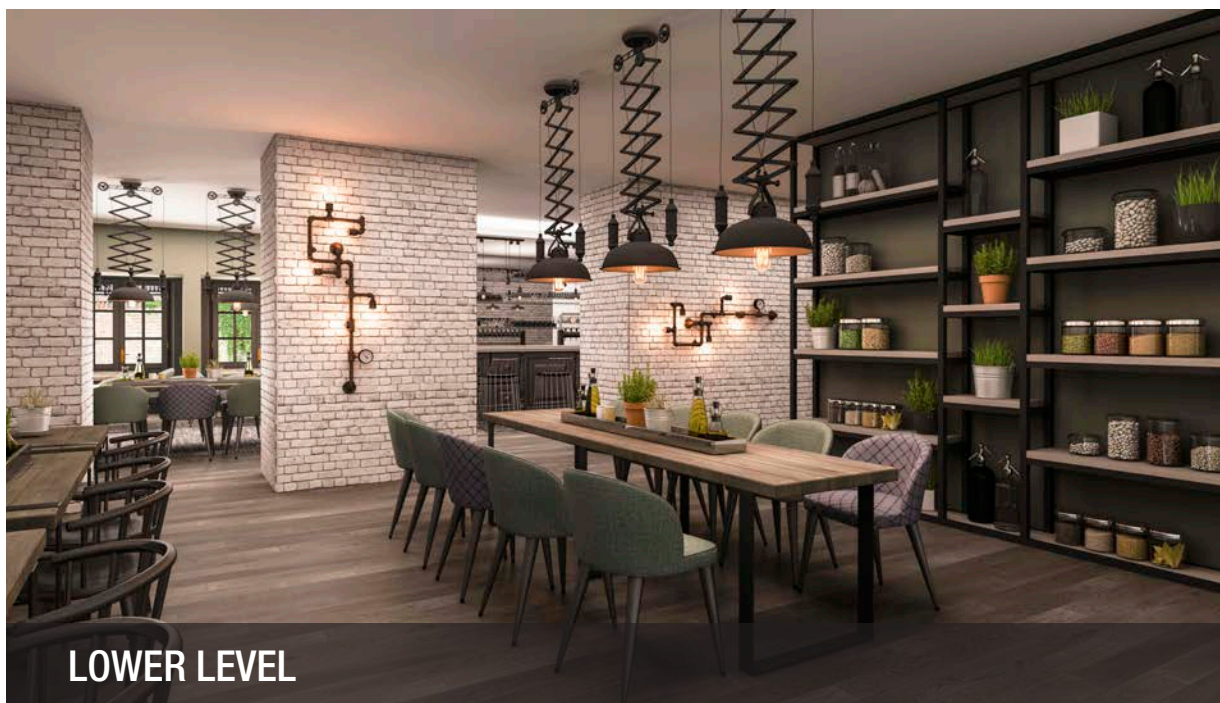
### Ceiling Height

11' 5 ft

- Formerly Ocean Grill
- Outdoor seating
- Flagship corner overlooking Museum of Natural History
- Over 100' of wraparound frontage







**LOWER LEVEL**

**Approximate Size**

2,800 SF

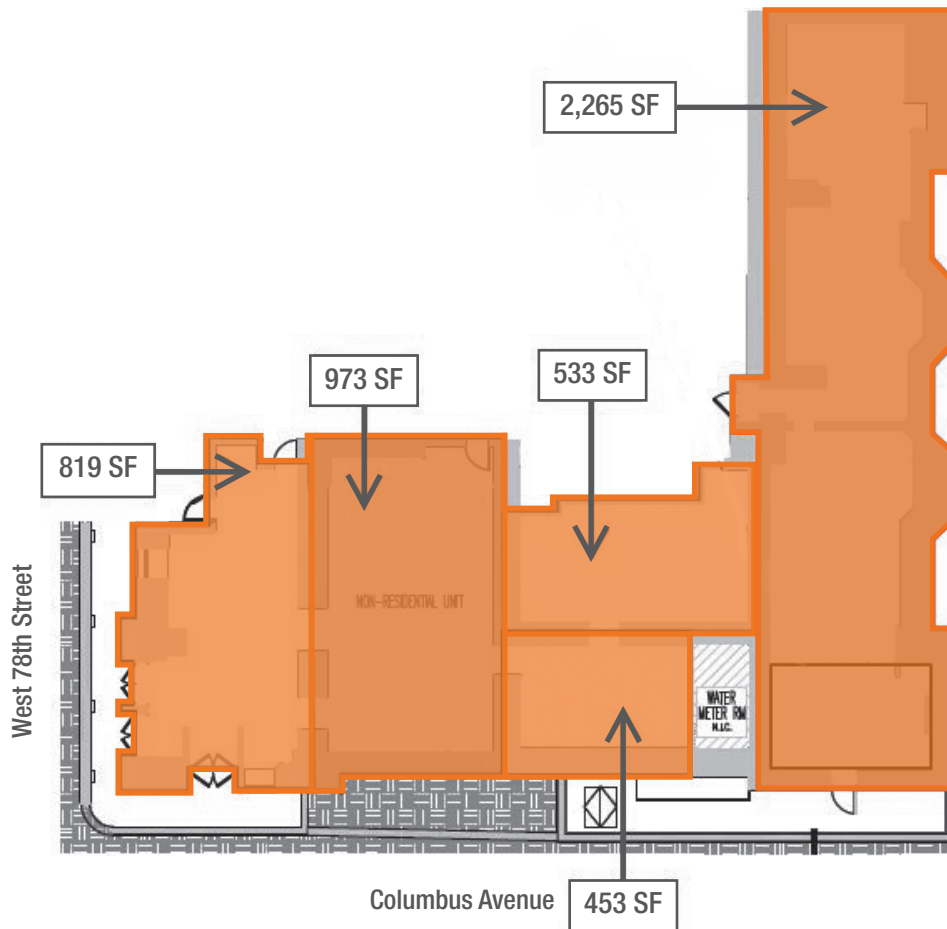
**Ceiling Height**

9'6 ft

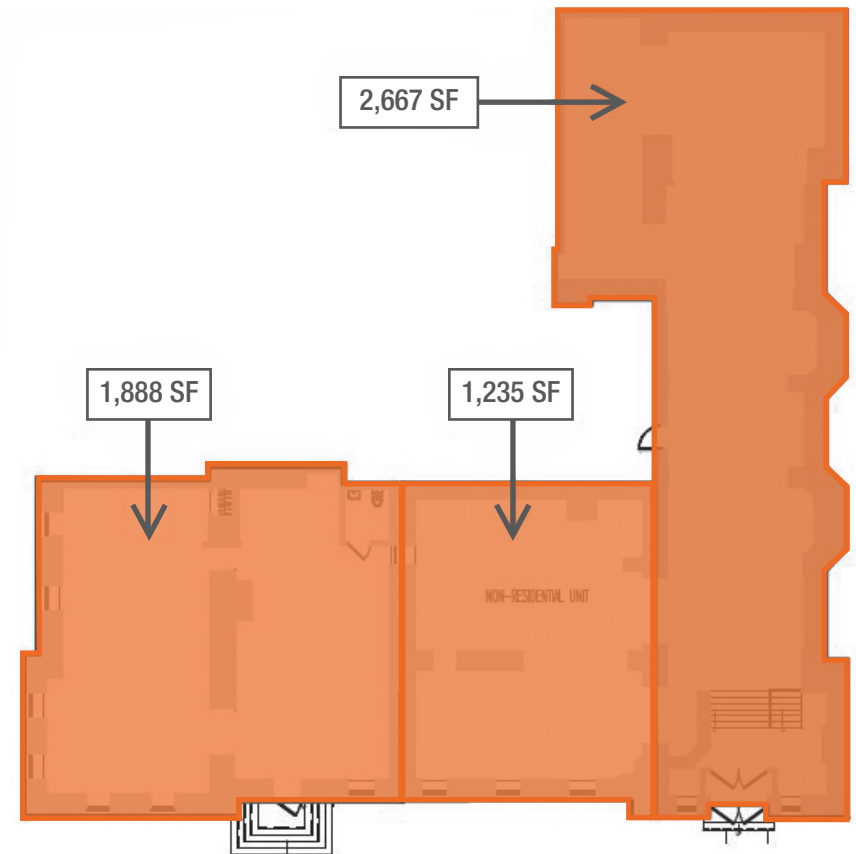
- Unique Selling Lower Level in the UWS
- Formerly “78 Below” Lounge
- Entrance on Columbus Avenue
- Receives Natural Light from Windows



# Floor Plans

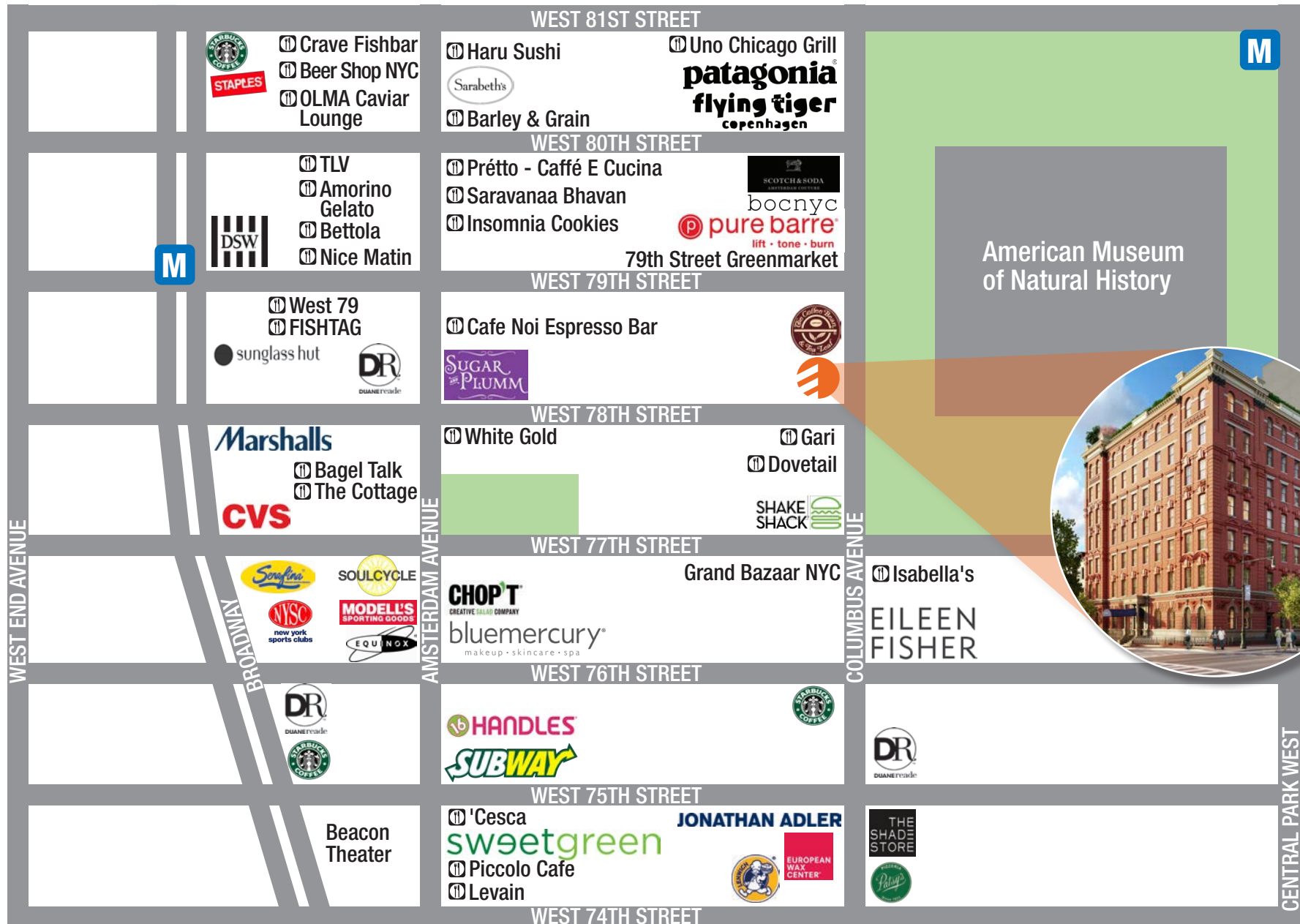


Lower Level Floor Plan



Ground Floor Plan

# Retail Map





# Neighbors

## Restaurants

Sarabeth's, Shake Shack, Gari of Columbus, Redfarm, Isabella's, Café Frida, Dovetail, Muhghalai, Calle Ocho, Tenzan, Riposo 72, Blondie's, Boat Basin Café, Caffè Storico, Raku, Sugar and Plumm, Salumeria Rosi, Peacefood Café, Irving Farm Coffee Roasters, Levain Bakery, Magnolia Bakery, Momoya, Jacob's Pickles, Barney Greengrass, Osteria Cotta, Serafina, Tarallucci e Vino, Dakota Bar, Telepan, Andanada 141

## Fitness & Recreation

Equinox, SoulCycle, Pure Yoga, Flywheel, Theodore Roosevelt Park, Central Park, Riverside Park

## Shopping

Westside Market, Fairway Market, Citarella, Zabar's

## Clothing

Barneys New York, Theory, Rag & Bone, Steven Alan, Jonathan Adler, Malin + Goetz, Mint, Intermix

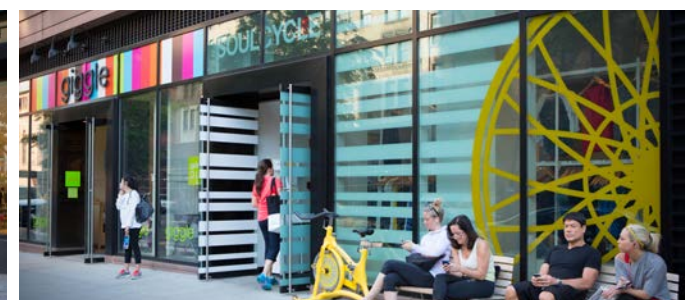
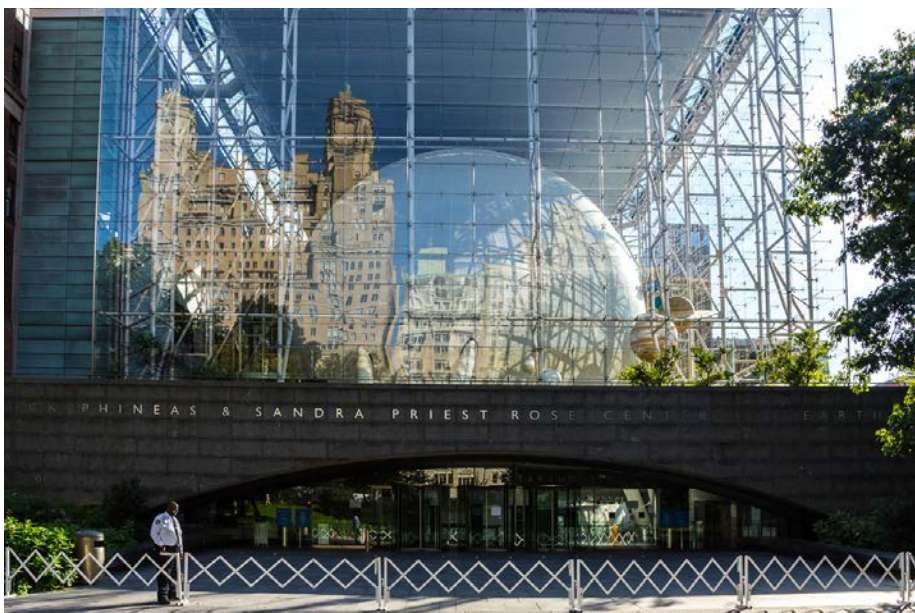
## Cultural

American Museum of Natural History, Children's Museum of Manhattan, Beacon Theatre, JCC Manhattan, New York Historical Society, Steps on Broadway





# Neighborhood Highlights



## Contacts

### Brad Cohen

Senior Director  
bcohen@easternconsolidated.com  
646-374-8575

### Jon Kamali

Associate Director  
jkamali@easternconsolidated.com  
646-658-7395

### Alex Geisinger

Associate Director  
ageisinger@easternconsolidated.com  
646.658.7398