

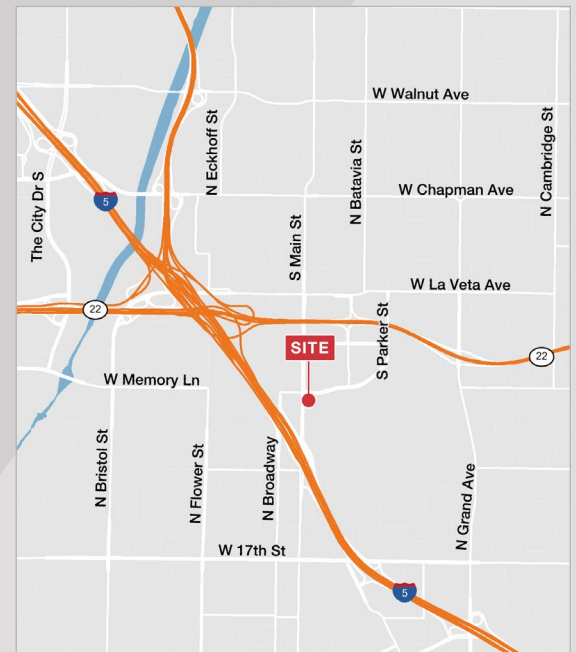


2677 N Main Street

Santa Ana, California 92706

Property Features

- Ten Story, 220,453 SF Class "A" Office Tower
- Suites Available 1,000-7,000 + SF **IMMEDIATE OCCUPANCY**
- Efficient, Multi-Tenant Floorplates
- Convenient Visitor and Structure Parking (4:1,000)
Immediate Freeway Access
- On-Site Deli, Banking, Conference Facility, Auto Detailing and Security
- Former BOMA Building of the Year (2012)



For more information:

Steven Hogberg
949.468.2382
shogberg@naicapital.com
Cal DRE Lic #00871821

Steve Ehrich
949.468.2328
sehrich@naicapital.com
Cal DRE Lic #01092019

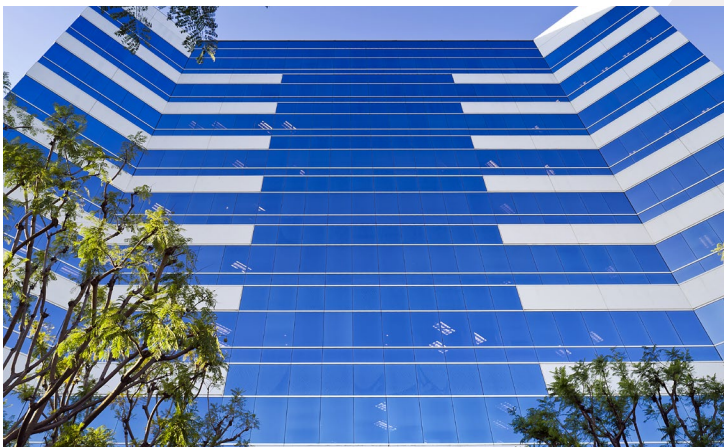
1920 Main St., #100
Irvine, CA 92614
949 854 6600
www.naicapital.com

No warranty, express or implied, is made as to the accuracy of the information contained herein. This information is submitted subject to errors, omissions, change of price, rental or other conditions, withdrawal without notice, and is subject to any special listing conditions imposed by our principals. Cooperating brokers, buyers, tenants and other parties who receive this document should not rely on it, but should use it as a starting point of analysis, and should independently confirm the accuracy of the information contained herein through a due diligence review of the books, records, files and documents that constitute reliable sources of the information described herein. Logos are for identification purposes only and may be trademarks of their respective companies. NAI Capital, Inc. Cal DRE Lic #01990696.

2677 N Main Street

Santa Ana, California 92706

SUITE	SIZE (RSF)	RATE/RSF/MO.	DESCRIPTION
125	982	\$2.65	2 Window Offices and Open Work Area
130	2,485	\$2.65	Double Door Entry, 2 Private Offices, Large Conference Room, Open Area
140	1,743	\$2.65	2 Window Offices, Kitchen, and Open Area SPEC SUITE
240	4,096	\$2.65	4 Private Offices and Open Area SPEC SUITE
300	6,012	\$2.65	Double Door Lobby Presence, Reception, 12 Window Offices, Balance Open Work Area
320	1,440	\$2.65	Corner Space, 1 Private Office, Open Area
400	7,159	\$2.65	Double Door Lobby Entry, Large Conference Room, 4 Window Offices, Open Area, and Storage
465	2,327	\$2.65	2 Private Offices, Storage, Open Area
1080	2,625	\$2.65	Corner Suite with 8 Window Offices, Open Area SPEC SUITE



For more information:

Steven Hogberg
949.468.2382
shogberg@naicapital.com
Cal DRE Lic #00871821

Steve Ehrich
949.468.2328
sehrich@naicapital.com
Cal DRE Lic #01092019

1920 Main St., #100
Irvine, CA 92614
949 854 6600
www.naicapital.com

No warranty, express or implied, is made as to the accuracy of the information contained herein. This information is submitted subject to errors, omissions, change of price, rental or other conditions, withdrawal without notice, and is subject to any special listing conditions imposed by our principals. Cooperating brokers, buyers, tenants and other parties who receive this document should not rely on it, but should use it as a starting point of analysis, and should independently confirm the accuracy of the information contained herein through a due diligence review of the books, records, files and documents that constitute reliable sources of the information described herein. Logos are for identification purposes only and may be trademarks of their respective companies. NAI Capital, Inc. Cal DRE Lic #01990696.

2677 N Main Street

Santa Ana, California 92706

5 NEW SPEC SUITES AVAILABLE!!



For more information:

Steven Hogberg
949.468.2382
shogberg@naicapital.com
Cal DRE Lic #00871821

Steve Ehrich
949.468.2328
sehrich@naicapital.com
Cal DRE Lic #01092019

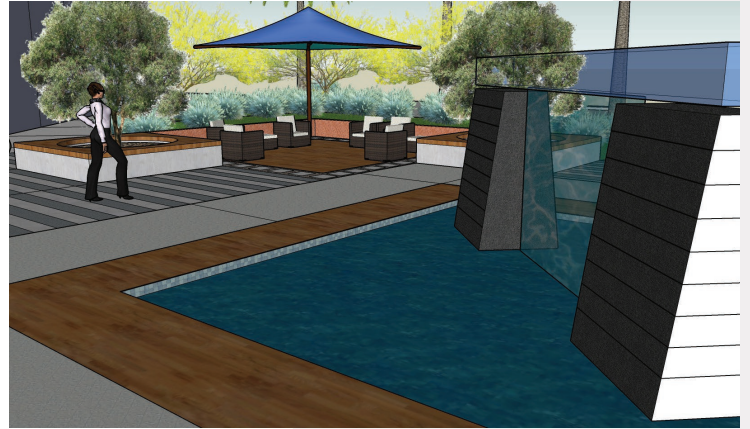
1920 Main St., #100
Irvine, CA 92614
949 854 6600
www.naicapital.com

No warranty, express or implied, is made as to the accuracy of the information contained herein. This information is submitted subject to errors, omissions, change of price, rental or other conditions, withdrawal without notice, and is subject to any special listing conditions imposed by our principals. Cooperating brokers, buyers, tenants and other parties who receive this document should not rely on it, but should use it as a starting point of analysis, and should independently confirm the accuracy of the information contained herein through a due diligence review of the books, records, files and documents that constitute reliable sources of the information described herein. Logos are for identification purposes only and may be trademarks of their respective companies. NAI Capital, Inc. Cal DRE Lic #01990696.

2677 N Main Street

Santa Ana, California 92706

COURTYARD IMPROVEMENTS (*Upcoming Q2*)



For more information:

Steven Hogberg
949.468.2382
shogberg@naicapital.com
Cal DRE Lic #00871821

Steve Ehrich
949.468.2328
sehrich@naicapital.com
Cal DRE Lic #01092019

1920 Main St., #100
Irvine, CA 92614
949 854 6600
www.naicapital.com

No warranty, express or implied, is made as to the accuracy of the information contained herein. This information is submitted subject to errors, omissions, change of price, rental or other conditions, withdrawal without notice, and is subject to any special listing conditions imposed by our principals. Cooperating brokers, buyers, tenants and other parties who receive this document should not rely on it, but should use it as a starting point of analysis, and should independently confirm the accuracy of the information contained herein through a due diligence review of the books, records, files and documents that constitute reliable sources of the information described herein. Logos are for identification purposes only and may be trademarks of their respective companies. NAI Capital, Inc. Cal DRE Lic #01990696.