

Title Center

Office Space for Lease



2211 & 2233 Lee Road,
Winter Park, FL 32789

Property Details:

Total Space Available	14,980 SF
Rental Rate	Negotiable
Min. Divisible	740 SF
Max. Contiguous	10,309 SF
Property Type	Office
Building Sizes, combined	40,384 SF
Class	B
Zoning Description	O-1

Spaces:

Suite	Space Available	Price	Lease Type	Date Available	Description
2211 - 210	1,369 SF	Negotiable	Full Service	Now	Attached floor plan shows how space can be divided
2233 - 203	1,188 SF	Negotiable	Full Service	Now	
2233 - 206	783 SF	Negotiable	Full Service	Now	
2233 - First Floor	10,309 SF	Negotiable	Full Service	2/1/19	
2233 - 202	1,331 SF	Negotiable	Full Service	2/1/19	

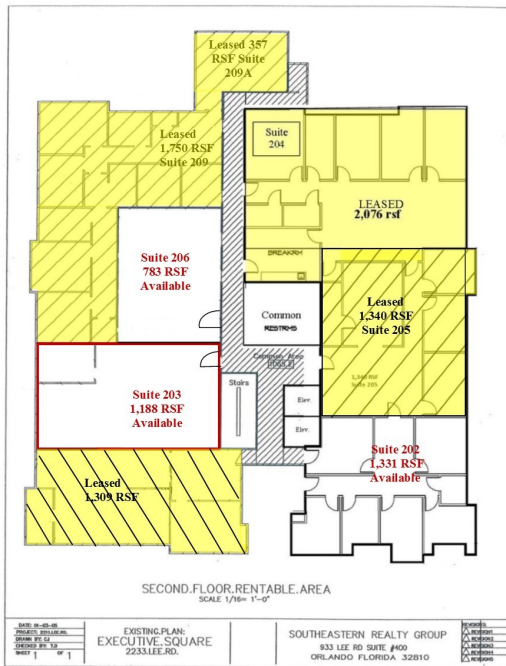
Location Description:

- Winter Park address/ Good Parking
- Two story, Full-Service Office building
- Recently Painted
- Convenient access to I-4 and US Hwy 17-92
- Minutes from Downtown Winter Park, Downtown Orlando, Maitland, and Altamonte Springs
- Close to new retail/ restaurants in Winter Park



Commercial Sales & Leasing | Property Management | Project Development | Acquisitions & Dispositions | Construction Services

Southeastern Realty Group, Inc. - 933 Lee Road Suite 400 - Orlando, FL 32810 - t: 407-629-5595 - f: 407-645-2035

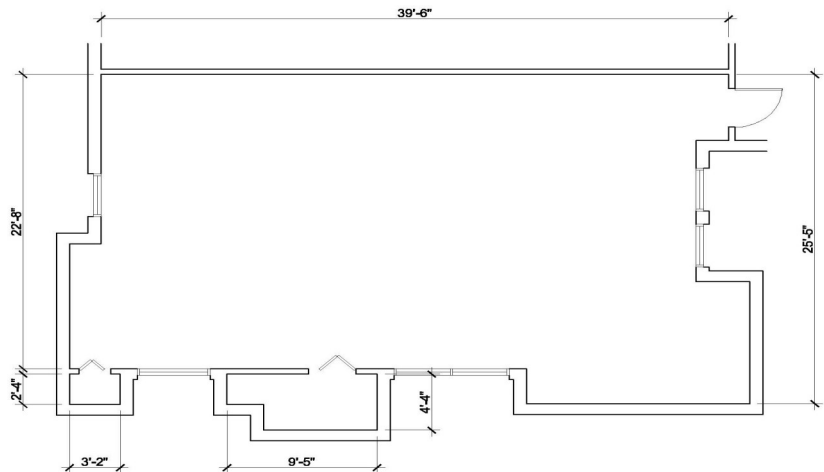


2233 Lee Road

Suite 203 - 1,188 RSF
Suite 206 - 783 RSF
(203 & 206 can be combined)
Suite 202 - 1,331 RSF

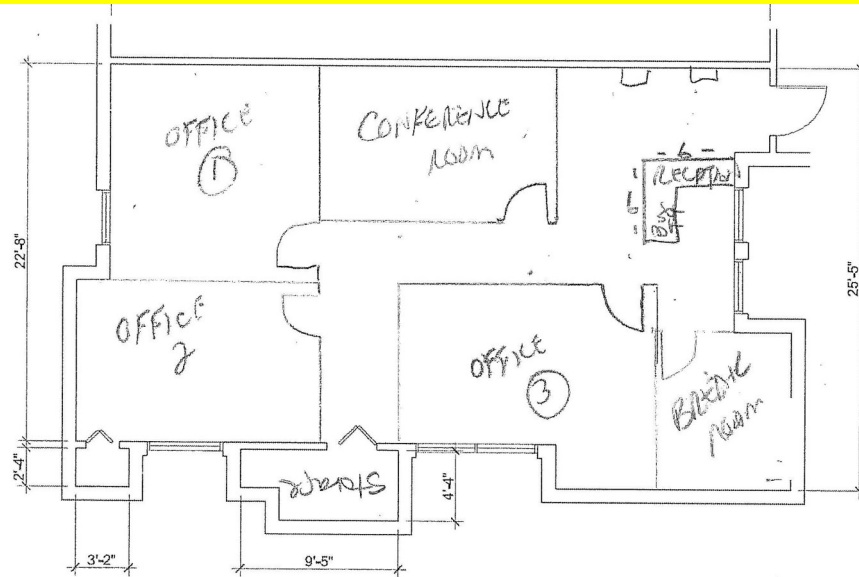
2211 Lee Rd

Suite 210 - 1,369 RSF

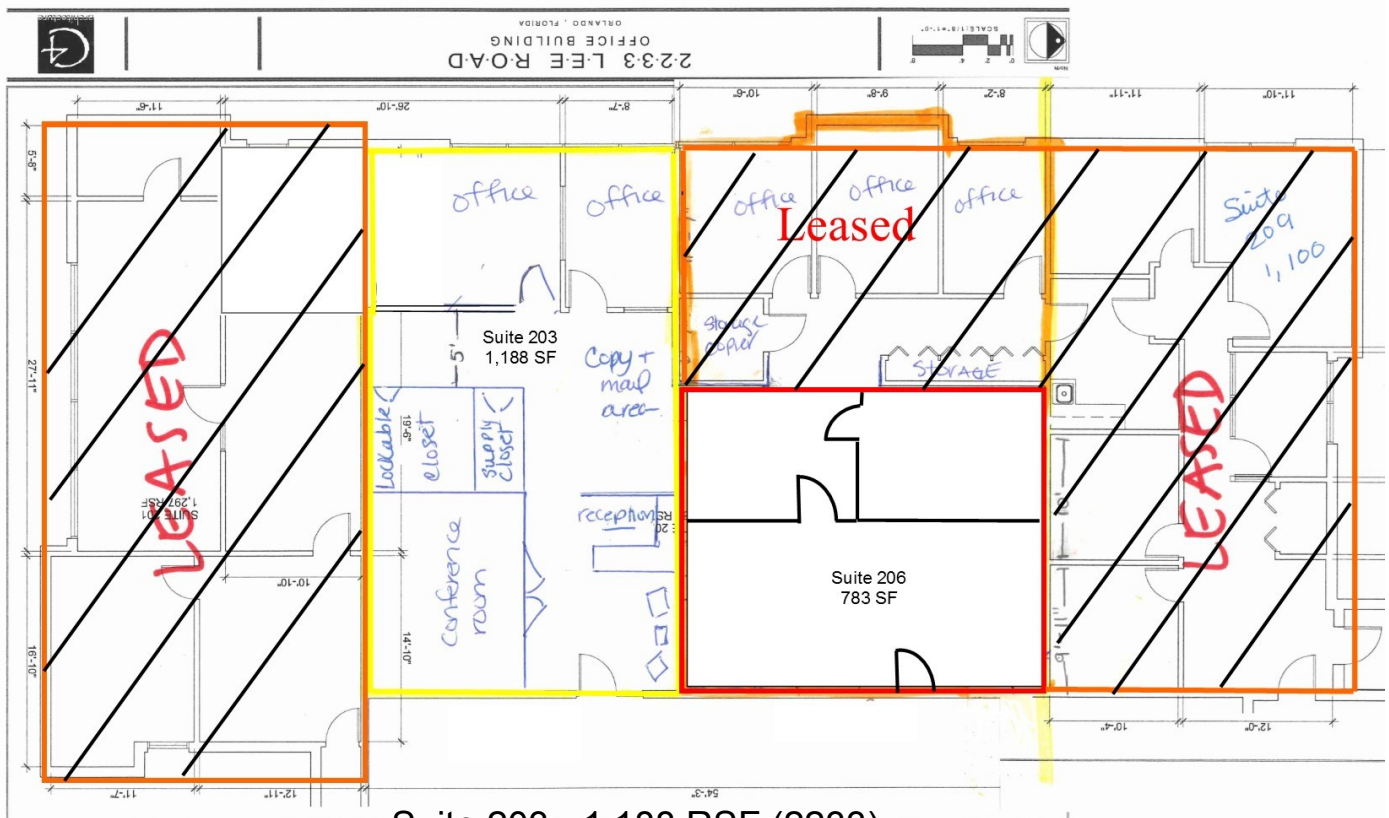


Southeastern Realty Group
933 Lee Road, Suite 400, Orlando, Florida 32810
407-629-5595 phone, 407-645-2035 fax
Visit our website at www.southeasternrealty.com

Suites 203, 206, & 210 below are sample floor plans.
Landlord can also build to suit

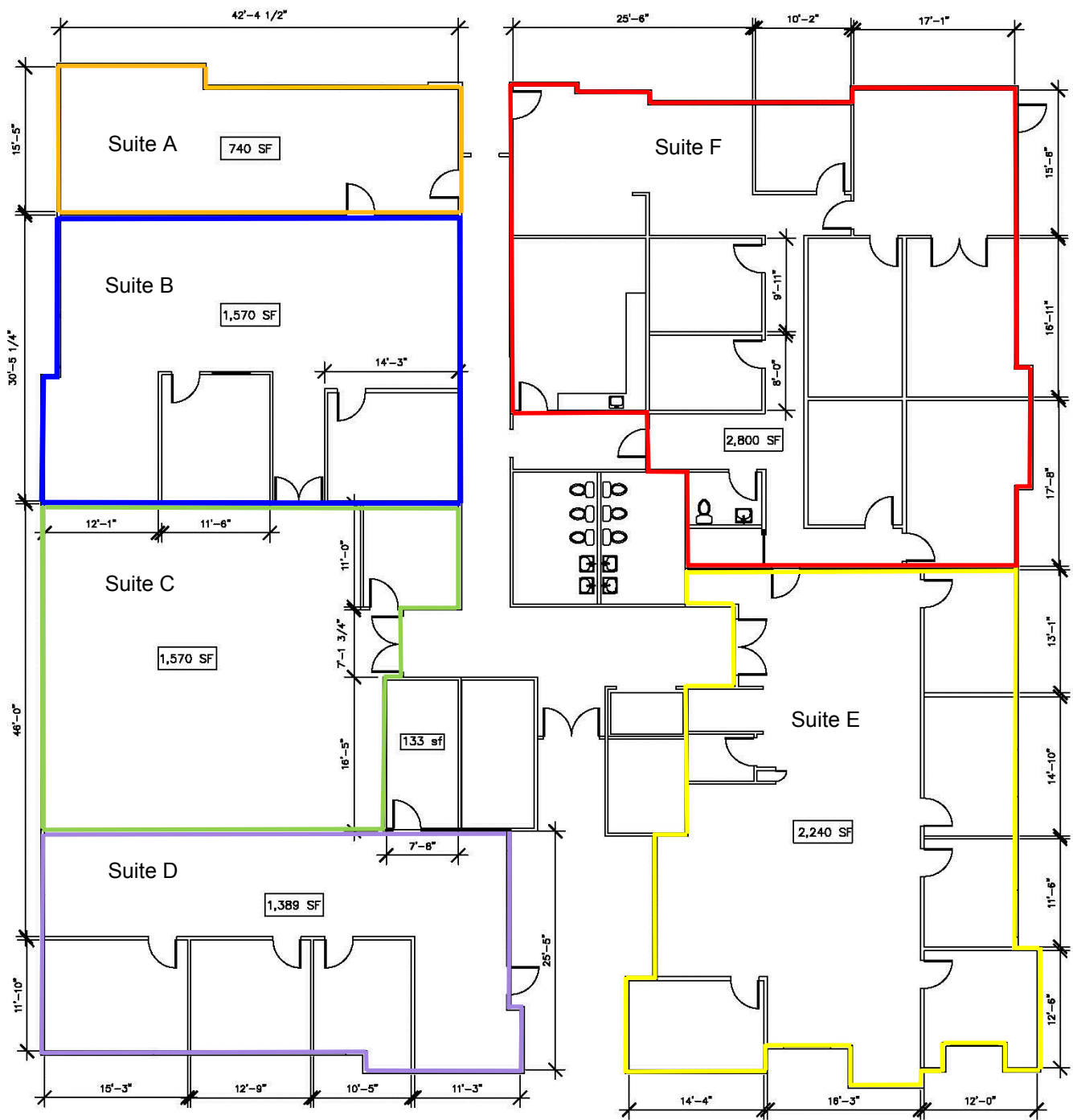


Suite 210 - 1,369 RSF (2211)



Suite 203 - 1,188 RSF (2233)

Suite 206 - 783 RSF (2233)



2233BUILDING
FIRST.FLOOR
10,309 RENTABLE SF



10,309 SF or can subdivide space:
Suite A - 740 RSF, Suite B - 1,570 RSF
Suite C - 1,570 RSF, Suite D - 1,389 RSF
Suite E - 2,240 RSF, Suite F - 2,800 RSF