



FOR LEASE

MEDICAL & OFFICE SUITE AVAILABLE



TUSTIN CORPORATE PLAZA

1401 N TUSTIN AVE
SANTA ANA, CALIFORNIA

PROPERTY FEATURES

- Medical and office suites available
- 3-story medical/office building
- Easy access and convenient parking
- Free surface parking (reserved parking available upon request)
- Professionally managed
- Ideally suited for therapists, law firms, doctors and accountants
- Centrally located near restaurants, banks and major freeways

EXCLUSIVELY LISTED BY

ALLEN BASSO
Senior Vice President
License ID# 01298152
949.790.3130
abasso@leeirvine.com

BRIAN GARBUTT
Senior Vice President
License ID# 01215482
949.790.3166
bgarbutt@leeirvine.com

ERIC DARNELL
Vice President
License ID# 01888743
949.790.3157
edarnell@leeirvine.com





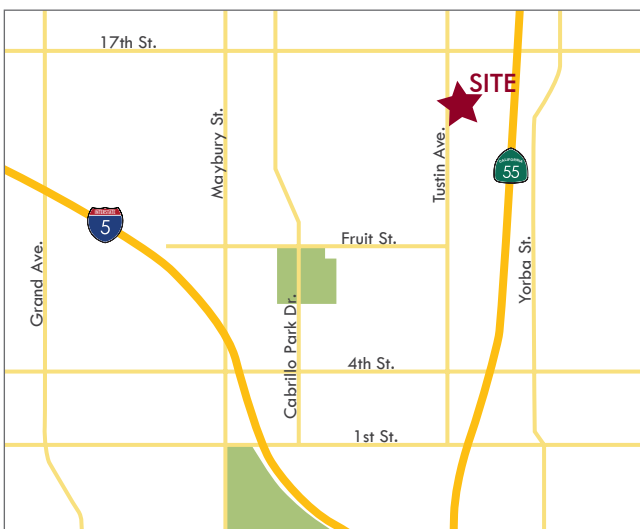
FOR LEASE

MEDICAL & OFFICE SUITE AVAILABLE



TUSTIN CORPORATE PLAZA

1401 N TUSTIN AVE
SANTA ANA, CALIFORNIA



EXCLUSIVELY LISTED BY

ALLEN BASSO
Senior Vice President
License ID# 01298152
949.790.3130
abasso@leeirvine.com

BRIAN GARBUTT
Senior Vice President
License ID# 01215482
949.790.3166
bgarbutt@leeirvine.com

ERIC DARNELL
Vice President
License ID# 01888743
949.790.3157
edarnell@leeirvine.com



TUSTIN CORPORATE PLAZA

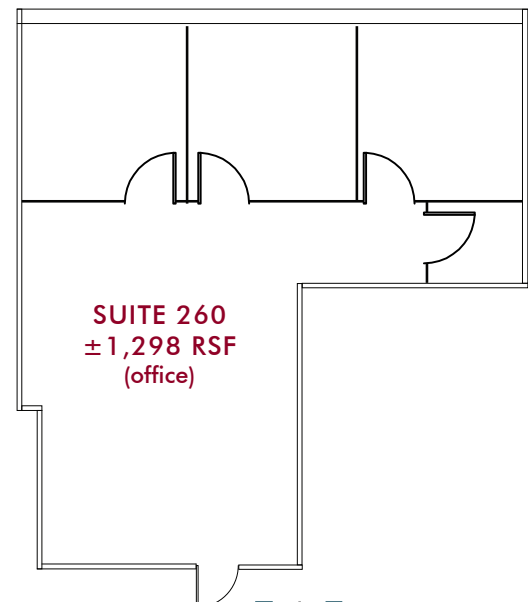
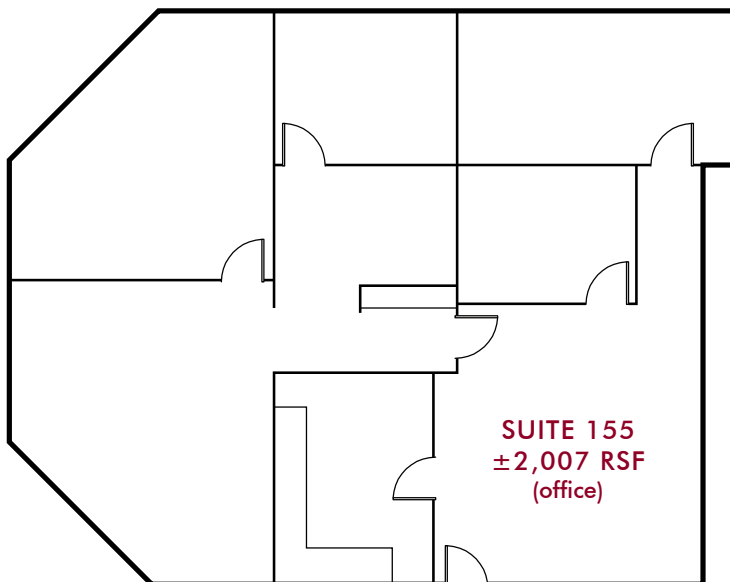
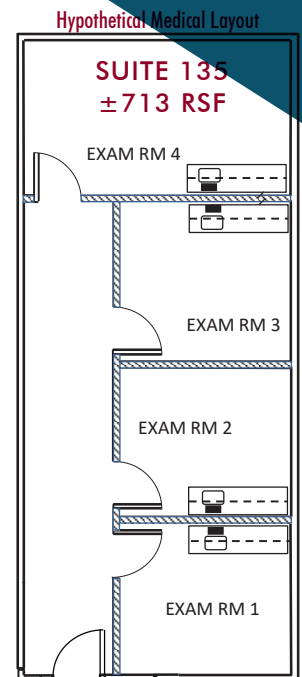
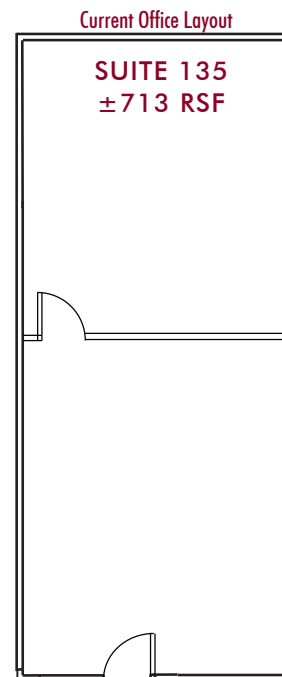
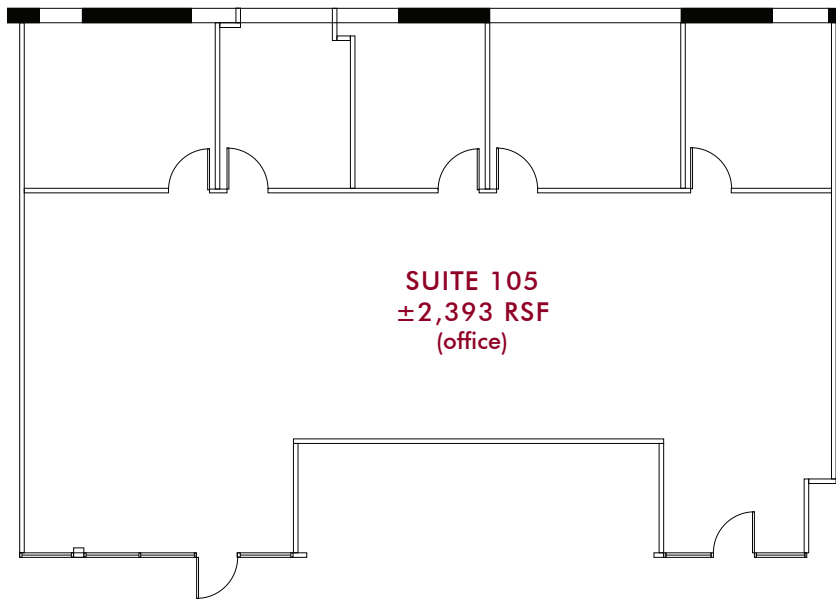
1401 N TUSTIN AVE
SANTA ANA, CALIFORNIA

AVAILABILITIES

SUITE	TYPE	SQ FT	LEASE RATE	DESCRIPTION
105	Office	2,393	\$2.00 FSG	5 offices, large open area and 2 entrances into suite
135	Office	713	\$2.00 FSG	1 office and small open area
155	Office	2,007	\$2.00 FSG	Large reception/waiting area, 5 offices, storage/data area and open area
160	Office	1,876	\$2.00 FSG	Reception, private window offices, open area, and conference room
260	Office	1,298	\$2.00 FSG	Call for details
330	Medical	1,561	\$2.30 FSG	Waiting area, reception, 2 offices, 1 exam room and open area
340	Medical	2,569	\$2.30 FSG	Fully built out dental space
350	Office	2,569	\$2.00 FSG	

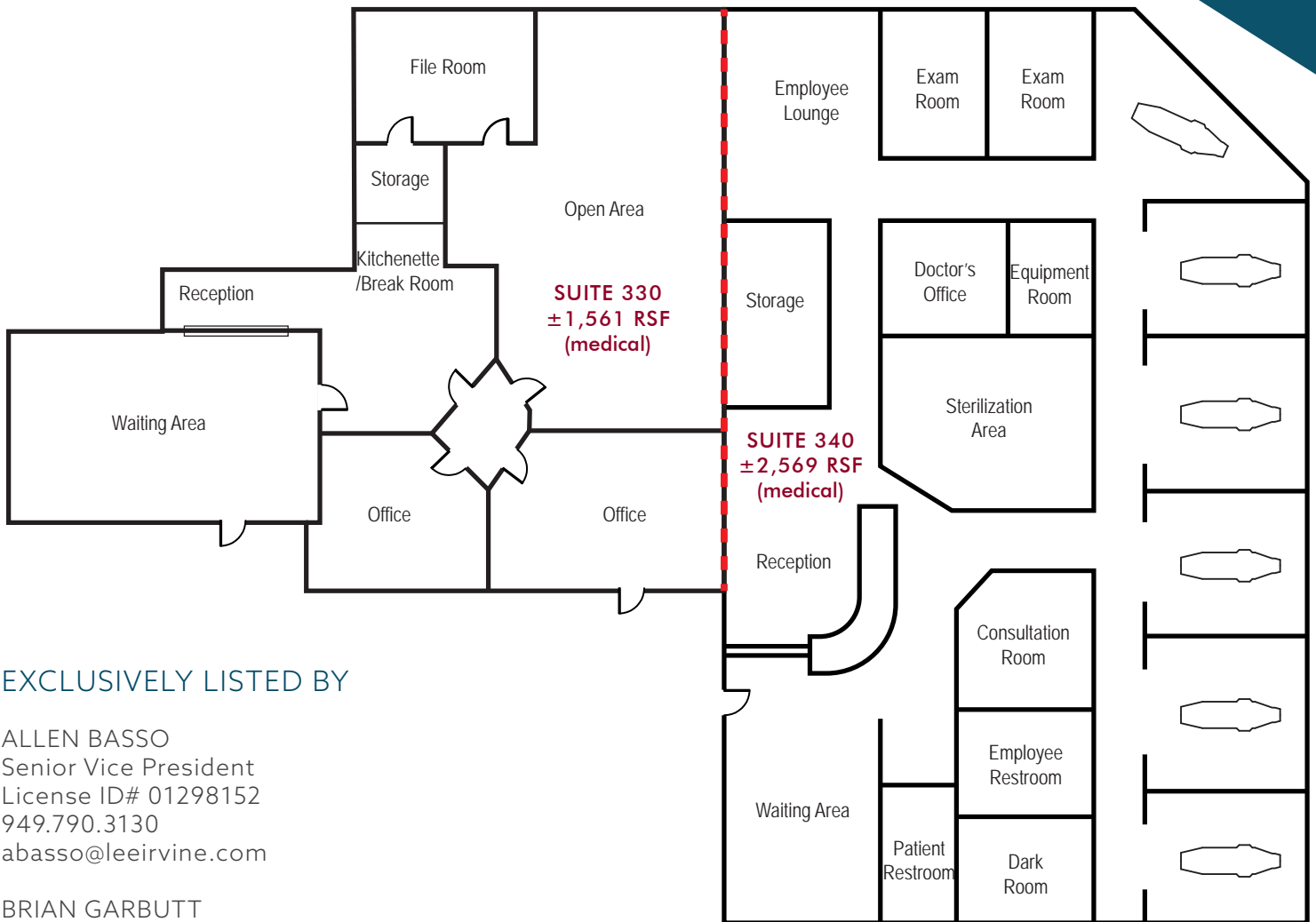
TUSTIN CORPORATE PLAZA

1401 N TUSTIN AVE
SANTA ANA, CALIFORNIA



TUSTIN CORPORATE PLAZA

1401 N TUSTIN AVE
SANTA ANA, CALIFORNIA



EXCLUSIVELY LISTED BY

ALLEN BASSO
Senior Vice President
License ID# 01298152
949.790.3130
abasso@leeirvine.com

BRIAN GARBUTT
Senior Vice President
License ID# 01215482
949.790.3166
bgarbutt@leeirvine.com

ERIC DARNELL
Vice President
License ID# 01888743
949.790.3157
edarnell@leeirvine.com

